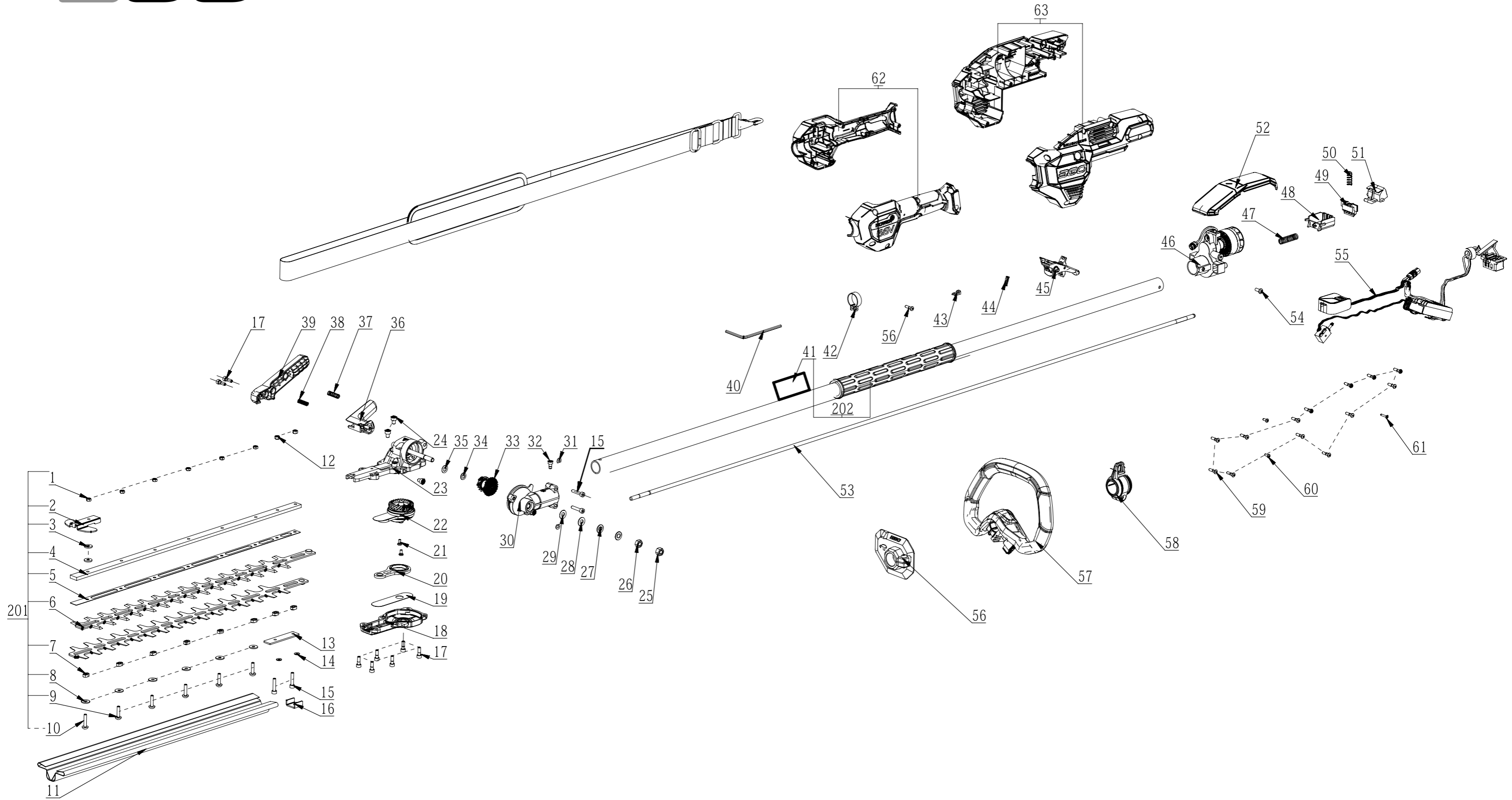




Product Description: Pole Hedge Trimmer
Model Number: HTX5300-PA
Service Item Number: F830036001S01
Version: A
Issue Date: 2023/11/13





BILL OF MATERIALS

HTX5300-PA Hedge Trimmer

Index Nr.	Art. Nr.	Beschreibung EN	Beschreibung DE	Tls	Supersession	QTY in machine	Torque (Nm)	MPQ	Repair time (h)
1	5630007010	Prevailing Torque Hexagon Nut				6			2
2	3705992001	Tip Protector	Anschlagschutz			1		1	3
3	5650047001	Plain Washer				2			3
4	3709011001	Clamp Support				1			5
5	3709018001	Hold Down Strip				1			5
6	3709060001	Blade				2			5
7	3580331001	Bush				8		10	5
8	5650487001	Plain Washer	Scheibe			6		10	5
9	5620605001	Hexagon Socket Screw	Innensechskantschraube			5		10	5
10	5611133001	Hexagon Socket Button Head Screw				1			5
11	3134546001	Sheath				1			1
12	5630565001	Prevailing Torque Type All-metal Hexagon				2			2
13	3709014001	Support Plate				1			5
14	5651101001	Wave Washer				2			5
15	5620216005	Hexagon Socket Screw	Inbusschraube			4		10	5
16	3709251001	Support Plate				1			2
17	5620019005	Hexagon Socket Screw	Inbusschraube			8		10	1
18	2850667001	Lower Gear Case Cover Assembly				1			2
19	3700736001	Support Plate	Halteplatte			1		1	2
20	2850509001	Link Assembly				1			3
21	5620156007	Hexagon Socket Screw	Inbusschraube			2		10	5
22	2850168001	Bevel Gear Assembly				1			5
23	2850666001	Right Gear Case Assembly				1			8
24	5620546001	Hexagon Socket Screw	Inbusschraube			3		10	1
25	5630532001	Prevailing Torque Type All-metal Hexagon N				1			1
26	5630016001	Hexagon Nut				1			2
27	3660652001	Disc Spring	Tellerfeder			2		10	2
28	5650569001	Plain Washer	Scheibe			1		10	2
29	5650578001	Plain Washer	Scheibe			1		10	2
30	2790854001	Left Gear Case Assembly				1			5
31	5650598001	Washer	Scheibe			2		10	2
32	5620213003	Hexagon Socket Screw	Inbusschraube			1		10	1
33	2850001001	Transmitting Gear Assembly				1			3
34	5650570001	Plain Washer	Scheibe			1		10	3
35	5650187001	Washer	Scheibe			1		10	3
36	3402841002	Release Button				1			1
37	3660072002	Spring	Feder			1		10	2
38	3660094001	Spring	Feder			1		10	2
39	3402842001	Bevel Lever	Hebel Winkelverstellung			1		1	1
40	5680164001	Inner Hexagon Spanner	Inbusschlüssel			1		1	1
41	2245897003	Nameplate				1			1
42	3705178001	Fixed Ring	Befestigungsring			1		10	5
43	3133938001	Rubber Block				1			3
44	3660088003	Knob-reset Spring	Rückstellfeder			1		10	5
45	2829162001	Trigger Assembly				1			3
46	2790798001	Motor And Gear Case Assembly				1			3
47	3660818001	Compression Spring	Druckfeder			1		10	3
48	3131427001	Sliding Block	Sliding Block			1		1	3
49	3127497001	Power Pack Button	Akku-Entriegelungshebel			1		1	3
50	3660013003	Spring1	Feder			1		10	3
51	3127498001	Power Pack Button	Akku-Entriegelungshebel			1		1	3
52	3133887001	Cover Plate				1			3
53	3570452001	Drive Shaft				1			2
54	5620050007	Screw	Schraube M5x12			1		10	3
55	2831654001	Electric Assembly				1			8
56	2850199001	Baffle Assembly				1			2
57	2829754001	Auxiliary Handle Assembly				1			2
58	2850167001	Pothook Assembly				1			5
59	5620479001	Screw	Schraube			14		10	1
60	5610295001	Hexagon Socket Screw				2		1	1
61	5610241002	Screw				1			1
62	3900691005	L R Housing Set				1			3
63	3900651006	L R Handle Set				1			5
201	2850002001	Blade Set				1			5
202	2850315001	Connecting Tube Assembly				1			5