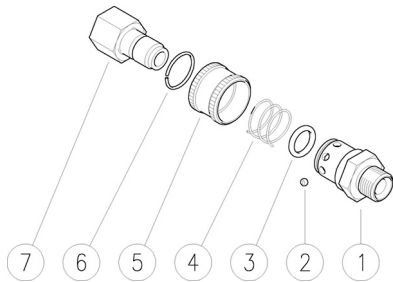


**26.2010.00 ARS250 B att.rapido a sfera G3/8M**  
**26.2010.10 ARS250 B att.rapido a sfera G3/8F**  
**26.2010.20 ARS250 B att.rapido a sfera G1/4F**  
**26.2010.30 ARS250 B att.rapido a sfera G1/2F**



**26.2015.61 ARS250 A nipplo a sfera G3/8 F**  
**26.2016.61 ARS250 A nipplo a sfera G1/4 F**  
**26.2023.61 ARS250 A nipplo a sfera G3/8 M**  
**26.2024.61 ARS250 A nipplo a sfera G1/2 M**

Pos.	Codice	Descrizione	Q.tà	K1	K2	K3	K4	
1	26.2011.31	Corpo ARS250 G3/8M (1)	1					5
1	26.2021.31	Corpo ARS250 G3/8F (2)	1					5
1	26.2022.31	Corpo ARS250 G1/4F (3)	1					5
1	26.2025.31	Corpo ARS250 G1/2F (4)	1					5
2	14.7405.00	Sfera 5/32" inox	8	•				10
3	10.3177.00	An.OR 2,62x12,37 mm	1	•				10
4	26.2012.51	Molla 1,3x22x13mm inox	1	•				10
5	26.2013.31	Ghiera ARS250	1	•				5
6	26.2014.51	An. elast. 1,2x19 mm inox	1					10
7	26.2015.61	ARS250 A nipplo a sfera G3/8 F	1					25
7	26.2016.61	ARS250 A nipplo a sfera G1/4 F	1					25
7	26.2023.61	ARS250 A nipplo a sfera G3/8 M	1					25
7	26.2024.61	ARS250 A nipplo a sfera G1/2 M	1					25

Kit	Codice	Descrizione	
K1	26.2017.24	Kit ric. ARS250 4x10pz.	1

(1) 26.2010.00 (2) 26.2010.10 (3) 26.2010.20 (4) 26.2010.30