

REPAIR GUIDELINE

Backpack Battery_BAX1500



Version: 1

Issue Date: 2018/03/16

NO.	Contents	Page
1	Maintenance equipment	4
2	Replace external parts (Without removing housing cover)	5-13
3	Replace the PCBA	14-18
4	Replace the housing cover	19-27
5	Assembly flow chart	28-42

DANGER!: You must follow the steps described in this manual very strictly. Any deviations from the described actions may cause a fire or an explosion. It may lead to serious injury or even death.

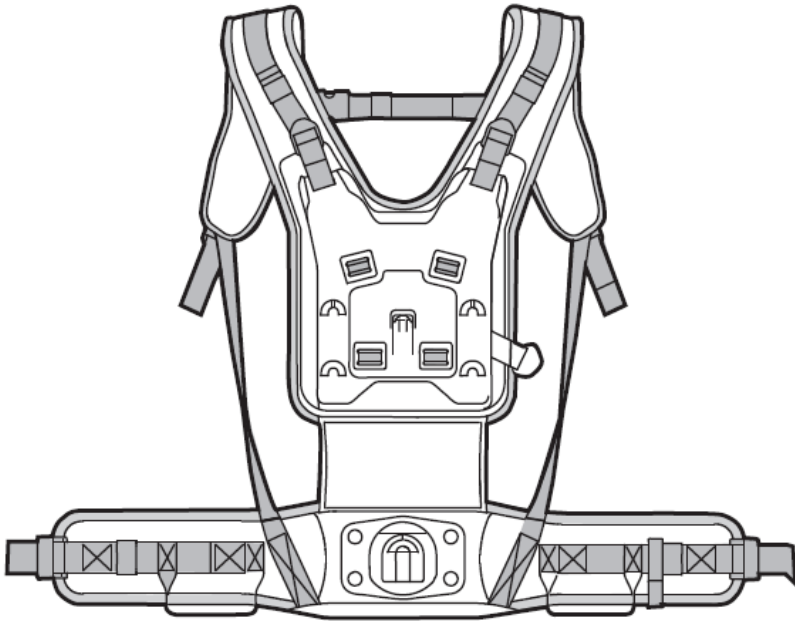
Notice: Make sure you have got all the recommended equipment before proceeding with the repair.



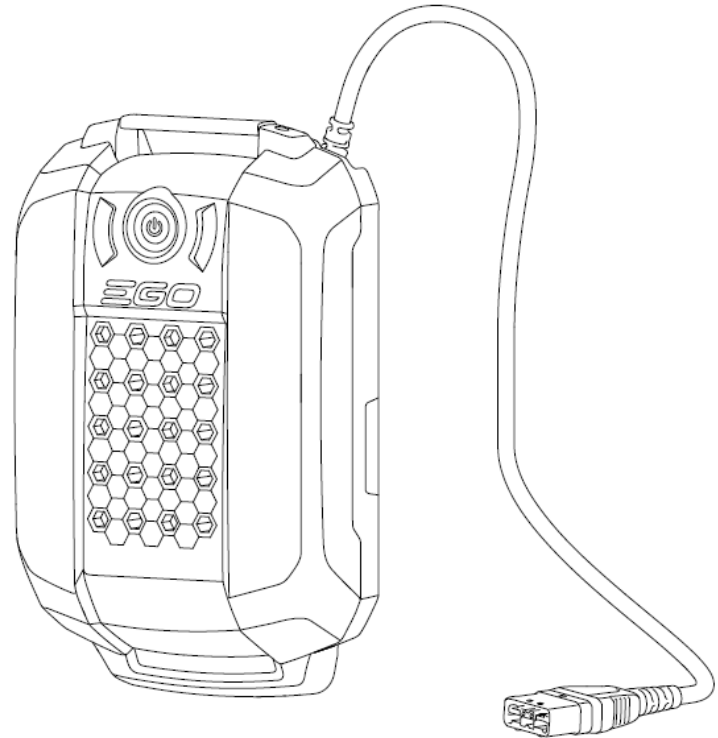
19_1024_G1
Backpack battery m

Replace The External Parts (Without Removing Housing Cover)

1. Remove the backpack harness from battery pack referring to user manual.



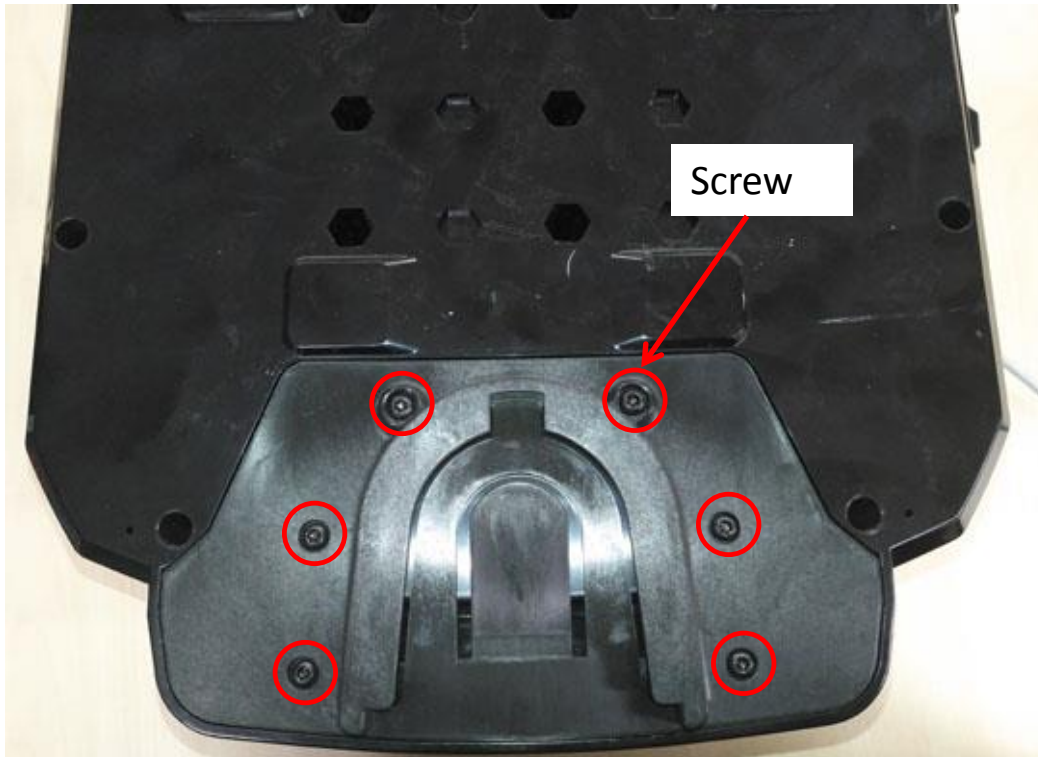
Backpack harness



Battery pack

Replace The External Parts (Without Removing Housing Cover)

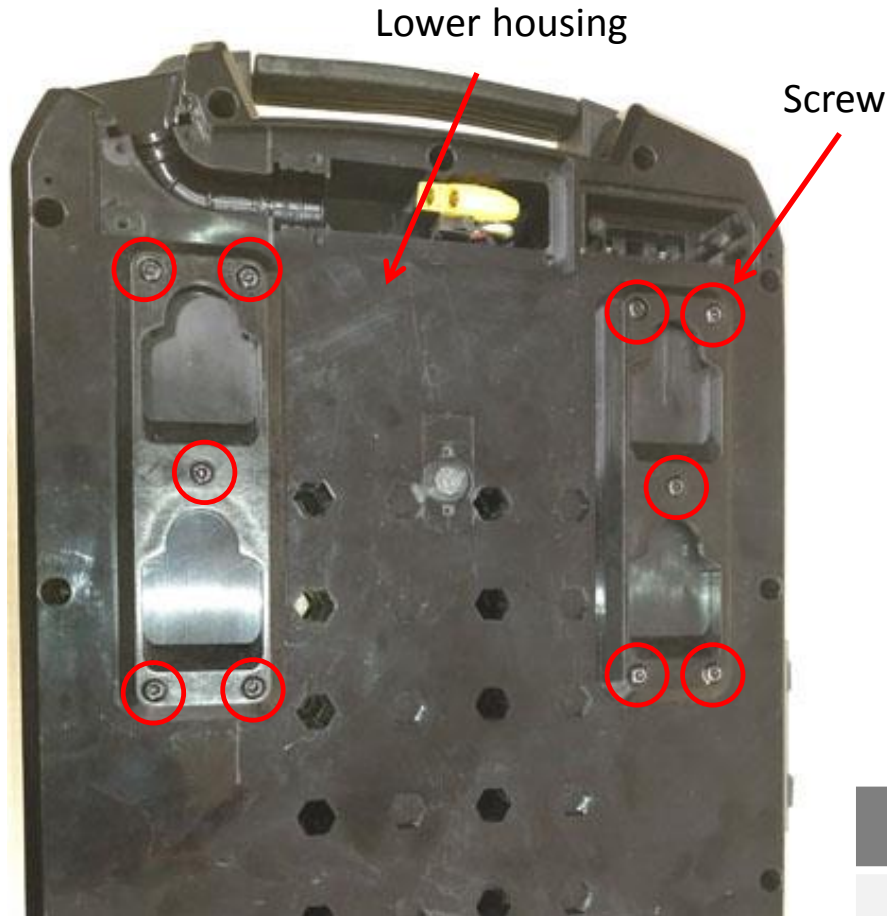
- Loosen the six screws and remove the belt mounting plate from the lower housing. If the belt mounting plate is damaged, replace with a new one.



Description	Part Number	Qty
Screw	5610329001	6
Belt Mounting Plate	3128807001	1

Replace The External Parts (Without Removing Housing Cover)

- Loosen the ten screws and remove the harness mounting plate from the lower housing. If the harness mounting plate is damaged, replace with a new one.



Description	Part Number	Qty
Screw	5610329001	10
Harness Mounting Plate	3128805001	2

Replace The External Parts (Without Removing Housing Cover)

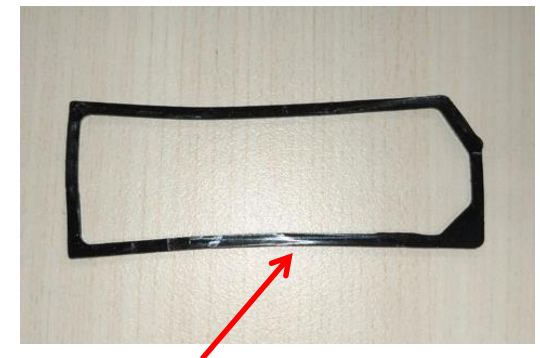
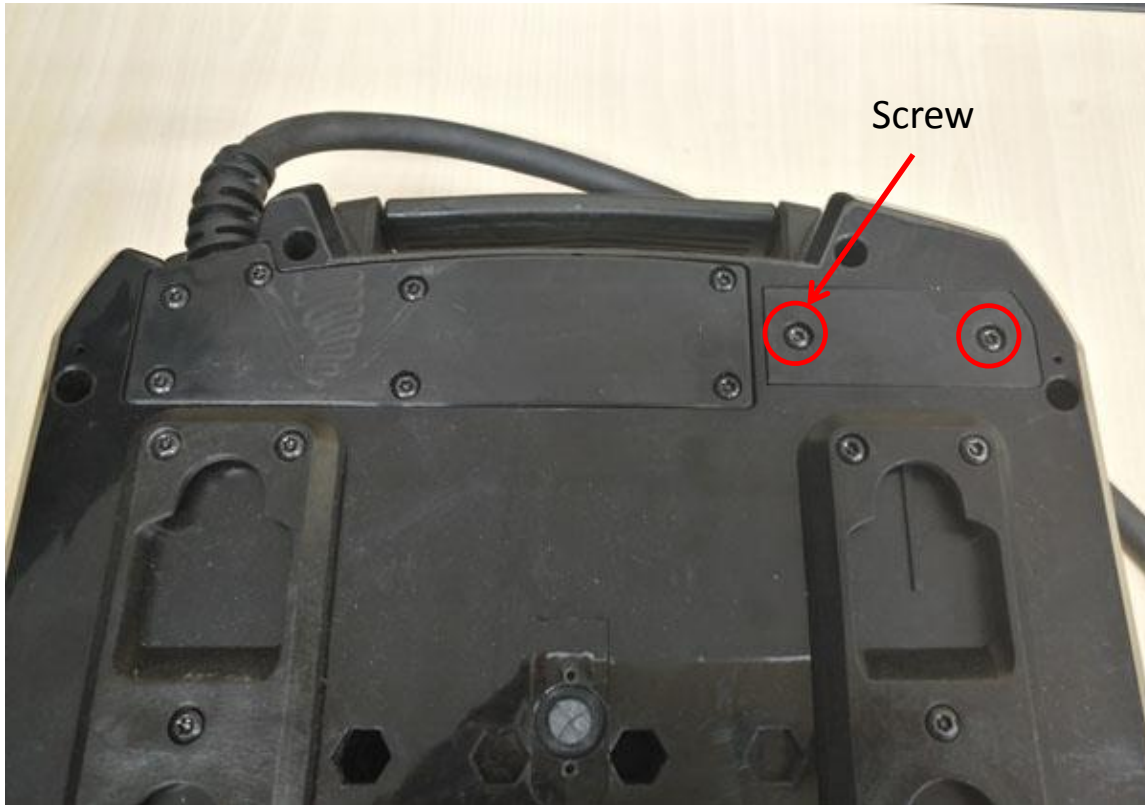
- Loosen the two screws #2 and remove the leaf spring from the lower housing. If the leaf spring is damaged, replace with a new one.



Description	Part Number	Qty
Screw #2	5610250001	2
Leaf Spring	3706275001	1

Replace The External Parts (Without Removing Housing Cover)

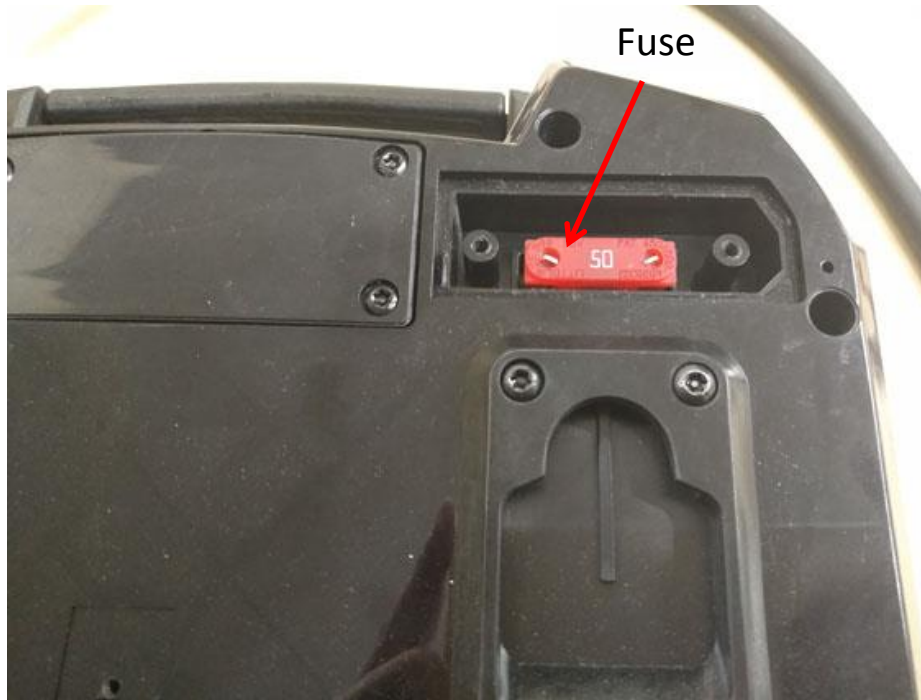
5. Loosen the two screws and remove fuse cover and seal ring #1 from the battery pack. If they are damaged, replace with a new one.



Description	Part Number	Qty
Screw	5610329001	2
Fuse Cover	3128803001	1
Seal Ring #1	3706281001	1

Replace The External Parts (Without Removing Housing Cover)

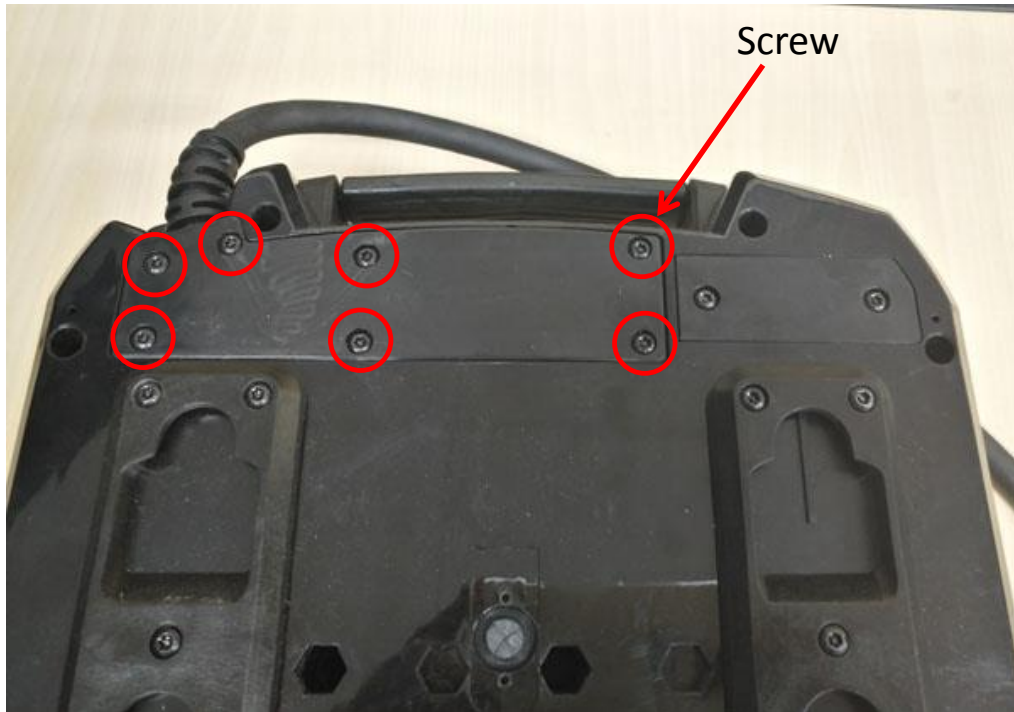
6. Take out the fuse from the mounting groove directly. Measure the fuse referring to “G1 Measurement”, and if the fuse is damaged, replace with a new one.



Description	Part Number	Qty
Fuse	4970316001	1

Replace The External Parts (Without Removing Housing Cover)

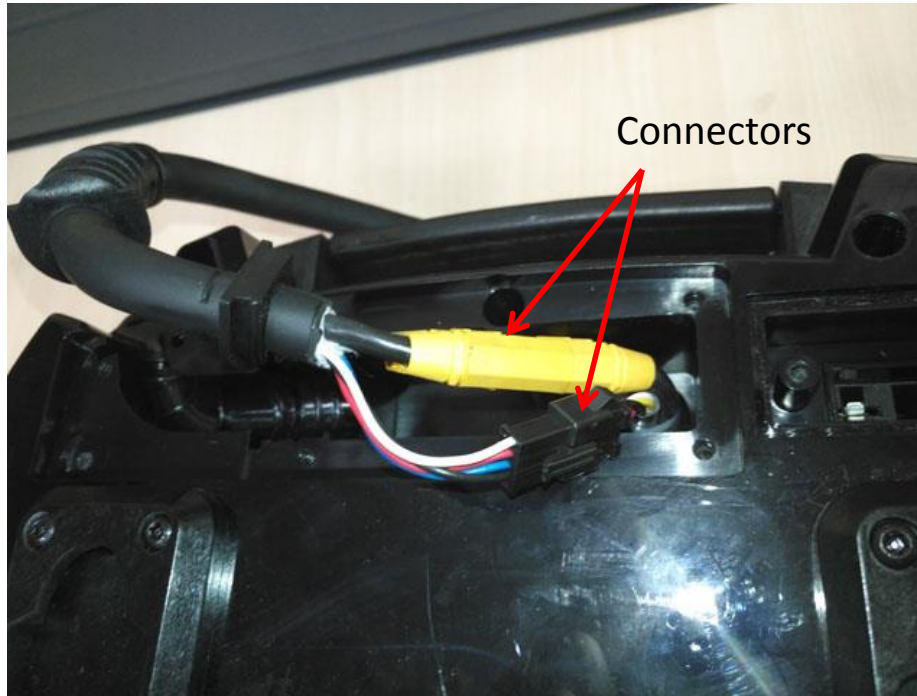
7. Loosen the seven screws and remove service cover and seal ring #2 from the battery. If they are damaged, replace with a new one.




Description	Part Number	Qty
Screw	5610329001	7
Service Cover	3128812001	1
Seal Ring #2	3706280001	1

Replace The External Parts (Without Removing Housing Cover)

8. Disconnect the two connectors and remove the cable. Measure the cable referring to "G1 Measurement", and if the cable is damaged, replace with a new one.



Notice: The green seal ring #3 in the cable can be replaced independently.

Description	Part Number	Qty
Cable	2825720 	1
Seal ring #3	5690356002	1

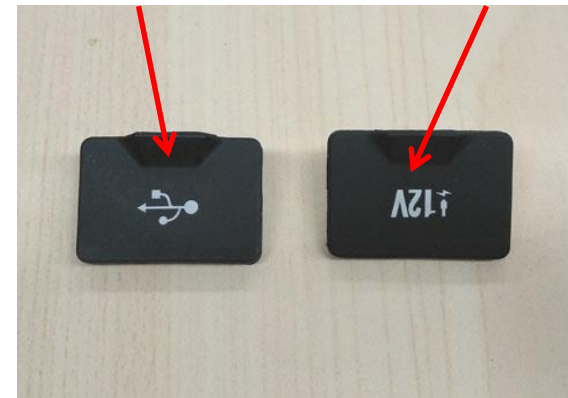
Replace The External Parts (Without Removing Housing Cover)

9. The two rubber covers can be replaced with new ones if necessary.



Left rubber cover

Right rubber cover



Description	Part Number	Qty
Right Rubber Cover	3128880001	1
Left Rubber Cover	3128881001	1
Protective Film	3706274001	1

Replace The PCBA

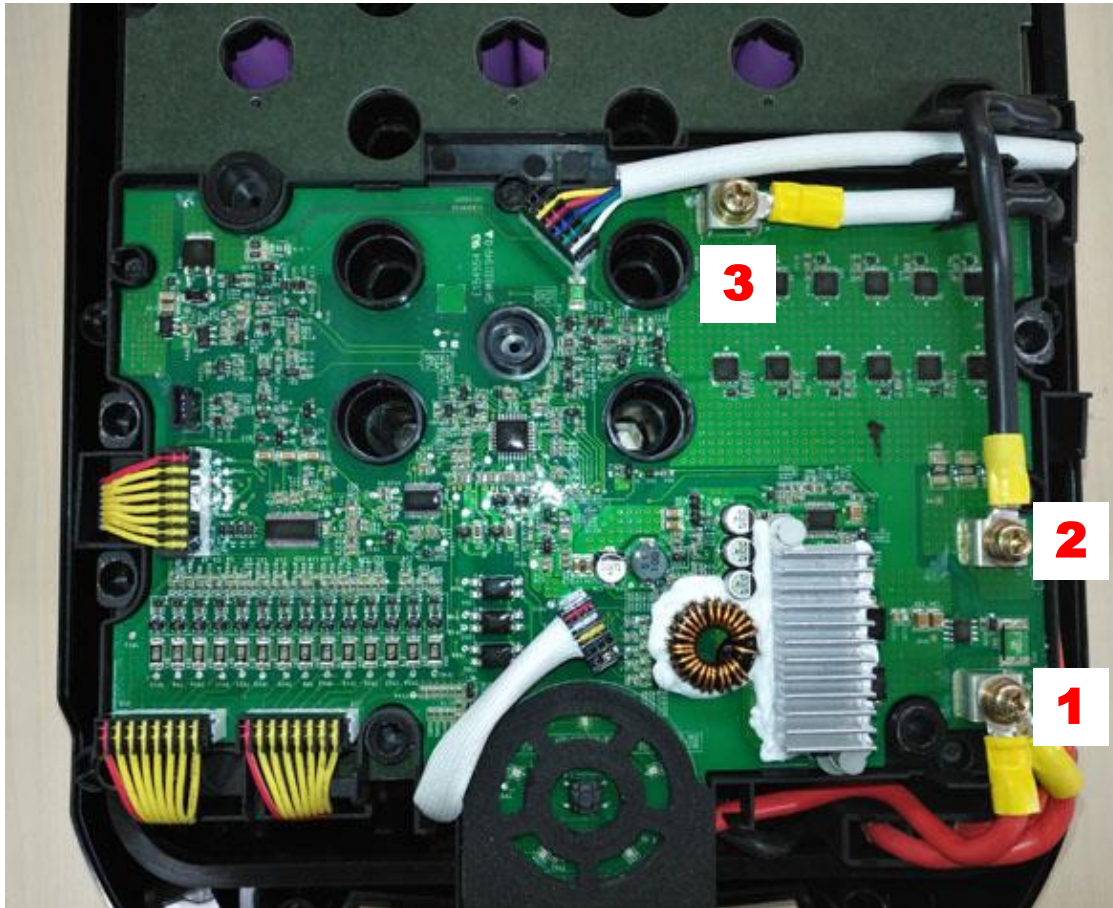
1. Referring to “Replace The Housing Cover”, remove upper cover from the battery pack.

Notice: Before you remove the upper cover, wear your antistatic gloves or antistatic wrist strap or other antistatic device.



Replace The PCBA

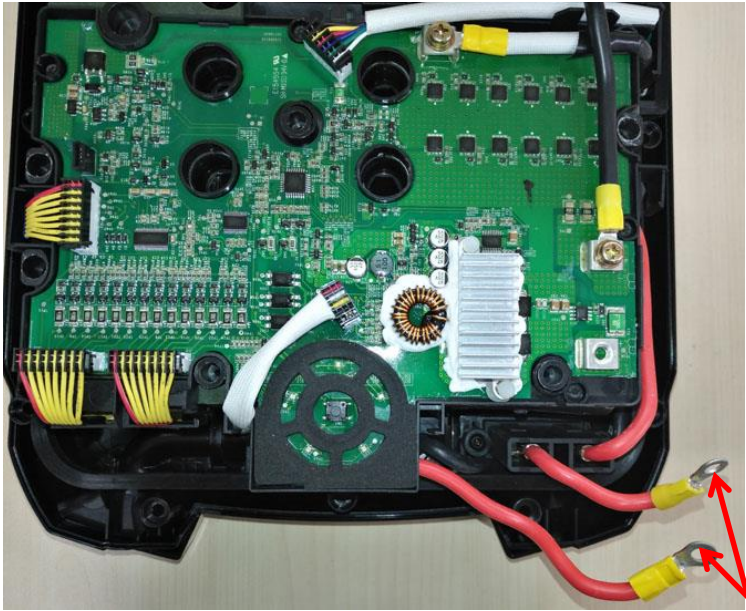
2. Remove the three screws with washer **in sequence** and **insulate the joint with insulating tape to prevent accidental electrical risks (See next slide).**



Description	Part Number	Qty
Screw with Washer	5620618001	3

Replace The PCBA

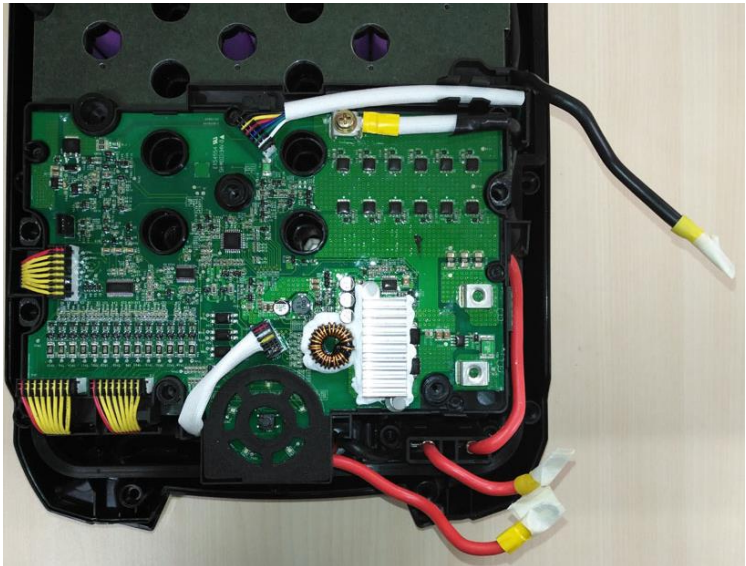
BAX1500 Backpack Battery



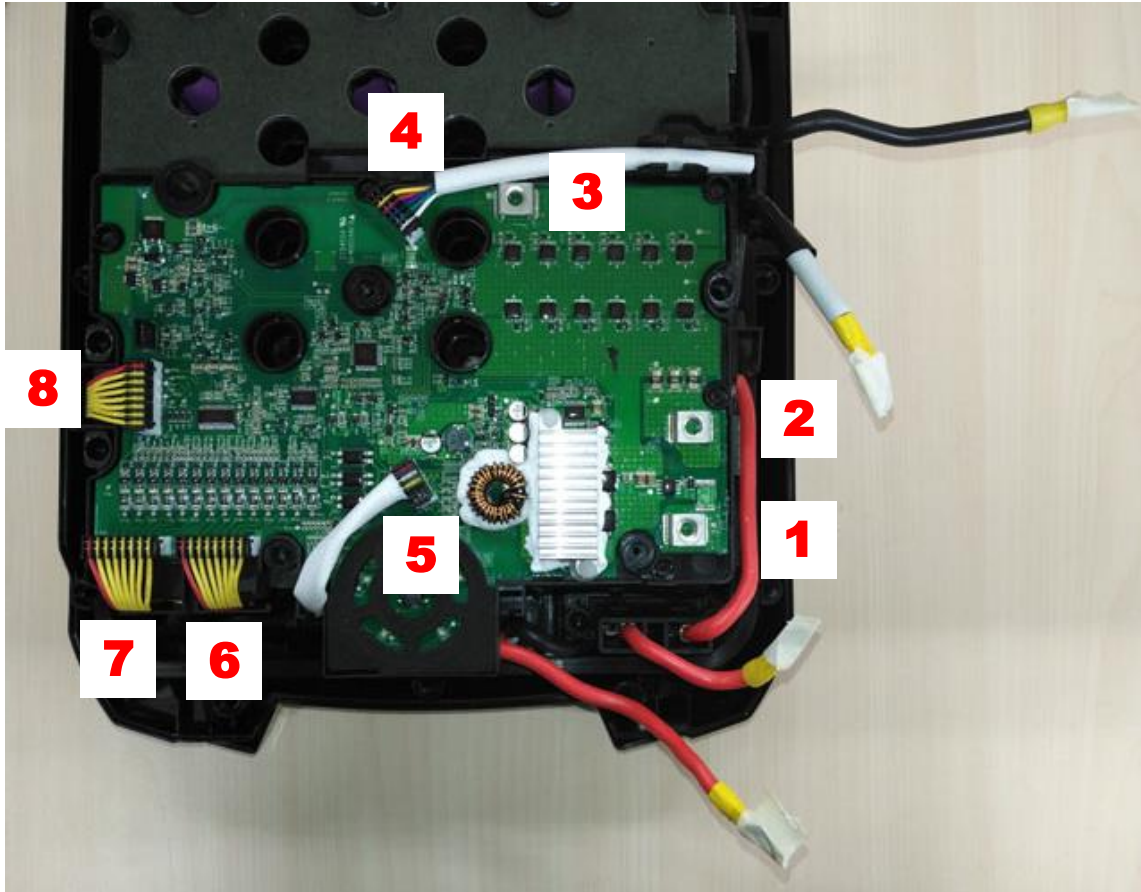
Joint



Insulating tape

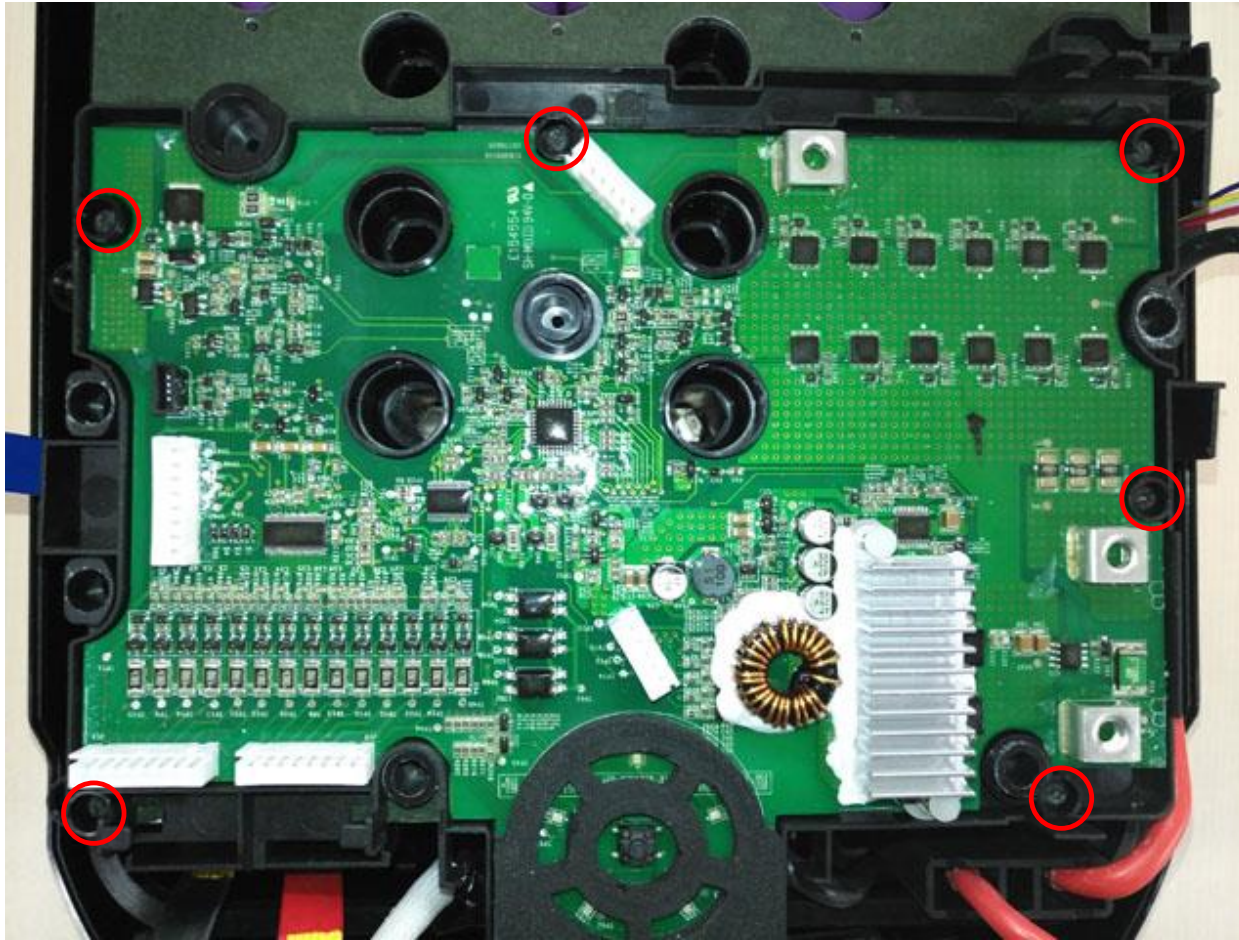


3. Disconnect the 5 connectors **in sequence (4-8)**.

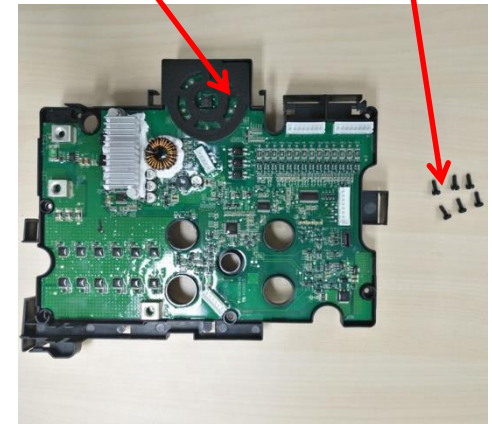


Replace The PCBA

4. Remove the six screws to separate the PCBA from the battery pack. If it is damaged, replace with a new one.



PCBA Screw



Description	Part Number	Qty
Screw	5610283001	6
PCBA	2830248001	1

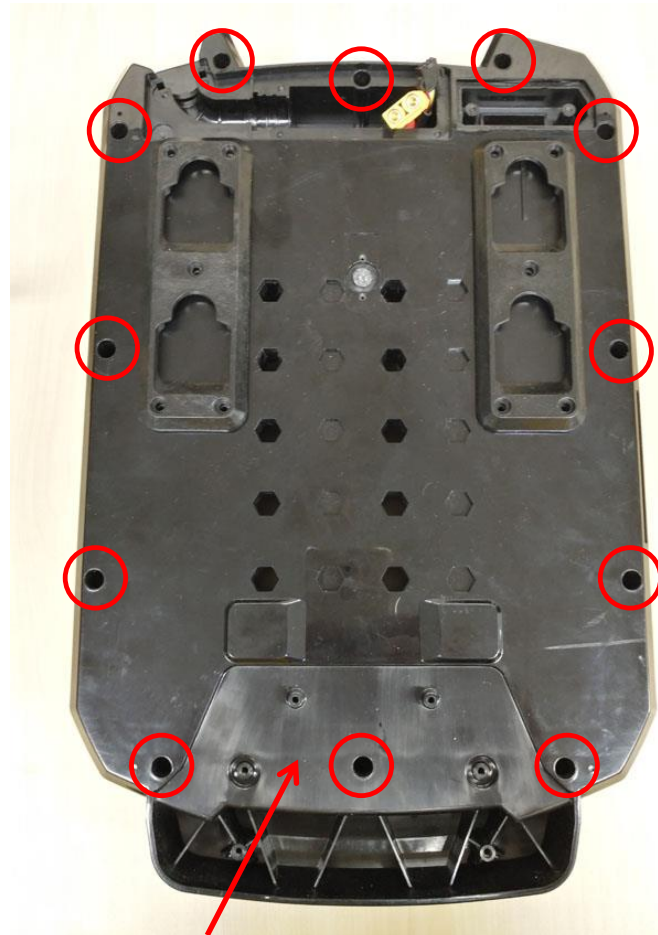
Replace The Housing cover

1. Referring to “Replace the external parts”, remove the cable, leaf spring, fuse and belt mounting plate from the battery pack.



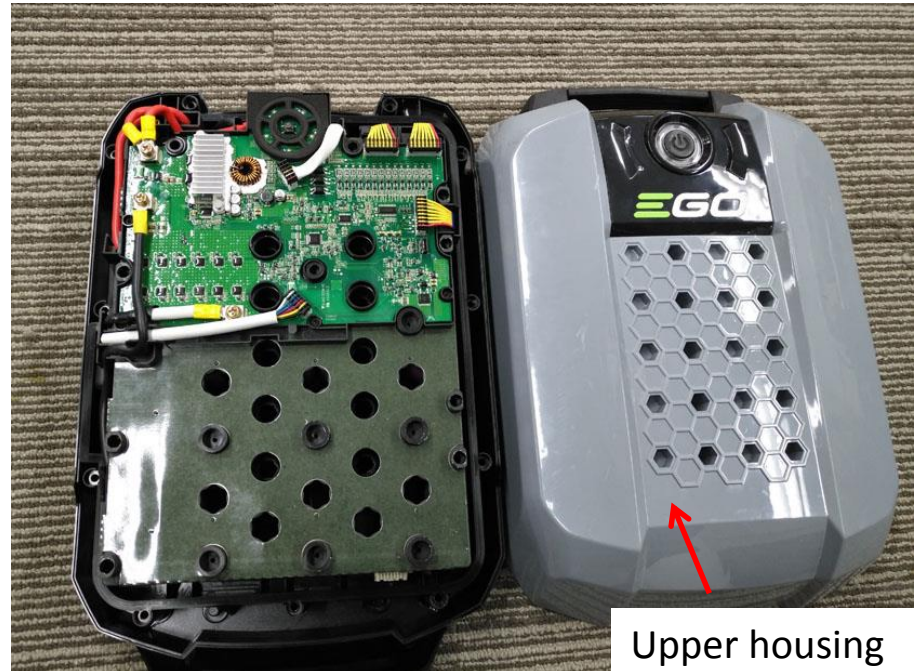
Replace The Housing cover

2. Remove the 12 screws from the lower housing and separate the upper housing from the battery pack.



Lower housing

WARNING: Take out all the screws from its mounting groove and take away from the cell assembly.



Upper housing

Description	Part Number	Qty
Screw	5610277002	12
Upper Housing	2825460001	1

Replace The Housing cover

3. Loosen the two screws and replace the handle assembly if any part is damaged.



Left guide bush

Right guide bush



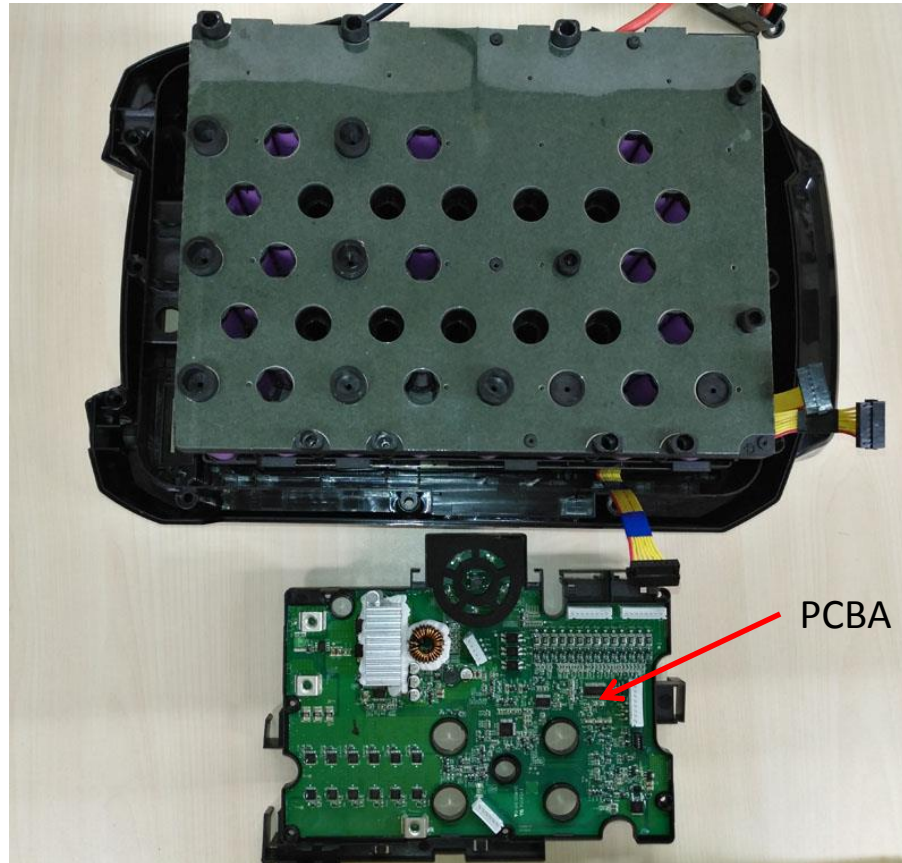
Handle assembly

Description	Part Number	Qty
Screw	5620617001	2
Left Guide Bush	2825131001	1
Right Guide Bush	2825132001	1
Handle Assembly	2825720001	1

Replace The Housing cover

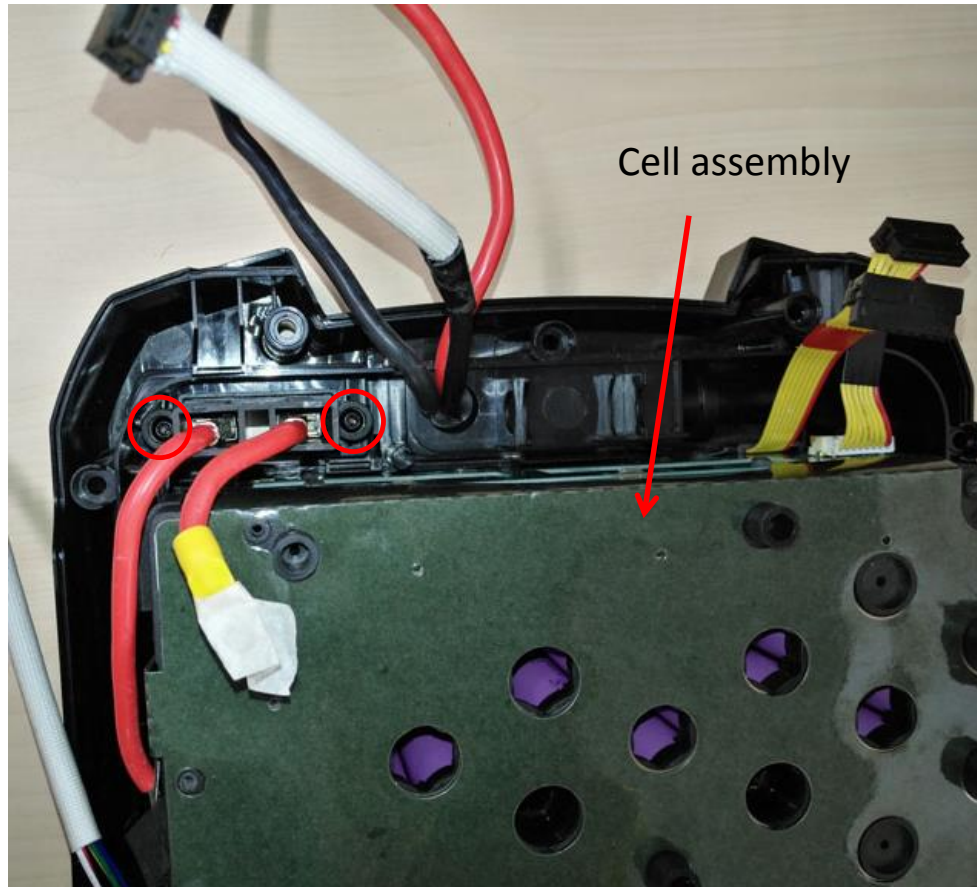
BAX1500 Backpack Battery

4. Referring to “Replace the PCBA”, remove the PCBA from the cell assembly.



Replace The Housing cover

5. Remove the two screws to disconnect the cell assembly from lower housing.

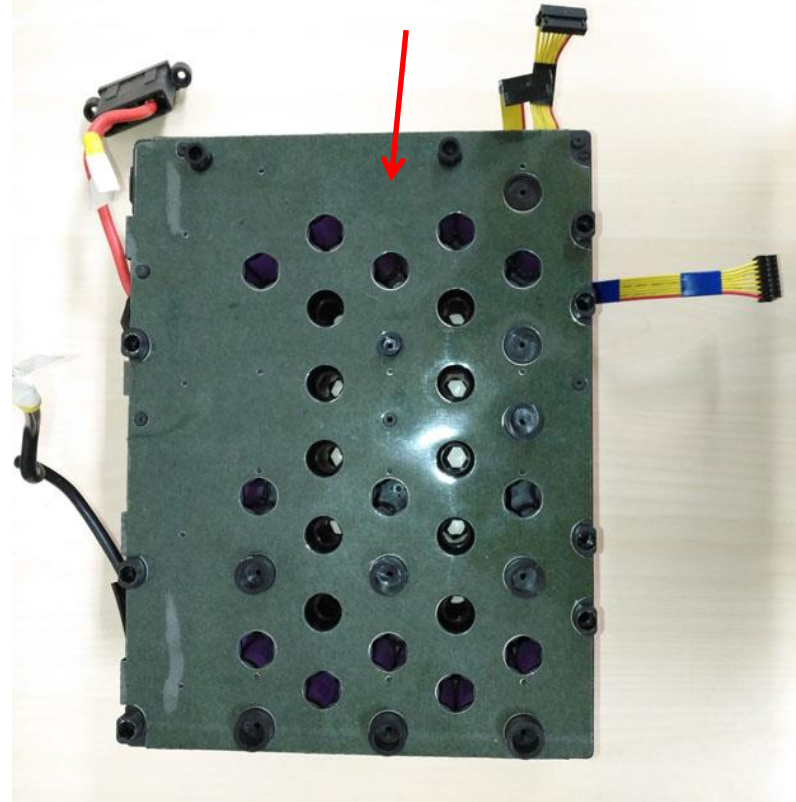


Description	Part Number	Qty
Screw	5610329001	2

Replace The Housing cover

6. Take out the cell assembly from the lower housing and put the cell assembly on a clean flat surface. If the cell assembly is broken, it is recommended to buy a new battery pack.

Cell assembly

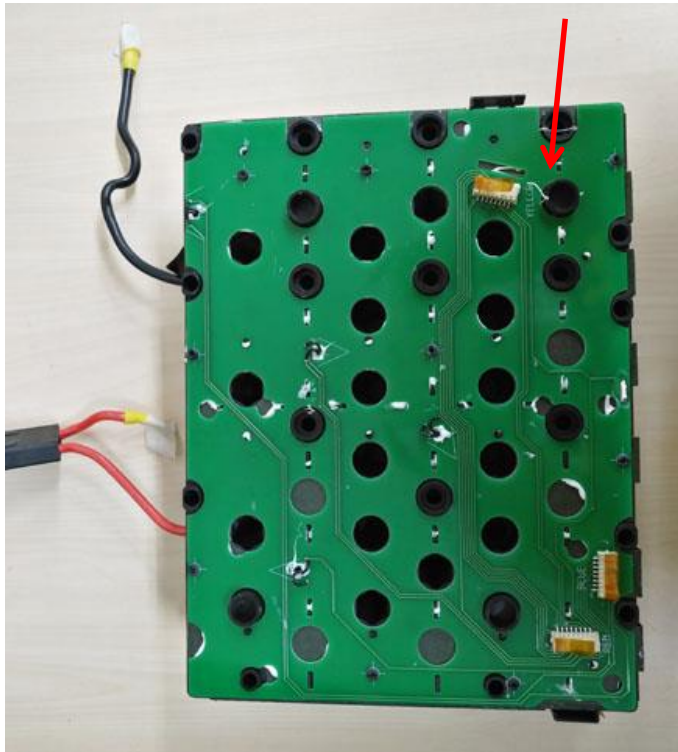


WARNING: Any extra actions on cell assembly is very dangerous. Never expose the cell assembly to water, sun, fire, other conductors, etc.

Replace The Housing cover

7. If any wire harness is broken, remove it from the cell assembly and replace with a new one.

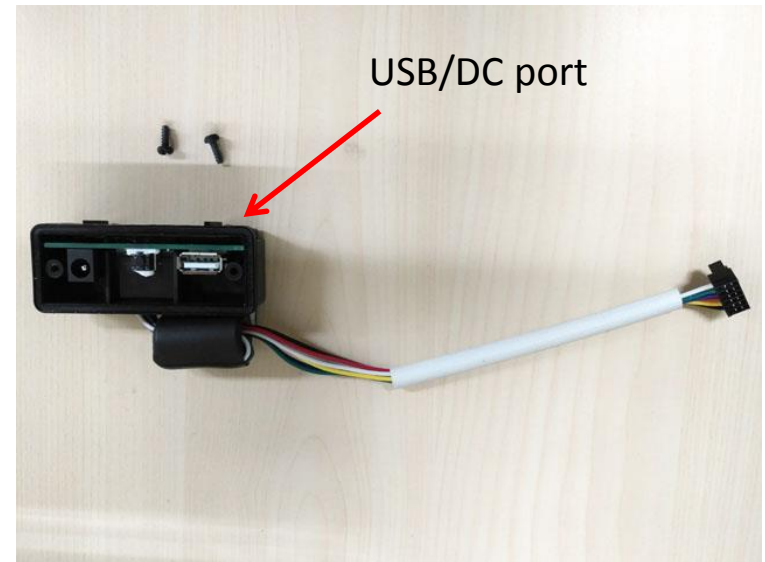
Cell assembly



Description	Part Number	Qty
Wire Harness #1	4860428001	1
Wire Harness Assembly	4860541001	1

Replace The Housing cover

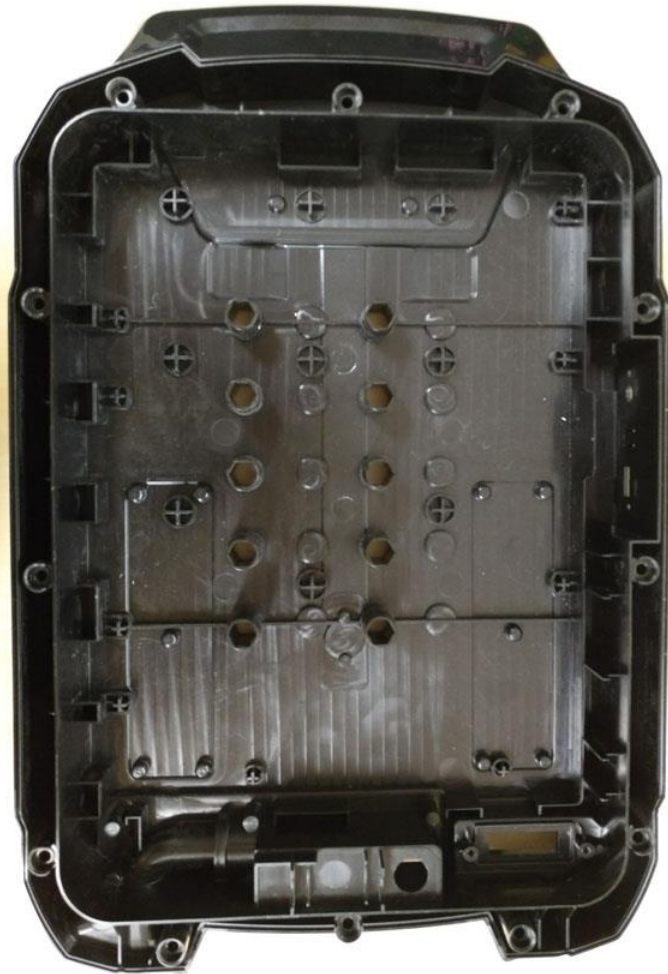
8. Remove the two screws and take out the USB/DC port. If it is damaged, replace with a new one.



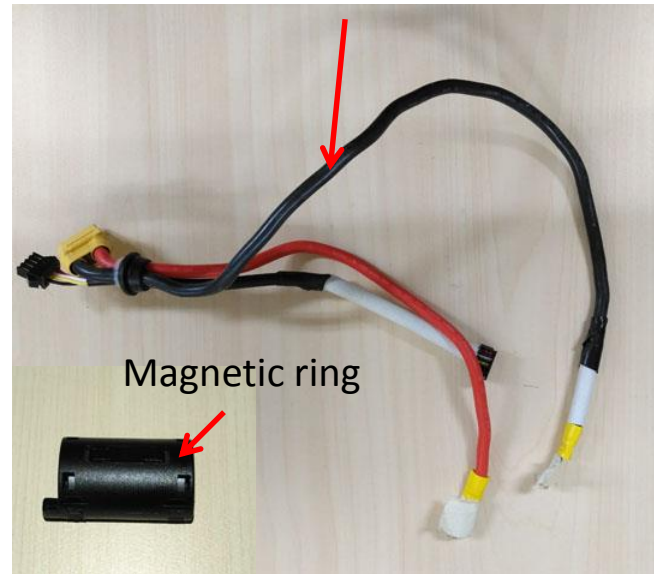
Description	Part Number	Qty
Screw	5610330001	2
USB/DC Port	2830251001	1

Replace The Housing cover

9. Remove the magnetic ring from the wire harness and separate the wire harness from the lower housing. If they are damaged, replace with a new one.



Wire harness

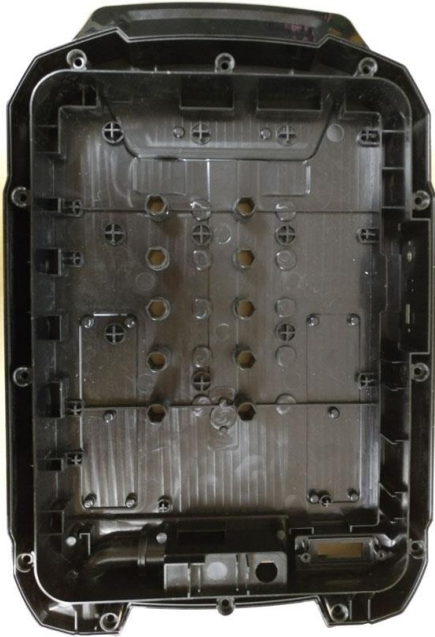


Magnetic ring

Description	Part Number	Qty
Wire Harness	4860427001	1
Lower housing	3128800001	1
Magnetic Ring	3680239001	1

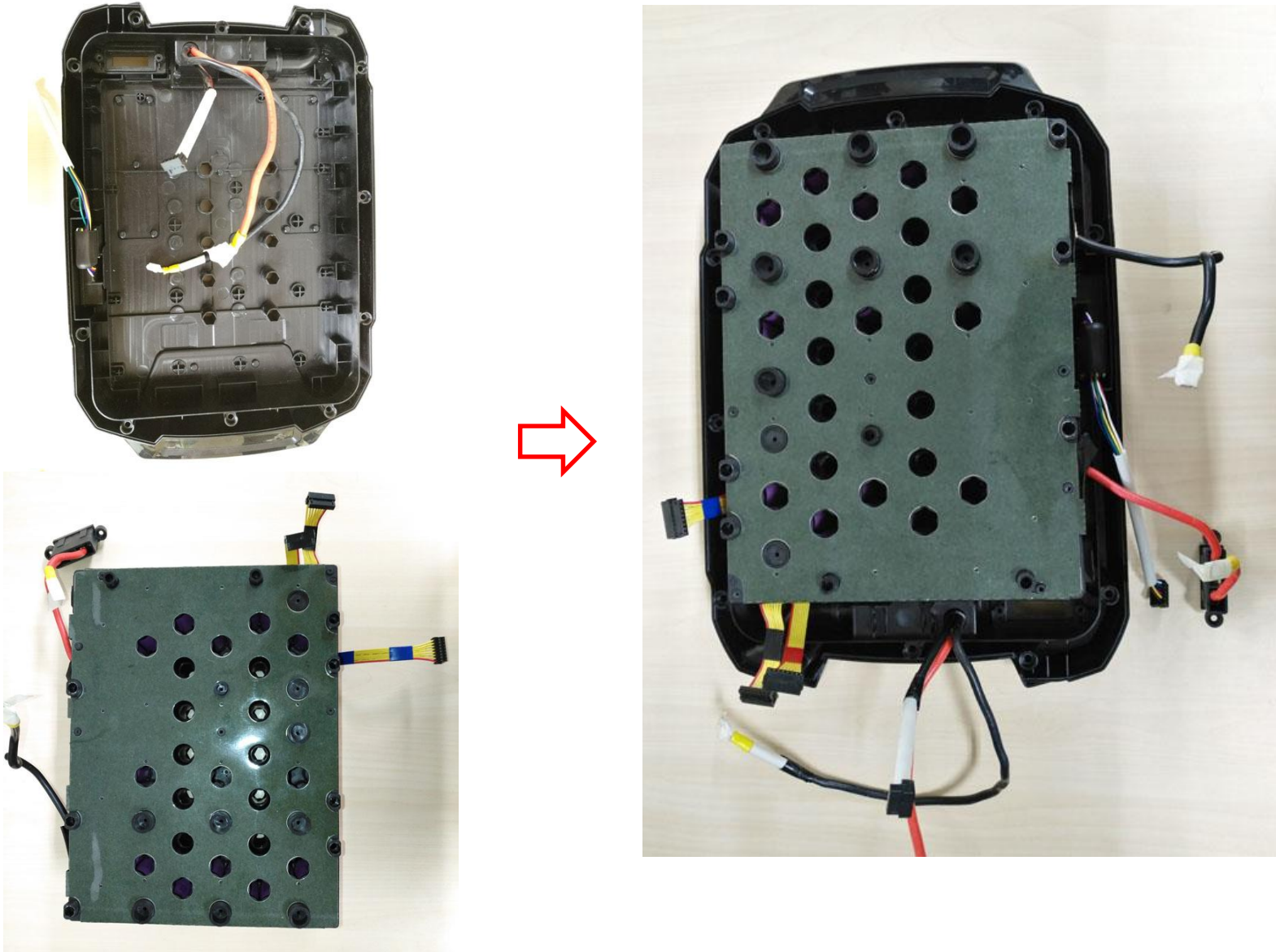
Assembly Flow Chart

1

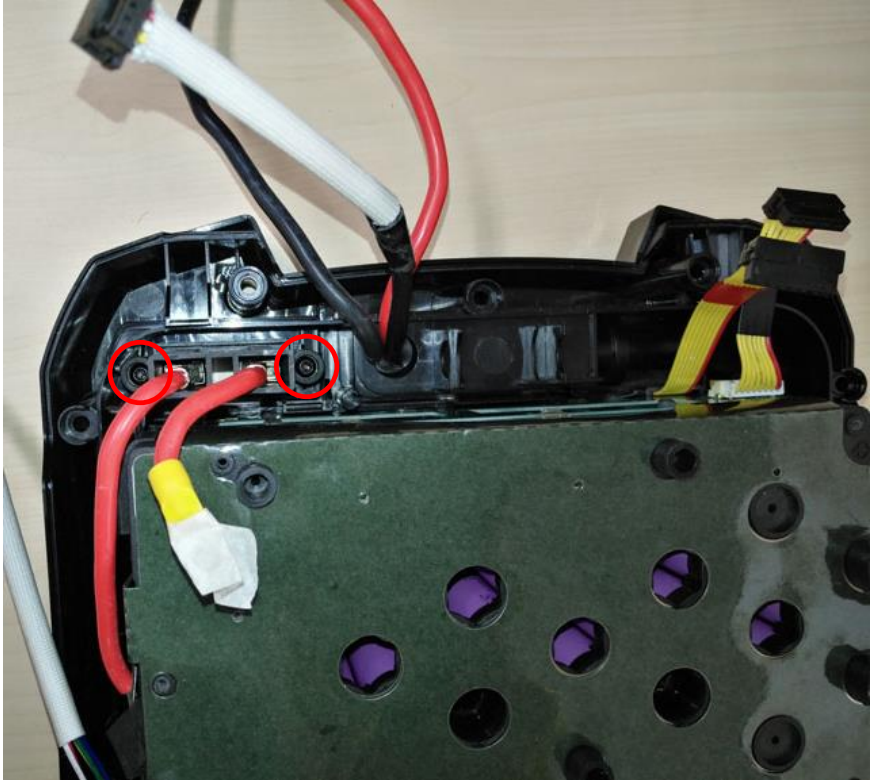
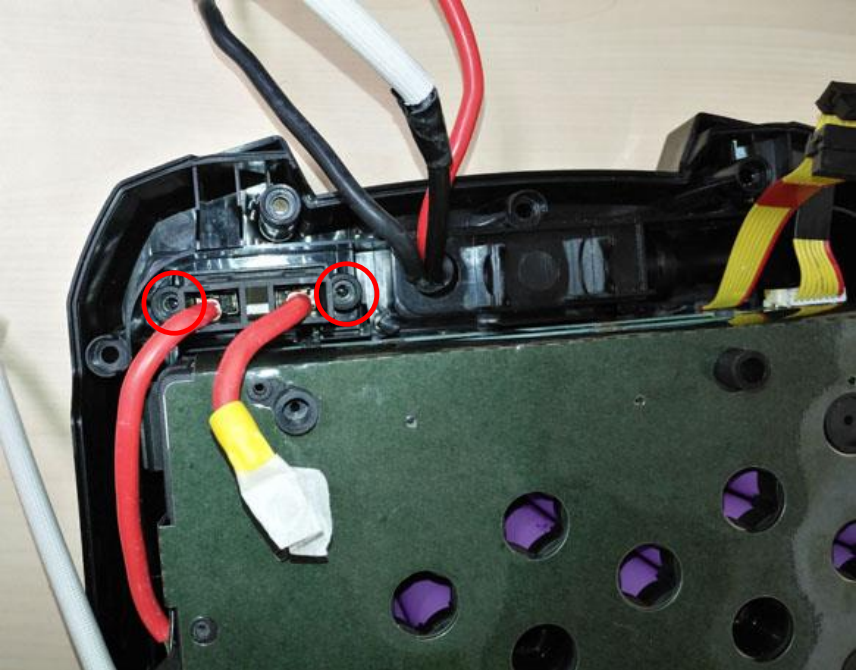


Assembly Flow Chart

2

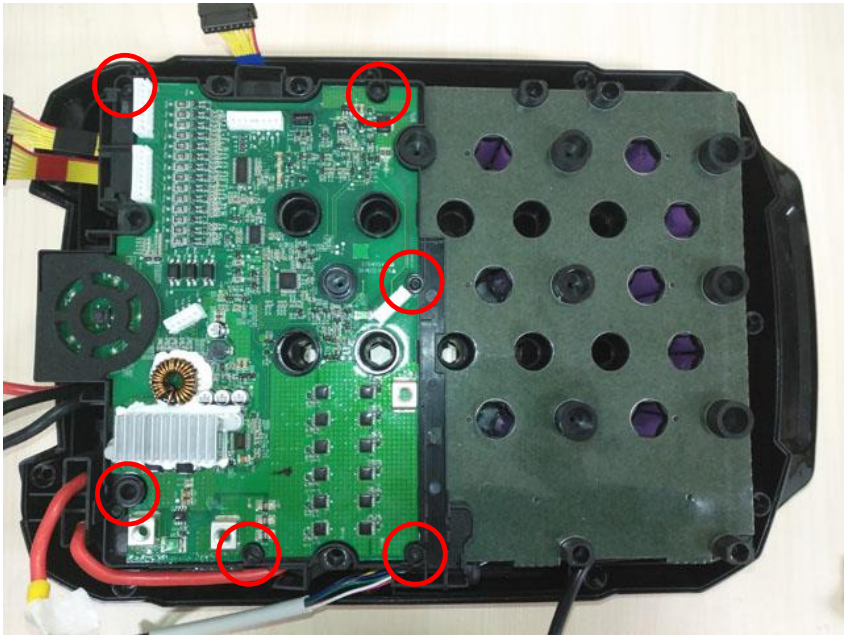


3

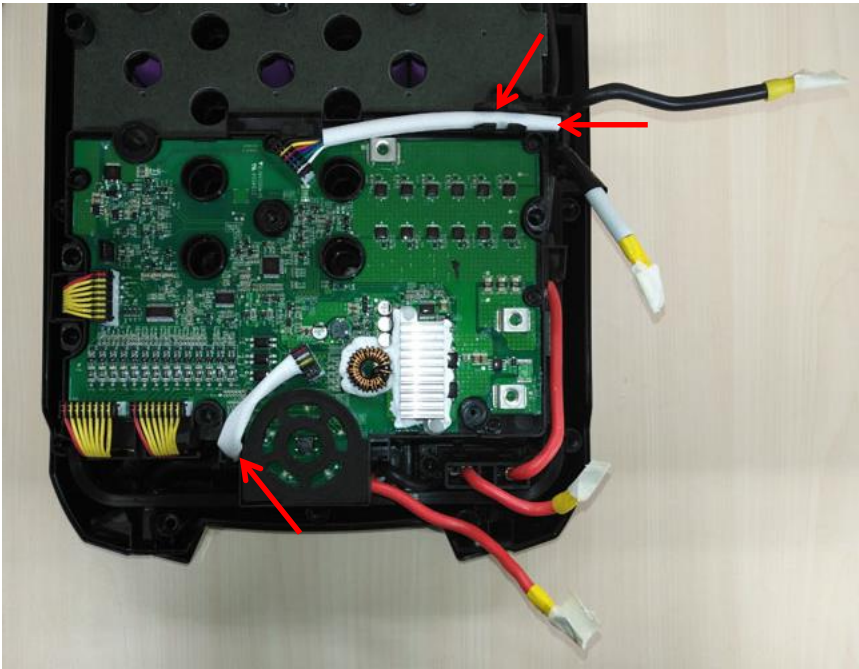
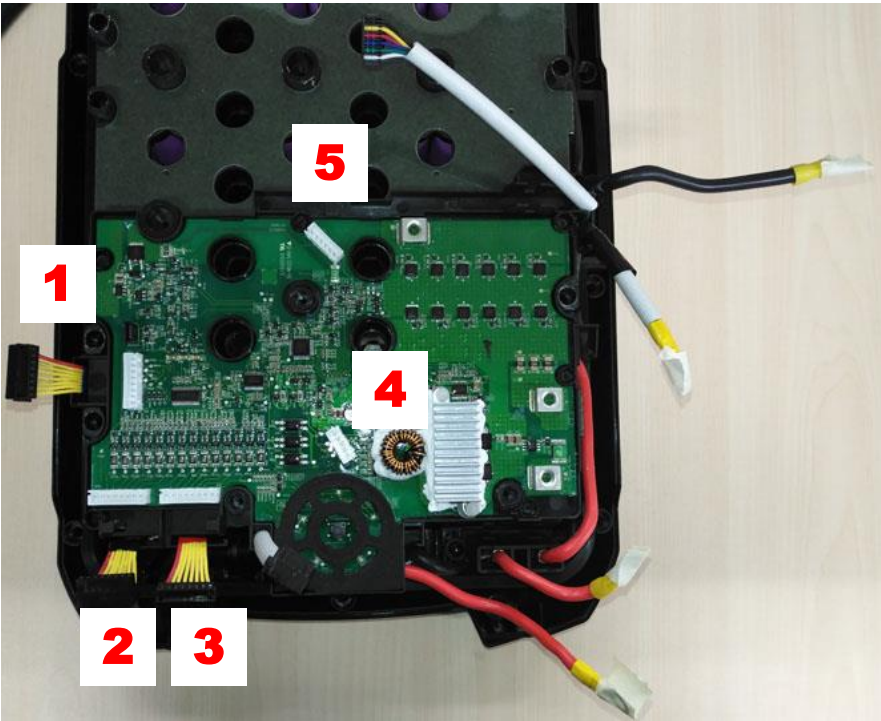


Assembly Flow Chart

4



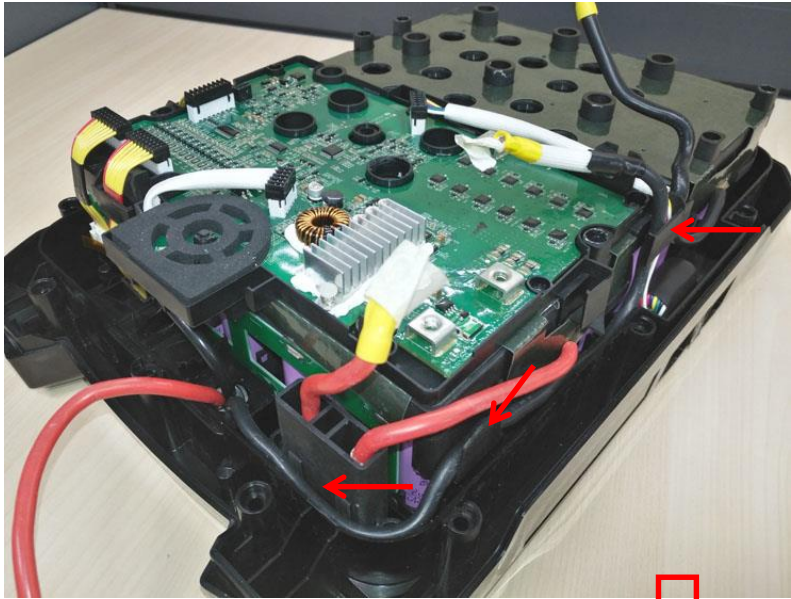
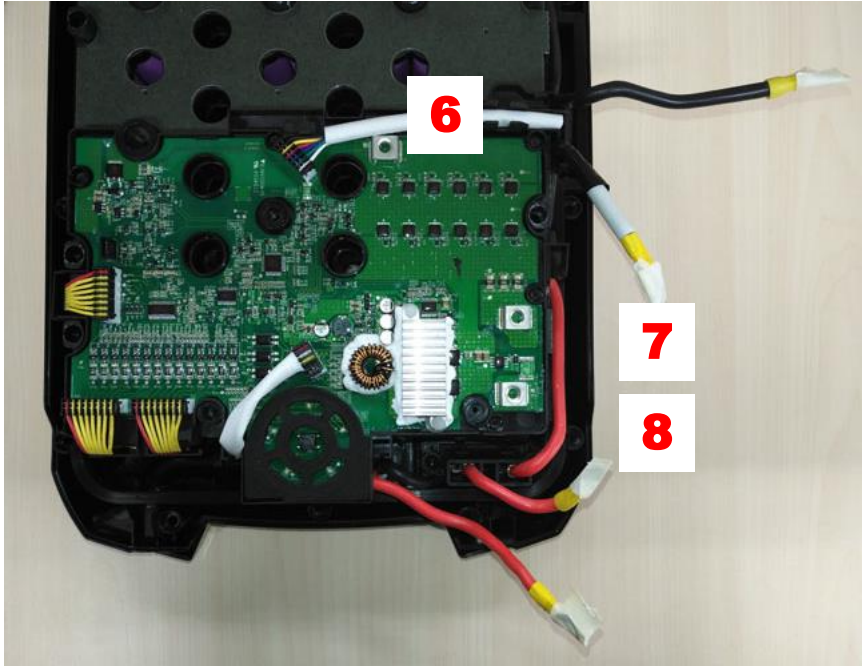
5



WARNING: You must connect the wire to the PCBA in sequence.

Assembly Flow Chart

6



WARNING: You must connect the wire to the PCBA in sequence.

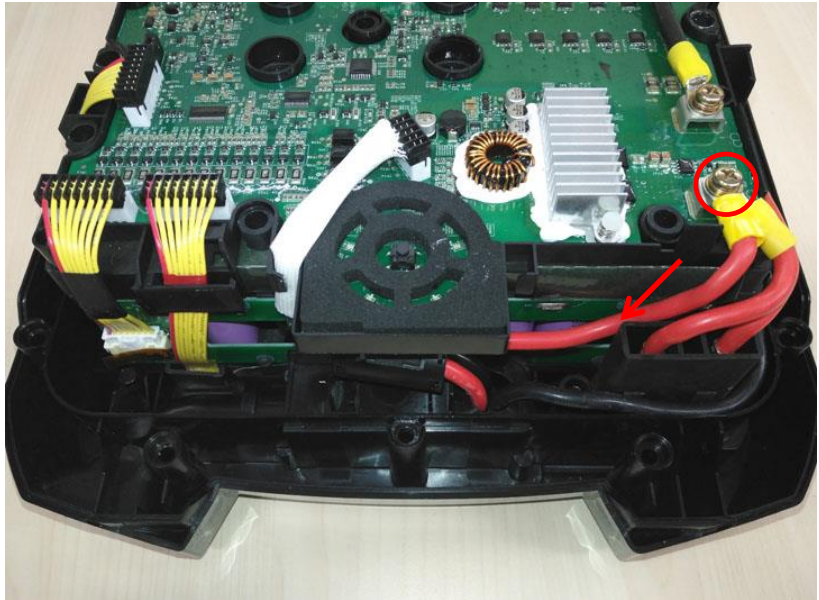
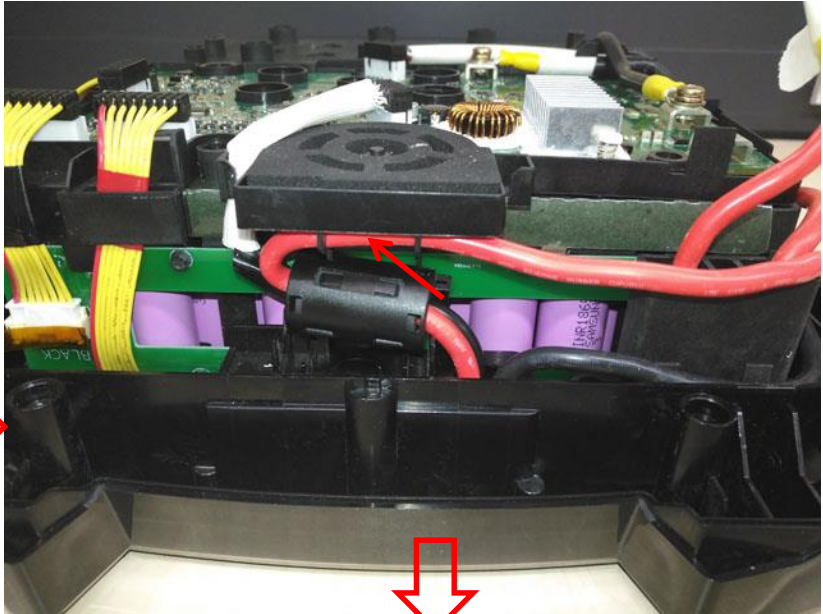
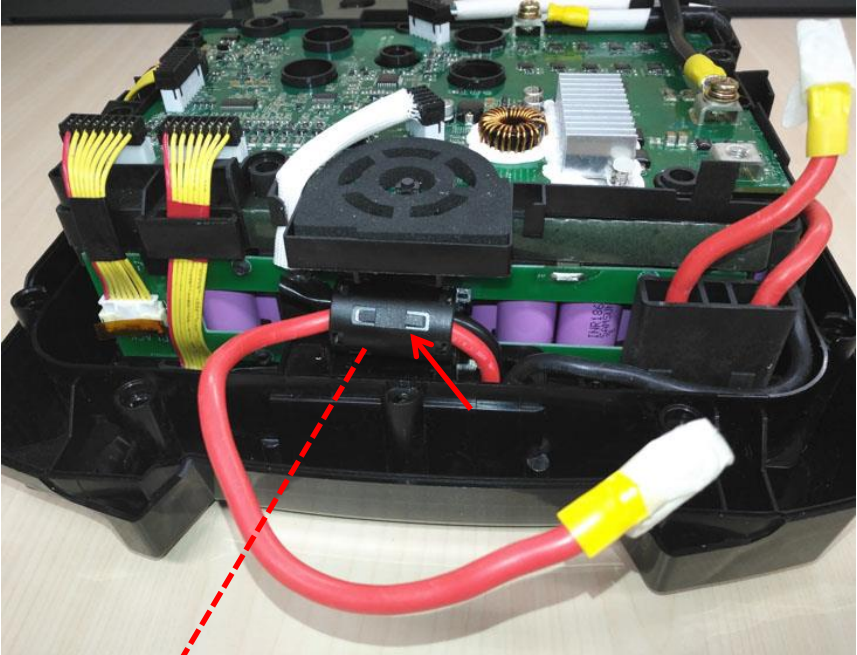
7



WARNING: You must connect the wire to the PCBA in sequence.

Assembly Flow Chart

8



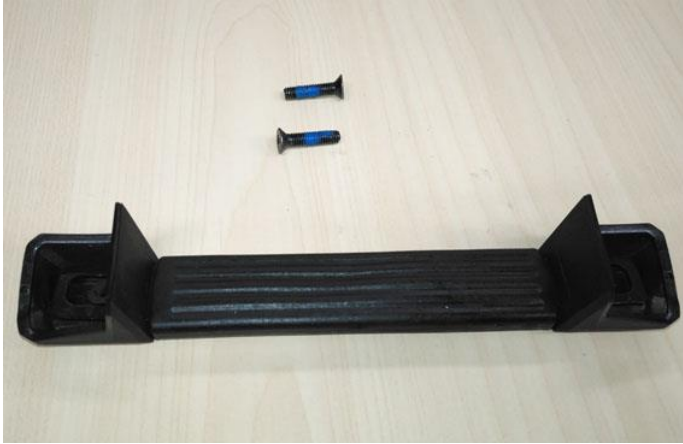
WARNING: You must connect the wire to the PCBA in sequence.

9

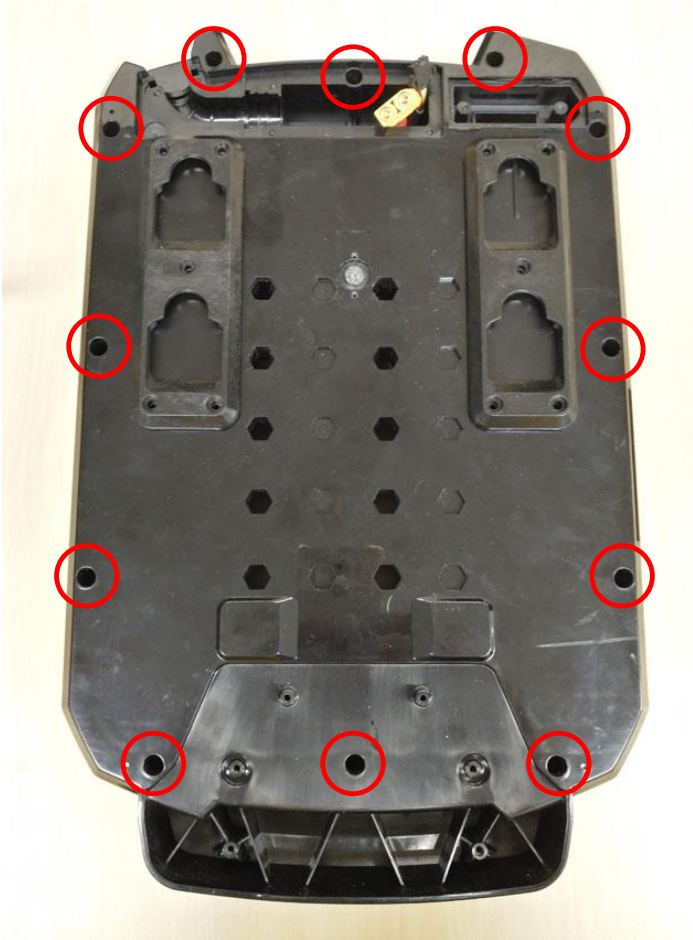


Assembly Flow Chart

10



11



12



13



14



15

