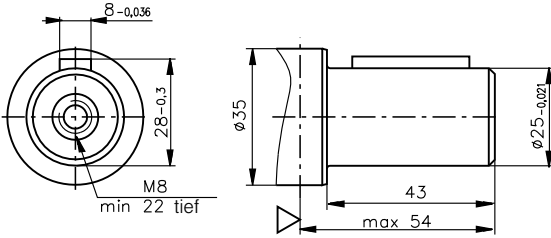
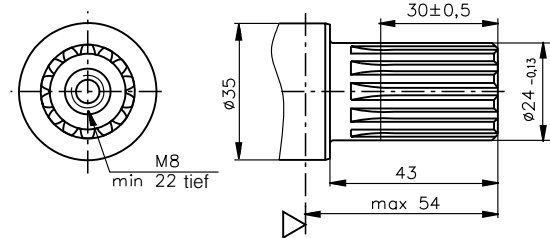


# Übersicht Erweiterungen Welle Index des expansions pour des arbres

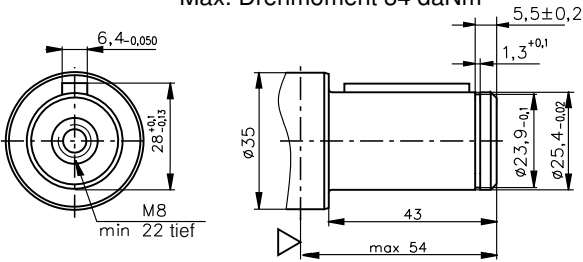
**C** - Ø25 gerade, Parallele Schlüssel ABx7x30 DIN 6885  
Max. Drehmoment 34 daNm



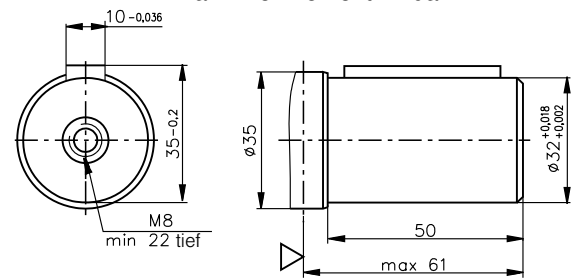
**SA** - keilwellig B52x22 DIN 5482  
Max. Drehmoment 40 daNm



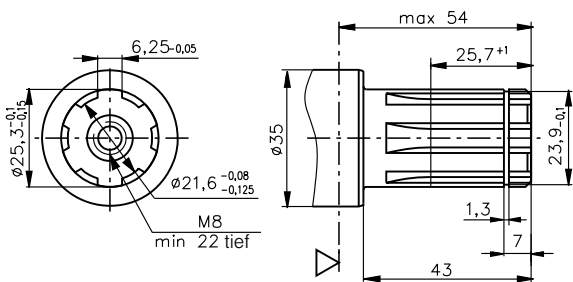
**CO** - Ø1" gerade, Parallele Schlüssel 1/4"x1/4"x1 1/4" BS46  
Max. Drehmoment 34 daNm



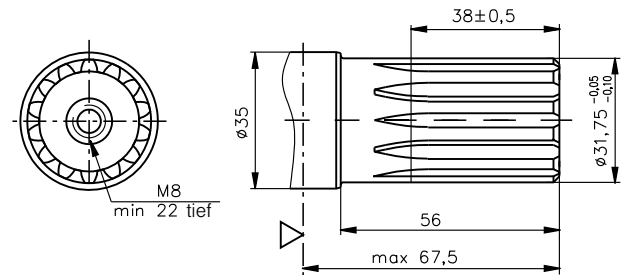
**CB** - Ø25 gerade, Parallele Schlüssel A10x8x40 DIN 6885  
Max. Drehmoment 77 daNm



**SH** - keilwellig, BS 2059 (SAE 6B)  
Max. Drehmoment 40 daNm



**HB** - Ø 1 1/4" keilwellig 14T, DP12/24 ANSI B92.1-1976  
Max. Drehmoment 95 daNm



**KB** - Kegelig 1:10, Woodruffkey 6x9 DIN 6888  
Max. Drehmoment 95 daNm

