

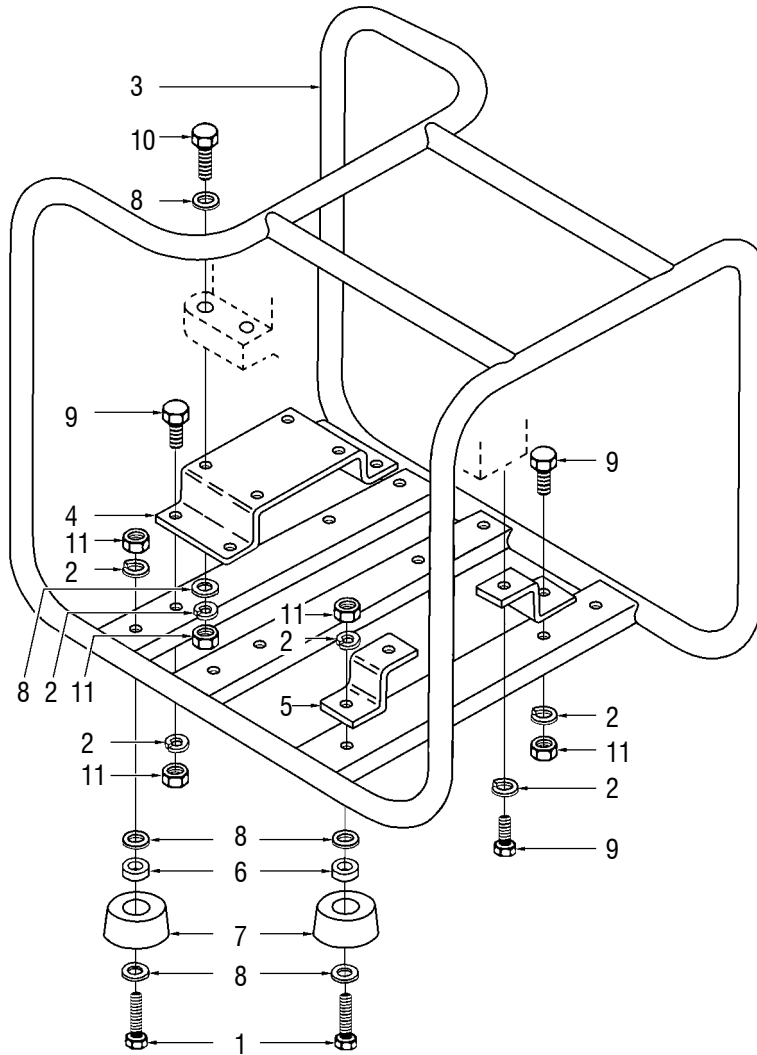
REF NO.	PART NO.	DESCRIPTION	QTY.
1	07578 A	Engine, B&S Industrial Plus 3½hp (S2B) .....	1
	15014	Engine, B&S PowerBuilt 3½hp (S2BP) .....	1
	00971	Engine, Honda GX160 5½hp (S2H) .....	1
2	76885 A	Slinger .....	1
3	80088	Screw, Hex Head, 5/16-18 x 1-1/4" .....	4
4	83002	Lockwasher, 5/16" .....	4
5	62987 2A	Impeller Housing .....	1
6	62874	Sealing Washer .....	4
7	80927	Screw, Hex Head, 5/16-24 x 2-1/4" .....	4
8	62861 2	Seal Assembly .....	1
9	62882 A	Seal Shim, .010" .....	AR
	62883 A	Seal Shim, .015" .....	AR
10	84056	Spacer .....	1
11	62872	Impeller Shim, .010" .....	AR
	62873	Impeller Shim, .015" .....	AR
12	62988 2	Impeller .....	1
13	54070 A	Gasket, Large .....	2
14	54066 1A	Wear Plate .....	1
15	54069	Gasket, Small .....	1
16	43969	Filler Plug [includes #17] .....	1
17	18108	Gasket .....	1
18	A 47629	End Housing [includes #19 - 22] .....	1
19	75663 1	Suction Nipple, 2"NPT x 2" .....	1
20	54151 1	Discharge Nipple, 2"NPT x 3-1/2" .....	1
21	08970	Decal, Fill Pump .....	1
22	08971	Decal, Warning .....	1
23	A 43896	Drain Plug [includes #24] .....	1
24	59910	Gasket .....	1
25	09081	Decal, Safety Sign (On Engine) .....	1

**OTHER PARTS & ACCESSORIES:**

PART NO.	DESCRIPTION
A 48373 A	Overhaul Seal Kit
PS 30128	Suction Strainer, 2"
15036	Foot Valve, 2"
L 19955	Owner's Manual
A 15060	Spanner Wrench Kit, 2"
A 15043	Dolly Kit

**TORQUE SPECS**

REF NO.	Inch Pounds	Newton Meters	Notes:
3	130-145	14.7-16.4	
7	130-145	14.7-16.4	



REF NO.	PART NO.	DESCRIPTION	QTY.
1	80088	Screw, Hex Head, 5/16-18 x 1-1/4" .....	4
2	83002	Lockwasher, 5/16" .....	15
3	A 08096	Roll Cage .....	1
4	08101	Engine Support .....	1
5	08102	Pump Support .....	2
6	49733	Foot Spacer .....	4
7	48789	Rubber Foot .....	4
8	84032	Washer, Flat, 5/16" .....	16
9	80083	Screw, Hex Head, 5/16-18 x 3/4" .....	7
10	80087	Screw, Hex Head, 5/16-18 x 1-1/2" .....	4
11	81162	Hex Nut, 5/16-18 .....	13

**TORQUE SPECS**

REF NO.	Inch Pounds	Newton Meters	Notes:
1	130-145	14.7-16.4	
9	205-225	23.2-25.4	17-18.8 Foot Pounds
10	205-225	23.2-25.4	17-18.8 Foot Pounds