

PARTS LIST

CHAIN SAW

G3700

NOTE :

1. Use KOMATSU ZENOAH genuine parts specified in the parts list for repair and/or replacement.
2. KOMATSU ZENOAH does not warrant the machines, those which have been damaged by the use of any parts other than those specified by the company.
3. When placing orders of parts for repair and/or replacement, check if the model name and the serial number are suitable to those specified in the parts list, then use parts number described in the parts list.
4. The contents described in the parts list may change due to improvement.
5. The parts for the machine shall be supplied within ten (10) years after the machine is discontinued.
[It is possible that some specific parts may be subject to change of their delivery term and list price within the limit of ten (10) years after the machine is discontinued. And it is also possible that some parts may be available even after the limit of ten (10) years.]

Fig.1 CLUTCH, IGNITION, POWER UNIT

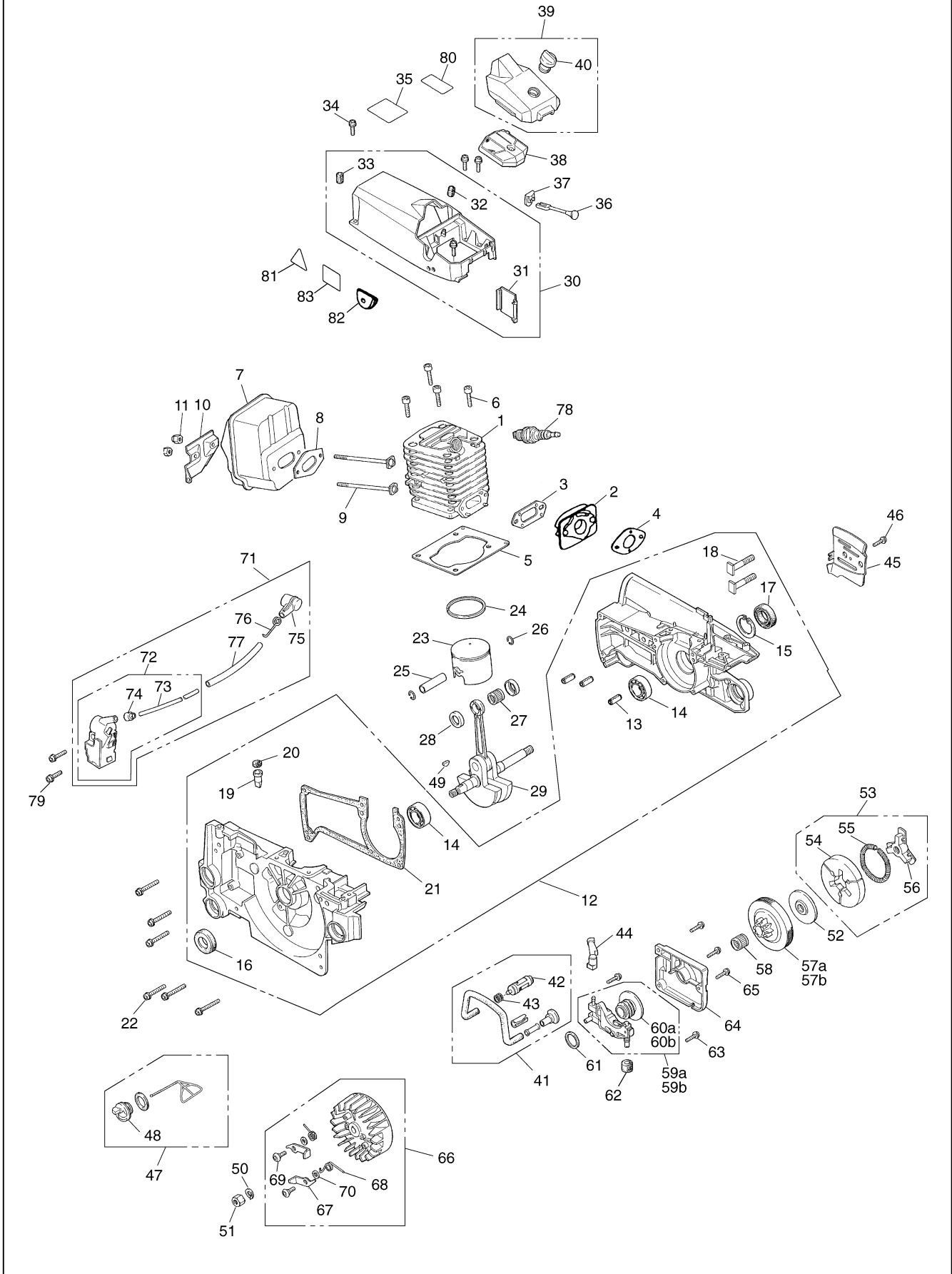


Fig.1 CLUTCH, IGNITION, POWER UNIT

Key#	PART NUMBER	DESCRIPTION	Q'TY /UNIT	NOTE	Key#	PART NUMBER	DESCRIPTION	Q'TY /UNIT	NOTE
1	2898-12111	Cylinder	1		57a	2851-51111	Clutch drum (325P-7)	1	
2	2867-14110	Insulator	1		57b	2850-51111	Clutch drum (1/4P-8)	1	
3	2850-14123	Gasket (K2867-06010)	1		58	3310-51310	Needle bearing 10x13x13	1	
4	3330-14121	Gasket (K2867-06010)	1		59a	848C706713	Oil pump (325P)	1	
5	2850-14212	Gasket, Cylinder (K2867-06010)	1		59b	848C606713	Oil pump (1/4P)	1	
6	4820-13180	Bolt, Cylinder M5x20	4		60a	2851-55121	• Worm (7T)	1	
7	848C711511	Muffler	1		60b	2850-55121	• Worm (8T)	1	
8	T2100-15210	Gasket, Muffler	1		61	2850-55211	Washer	1	
9	3356-15220	Bolt, Muffler	2		62	2670-55220	Seal	1	
10	2867-15310	Stay	1		63	2670-55410	Screw M4x14	2	
11	2850-15230	Nut, Muffler M5	2		64	2850-55611	Pump cover	1	
12	848C602108	Crankcase assy	1		65	2670-55410	Screw M4x14	3	
13	3356-21130	• Spring Pin 5.2x10	3		66	2867-71100	Rotor assy	1	
14	2850-21240	• Bearing 12x32x10	2		67	2850-71120	• Pole	2	
15	04065-03212	• Snap Ring ø32	1		68	3350-71131	• Spring	2	
16	8488AC2200	• Oil Seal 12x22x7	1		69	2850-71140	• Screw M5x12	2	
17	2630-43150	• Oil Seal 12x32X5.5	1		70	2850-71151	• Washer 5x10x10	2	
18	2850-21230	• Bolt	2		71	2850-71302	Coil assy	1	
19	2850-21260	• Valve, Oil	1		72	2850-71202	• Coil Complete	1	
20	2850-21250	• Valve Seal	1		73	2850-71220	•• Cord	1	
21	848C6021D3	• Gasket, Case (K2867-06010)	1		74	2670-71230	•• Grommet	1	
22	4820-21310	Bolt M5x30	6		75	2850-72110	• Plug cap	1	
23	T2100-41110	Piston ø39	1		76	1400-72121	• Spring	1	
24	T2100-41210	Piston Ring ø39	1		77	2850-71320	• Tube 6x7x80	1	
25	2850-41310	Piston Pin7x10x31.5	1		78	3699-90032-10	Spark plug (RCJ7Y)	1	
26	1300-41320	Snap Ring	2		79	2670-14220	Screw M5x20	2	
27	T2100-41410	Needle Bearing 10x14x10.7	1		80	848C6490H0	LABEL, 1/4P	1	
28	2850-41510	Washer	2		81	848C1B90G0	LABEL, hot mark	1	
29	848C604203	Crankshaft comp.	1		82	2867-82320	Grommet	1	
30	2850-31103	Cylinder cover comp.	1		83	T2990-21120	LABEL (120dB)	1	
31	2856-31120	• Cap, Cylinder cover	1						
32	2810-83410	• Grommet, Air cleaner	1						
33	3356-31152	• Grommet, Cylinder	1						
34	2670-14320	Screw M5x14	4						
35	848C6490F0	Label	1						
36	2850-82411	Choke rod	1						
37	2850-82421	Grommet, Choke	1						
38	2850-83100	Air cleaner comp.	1						
39	2850-83303	Cleaner cover comp.	1						
40	2841-83320	• Knob	1						
41	2850-23101	Oil pipe comp.	1						
42	2670-23131	• Oil filter	1						
43	3310-82230	• Clip	1						
44	2850-23211	Oil pipe, out let	1						
45	T2002-25410	Guide Plate(A)	1						
46	2670-25430	Screw M4x10	1						
47	2841-31801	Oil cap assy	1						
48	2841-31820	• Gasket, cap	1						
49	1000-43240	Key	1						
50	0290-20820	Washer	1						
51	3350-43231	Nut M8	1						
52	2850-51211	Plate	1						
53	848C605122	Clutch assy	1						
54	3317-51220	• Clutch shoe	3						
55	3317-51231	• Spring	1						
56	848C6051F1	• Boss(B)	1						

Fig.2 BREAKING, STARTING, FUELING SYSTEMS

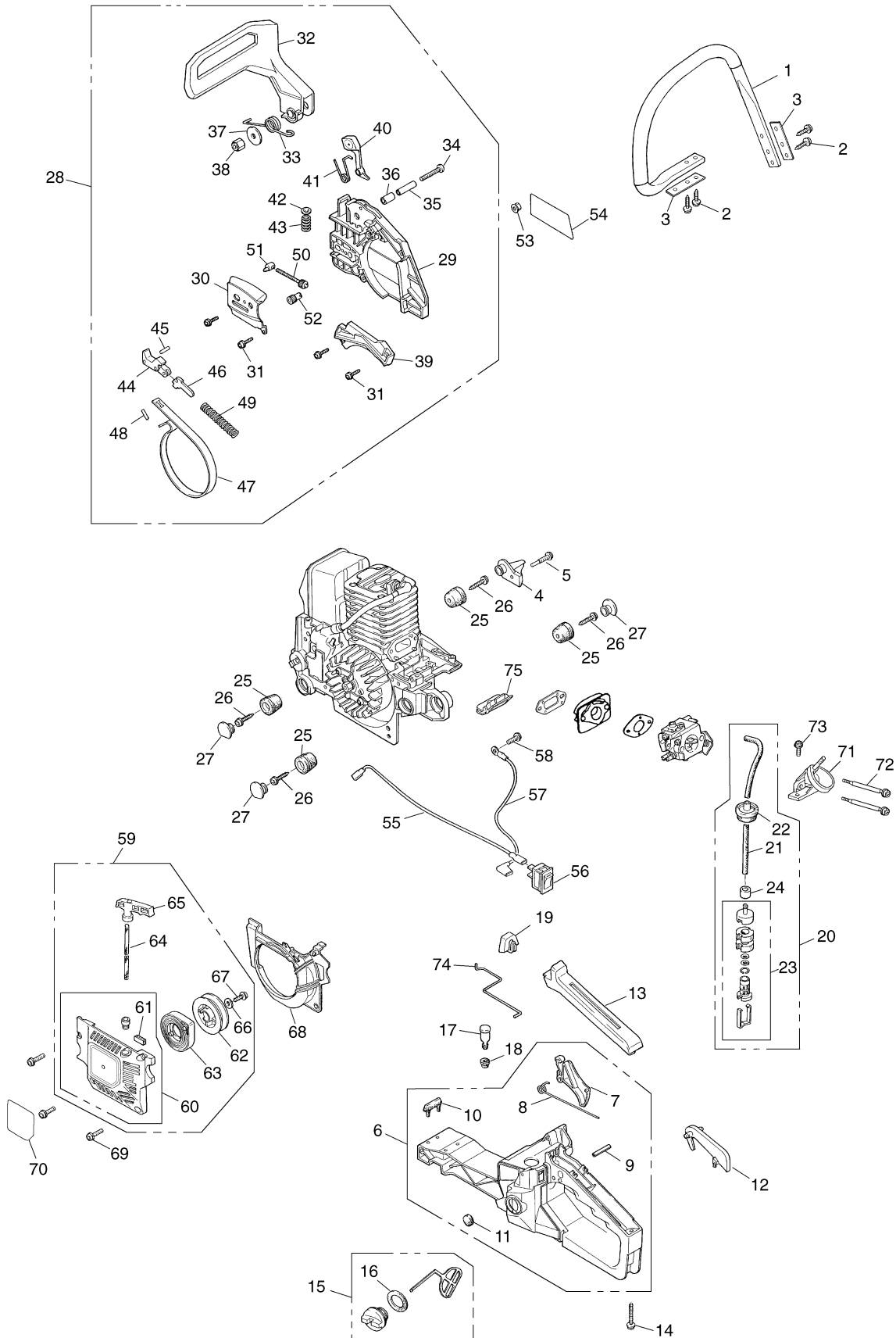


Fig.2 BREAKING, STARTING, FUELING SYSTEMS

Key#	PART NUMBER	DESCRIPTION	Q'TY /UNIT	NOTE	Key#	PART NUMBER	DESCRIPTION	Q'TY /UNIT	NOTE
1	2851-32111	Left handle	1		57	2850-74213	Cord	1	
2	8488252711	Screw M5x27	4		58	2670-14130	Screw M5x10	1	
3	2851-32180	Plate	2		59	2867-75000	Starter assy	1	
4	2850-25211	Chain catcher	1		60	2850-75102	• Recoil case comp.	1	
5	2850-25220	Screw, Stopper M5x33	1		61	2850-75150	•• Cushion	1	
6	2850-33007	Right handle assy	1		62	2850-75211	• Reel	1	
7	2850-33313	• Throttle lever	1		63	2850-75301	• Spring comp.	1	
8	3356-33321	• Throttle spring	1		64	3317-75410	• Rope	1	
9	04025-00524	• Spring pin 5.2x24	1		65	3330-75421	• Knob	1	
10	2670-33280	• Damper(A)	1		66	1400-86280	• Washer	1	
11	2850-33370	• Helper, Magnetto	1		67	8488251901	• Screw TP5x19	1	
12	848C3033E3	Arm	1		68	2850-75611	Fan cover	1	
13	2850-34111	Grip cover	1		69	2670-14320	Screw M5x14	3	
14	8488252711	• Screw M5x27	1		70	848C6490C0	Label, recoil	1	
15	2670-34401	Tank cap assy	1		71	2850-82114	Manifold	1	
16	2670-34430	• Gasket, Tankcap	1		72	2867-82210	Bolt M4x70	2	
17	2850-34501	Breather assy	1		73	2670-14320	Screw M5x14	1	
18	3317-85120	Grommet	1		74	2850-82511	Throttle rod	1	
19	2850-34150	Helper, rear	1		75	T2100-82520	Grommet, throttle	1	
20	2851-34302	Fuel pipe assy	1						
21	2850-34311	• Fuel pipe	1						
22	2851-34321	• Grommet	1						
23	3302-85400	• Filter assy	1						
24	2850-34350	• Collar	1						
25	2616-35141	Damper	4						
26	8488251601	Screw M5x16	4						
27	2856-35180	Damper cap	3						
28	848C645408	Chain brake assy	1						
29	2850-53117	• Chain cover	1						
30	2850-53250	• Guide plate (B)	1						
31	2670-54630	• Screw M4x12	4						
32	848C6054A2	• Front guard	1						
33	2850-54120	• Return spring	1						
34	2850-54130	• Screw M5x40	1						
35	2850-54140	• Spacer inner	1						
36	2850-54211	• Spacer outer	1						
37	3330-75411	• Washer	1						
38	3310-53331	• Nut(B) M5 Nylon nut	1						
39	2850-54626	• Spring cover	1						
40	848C605423	• Weight	1						
41	2872-54230	• Spring	1						
42	2851-54260	• Stopper plate	1						
43	2851-54270	• Spring	1						
44	2851-54301	• Brake lever comp.	1						
45	2851-54350	• Roller	1						
46	2670-54411	• Slide arm	1						
47	2851-54510	• Brake band	1						
48	3356-24140	• Roller	1						
49	2670-54610	• Brake spring	1						
50	2671-53210	• Screw	1						
51	2810-53221	• Nut	1						
52	2671-53230	• Gear	1						
53	3350-53410	Nut M8	2						
54	848C6490B0	Label, Chain cover	1						
55	2850-71513	Switch cord	1						
56	2850-74102	Switch assy	1						

Fig.3 CARBURETOR

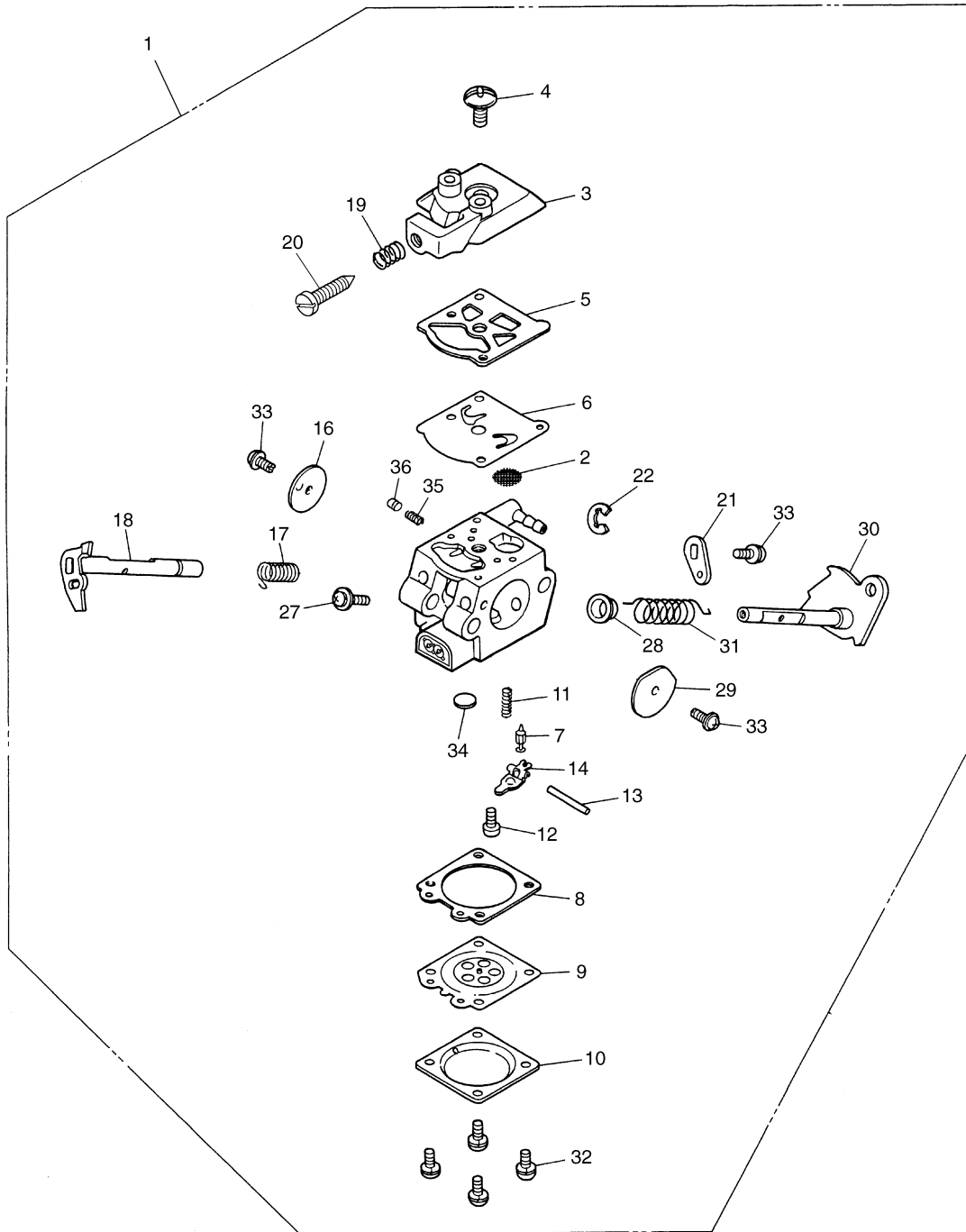


Fig.3 CARBURETOR

Key#	PART NUMBER	DESCRIPTION	Q'TY /UNIT	NOTE	Key#	PART NUMBER	DESCRIPTION	Q'TY /UNIT	NOTE
1	848C648100	Carburetor assy	1	WT753					
2	3306-81380	• Screen	1						
3	2850-81120	• Pump cover	1						
4	3310-81130	• Screw	1						
5	3304-81140	• Gasket, pump	1						
6	3304-81150	• Diaphragm, pump	1						
7	3356-81310	• Valve	1						
8	2850-81290	• Gasket	1						
9	3310-81260	• Diaphragm	1						
10	3310-81280	• Cover	1						
11	2867-81270	• Spring	1						
12	3310-81240	• Screw M lever pin	1						
13	3310-81250	• Pin, lever	1						
14	3310-81230	• Lever	1						
16	3356-81340	• Throttle valve	1						
17	2670-81410	• Throttle spring	1						
18	848C7181T0	• Throttle shaft	1						
19	3350-81380	• Idle spring	1						
20	2630-81330	• Idle screw	1						
21	2670-81440	• Throttle lever	1						
22	1148-81390	• Ring	1						
27	2850-81190	• Screw	1						
28	2850-81430	• Bush	1						
29	2670-81450	• Choke valve	1						
30	2850-81461	• Choke shaft	1						
31	T2002-81350	• Choke spring	1						
32	3310-81351	• Screw	4						
33	2880-81470	• Screw, valve	3						
34	1480-81420	• Plug	1						
35	2810-81530	Spring	1						
36	848C7180N0	Piston	1						

Fig.4 GUIDE BAR, SAW CHAIN, TOOLS

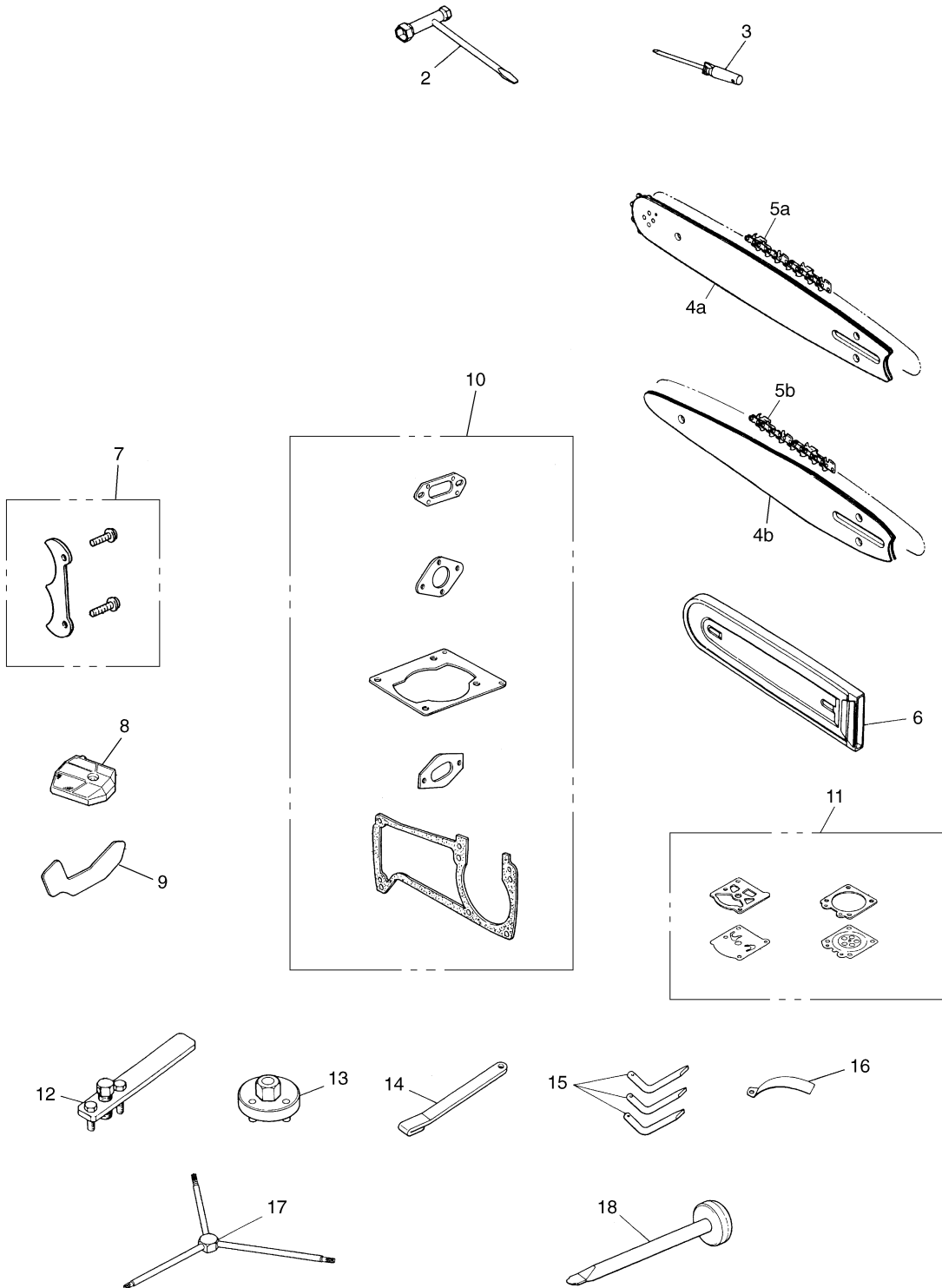


Fig.4 GUIDE BAR, SAW CHAIN, TOOLS

Key#	PART NUMBER	DESCRIPTION	Q'TY /UNIT	NOTE	Key#	PART NUMBER	DESCRIPTION	Q'TY /UNIT	NOTE
2	3320-91140	Plug 13x19	1						
3	2670-91150	Driver	1						
4a	848CB44C10	Bar 14" SP	1						
4b	848CB14020	Bar 14" CV	1						
5a	848CC95V60	Chain (95VP-60E)	1						
5b	3311-52210	Chain (25AP-76E)	1						
6	3617-97110	Protector	1						
7	2850-98100	Spike kit	1						
8	2850-98300	Air cleaner comp.	1	OP					
9	2850-98210	Snow protector	1	OP					
10	2867-06010	Gasket kit	1	OP					
11	T2100-06020	Gasket kit	1	OP					
12	2890-96100	Puller assy (for rotor)	1	OP					
13	2670-96210	Wrench (for clutch)	1	OP					
14	2670-96220	Stopper (for piston)	1	OP					
15	2670-96240	Wrench (for clutch assy)	3	OP					
16	3350-96240	Gauge	1	OP					
17	2850-96410	Wrench	1	OP					
18	2670-96510	Guide (for brake spring)	1	OP					



KOMATSU ZENOAHI CO.

1-9 Minamidai, Kawagoe, Saitama, 350-1192 Japan

PRINTED IN JAPAN

PRINTED ON RECYCLED PAPER
IMPRIMÉ SUR PAPIER RECYCLÉ
GEDRUCKT AUF RECYCLING PAPIER
STAMPATO SU CARTA RICICLATA
IMPRESO EN PAPEL RECICLADO