



PARTS LIST

CHAIN SAW

G5000

NOTE :

1. Use ZENOAH genuine parts specified in the parts list for repair and/or replacement.
2. ZENOAH does not warrant the machines, those which have been damaged by the use of any parts other than those specified by the company.
3. When placing orders of parts for repair and/or replacement, check if the model name and the serial number are suitable to those specified in the parts list, then use parts number described in the parts list.
4. The contents described in the parts list may change due to improvement.
5. The parts for the machine shall be supplied within ten (10) years after the machine is discontinued.
[It is possible that some specific parts may be subject to change of their delivery term and list price within the limit of ten (10) years after the machine is discontinued. And it is also possible that some parts may be available even after the limit of ten (10) years.]

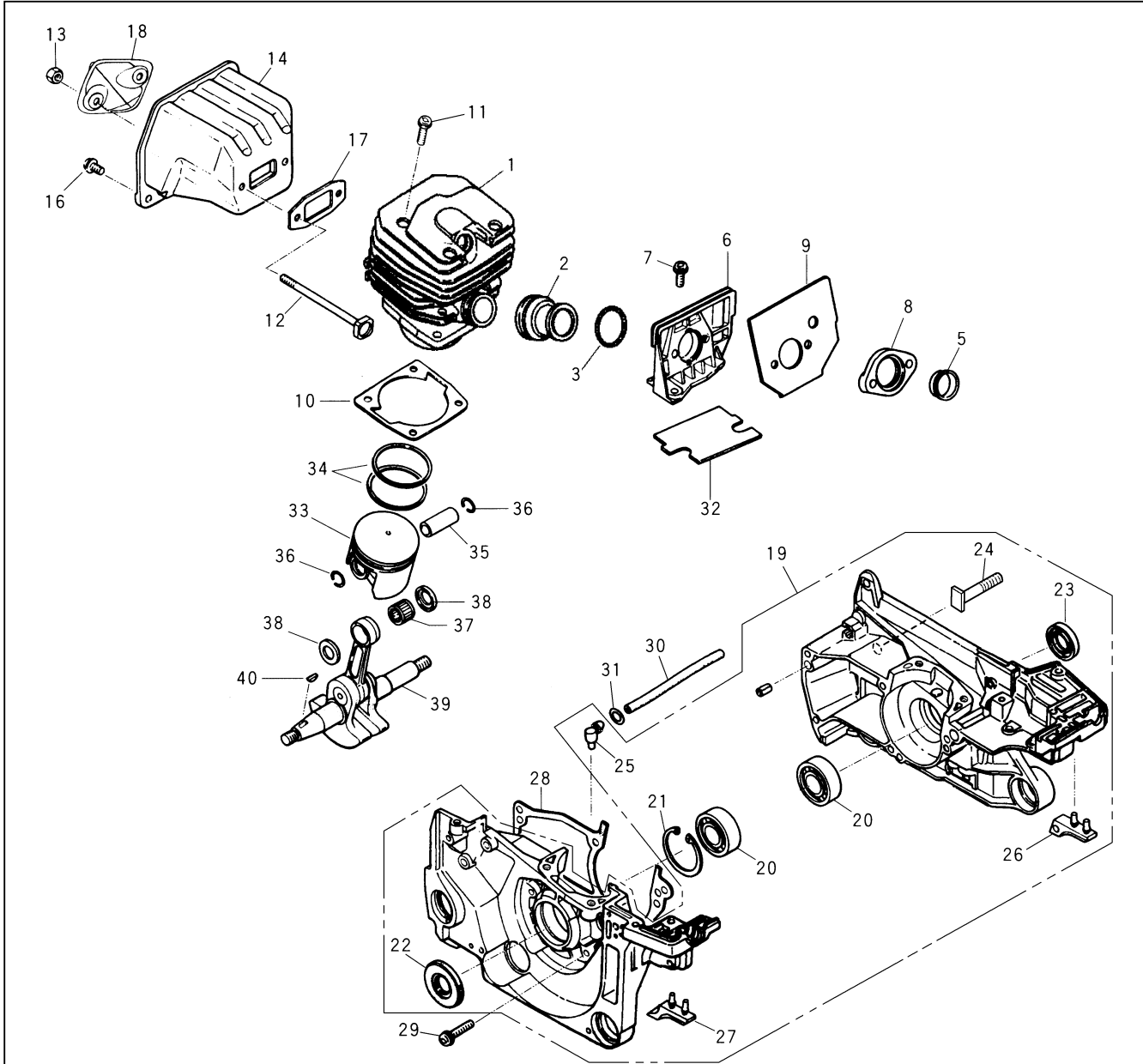
APPLICABLE SERIAL NUMBERS:

800001 and up

May 2008

Fig.1 ENGINE BLOCK, MUFFLER

G5000

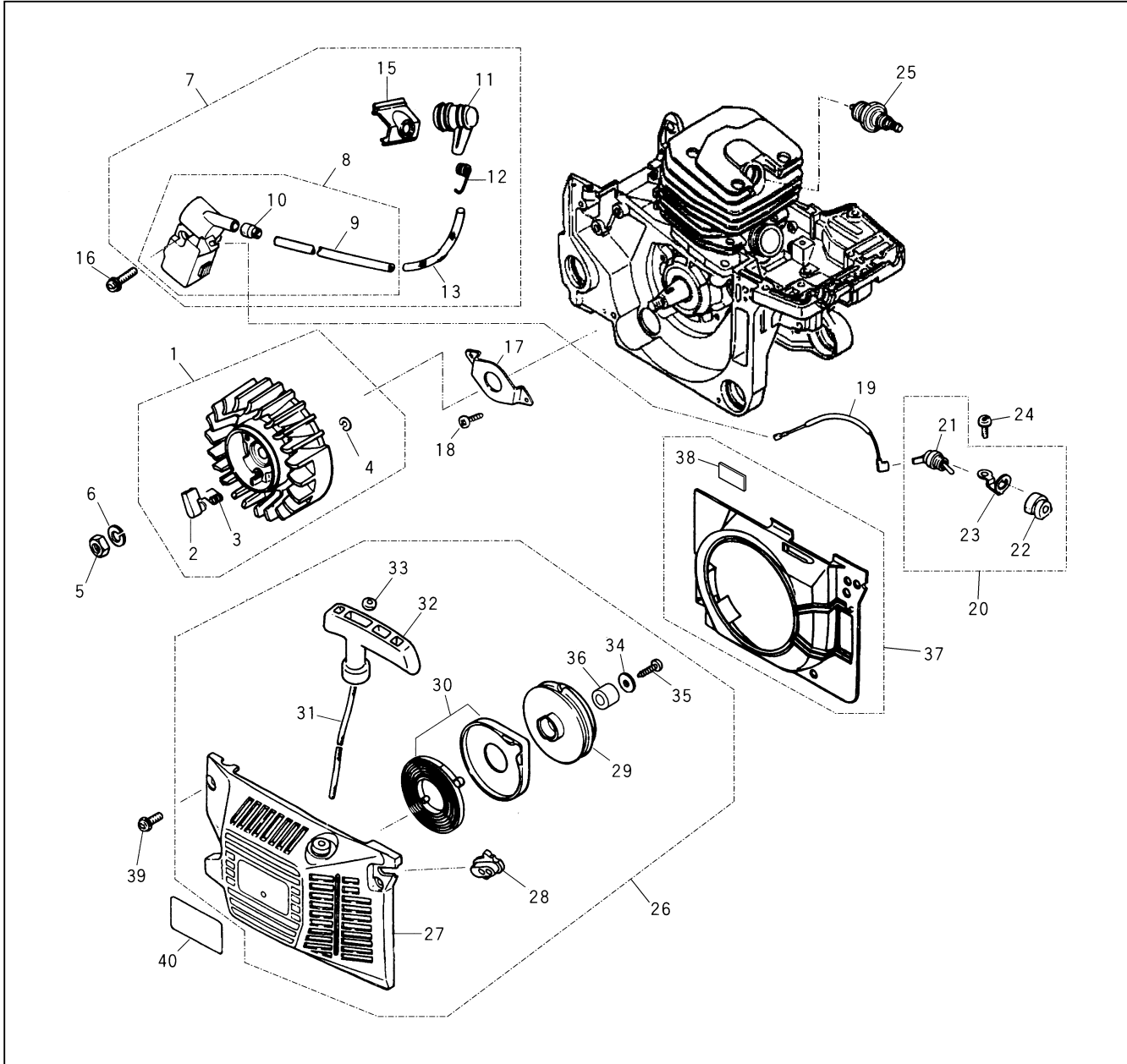


| Key# | PART NUMBER | DESCRIPTION | Q'TY /UNIT | NOTE | Key# | PART NUMBER | DESCRIPTION | Q'TY /UNIT | NOTE |
|------|-------------|----------------|------------|------|------|-------------|------------------|------------|------|
| 1 | 2880-12111 | CYLINDER | 1 | | 24 | 2850-21230 | • BOLT | 2 | |
| 2 | 2880-14111 | PIPE | 1 | | 25 | 2670-21250 | • ELBOW | 1 | |
| 3 | 2880-14120 | SPRING | 1 | | 26 | 2810-22511 | • STOPPER | 1 | |
| 5 | 2880-14150 | GUIDE | 1 | | 27 | 2810-22521 | • STOPPER | 1 | |
| 6 | 2670-14311 | BRACKET | 1 | | 28 | 848C8021D2 | GASKET | 1 | *1 |
| 7 | 2670-14320 | SCREW | 2 | | 29 | 2670-21320 | SCREW | 5 | |
| 8 | 2880-14350 | SPACER | 1 | | 30 | 2810-22210 | PIPE | 1 | |
| 9 | 2880-14361 | GASKET | 1 | | 31 | 3310-82230 | CLIP | 1 | |
| 10 | 2670-14211 | GASKET | 1 | *1 | 32 | 2810-22411 | MAT | 1 | |
| 11 | 4820-13180 | BOLT | 4 | | 33 | 2880-41110 | PISTON | 1 | |
| 12 | 2810-15220 | BOLT | 2 | | 34 | 2880-41210 | RING | 2 | |
| 13 | 2850-15230 | NUT | 2 | | 35 | 2880-41310 | PIN | 1 | |
| 14 | 2823-15114 | MUFFLER | 1 | | 36 | 3350-41320 | SNAP RING | 2 | |
| 16 | 2670-14130 | SCREW | 2 | | 37 | 1400-41410 | BEARING | 1 | |
| 17 | 3356-15210 | GASKET | 1 | *1 | 38 | 2670-41510 | WASHER | 2 | |
| 18 | 2810-15310 | COVER | 1 | | 39 | 848C8A4202 | CRANKSHAFT COMP. | 1 | |
| 19 | 848C802101 | CRANKCASE ASSY | 1 | | 40 | 1000-43240 | KEY | 1 | |
| 20 | T4012-21240 | • BEARING | 2 | | | | | | |
| 21 | 04065-03515 | • SNAP RING | 1 | | | | | | |
| 22 | 2670-21210 | • SEAL | 1 | | | | | | |
| 23 | 2670-21220 | • SEAL | 1 | | | | | | |

*1 Component of 2810-06012 GASKET KIT (Option)

Fig.2 IGNITION SYSTEM, STARTER

G5000

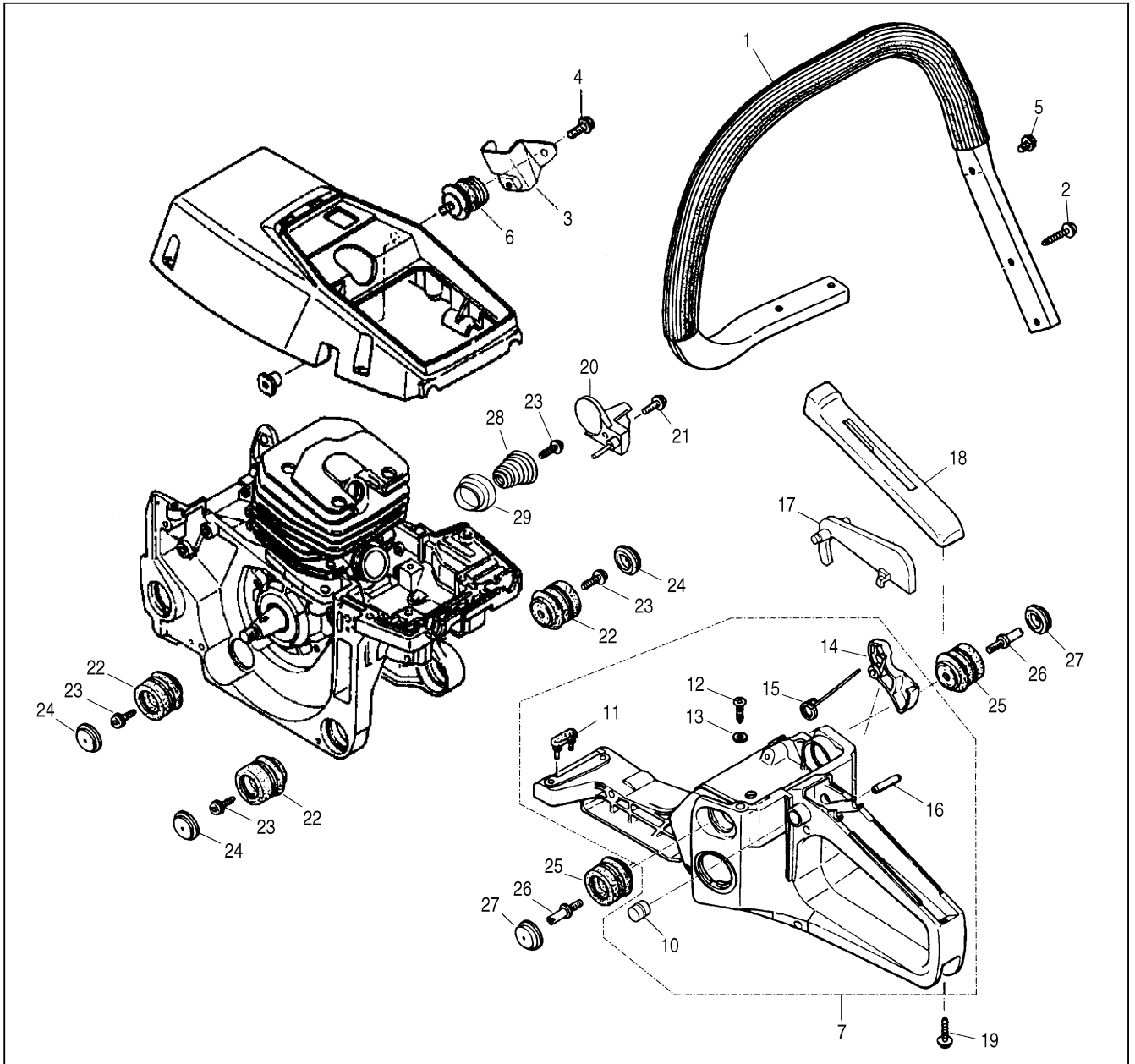


| Key# | PART NUMBER | DESCRIPTION | Q'TY /UNIT | NOTE | Key# | PART NUMBER | DESCRIPTION | Q'TY /UNIT | NOTE |
|------|-------------|--------------|------------|------|------|-------------|----------------|------------|--------|
| 1 | 2670-71101 | ROTOR ASSY | 1 | | 24 | 2670-14130 | SCREW | 1 | |
| 2 | 1850-75220 | • RATCHET | 2 | | 25 | 3699-90332 | SPARK PLUG NGK | 1 | BPMR7A |
| 3 | 2670-71130 | • SPRING | 2 | | 26 | 2880-75003 | STARTER ASSY | 1 | |
| 4 | 0308-00040 | • RING | 2 | | 27 | 2810-75110 | • CASE | 1 | |
| 5 | 3350-43231 | NUT | 1 | | 28 | 2810-75120 | • GUIDE | 1 | |
| 6 | 0290-20820 | WASHER | 1 | | 29 | 2670-75212 | • REEL | 1 | |
| 7 | 2880-71300 | COIL ASSY | 1 | | 30 | 3317-75300 | • SPRING COMP. | 1 | |
| 8 | 2810-71204 | • COIL COMP. | 1 | | 31 | 2670-75411 | • ROPE | 1 | |
| 9 | 2810-71220 | •• CORD | 1 | | 32 | 1400-75170 | • KNOB | 1 | |
| 10 | 2670-71230 | •• GROMMET | 1 | | 33 | 3310-75431 | • WASHER | 1 | |
| 11 | 2810-72110 | • CAP | 1 | | 34 | 1400-86280 | • WASHER | 1 | |
| 12 | 1400-72121 | • SPRING | 1 | | 35 | 2670-14220 | • SCREW | 1 | |
| 13 | 2670-71320 | • TUBE | 1 | | 36 | 2810-75150 | • BOSS | 1 | |
| 15 | 2810-71250 | • GROMMET | 1 | | 37 | 2880-75600 | COVER | 1 | |
| 16 | 2670-14220 | SCREW | 2 | | 38 | 2880-75620 | • SEAT | 1 | |
| 17 | 2810-21270 | PLATE | 1 | | 39 | 2670-14320 | SCREW | 4 | |
| 18 | 0260-30410 | SCREW | 2 | | 40 | 848C8N90C0 | LABEL | 1 | |
| 19 | 2670-71510 | CORD | 1 | | | | | | |
| 20 | 2880-71600 | SWITCH ASSY | 1 | | | | | | |
| 21 | 2810-71610 | • SWITCH | 1 | | | | | | |
| 22 | 2670-71621 | • COVER | 1 | | | | | | |
| 23 | 2880-71630 | • PLATE | 1 | | | | | | |

Fig.3 HANDLES

AUTO RETURN
CHOKE

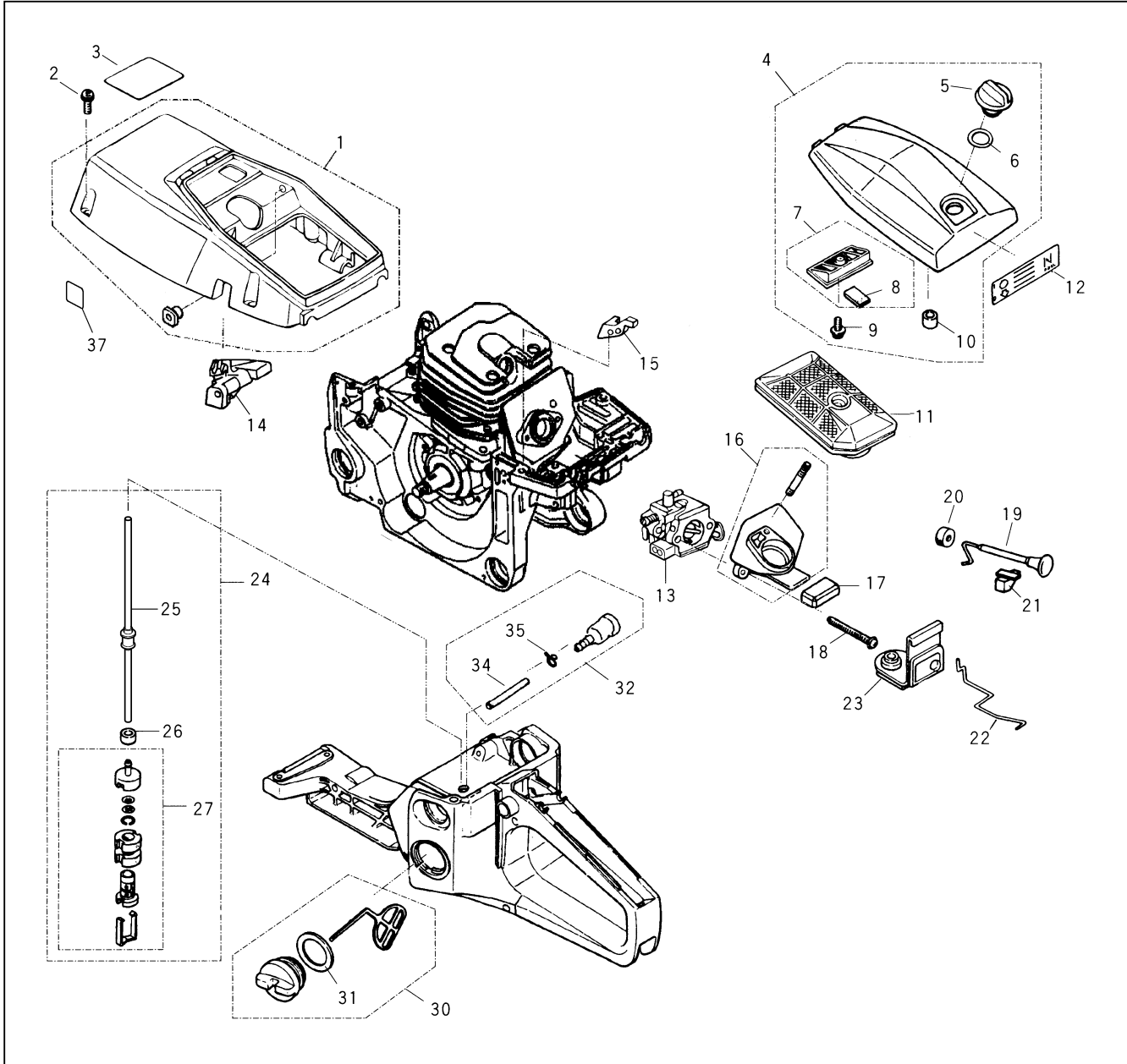
G5000



| Key# | PART NUMBER | DESCRIPTION | Q'TY /UNIT | NOTE | Key# | PART NUMBER | DESCRIPTION | Q'TY /UNIT | NOTE |
|------|-------------|-------------------|------------|------|------|-------------|-------------|------------|------|
| 1 | 2880-32101 | LEFT HANDLE COMP. | 1 | | 25 | 2880-35211 | DAMPER | 2 | |
| 2 | 8488251901 | SCREW | 4 | | 26 | 3350-35170 | BOLT | 2 | |
| 3 | 2880-32250 | BRACKET | 1 | | 27 | 2880-35250 | CAP | 2 | |
| 4 | 2670-14130 | SCREW | 1 | | 28 | 2881-35110 | SPRING | 1 | |
| 5 | 2880-32270 | SCREW | 1 | | 29 | 2881-35120 | SPACER | 1 | |
| 6 | 2880-31211 | DAMPER | 1 | | | | | | |
| 7 | 848C863300 | HANDLE ASSY | 1 | | | | | | |
| 10 | 848C8033Y0 | • PLUG | 1 | | | | | | |
| 11 | 2810-33280 | • DAMPER (A) | 1 | | | | | | |
| 12 | 2670-75520 | • SCREW | 1 | | | | | | |
| 13 | 2810-33211 | • GASKET | 1 | | | | | | |
| 14 | 2670-33311 | • LEVER | 1 | | | | | | |
| 15 | 3356-33321 | • SPRING | 1 | | | | | | |
| 16 | 04025-00524 | • SPRING PIN | 1 | | | | | | |
| 17 | 848C3033E3 | ARM | 1 | | | | | | |
| 18 | 2670-34110 | COVER | 1 | | | | | | |
| 19 | 8488251901 | SCREW | 1 | | | | | | |
| 20 | 2810-25210 | CHAIN CATCHER | 1 | | | | | | |
| 21 | 2670-14320 | SCREW | 1 | | | | | | |
| 22 | 2880-35111 | DAMPER | 3 | | | | | | |
| 23 | 8488251601 | SCREW | 4 | | | | | | |
| 24 | 2810-35150 | CAP | 3 | | | | | | |

Fig.4 FUEL SUPPLY SYSTEM

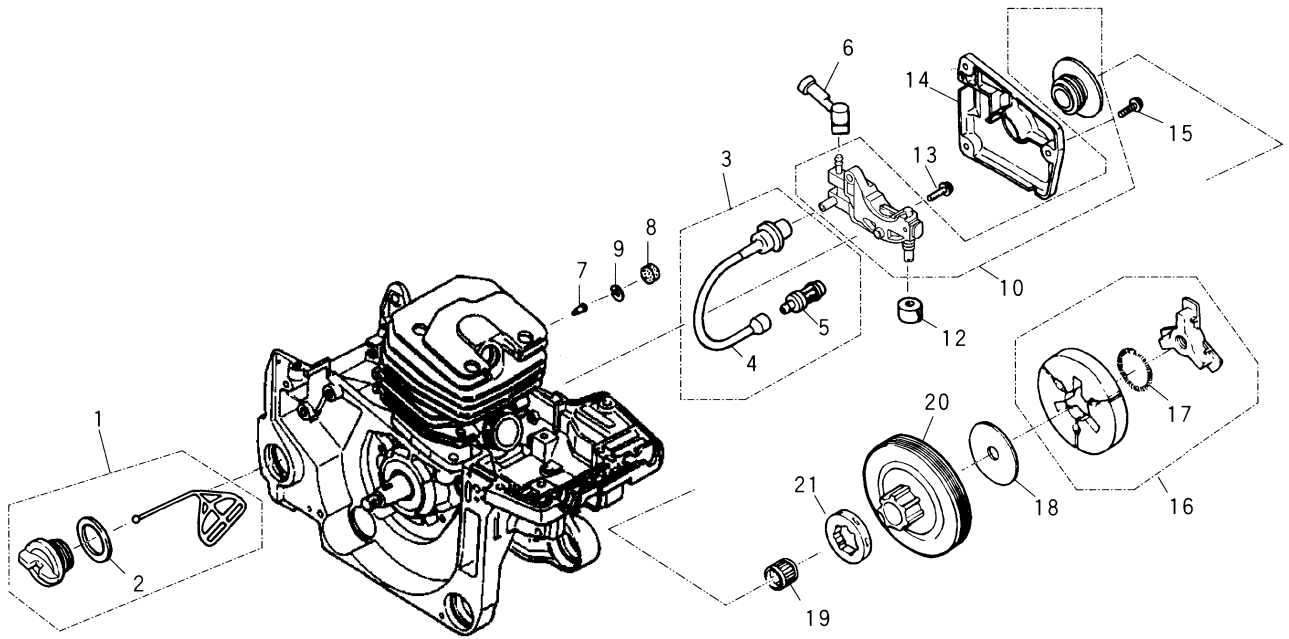
G5000



| Key# | PART NUMBER | DESCRIPTION | Q'TY /UNIT | NOTE | Key# | PART NUMBER | DESCRIPTION | Q'TY /UNIT | NOTE |
|------|-------------|----------------------|------------|-------|------|-------------|----------------|------------|-------|
| 1 | 848C8A3122 | CYLINDER COVER COMP. | 1 | | 24 | 848C808538 | FUEL PIPE ASSY | 1 | |
| 2 | 2670-14320 | SCREW | 5 | | 25 | 848C808590 | • PIPE | 1 | |
| 3 | 848C8N90F0 | LABEL | 1 | | 26 | 2850-34350 | • COLLAR | 1 | |
| 4 | 2810-83305 | CLEANER COVER COMP. | 1 | | 27 | 3302-85400 | • FILTER ASSY | 1 | |
| 5 | 3356-83322 | • KNOB | 1 | | 30 | 2670-34401 | TANK CAP ASSY | 1 | |
| 6 | 3388-83340 | • GASKET | 1 | | 31 | 2670-34430 | • GASKET | 1 | |
| 7 | 2810-83500 | • CLEANER COMP. | 1 | | 32 | 2670-34500 | BREATHER ASSY | 1 | |
| 8 | 2810-83520 | •• SEAL | 1 | | 34 | 3350-34540 | • PIPE | 1 | |
| 9 | 1600-33130 | • SCREW | 1 | | 35 | 1260-85460 | • CLIP | 1 | |
| 10 | 2810-83410 | • GROMMET | 1 | | 37 | T2990-21120 | LABEL | 1 | 112db |
| 11 | 2810-83101 | CLEANER COMP. | 1 | | | | | | |
| 12 | 2813-31210 | LABEL | 1 | | | | | | |
| 13 | 848C8E8103 | CARBURETOR ASSY | 1 | Fig.6 | | | | | |
| 14 | 2880-82310 | GUIDE (L) | 1 | | | | | | |
| 15 | 2880-82350 | GUIDE (HL) | 1 | | | | | | |
| 16 | 2880-82102 | MANIFOLD COMP. | 1 | | | | | | |
| 17 | 2810-82141 | SUPPORTER | 1 | | | | | | |
| 18 | 2880-82210 | SCREW | 2 | | | | | | |
| 19 | 2880-82410 | CHOKE ROD | 1 | | | | | | |
| 20 | 848C8082G0 | GROMMET | 1 | | | | | | |
| 21 | 2670-82430 | GUIDE | 1 | | | | | | |
| 22 | 2880-82511 | THROTTLE ROD | 1 | | | | | | |
| 23 | 2810-82520 | GROMMET | 1 | | | | | | |

Fig.5 OIL FEED SYSTEM, CLUTCH

G5000

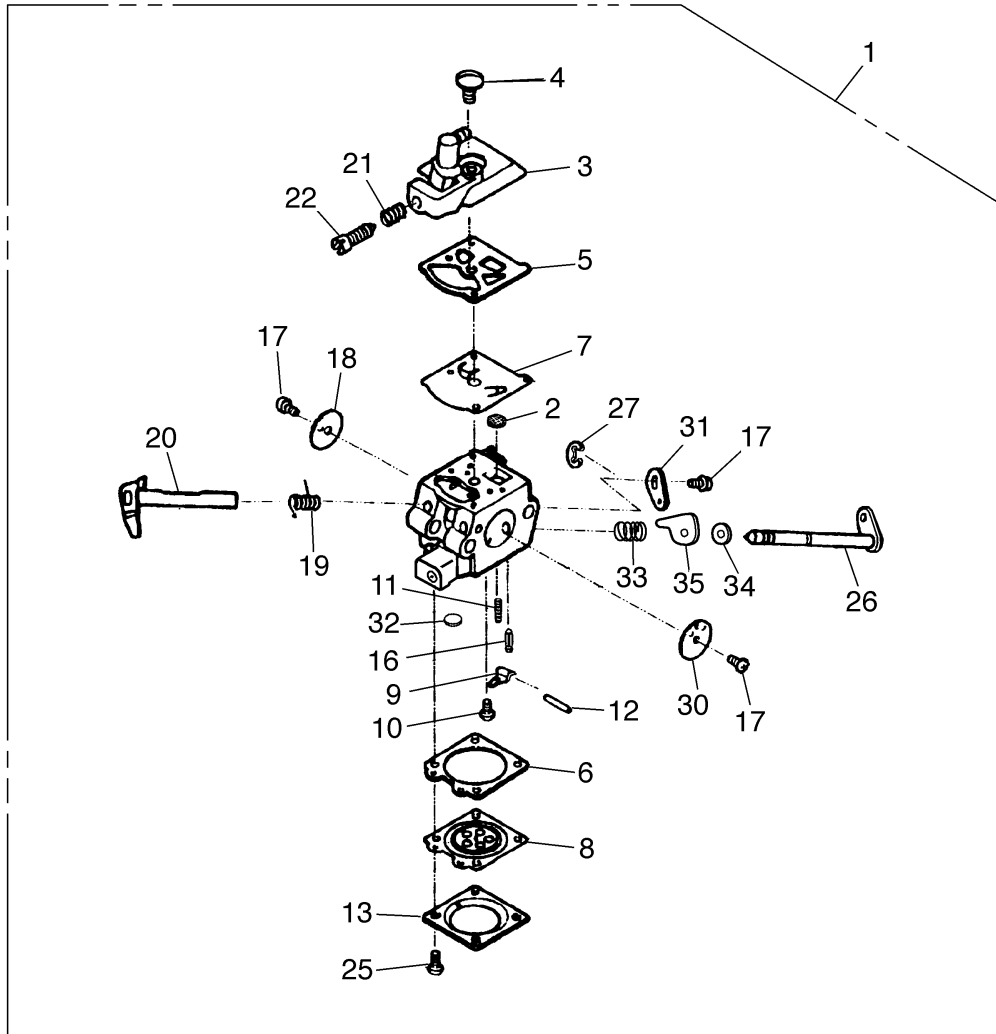


| Key# | PART NUMBER | DESCRIPTION | Q'TY /UNIT | NOTE | Key# | PART NUMBER | DESCRIPTION | Q'TY /UNIT | NOTE |
|------|-------------|---------------|------------|------|------|-------------|-------------|------------|------|
| 1 | 848C108512 | CAP ASSY | 1 | | | | | | |
| 2 | 2841-31820 | • GASKET | 1 | | | | | | |
| 3 | 848C806732 | OIL PIPE ASSY | 1 | | | | | | |
| 4 | 2670-23120 | • PIPE | 1 | | | | | | |
| 5 | 848C806742 | • FILTER | 1 | | | | | | |
| 6 | 2670-23210 | PIPE | 1 | | | | | | |
| 7 | 3330-23121 | VALVE | 1 | | | | | | |
| 8 | 3350-26220 | SEAL | 1 | | | | | | |
| 9 | 3350-26230 | CLIP | 1 | | | | | | |
| 10 | 848CA60640 | OIL PUMP SET | 1 | | | | | | |
| | | • GEAR | 1 | | | | | | |
| 12 | 2670-55220 | SEAL | 1 | | | | | | |
| 13 | 2670-55410 | SCREW | 2 | | | | | | |
| 14 | 2670-55610 | COVER | 1 | | | | | | |
| 15 | 2670-55410 | SCREW | 3 | | | | | | |
| 16 | 848C805121 | CLUTCH ASSY | 1 | | | | | | |
| 17 | 3317-51231 | • SPRING | 1 | | | | | | |
| 18 | 2670-51210 | PLATE | 1 | | | | | | |
| 19 | 2810-51310 | BEARING | 1 | | | | | | |
| 20 | 2880-51110 | DRUM | 1 | | | | | | |
| 21 | 3350-51121 | RIM | 1 | | | | | | |

Fig.6 CARBURETOR

**AUTO RETURN
CHOKE**

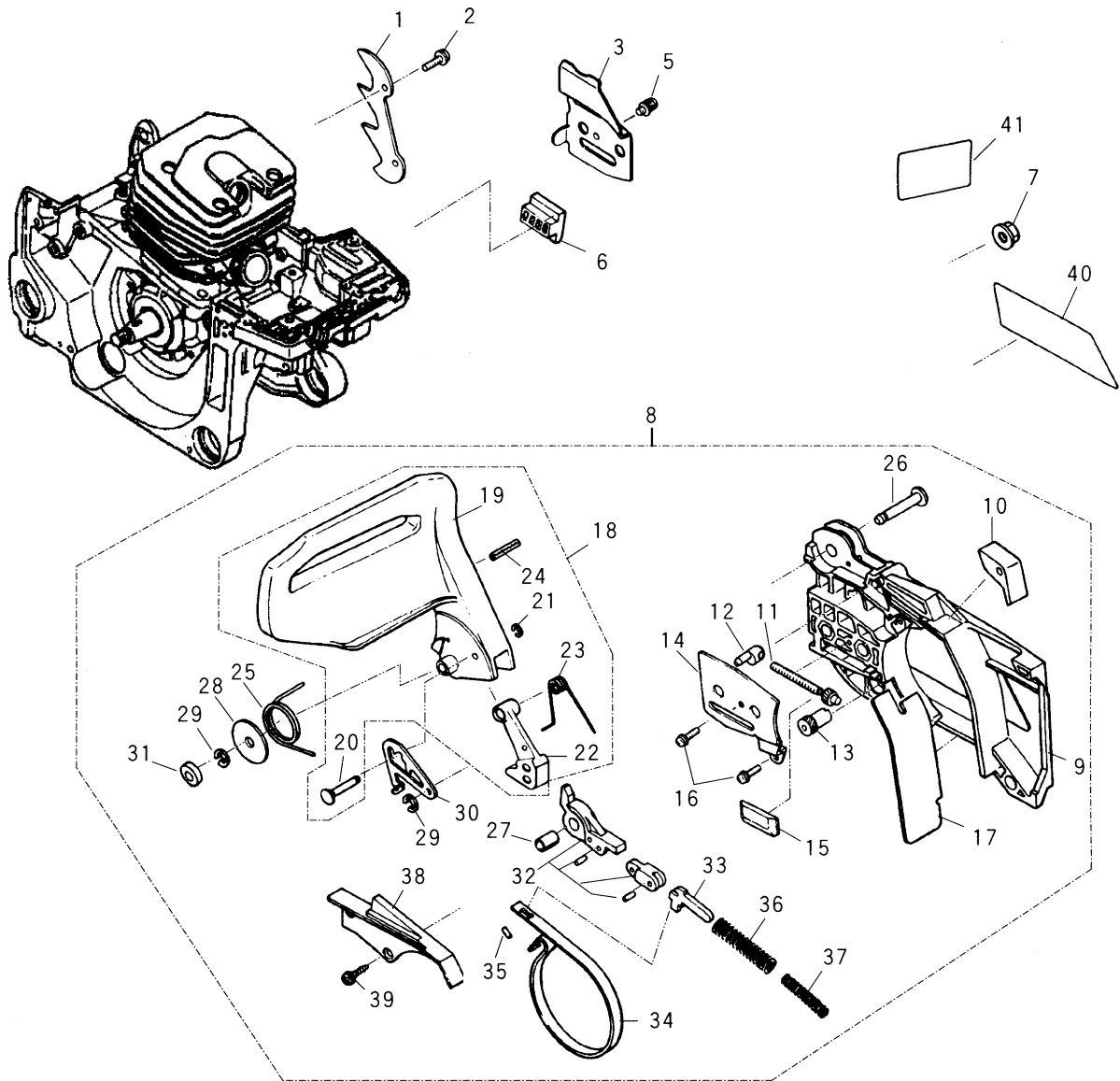
G5000



| Key# | PART NUMBER | DESCRIPTION | Q'TY /UNIT | NOTE | Key# | PART NUMBER | DESCRIPTION | Q'TY /UNIT | NOTE |
|------|-------------|----------------------------|------------|--------|------|-------------|------------------|------------|------|
| 1 | 848C8E8103 | CARBURETOR ASSY | 1 | WT-755 | 26 | 848C8A80E1 | • CHOKE SHAFT | 1 | |
| 2 | 3306-81380 | • SCREEN | 1 | | 27 | 1148-81390 | • RING | 1 | |
| 3 | 2810-81120 | • PUMP COVER | 1 | | | | | | |
| 4 | 3310-81130 | • SCREW | 1 | | 30 | 2670-81450 | • CHOKE VALVE | 1 | |
| 5 | 3304-81140 | • GASKET, PUMP | 1 | | 31 | 848C8081Z1 | • THROTTLE LEVER | 1 | |
| 6 | 2850-81290 | • GASKET, M.D. | 1 | | 32 | 1480-81420 | • PLUG | 1 | |
| 7 | 1172-81150 | • DIAPHRAGM, PUMP | 1 | | 33 | 848C8080D0 | • SPRING | 1 | |
| 8 | 3310-81260 | • DIAPHRAGM ASSY, METERING | 1 | | 34 | 1751-81190 | • WASHER | 1 | |
| 9 | 3310-81230 | • LEVER | 1 | | 35 | 848C8089D0 | • LEVER | 1 | |
| 10 | 3310-81240 | • SCREW M LEVER PIN | 1 | | | | | | |
| 11 | 2841-81270 | • SPRING | 1 | | | | | | |
| 12 | 3310-81250 | • PIN, lever | 1 | | | | | | |
| 13 | 3310-81280 | • COVER | 1 | | | | | | |
| 16 | 3356-81310 | • VALVE, inlet | 1 | | | | | | |
| 17 | 2880-81470 | • SCREW, valve | 3 | | | | | | |
| 18 | 3356-81340 | • THROTTLE valve | 1 | | | | | | |
| 19 | 2670-81410 | • THROTTLE SPRING | 1 | | | | | | |
| 20 | T2108-81370 | • THROTTLE SHAFT | 1 | | | | | | |
| 21 | 2630-81460 | • IDLE SPRING | 1 | | | | | | |
| 22 | 2670-81430 | • IDLE SCREW | 1 | | | | | | |
| 25 | 3310-81351 | • SCREW | 4 | | | | | | |

Fig.7 BAR MOUNT, CHAIN BRAKE

G5000



| Key# | PART NUMBER | DESCRIPTION | Q'TY /UNIT | NOTE | Key# | PART NUMBER | DESCRIPTION | Q'TY /UNIT | NOTE |
|------|-------------|------------------|------------|------|------|-------------|---------------------|------------|------|
| 1 | 2670-25310 | BUMPER | 1 | | 24 | 2880-54150 | •• PIN | 1 | |
| 2 | 2670-14320 | SCREW | 2 | | 25 | 2670-54210 | • SPRING | 1 | |
| 3 | 2810-25421 | PLATE | 1 | | 26 | 2670-54220 | • PIN | 1 | |
| 5 | 2670-25430 | SCREW | 1 | | 27 | 2670-54231 | • SPACER | 1 | |
| 6 | 2670-25410 | GUIDE | 1 | | 28 | 3238-15230 | • WASHER | 1 | |
| 7 | 3350-53410 | NUT | 2 | | 29 | 0308-00040 | • RING | 2 | |
| 8 | 848C8E5405 | CHAIN COVER ASSY | 1 | | 30 | 2810-54240 | • PLATE | 1 | |
| 9 | 848C8053A5 | • COVER | 1 | | 31 | 2810-54260 | • SPACER | 1 | |
| 10 | 2880-53150 | • STOPPER | 1 | | 32 | 2670-54302 | • BRAKE LEVER COMP. | 1 | |
| 11 | 2671-53210 | • SCREW | 1 | | 33 | 2670-54411 | • ARM | 1 | |
| 12 | 2810-53221 | • NUT | 1 | | 34 | 2670-54510 | • BAND | 1 | |
| 13 | 2671-53230 | • GEAR | 1 | | 35 | 3356-24140 | • ROLLER | 1 | |
| 14 | 2671-53240 | • PLATE | 1 | | 36 | 2670-54610 | • SPRING | 1 | |
| 15 | 2670-25410 | • GUIDE | 1 | | 37 | 2880-54650 | • SPRING | 1 | |
| 16 | 2670-54630 | • SCREW | 2 | | 38 | 2670-54621 | • COVER | 1 | |
| 17 | 2671-53311 | • PROTECTOR | 1 | | 39 | 2670-54630 | • SCREW | 3 | |
| 18 | 848C8E5413 | • GUARD COMP. | 1 | | 40 | 848C8H90B1 | LABEL | 1 | |
| 19 | 2880-54112 | •• GUARD | 1 | | 41 | 2874-54990 | LABEL | 1 | |
| 20 | 2670-54121 | •• PIN | 1 | | | | | | |
| 21 | 0308-00030 | •• RING | 1 | | | | | | |
| 22 | 2880-54130 | •• WEIGHT | 1 | | | | | | |
| 23 | 848C8E54D1 | •• SPRING | 1 | | | | | | |

