



PARTS LIST

CHAINSAW

GZ3500T

NOTE :

1. Use ZENOAH genuine parts as specified in the parts list for repair and/or replacement.
2. ZENOAH does not warrant the machines, which have been damaged by the use of any parts other than those specified by the company.
3. When placing parts orders for repair and/or replacement, check if the model name and the serial number are applicable to those specified in the parts list, then use parts number described in the parts list.
4. The contents described in the parts list are accurate as of the date and may change due to improvement.
5. The parts for the machine shall be supplied ten (10) years after the machine is discontinued. [It is possible that some specific parts may be subject to change of their delivery term and list price within the limit of ten (10) years after the machine is discontinued. It is also possible that some parts may be available even after the limit of ten (10) years.]

APPLICABLE SERIAL NUMBERS:

800001 and up

July 2008

GZ3500T

Fig.1 POWER UNIT

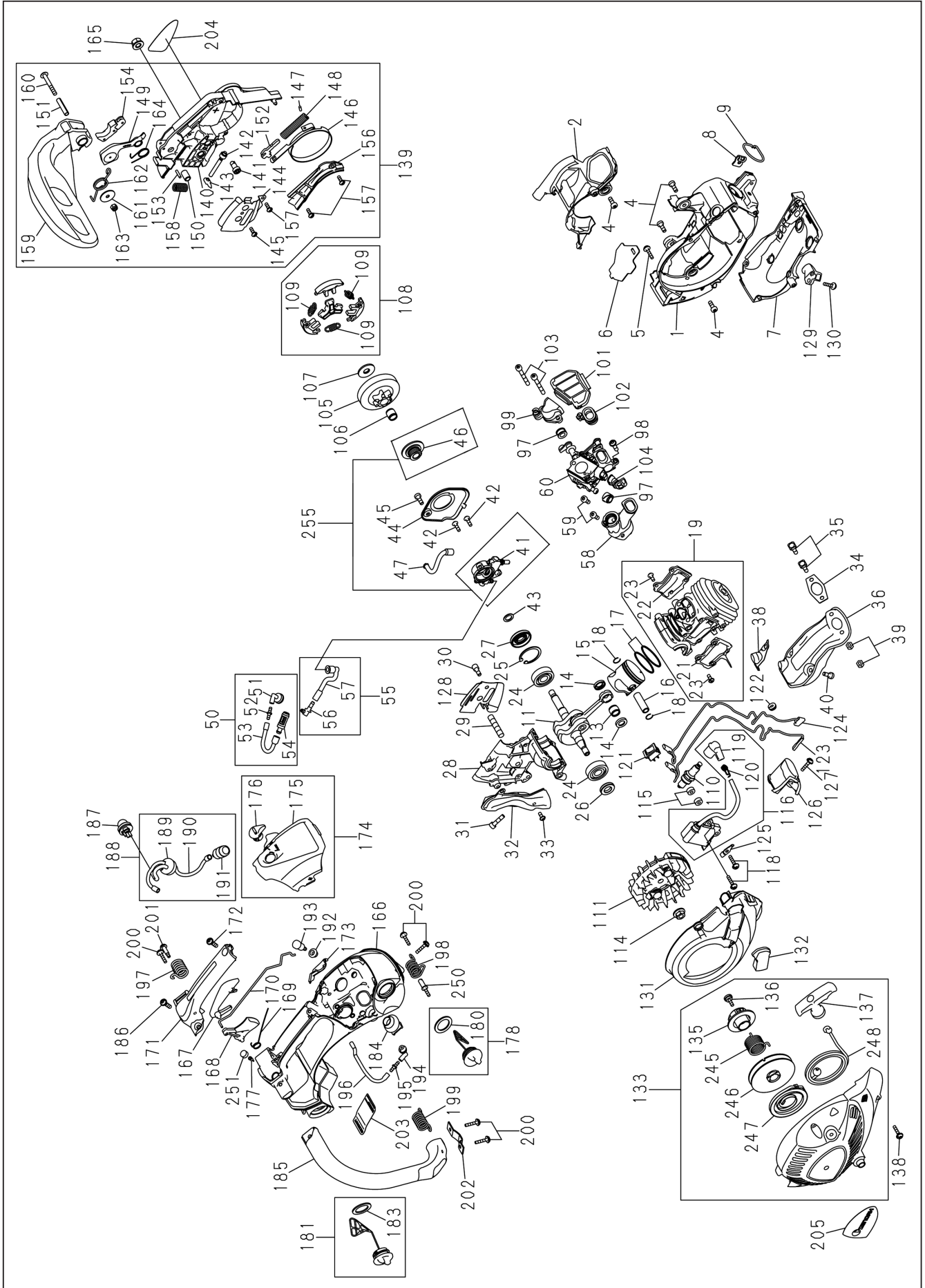


Fig.1 POWER UNIT

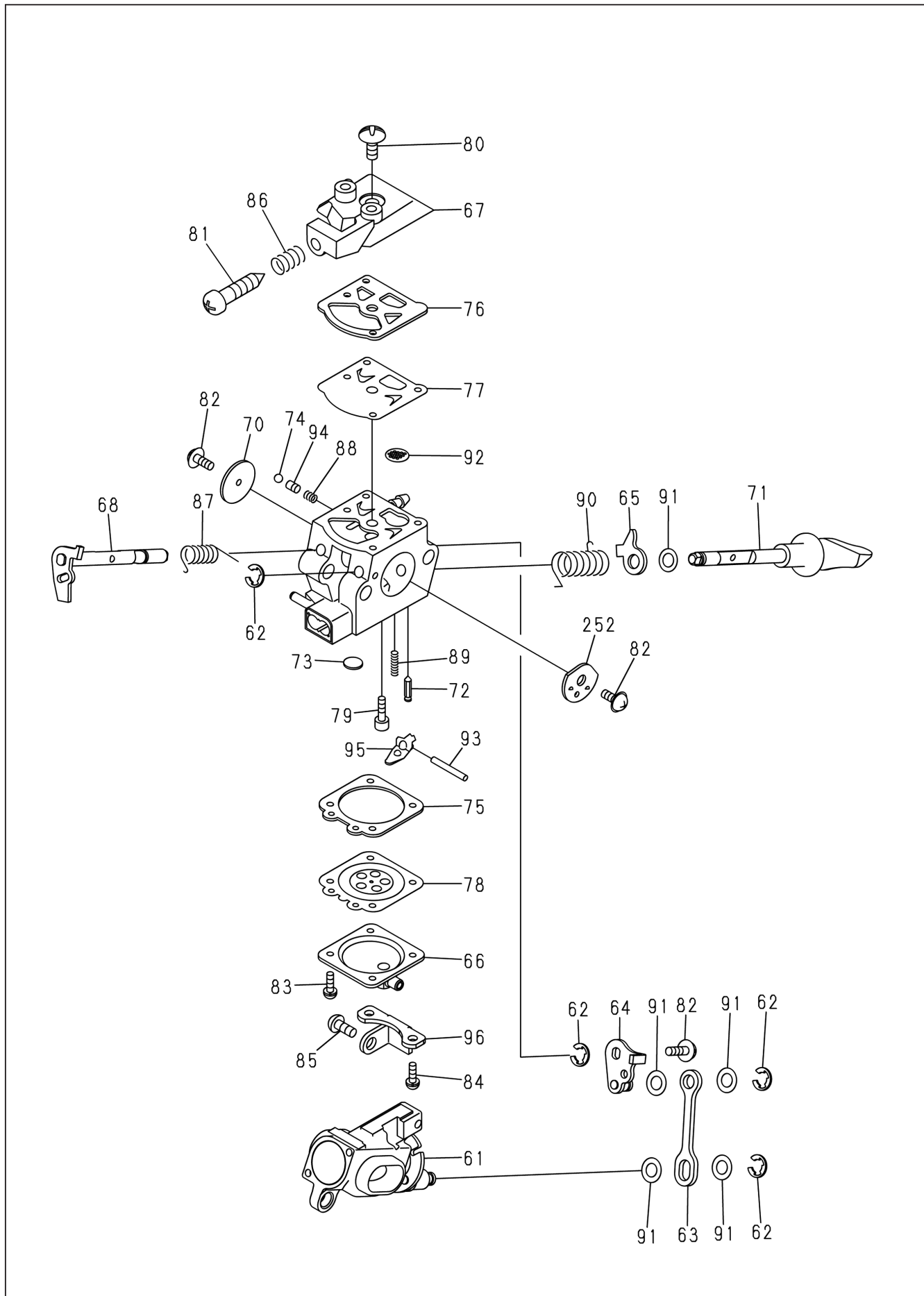
Key#	PART NUMBER	DESCRIPTION	Q'TY /UNIT	NOTE	Key#	PART NUMBER	DESCRIPTION	Q'TY /UNIT	NOTE
1	848CE031A3	CASE,EG	1		46		• WORM	1	
2	848CE031D3	COVER, TOP	1		47	T2100-21400	PIPE OUT COMP	1	
4	8488151400	SCREW	4		50	848CE06741	FILTER COMP	1	
5	8488251901	SCREW	1		51	848CE067U2	• PIPE,OIL FILTER	1	
6	848CE031C0	GASKET	1		52	2841-37150	• JOINT	1	
7	848CE031E2	GUARD, UNDER	1		53	8488G20780	• PIPE	1	
8	848CE033W0	PLATE, HOOK	1		54	848C806742	• FILTER	1	
9	848CE033U1	HOOK	1		55	848CE06730	PIPE IN COMP	1	
11	848CE04201	SHAFT, COMP	1		56	3350-34320	• ELBOW	1	
13	T2100-41410	BEARING	1		57	848CE067J1	• PIPE,OIL IN	1	
14	2850-41510	WASHER	2		58	848CE014A3	PIPE, INLET	1	
15	848CE041A1	PISTON	1		59	8488151220	BOLT	2	
16	8488BA3300	PIN	1		60	848CE08102	CARBURETOR ASSY	1	
17	848CE041D0	RING, PISTON	2		97	2670-55220	SEAL	2	
18	1300-41320	RING	2		98	8488251911	SCREW	1	
19	848CE01212	CYLINDER ASSY	1		99	848CE083A2	MANIFOLD	1	
21	848CE012C1	• TR, COVER MAG	1		101	848CE083B1	CLEANER	1	
22	848CE012D2	• TR, COVER PTO	1		102	848CE083G2	SEAL	1	
23	2670-25430	• SCREW	8		103	8488154500	BOLT	2	
24	84889C3230	BEARING	2		104	848CE082C2	GUIDE, CAB	1	
25	04065-03212	RING	1		105	T2220-51110	DRUM, 3/8	1	
26	8488AC2210	SEAL	1		106	3310-51310	BEARING	1	
27	8488AC3230	SEAL	1		107	T2041-51210	PLATE	1	
28	848CE021A3	CASE, CRANK	1		108	848C305122	CLUTCH	1	
29	2616-21230	STUD	1		109	848C3051E2	• SPRING	3	
30	T2200-21230	BOLT	1		110	3699-91867	SPARKPLUG, CMR7H	1	
31	4820-13180	BOLT	4		111	848CE07111	ROTOR ASSY	1	
32	848CE015E3	PIPE, EXHAUST	1		114	1650-43230	NUT	1	
33	2670-25430	SCREW	1		115	5500-72150	SPACER	2	
34	T2100-15210	GASKET	1		118	8488142000	BOLT TORX 09	2	
35	8488451800	BOLT	2		116	848CE07132	COIL COMP	1	
36	848CE015A2	MUFFLER	1		119	T2070-72210	• CAP	1	
38	848CE015D2	GUIDE, MUFFLER	1		120	848F6L71G0	• SPRING	1	
39	2850-15230	NUT	2		121	2850-74102	SWITCH	1	
40	8488151400	SCREW	2		122	848CE071F1	GROMMET	1	
42	2670-55410	SCREW	2		123	848CE072B1	CORD, SWITCH	1	
43	848870A000	WASHER	1		124	848CE072C1	CORD, EARTH	1	
44	848CE067C0	COVER, PUMP	1		125	848CE071W0	TERMINAL	1	
45	8488151400	SCREW	1		126	848CE031F3	COVER, PLUG	1	
255	848CA00640	OIL PUMP SET	1		127	8488251911	SCREW	1	
41		• OIL PUMP	1		128	848CE066E0	PLATE	1	
					129	848CE066F1	CATCHER	1	

GZ3500T

Fig.1 POWER UNIT

Key#	PART NUMBER	DESCRIPTION	Q'TY /UNIT	NOTE	Key#	PART NUMBER	DESCRIPTION	Q'TY /UNIT	NOTE
130	8488251901	SCREW	1		169	3356-33321	SPRING	1	
131	848CE074A2	COVER,FAN	1		170	848CE082H1	ROD,TH	1	
132	848CE075T0	GUIDE,DF	1		171	848CE033L2	COVER,GRIP	1	
133	848CE07503	RECOIL,ASSY	1		172	8488251911	SCREW	1	
247	848CE07530	• SPRING_ASSY	1		173	848CE083T1	BRACKET,KNOB	1	
135	848CE075N0	• CAM,PLATE	1		174	848CE08322	COVER COMP	1	
246	848CE075C1	• REEL	1		175	848CE083H3	• COVER,CLEANER	1	
245	848CE075K2	• SPRING	1		176	848CE083J2	• KNOB	1	
136	4500-75150	• SCREW	1		251	2841-31410	SEAL	1	
137	848CE075J0	• KNOB	1		177	2850-21260	VALVE	1	
248	848CE075F0	• ROPE	1		178	848C108512	CAP ASSY	1	
138	8488251911	SCREW	4		180	2841-31820	• GASKET	1	
139	848CE05404	BRAKE ASSY	1		181	848C208511	CAP ASSY	1	
140	848CE053A4	• COVER,CHAIN	1		183	2841-31820	• GASKET	1	
141	2671-53230	• GEAR	1		184	848CE083E1	PIPE,AIR	1	
142	2841-53240	• SCREW	1		185	848CE032A2	L,HANDLE	1	
143	848C3366K0	• NUT	1		186	8488251911	SCREW	1	
144	848CE066C1	• PLATE	1		187	2850-81900	PUMP	1	
145	2670-54630	• SCREW	1		188	848CE08531	PIPE ASSY	1	
146	T2200-54510	• BAND	1		189	848CE085P0	• GROMMET	1	
147	3356-24140	• ROLLER	1		190	8488G12000	• PIPE	1	
148	2670-54610	• SPRING	1		191	1850-85300	• FILTER	1	
149	848C605424	• WEIGHT	1		192	3317-85120	GROMMET	1	
150	2850-54211	• SPACER	1		193	2850-34501	BREATHER	1	
151	2850-54140	• SPACER	1		194	848CE085R0	PIPE	1	
152	2670-54411	• ARM	1		195	2841-37150	JOINT	1	
153	2851-54350	• ROLLER	1		196	8488G11050	PIPE	1	
154	2851-54301	• LEVER C	1		197	848CE037A0	SPRING,FRONT	1	
156	848CE053C2	• COVER,BRAKE	1		198	848CE037C1	SPRING,PTO	1	
157	2670-54630	• SCREW	3		199	848CE037B1	DAMPER,MAG	1	
158	848CE054D0	• SPRING	1		200	8488251911	SCREW	5	
159	848CE054A3	• GUARD	1		201	8488152050	SCREW	1	
160	2850-54130	• SCREW	1		202	848C3037E1	BAND	1	
161	3330-75411	• WASHER	1		250	2841-35120	BOLT	1	
162	2850-54120	• SPRING	1		203	848CE090F0	LABEL,CE	1	
163	3310-53331	• NUT	1		204	848CE090B0	LABEL,COVER	1	
164	2872-54230	• SPRING	1		205	848CE090C0	LABEL,RECOIL	1	
165	3350-53410	NUT	1						
166	848CE03315	HANDLE COMP	1						
167	848C3033E3	ARM	1						
168	848CE033C2	LEVER,TH	1						

Fig.2 CARBURETOR

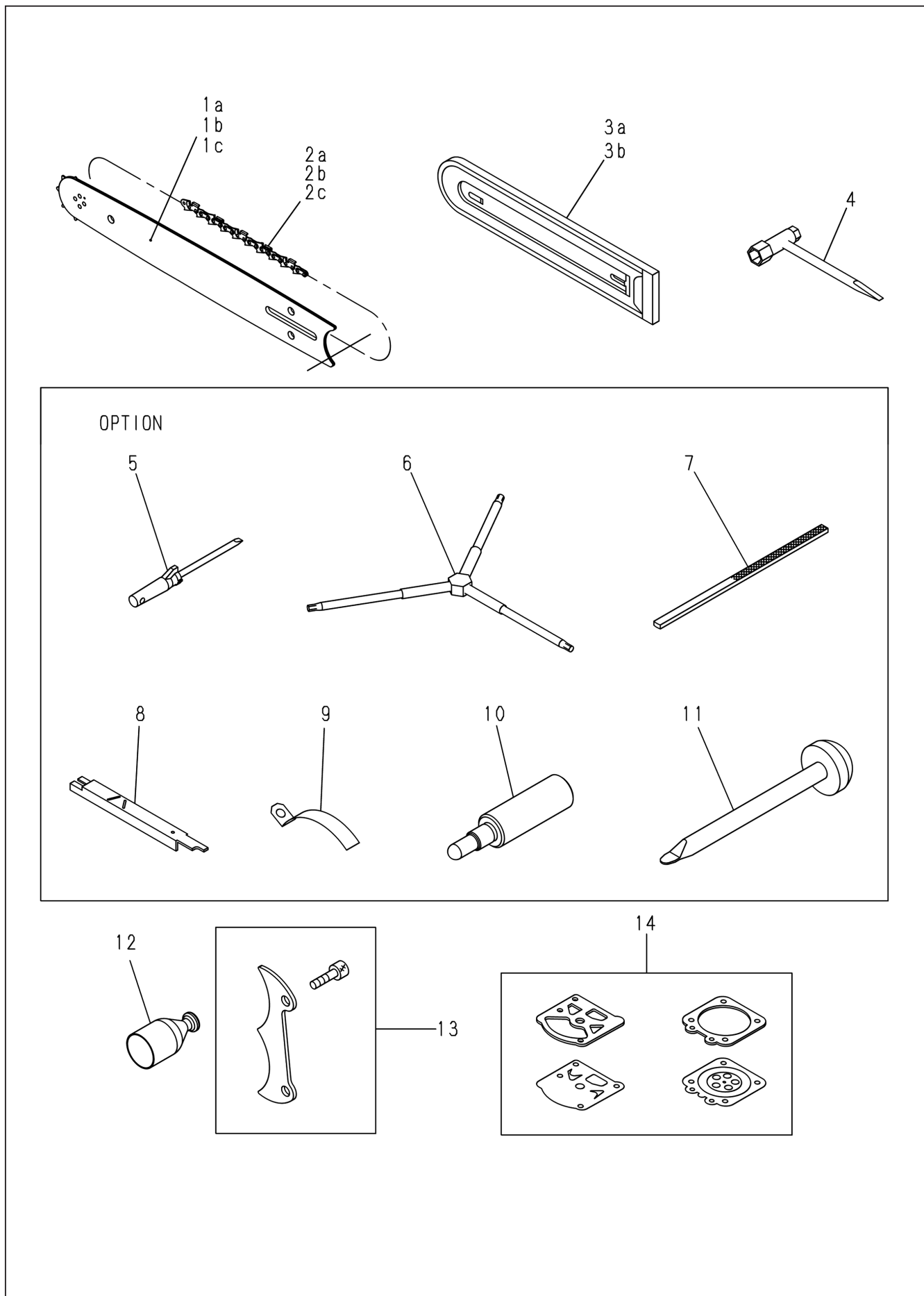


GZ3500T

Fig.2 CARBURETOR

Key#	PART NUMBER	DESCRIPTION	Q'TY /UNIT	NOTE	Key#	PART NUMBER	DESCRIPTION	Q'TY /UNIT	NOTE
60	848CE08102	CARBURETOR ASSY	1						
61	848CE08201	• BODY ASSY AIR V	1						
62	1148-81390	• RING	4						
63	848CE082B1	• ROD, LINK	1						
64	848CE081Z1	• LINK ASSY THROTTLE	1						
65	848C8089D0	• LEVER	1						
66	848CE081G0	• COVER	1						
67	848C5A81H0	• COVER	1						
68	848CE081T1	• SHAFT ASSY THROTTLE	1						
70	3310-81341	• VALVE	1						
71	848CE080E1	• SHAFT ASSY CHOKE	1						
252	2841-81451	• VALVE, CHOKE	1						
72	3356-81310	• VALVE, INLET	1						
73	1480-81420	• PLUG	1						
74	2812-81520	• BALL	1						
75	2850-81290	• GASKET	1						
76	3304-81140	• GASKET	1						
77	3304-81150	• DIAPHRAM 95-89	1						
78	848HE081K0	• DIAPHRAGM	1						
79	3310-81240	• SCREW	1						
80	3310-81130	• SCREW	1						
81	2630-81330	• SCREW	1						
82	2880-81470	• SCREW	3						
83	3310-81351	• SCREW ASSY	2						
84	848CE080B0	• SCREW ASSY	2						
85	848CE081R2	• SCREW	1						
86	3350-81380	• SPRING, IDLE	1						
87	2670-81410	• SPRING	1						
88	2810-81530	• SPRING	1						
89	2867-81270	• SPRING	1						
90	848C8080D0	• SPRING	1						
91	1751-81190	• WASHER	5						
92	3306-81380	• SCREEN	1						
93	3310-81250	• PIN	1						
94	2812-81510	• PISTON	1						
95	3310-81230	• LEVER	1						
96	848CE082K2	• BRACKET	1						

Fig.3 GUIDE BAR, SAW CHAIN, TOOLS



GZ3500T

Fig.3 GUIDE BAR, SAW CHAIN, TOOLS

Key#	PART NUMBER	DESCRIPTION	Q'TY /UNIT	NOTE	Key#	PART NUMBER	DESCRIPTION	Q'TY /UNIT	NOTE
1a	848CB12G20	BAR,12SP	1						
1b	848CB24G30	BAR,14SP	1						
1c	848CB26G10	BAR,16SP	1						
2a	3606-52211-50	CHAIN91VG-J45E	1						
2b	2931-52210-50	CHAIN91VG-J52E	1						
2c	2932-52210-50	CHAIN91VG-J57E	1						
3a	3617-97110	PROTECTOR	1	12", 14"					
3b	3637-97110	PROTECTOR	1	16"					
4	8488U10010	WRENCH	1						
5	2670-91150	DRIVER	1	OPTION					
6	2850-96410	WRENCH	1	OPTION					
7	3317-91210	FILE	1	OPTION					
8	3310-91540	GAUGE	1	OPTION					
9	3330-97310	GAUGE	1	OPTION					
10	4810-96220	STOPPER	1	OPTION					
11	2670-96510	GUIDE	1	OPTION					
12	8488W90100	GUIDE	1						
13	848CE09750	SPIKE, KIT	1						
		• BAMPER	1						
		• BOLT	1						
14	848CE00920	GASKET KIT	1						
		• GASKET	1						
		• DIAPHRAM 95-89	1						
		• GASKET	1						
		• DIAPHRAGM	1						