



PARTS LIST

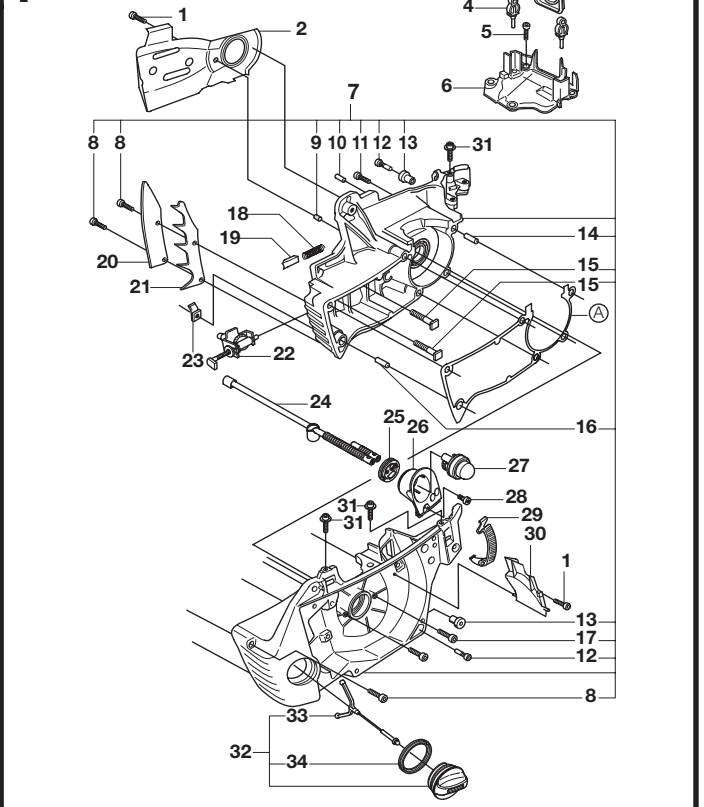
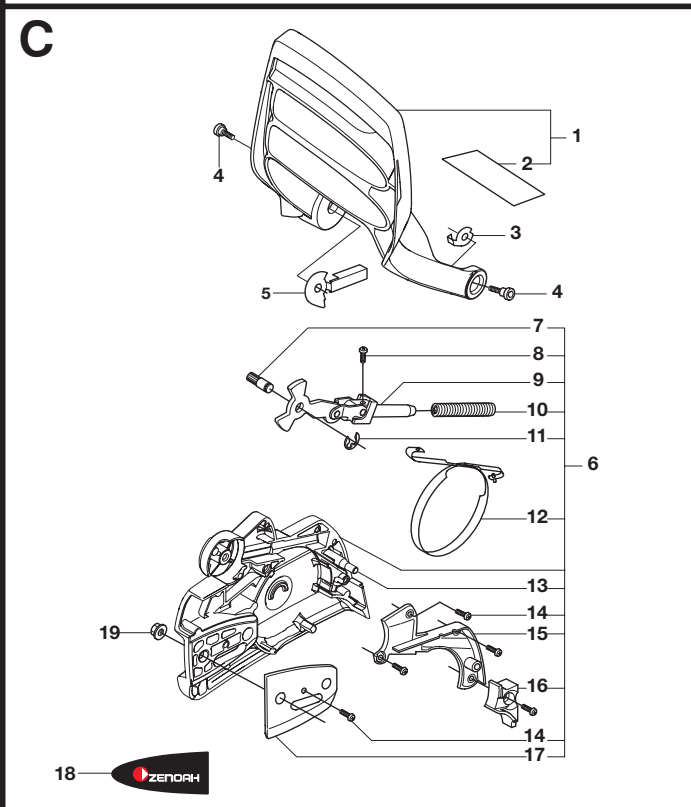
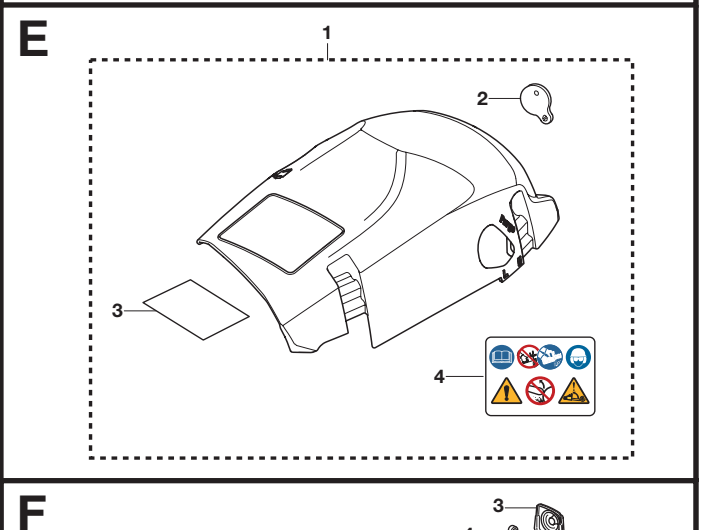
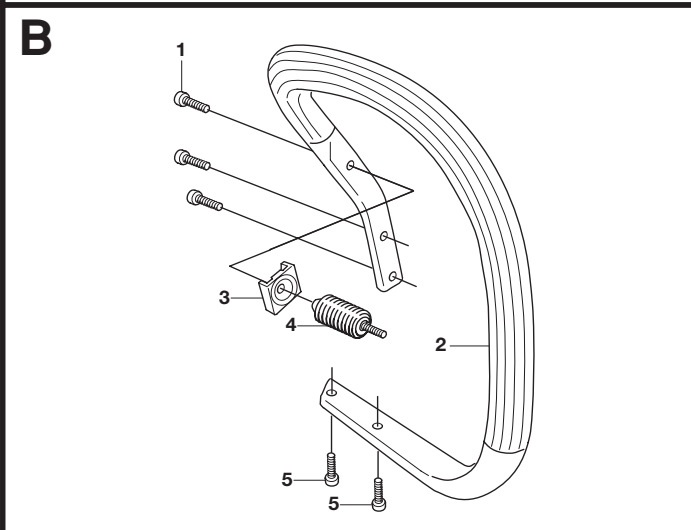
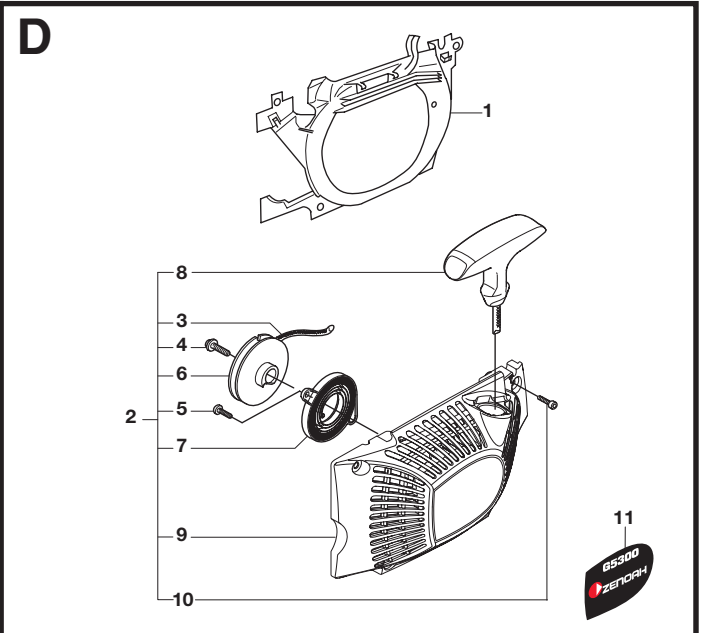
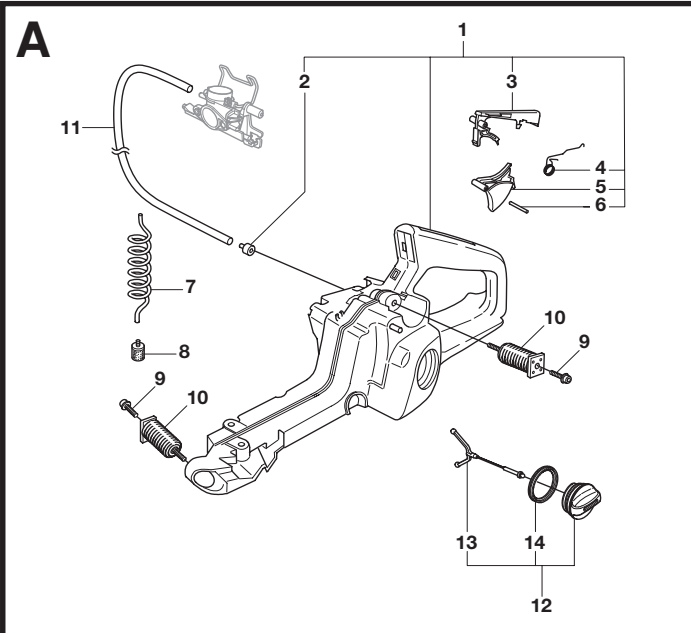
CHAIN SAW

G5300

NOTE :

1. Use ZENOAH genuine parts specified in the parts list for repair and/or replacement.
2. ZENOAH does not warrant the machines, those which have been damaged by the use of any parts other than those specified by the company.
3. When placing orders of parts for repair and/or replacement, check if the model name and the serial number are suitable to those specified in the parts list, then use parts number described in the parts list.
4. The contents described in the parts list may change due to improvement.
5. The parts for the machine shall be supplied within ten (10) years after the machine is discontinued.

[It is possible that some specific parts may be subject to change of their delivery term and list price within the limit of ten (10) years after the machine is discontinued. And it is also possible that some parts may be available even after the limit of ten (10) years.]



A			
Key#	PART NUMBER	DESCRIPTION	QTY/ UNIT
1	503 86 37-05	FUEL TANK ASSY	1
2	537 35 95-01	•TANK VENT ASSY	1
3	503 85 44-02	•THROTTLE LOCKOUT	1
4	503 99 86-01	•RECOIL SPRING	1
5	503 85 45-02	•THROTTLE TRIGGER	1
6	720 18 25-20	•PIN	1
7	544 32 50-02	FUEL HOSE	1
8	503 44 32-01	FILTER	1
9	503 21 88-76	SCREW	2
10	503 85 41-01	ANTIVIBRATION ELEMENT	2
11	544 32 49-20	FUEL HOSE	1
12	537 21 52-01	TANK CAP ASSY	1
13	503 57 89-01	•HOLDER	1
14	537 21 50-01	•SEALING	1

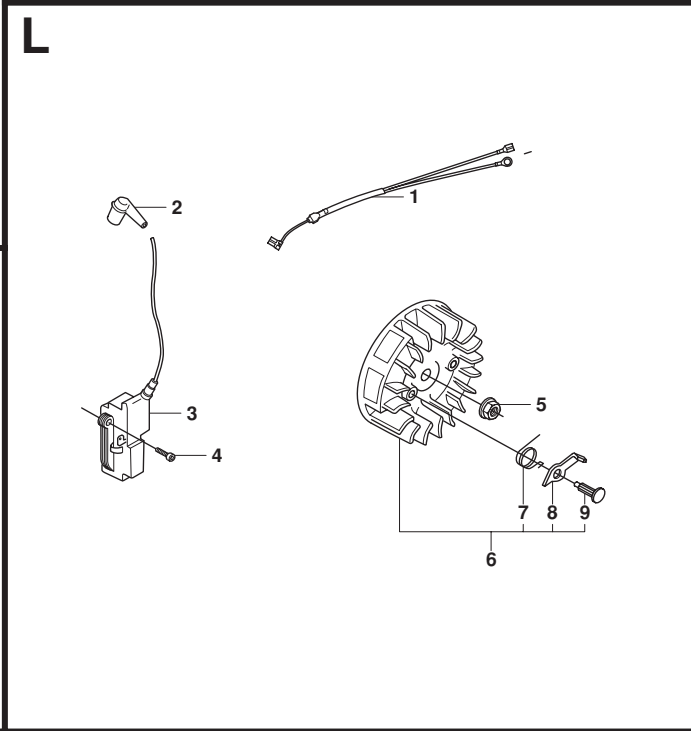
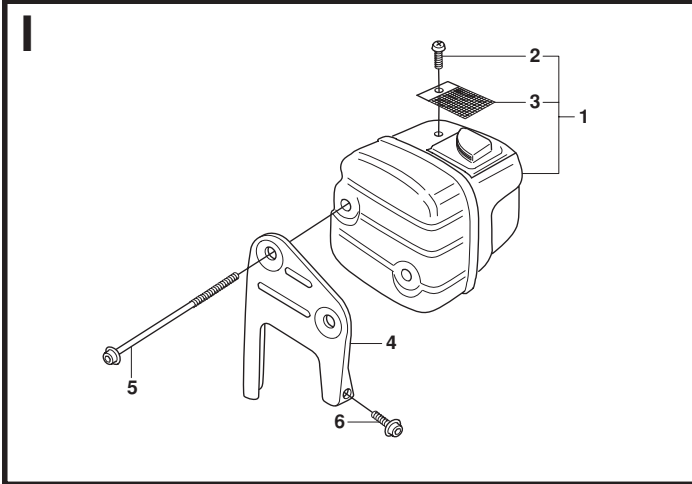
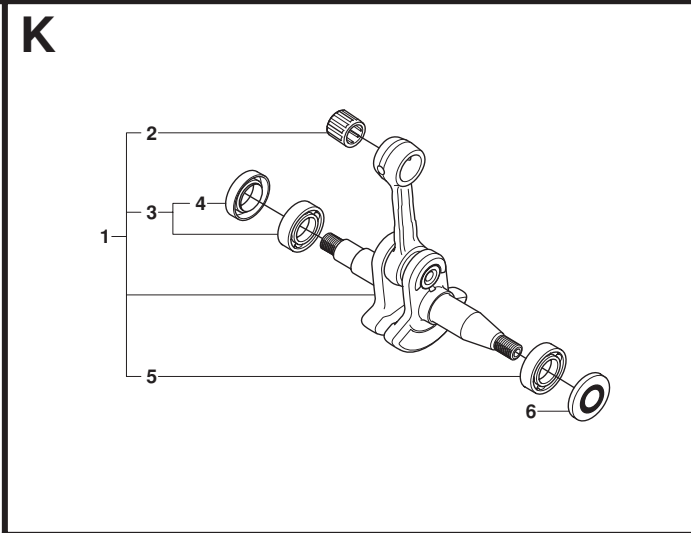
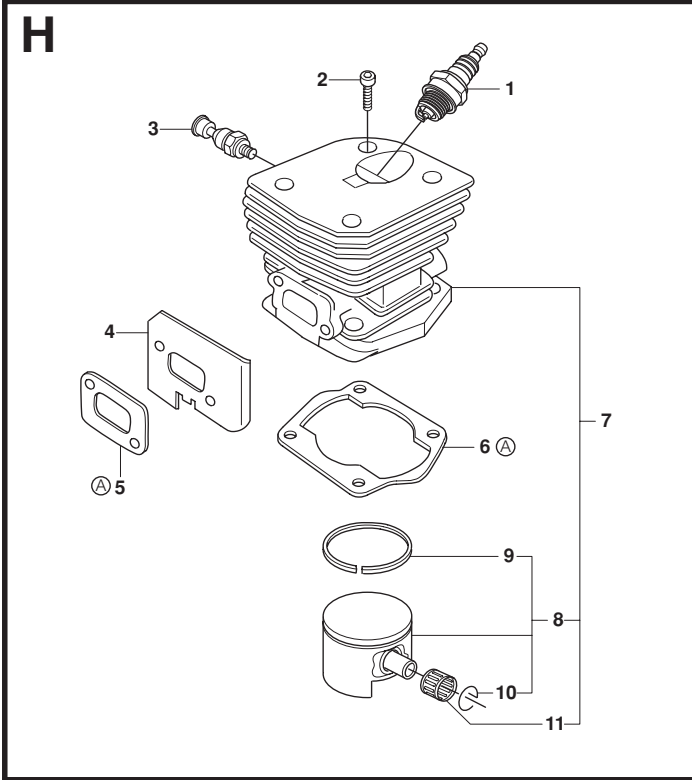
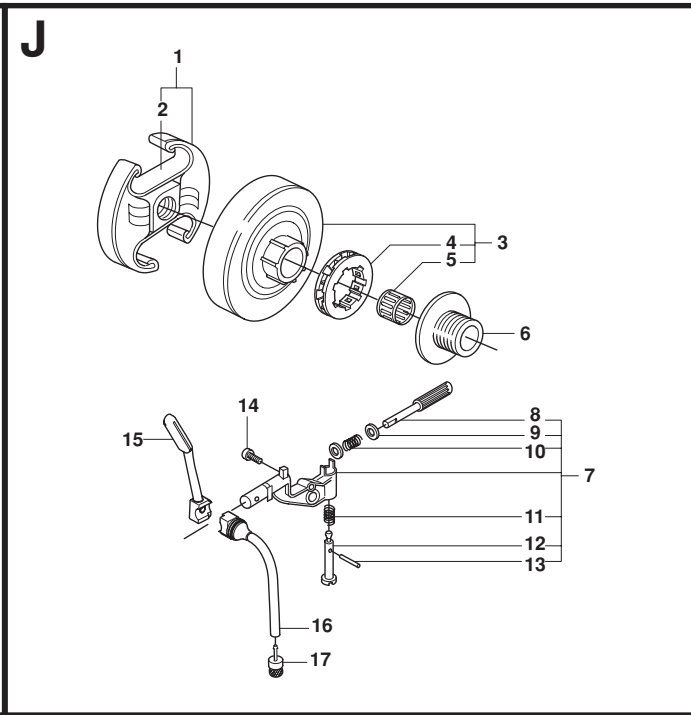
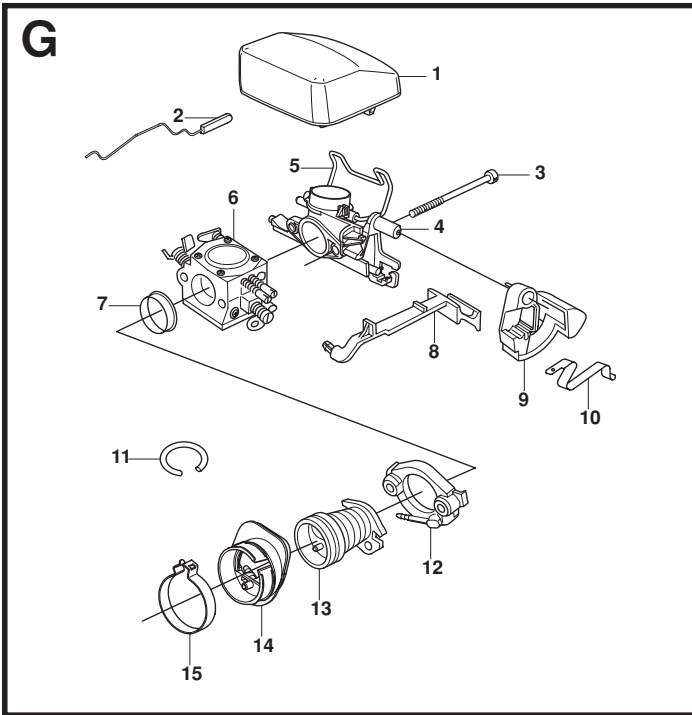
B			
Key#	PART NUMBER	DESCRIPTION	QTY/ UNIT
1	503 21 88-76	SCREW	3
2	537 30 17-03	HANDLE	1
3	503 92 24-02	SPACER	1
4	503 89 83-01	ANTIVIBRATION ELEMENT	1
5	503 21 88-72	SCREW	2

C			
Key#	PART NUMBER	DESCRIPTION	QTY/ UNIT
1	521 89 39-01	HAND GUARD ASSY	1
2	537 15 27-01	•HEAT PROTECTOR	1
3	503 92 95-01	WEAR WASHER	1
4	503 89 30-03	SCREW	2
5	537 02 99-01	WEAR PROTECTION	1
6	505 15 59-01	CHAIN BRAKE ASSY	1
7	503 89 29-01	•PIN KNEE-JOINT	1
8	503 21 70-10	•SCREW CCRPANT	1
9	503 89 08-02	•KNEE JOINT ASSY	1
10	503 46 59-01	•BRAKE SPRING	1
11	735 31 08-20	•E-CLIP	1
12	537 04 30-01	•BRAKE BAND ASSY	1
13	503 85 52-01	•GUIDE BUSHING	1
14	503 21 70-72	•SCREW CCRPANT	5
15	537 10 80-02	•CAP	1
16	537 08 90-01	•WEAR PROTECTION	1
17	503 85 66-01	•COVER PLATE	1
18	510 10 07-01	•LABEL	1
19	503 22 00-01	•NUT FLANGE	2

D			
Key#	PART NUMBER	DESCRIPTION	QTY/ UNIT
1	503 89 06-01	AIR CONDUCTOR	1
2	505 24 76-02	STARTER ASSY	1
3	505 30 51-25	•STARTER CORD	1
4	503 21 77-16	•SCREW	1
5	503 21 28-10	•SCREW CCRPANT	2
6	537 09 25-01	•STARTER PULLEY	1
7	537 09 31-01	•SPRING CASSETTE ASSY	1
8	544 37 65-01	•STARTER HANDLE	1
9	505 25 97-01	•STARTER HOUSING	1
10	544 08 03-01	•SCREW	4
11	510 10 06-01	LABEL	1

E			
Key#	PART NUMBER	DESCRIPTION	QTY/ UNIT
1	521 88 68-01	CYLINDER COVER ASSY	1
2	501 63 97-01	•COVER	1
3	503 84 59-01	•HEAT PROTECTOR	1
4	522 51 14-01	•LABEL	1

F			
Key#	PART NUMBER	DESCRIPTION	QTY/ UNIT
1	503 21 74-12	SCREW	3
2	537 40 56-01	CHAIN GUIDE PLATE	1
3	537 14 65-01	BELLOWS	1
4	503 86 93-01	CARBURETTOR MOUNTING	2
5	503 21 75-12	SCREW	4
6	544 36 07-03	CARBURETTOR AREA BASE	1
7	537 17 19-07	CRANKCASE ASSY	1
8	503 20 07-76	•SCREW	2
9	537 04 03-01	•VALVE	1
10	721 12 07-30	•PIN	1
11	503 20 08-32	•SCREW IHSCM	6
12	503 21 51-01	•SCREW	2
13	503 86 92-01	•LATERAL SUPPORT	2
14	503 90 56-01	•GUIDE BUSHING	1
15	503 87 54-01	•BAR BOLT	2
16	503 90 56-01	•GUIDE BUSHING	1
17	503 20 25-16	SCREW IHSCM	2
18	503 43 65-01	POSITION SPRING	1
19	503 89 24-01	LOCK	1
20	503 93 04-01	BUMPER (OPTION)	1
21	503 90 59-01	SPIKE	1
22	537 07 12-01	CHAIN TENSIONER	1
23	503 88 63-01	CHAIN CATCHER PIN	1
24	544 33 10-01	HOSE	1
25	504 01 09-01	LINING	1
26	504 07 15-05	BRACKET	1
27	503 93 66-01	PRIMER HOUSING	1
28	544 44 97-01	SCREW	1
29	503 89 47-04	SNAP	3
30	503 88 86-01	AIR NOZZLE	1
31	503 21 39-01	SCREW	3
32	537 28 15-02	TANK CAP ASSY	1
33	503 57 89-01	•HOLDER	1
34	501 62 68-01	•GASKET	1
A	503 94 28-02	GASKET KIT	1



G			
Key#	PART NUMBER	DESCRIPTION	QTY/ UNIT
1	537 26 49-01	AIR FILTER	1
2	503 88 92-01	THROTTLE WIRE ASSY	1
3	503 21 74-50	SCREW	2
4	544 36 05-01	INLET ELBOW	1
5	537 39 31-02	CLAMP	1
6	503 28 32-10	CARBURETTOR	1
7	537 02 90-01	SUPPORT RING	1
8	503 86 96-02	CHOKE CONTROL	1
9	503 86 95-03	STOP CONTROL	1
10	503 86 97-02	SHORT CIRCUIT SPRING	1
11	544 32 51-01	HOSE	1
12	544 45 29-01	FLANGE	1
13	503 86 63-02	BELLOWS	1
14	537 42 28-01	INSULATION WALL	1
15	537 43 88-01	CLIP	1

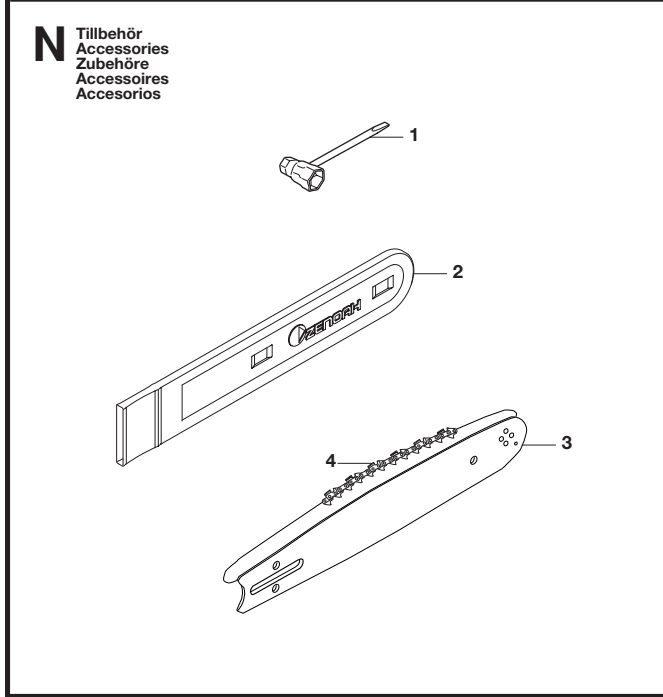
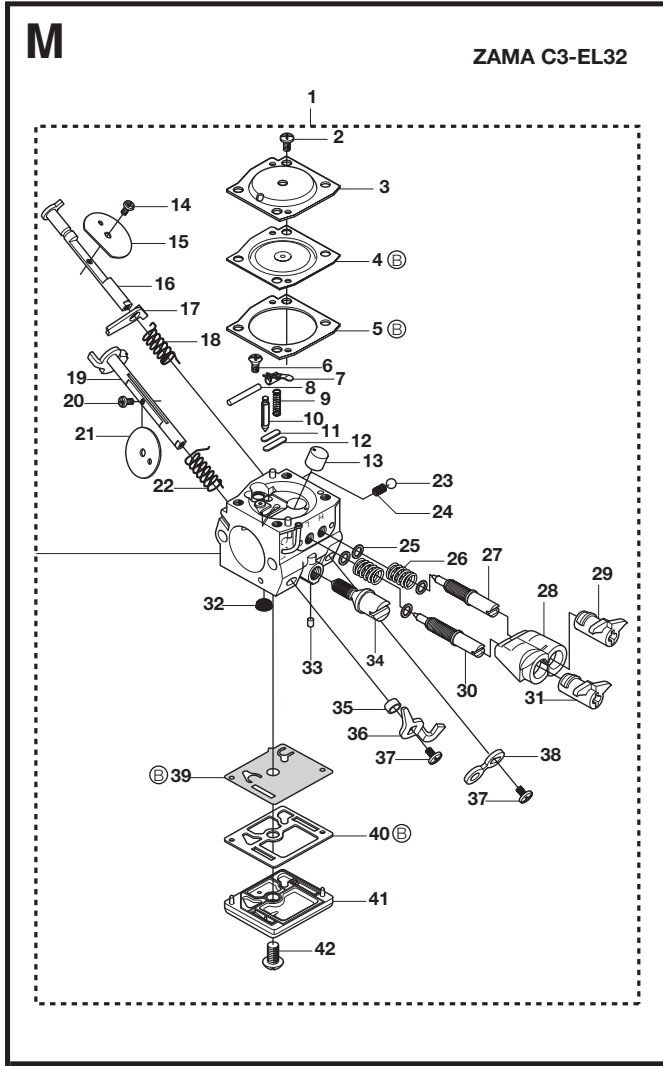
H			
Key#	PART NUMBER	DESCRIPTION	QTY/ UNIT
1	503 23 51-08	SPARK PLUG	1
2	725 53 33-55	SCREW IHSCM	4
3	503 66 54-01	DECOMPRESSION VALVE	1
4	503 97 13-01	HEAT DEFLECTOR	1
5	503 86 25-01	GASKET (A)	1
6	503 89 44-01	GASKET (A)	1
7	537 25 31-04	CYLINDER ASSY	1
8	537 22 36-04	•PISTON ASSY	1
9	503 28 90-11	••PISTON RING	1
10	737 44 10-00	••CIRCLIP	2
11	501 45 16-01	••NEEDLE BEARING	1
A	503 94 28-02	SET OF GASKETS (3 GASKETS)	1

I			
Key#	PART NUMBER	DESCRIPTION	QTY/ UNIT
1	544 02 83-01	MUFFLER ASSY	1
2	724 12 87-59	•SCREW CRPANM	1
3	503 86 36-01	•SPARK ARRESTOR SCREEN	1
4	544 80 98-01	SUPPORT	1
5	503 20 29-87	SCREW	2
6	503 20 07-76	SCREW	1

J			
Key#	PART NUMBER	DESCRIPTION	QTY/ UNIT
1	537 11 05-03	CLUTCH ASSY	1
2	537 08 00-01	•CLUTCH SPRING	1
3	503 98 00-71	CLUTCH DRUM	1
4	501 45 74-02	•GEAR WHEEL	1
5	503 25 52-01	•NEEDLE BEARING	1
6	503 89 21-02	PUMP PINION	1
7	544 18 01-03	OIL PUMP ASSY	1
8	537 06 91-02	•PUMP PISTON	1
9	503 23 00-60	•WASHER STEEL	2
10	503 89 16-01	•SPRING	1
11	503 89 15-01	•SPRING	1
12	537 02 71-01	•ADJUSTER	1
13	721 11 64-30	•PIN	1
14	503 21 74-12	SCREW IHSCM	1
15	537 41 32-01	OIL PRESSURE HOSE	1
16	537 10 11-01	OIL HOSE	1
17	504 71 00-03	OIL PLUMMET	1

K			
Key#	PART NUMBER	DESCRIPTION	QTY/ UNIT
1	504 20 68-01	CRANKSHAFT	1
2	501 45 16-01	•NEEDLE BEARING	1
3	503 25 20-02	•BALL BEARING	1
4	503 26 09-01	••SEALING	1
5	738 22 02-25	•BALL BEARING	1
6	505 27 57-19	SEALING RING	1

L			
Key#	PART NUMBER	DESCRIPTION	QTY/ UNIT
1	503 89 87-04	WIRING ASSY	1
2	501 48 54-02	SPARK PLUG CAP	1
3	544 04 70-01	IGNITION MODULE	1
4	503 21 55-25	SCREW	2
5	503 22 04-01	NUT	1
6	503 82 43-01	FLYWHEEL	1
7	503 78 32-01	•SPRING	2
8	503 89 50-01	•STARTER PAWL	2
9	503 79 05-02	•RIVET	2



Key#	PART NUMBER	DESCRIPTION	QTY/ UNIT
1	503 28 32-10	CARBURETTOR	1
2	503 48 05-01	SCREW	4
3	537 17 60-01	COVER	1
4	537 17 59-01	DIAPHRAGM (B)	1
5	503 88 44-01	GASKET (B)	1
6	503 48 01-01	SCREW	1
7	537 17 64-01	LEVER	1
8	503 48 00-01	PIN RETAINING SCREW	1
9	537 17 63-01	SPRING	1
10	537 17 62-01	VALVE	1
11	537 17 78-01	PLUG	1
12	503 53 56-01	PLUG WELCH	1
13	537 41 61-01	NOZZLE ASSY	1
14	503 52 36-01	SCREW	1
15	544 05 66-01	CHOKE VALVE	1
16	537 26 67-01	SHAFT ASSY	1
17	544 05 67-01	LEVER	1
18	537 17 66-01	SPRING	1
19	537 26 63-01	SHAFT ASSY	1
20	503 48 18-01	SCREW	1
21	537 26 66-01	VALVE	1
22	537 17 61-01	SPRING	1
23	537 01 25-01	BALL	1
24	537 01 26-01	SPRING	2
25	503 90 31-01	WASHER	4
26	503 48 08-01	SPRING	2
27	537 17 85-01	SCREW	1
28	503 90 34-01	RETAINER	1
29	503 90 33-01	LIMITER CAP	1
30	537 26 70-01	SCREW	1
31	503 90 32-01	LIMITER CAP	1
32	503 53 57-01	STRAINER	1
33	503 48 11-01	PIECE	1
34	537 17 76-01	SCREW	1
35	503 48 19-01	COLLAR	1
36	537 17 69-01	LEVER	1
37	503 47 90-01	SCREW	2
38	537 17 75-01	LEVER	1
39	537 38 02-01	DIAPHRAGM (B)	1
40	503 61 66-01	GASKET PUMP (B)	1
41	537 17 68-01	COVER	1
42	503 47 96-01	SCREW	1
B	537 38 03-01	GASKET KIT	1

Key#	PART NUMBER	DESCRIPTION	QTY/ UNIT
1	501 69 17-01	COMBINATION WRENCH	1
2	501 83 45-07	BAR GUARD (24"-28")	1
2	501 83 44-19	BAR GUARD (18"-22")	1
3	510 26 16-72	GUIDE BAR (18")	1
3	510 26 16-80	GUIDE BAR (20")	1
4	510 27 89-72	CHAIN (21BPX72)	1
4	510 27 89-72	CHAIN (21BPX80)	1