

# PARTS LIST

## BRUSHCUTTERS

<b>BCZ4500DL</b>	<b>BCZ5000DL</b>
<b>BCZ4500DW</b>	<b>BCZ5000DW</b>
<b>BCZ4500CL</b>	<b>BCZ5000CL</b>

### NOTE :

1. Use KOMATSU ZENOAH genuine parts as specified in the parts list for repair and/or replacement.
2. KOMATSU ZENOAH does not warrant the machines, which have been damaged by the use of any parts other than those specified by the company.
3. When placing parts orders for repair and/or replacement, check if the model name and the serial number are applicable to those specified in the parts list, then use parts number described in the parts list.
4. The contents described in the parts list are accurate as of the date and may change due to improvement.
5. The parts for the machine shall be supplied ten (10) years after the machine is discontinued. [It is possible that some specific parts may be subject to change of their delivery term and list price within the limit of ten (10) years after the machine is discontinued. It is also possible that some parts may be available even after the limit of ten (10) years.]

### APPLICABLE SERIAL NUMBERS:

DRIVE UNIT	40100101 and up
ENGINE UNIT	40100101 and up

April 2005

Fig.1 CUTTER GROUP

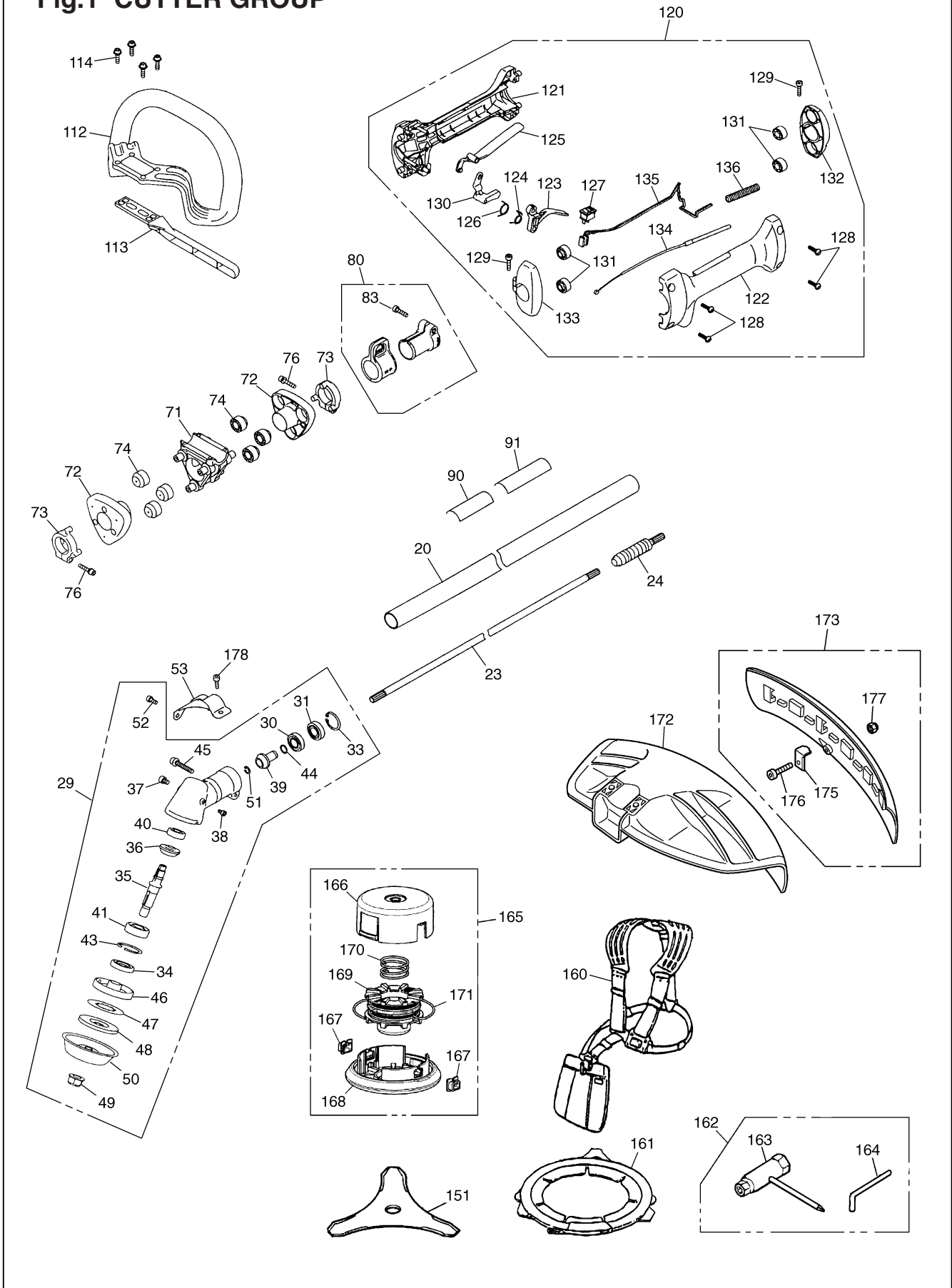


Fig.1 CUTTER GROUP

Key#	PART NUMBER	DESCRIPTION	Q'TY /UNIT	NOTE	Key#	PART NUMBER	DESCRIPTION	Q'TY /UNIT	NOTE
20	848JL05823	PIPE COMP. 1500x28xT2	1		126	848JL233F2	• SPRING	1	
23	848JL058E1	SHAFT 1470x10, Spline ø10x11 tooth	1		127	T4506-52110	• SWITCH	1	
24	848JL05832	JOINT COMP.	1		128	8488251601	• SCREW TP5(P-tight)xL16 T27	4	
29	848JL06100	GEARCASE ASSY	1		129	4820-13180	• BOLT TORX M5xL20 T27	2	
30	06000-06001	• BEARING	1		130	848JL233G2	• LEVER	1	
31	06001-06001	• BEARING	1		131	848JL233H3	• ABSORBER	4	
33	04065-02812	• RING	1		132	848JL233K2	• HOLDER REAR		
34	8488AL3500	• SEAL	1		133	848JL233J2	• HOLDER FRONT	1	
35	848JL061B4	• SHAFT	1		134	8488P40081	• CABLE COMP.	1	
36	848JL061C2	• GEAR	1		135	8488M10070	• CORD COMP.	2	
37	T4950-60800	• BOLT TORX M6xL8 T27	1		136	8488H20701	• TUBE	1	
38	T4950-40800	• BOLT TORX M4xL8 T27	1		151	848JL092A2	BLADE	1	
39	848JL061D3	• PINION	1		160	6220-17202	HARNES ASSY	1	
40	06000-06000	• BEARING	1		161	848JL092B1	COVER BLADE	1	
41	06004-06202	• BEARING	1		162	8488U00001	TOOL SET	1	
43	04065-03515	• RING, SNAP	1		163	T4017-91130	• SOCKET	1	
44	3130-13270	• RING	1		164	3540-91110	• BAR	1	
45	T4950-63540	• BOLT TORX	1		165	848JL06912	TAPHEAD ASSY	1	
46	848JL061F3	• HOLDER (A)	1		166	-	• CASE	1	
47	848JL061L2	• PLATE	1		167	T3189-15191	• EYELET	2	
48	848JL061G2	• HOLDER (B)	1		168	848JL069N0	• COVER	1	
49	848JL061K1	• NUT M12xP1.25	1		169	T3189-15142	• CORD HOLDER	1	
50	848JL061J3	• COVER	1		170	T3189-15160	• SPRING	1	
51	04065-01110	• SNAP RING	1		171	T3189-15180	• CORD	1	
52	T1501-32120	• BOLT TORX M5xL12 T27	1		172	848JL066A4	GUARD	1	
53	848JL066C2	PLATE	1		173	848JL06634	GURD ASSY	1	
71	848JL132B2	BRACKET	1		175	848JL066B2	• BLADE	1	
72	848JL132C2	HOLDER	2		176	4820-72150	• BOLT TORX M4xL16 T27	1	
73	848JL132D1	HOLDER	2		177	3238-13150	• NUT	1	
74	848JL132E2	CUSHION	6		178	T4950-63040	BOLT TORX M6xL30 T27	2	
76	T4950 52540	BOLT TORX M5xL25 T27	2						
80	848JL23812	HANGER ASSY • HANGER • CLAMP	1						
83	4820-13180	• BOLT TORX M5xL20 T27	1						
90	848JJ190R1	PLATE NAME	1						
91	6425-12552	PLATE	1						
112	848JL232A2	HANDLE	1						
113	848JL232F3	BARRIER	1						
114	T4950-52030	BOLT TORX TORX 5xL20 T27	4						
120	848JL23313	GRIP ASSY	1						
121	848JL233A4	• BODY-R	1						
122	848JL233B3	• BODY-L	1						
123	848JL233C3	• LEVER	1						
124	848JL233D2	• SPRING	1						
125	848JL233E2	• LEVER-S	1						

\* No.45 (1252-30635) might be changed to T4950-63540 in the future.

Fig.2 CUTTER GROUP

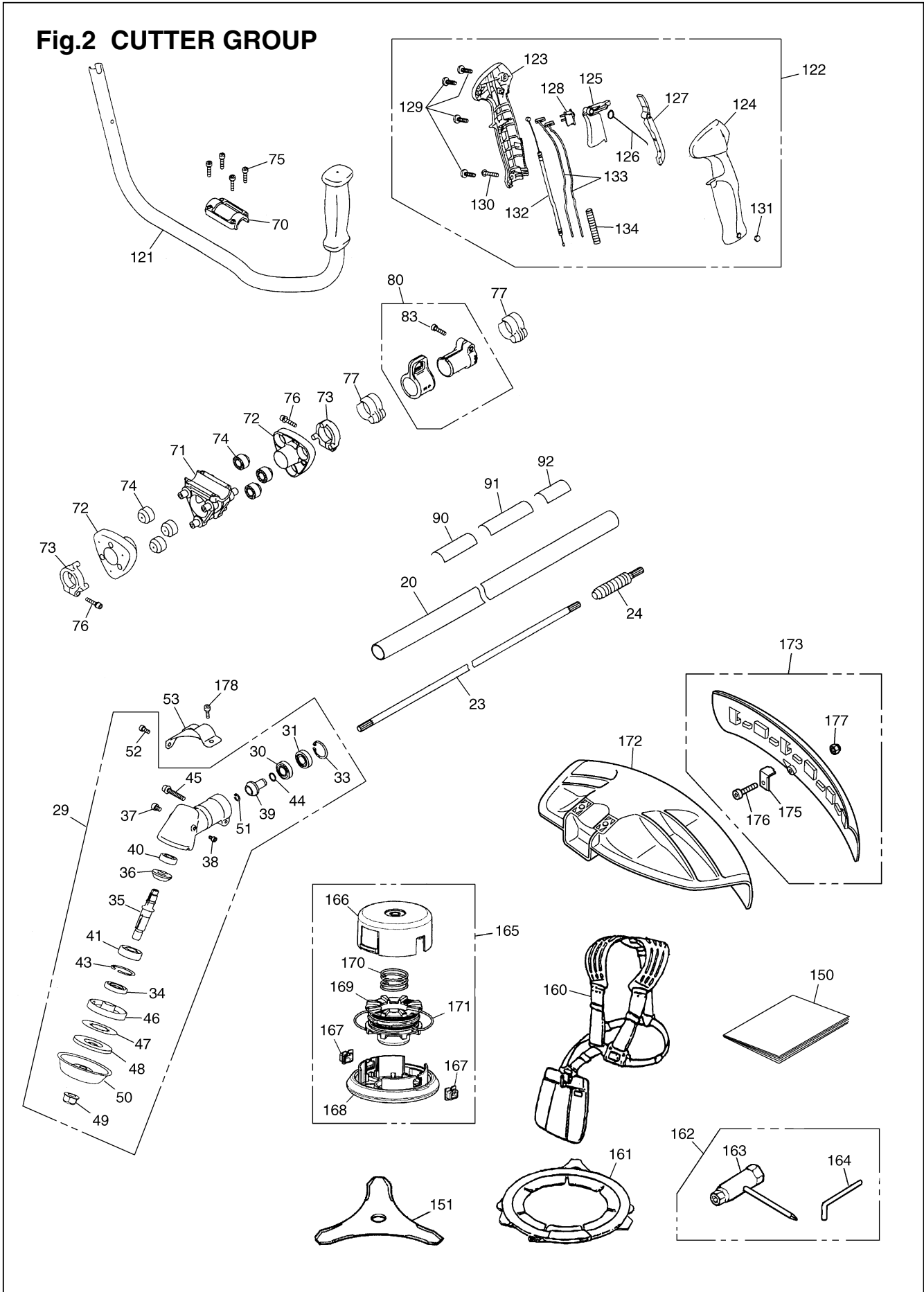


Fig.2 CUTTER GROUP

Key#	PART NUMBER	DESCRIPTION	Q'TY /UNIT	NOTE	Key#	PART NUMBER	DESCRIPTION	Q'TY /UNIT	NOTE
20	848JL05823	PIPE COMP.	1		129	8488241600	• SCREW	4	
23	848JL058E1	SHAFT	1		130	T4960-53010	• SCREW TORX	1	
24	848JL05832	JOINT COMP.	1		131	3320-15310	• NUT	1	
29	848JL06100	GEARCASE ASSY	1		132	8488P00111	• CABLE COMP.	1	
30	06000-06001	• BEARING	1		133	8488M10060	• CORD COMP.	2	
31	06001-06001	• BEARING	1		134	8488H27501	• TUBE	1	
33	04065-02812	• RING	1		151	848JL092A2	BLADE	1	
34	8488AL3500	• SEAL	1		160	6220-17202	HARNES ASSY	1	
35	848JL061B4	• SHAFT	1		161	848JL092B1	COVER BLADE	1	
36	848JL061C2	• GEAR	1		162	8488U00001	TOOL SET	1	
37	T4950-60800	• BOLT TORX	1		163	T4017-91130	• SOCKET	1	
38	T4950-40800	• BOLT TORX	1		164	3540-91110	• BAR	1	
39	848JL061D3	• PINION	1		165	848JL06912	TAPHEAD ASSY	1	
40	06000-06000	• BEARING	1		166	-	• CASE	1	
41	06004-06202	• BEARING	1		167	T3189-15191	• EYELET	2	
43	04065-03515	• RING, SNAP	1		168	848JL069N0	• COVER	1	
44	3130-13270	• RING	1		169	T3189-15142	• CORD HOLDER	1	
45	T4950-63540	• BOLT TORX	1		170	T3189-15160	• SPRING	1	
46	848JL061F3	• HOLDER (A)	1		171	T3189-15180	• CORD	1	
47	848JL061L2	• PLATE	1		172	848JL066A4	GUARD	1	
48	848JL061G2	• HOLDER (B)	1		173	848JL06634	GURD ASSY	1	
49	848JL061K1	• NUT M12xP1.25	1		175	848JL066B2	• BLADE	1	
50	848JL061J3	• COVER	1		176	4820-72150	• BOLT TORX M4xL16 T27	1	
51	04065-01110	• SNAP RING	1		177	3238-13150	• NUT	1	
52	T1501-32120	• BOLT TORX M5xL12 T27	1		178	T4950-63040	BOLT TORX	2	
53	848JL066C2	PLATE	1						
70	848JL132K1	BRACKET-UP	1						
71	848JL132B2	BRACKET	1						
72	848JL132C2	HOLDER	2						
73	848JL132D1	HOLDER	2						
74	848JL132E2	CUSHION	6						
75	4820-13180	BOLT TORX M5xL20 T27	4						
76	T4950-52540	BOLT TORX	2						
77	848JL132L2	CLAMP	2						
80	848JL23812	HANGER ASSY	1						
		• HANGER	1						
		• CLAMP	1						
83	4820-13180	• BOLT TORX M5xL20 T27	1						
90	848JJ190R1	PLATE NAME	1						
91	6425-12552	PLATE	1						
121	848JL03212	HANDLE COMP.	1						
122	848JL03313	GRIP ASSY	1						
123	848JL033A3	• BODY-R	1						
124	848JL033B4	• BODY-L	1						
125	848JL033C3	• LEVER	1						
126	848JL033D2	• SPRING	1						
127	848JL033E3	• LEVER-S	1						
128	T4506-52110	• SWITCH	1						

\* No.45 (1252-30635) might be changed to T4950-63540 in the future.

Fig.3 CUTTER GROUP

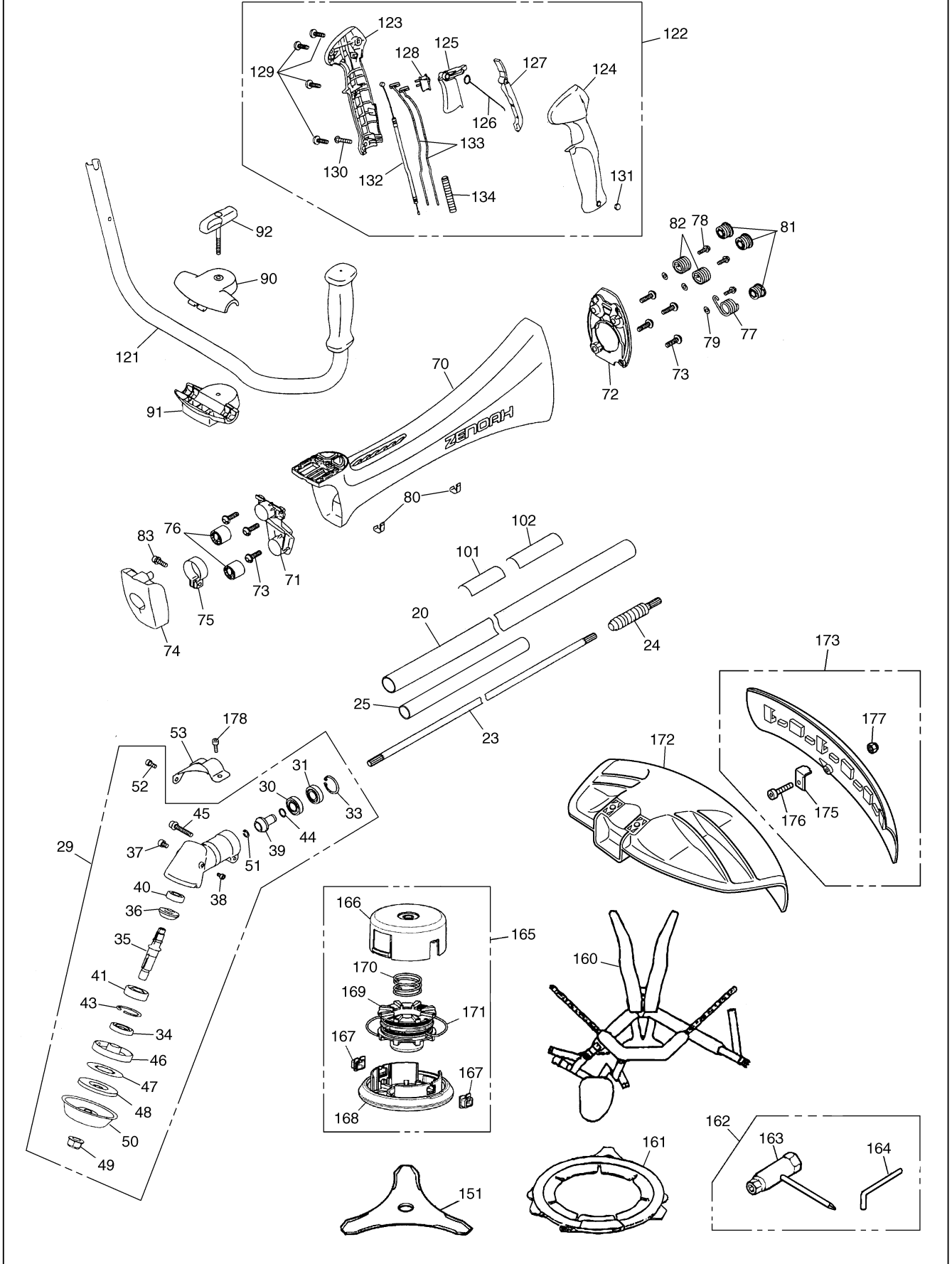


Fig.3 CUTTER GROUP

Key#	PART NUMBER	DESCRIPTION	Q'TY /UNIT	NOTE	Key#	PART NUMBER	DESCRIPTION	Q'TY /UNIT	NOTE
20	848JL05823	PIPE COMP.	1		124	848JL033B4	• BODY-L	1	
					125	848JL033C3	• LEVER	1	
					126	848JL033D2	• SPRING	1	
23	848JL058E1	SHAFT	1		127	848JL033E3	• LEVER-S	1	
24	848JL05832	JOINT COMP.	1		128	T4506-52110	• SWITCH	1	
25	848JL058F0	SLEEVE	1		129	8488241600	• SCREW	4	
29	848JL06100	GEARCASE ASSY	1		130	T4960-53010	• SCREW TORX	1	
30	06000-06001	• BEARING	1		131	3320-15310	• NUT	1	
31	06001-06001	• BEARING	1		132	8488P00111	• CABLE COMP.	1	
					133	8488M10060	• CORD COMP.	2	
33	04065-02812	• RING	1		134	8488H27501	• TUBE	1	
34	8488AL3500	• SEAL	1						
35	848JL061B4	• SHAFT	1		151	848JL092A2	BLADE	1	
36	848JL061C2	• GEAR	1						
37	T4950-60800	• BOLT TORX	1		160	848JL03611	HARNES ASSY	1	
38	T4950-40800	• BOLT TORX	1		161	848JL092B1	COVER BLADE	1	
39	848JL061D3	• PINION	1		162	8488U00001	TOOL SET	1	
40	06000-06000	• BEARING	1		163	T4017-91130	• SOCKET	1	
41	06004-06202	• BEARING	1		164	3540-91110	• BAR	1	
					165	848JL06912	TAPHEAD ASSY	1	
43	04065-03515	• RING, SNAP	1		166	-	• CASE	1	
44	3130-13270	• RING	1		167	T3189-15191	• EYELET	2	
45	T4950-63540	• BOLT TORX	1		168	848JL069N0	• COVER	1	
46	848JL061F3	• HOLDER (A)	1		169	T3189-15142	• CORD HOLDER	1	
47	848JL061L2	• PLATE	1		170	T3189-15160	• SPRING	1	
48	848JL061G2	• HOLDER (B)	1		171	T3189-15180	• CORD	1	
49	848JL061K1	• NUT M12xP1.25	1		172	848JL066A4	GUARD	1	
50	848JL061J3	• COVER	1		173	848JL06634	GURD ASSY	1	
51	04065-01110	• SNAP RING	1						
52	T1501-32120	• BOLT TORX M5xL12 T27	1		175	848JL066B2	• BLADE	1	
53	848JL066C2	PLATE	1		176	4820-72150	• BOLT TORX M4xL16 T27	1	
					177	3238-13150	• NUT	1	
70	848JL031A3	FRAME	1		178	T4950-63040	BOLT TORX	2	
71	848JL031E2	BRACKET-F	1						
72	848JL031F3	BRACKET-L	1						
73	8488251601	SCREW TP5(P-tight)xL16 T27	7						
74	848JL031B3	HOLDER	1						
75	848JL031C2	BAND	1						
76	848JL031J3	ABSORBER	2						
77	848JL031N3	SPRING	1						
78	4820-85510	BOLT TORX M5xL16 T27	3						
79	01642-20508	WASHER	3						
80	848JL032L2	CLAMP	2						
81	848JL031K3	ABSORBER	3						
82	848JL031P3	SPRING	2						
83	T4950-62040	BOLT TORX	1						
90	848JL032C2	BRACKET-UP	1						
91	848JL032D2	BRACKET-LO	1						
92	848JL032G2	KNOB	1						
101	848JJ090R1	PLATE NAME	1						
102	6425-12552	PLATE	1						
121	848JL03212	HANDLE COMP.	1						
122	848JL03313	GRIP ASSY	1						
123	848JL033A3	• BODY-R	1						

\* No.45 (1252-30635) might be changed to T4950-63540 in the future.

Fig.4 ENGINE GROUP

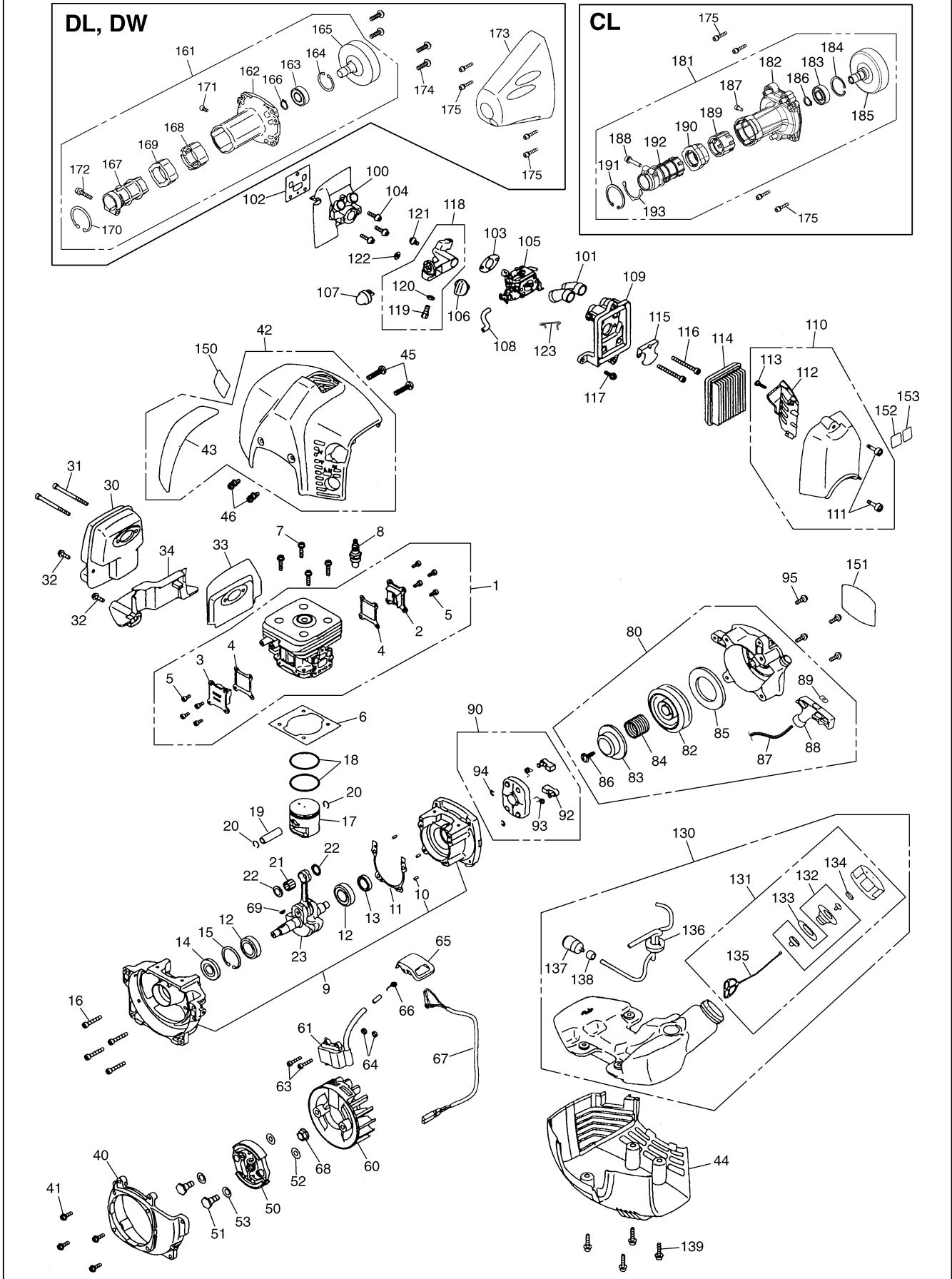


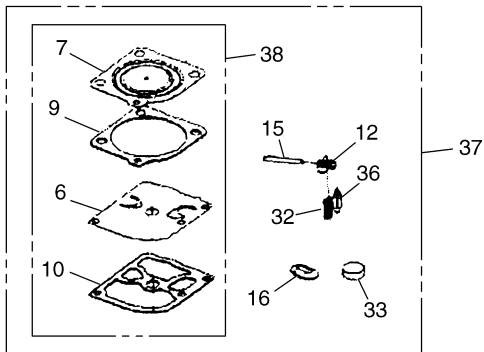
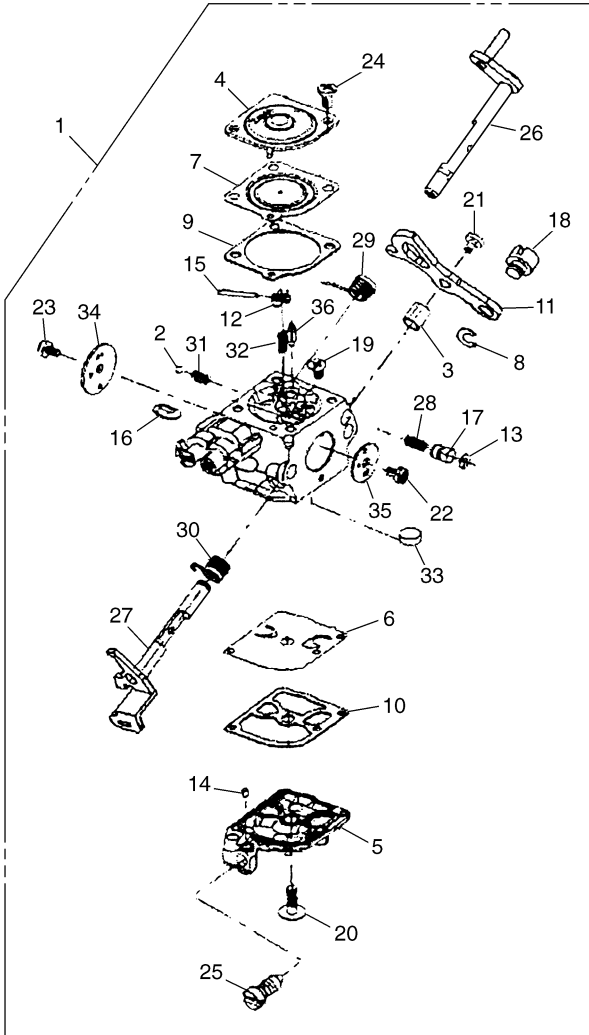


Fig.4 ENGINE GROUP

Key#	PART NUMBER	DESCRIPTION	Q'TY /UNIT	NOTE	Key#	PART NUMBER	DESCRIPTION	Q'TY /UNIT	NOTE
1	848GD01211	CYLINDER COMP.	1		100	848H7014A2	INSULATOR	1	
2	848GD012C1	• COVER, TR, S	1		101	848H7082A1	PIPE	1	
3	848GD012D1	• COVER, TR, F	1		102	848H7014B1	GASKET	1	
4	848H7012E1	• GASKET, TR	2		103	848H7014C0	GASKET, CARB	1	
5	4820-16310	• BOLT TORX M4xL10 T27	8		104	T4950-52021	BOLT TORX M5xL20 T27	3	
6	848H7012B1	GASKET	1		105	848GD08101	CARBURETOR ASSY	1	
7	4820-12130	BOLT TORX M5xL22 T27	4		106	848H7082F0	KNOB	1	
8	3699-91867	SPARK PLUG	1	CMR7H	107	2850-81900	PUMP	1	
9	848H702111	CRANKCASE COMP.	1		108	8488F40450	TUBE	1	
10	2629-21130	• PIN	3		109	848H708311	BODY ASSY	1	
11	T1400-21140	GASKET, CASE	1		110	848H708321	COVER ASSY	1	
12	84889F3511	BEARING	2		111	8488052011	• SCREW	2	
13	T4019-21210	SEAL	1		112	848H7083Y0	• GUARD	1	
14	1400-21220	SEAL	1		113	8488241600	• SCREW	1	
15	04065-03515	RING, SNAP	1		114	848H7083F1	ELEMENT	1	
16	4820-21310	BOLT TORX M5xL30 T27	4		115	T4012-82510	PLATE	1	
17	848GD041A2	PISTON	1		116	4820-15310	BOLT TORX M5xL50 T27	2	
18	2670-41211	RING	2		117	4820-85510	BOLT TORX M5xL16 T27	1	
19	2880-41310	PIN	1		118	848H708220	BRACKET ASSY	1	
20	3350-41320	SNAP RING	2		119	T1600-13170	• SCREW	1	
21	1400-41410	BEARING	1		120	0282-10604	• NUT	1	
22	2670-41510	WASHER	2		121	T4950-51011	BOLT TORX M5xL10 T27	1	
23	848H704201	CRANKSHAFT COMP.	1		122	848H7083Z0	WASHER	1	
					123	848H7089C0	ROD	1	
30	848H7015A1	MUFFLER	1		130	848H708502	TANK ASSY	1	
31	01252-30565	BOLT M5xL65	2		131	T1015-85202	• CAP ASSY	1	
32	4820-85510	BOLT TORX M5xL16 T27	2		132	4500-85300	•• HOLDER ASSY	1	
33	848H7015C1	GASKET	1		133	4500-85220	•• PACKING	1	
34	T1400-15220	PLATE	1		134	5601-85260	•• FILTER	1	
40	848H7053A2	COVER	1		135	4820-85260	•• STOPPER	1	
41	4820-85510	BOLT TORX M5xL16 T27	4		136	848H708531	• PIPE COMP.	1	
42	848H703110	COVER-TOP ASSY	1		137	3302-85400	• FILTER	1	
43	848H7031E0	• TAPE	1		138	2841-31280	• COLLER	1	
44	848H7031N1	COVER-BOTTOM	1		139	8488153000	BOLT	4	
45	T4970-52000	SCREW TORX 5xL20	2		150	848H7090B1	LABEL, COVER	1	
46	T4950-51011	BOLT TORX M5xL10 T27	2		151	848GD090C1	LABEL, RECOIL	1	
50	848H705110	SHOE COMP.	1		152	2634-31420	LABEL (CE)	1	
51	1200-51211	SCREW	2		153	8488X01180	LABEL	1	
52	1200-51230	WASHER	2						
53	1200-51241	WASHER	2		161	848JL15302	HOUSING ASSY	1	DL, DW
60	848H707111	ROTOR	1		162	848JL153A2	• HOUSING	1	DL, DW
61	848H707121	COIL ASSY	1		163	06004-06202	• BEARING	1	DL, DW
63	T4950-42200	BOLT TORX M4xL22 T27	2		164	04065-03515	• RING, snap	1	DL, DW
64	1260-71261	SPACER	2		165	848JL051A1	• DRUM	1	DL, DW
65	T1400-72110	CAP	1		166	04064-01510	• SNAP RING	1	DL, DW
66	1900-72120	SPRING	1		167	848JL153B2	• CLAMP	1	DL, DW
67	T1400-73200	CORD COMP.	1		168	848JL153D2	• ABSORBER	1	DL, DW
68	1400-43230	NUT	1		169	848JL153H2	• ABSORBER	1	DL, DW
69	1000-43240	KEY	1		170	04065-04718	• RING	1	DL, DW
80	848H707511	RECOIL ASSY	1		171	4820-12350	• BOLT TORX M5xL10 T27	1	DL, DW
82	848H7075C1	• REEL	1		172	T4950-63040	• BOLT TORX M6xL30 T27	1	DL, DW
83	848H7075L1	• PLATE, CAM	1		173	848JL153J2	COVER	1	DL, DW
84	848H7075K1	• SPRING, DAMPER	1		174	8488251601	SCREW TP5(P-tight)xL16 T27	4	DL, DW
85	848H7075B1	• SPRING, SPIRAL	1		175	T4950-62040	BOLT TORX M6xL20 T27	4	
86	848H7075E1	• SCREW	1		181	848JL05303	HOUSING ASSY	1	CL
87	848H7075F1	• ROPE	1		182	848JL053A5	• HOUSING	1	CL
88	848H7075J1	• KNOB	1		183	06004-06202	• BEARING	1	CL
89	848H7075G1	• STOPPER	1		184	04065-03515	• RING, SNAP	1	CL
90	848H707521	PULLEY ASSY	1		185	848JL051A1	• DRUM	1	CL
92	848H7075R1	• RATCHET	2		186	04064-01510	• SNAP RING	1	CL
93	848H7075S0	• SPRING	2		187	4820-12350	• BOLT TORX M5xL10 T27	1	CL
94	1034-72180	• E RING	2		188	T4950-53040	• BOLT TORX M5xL30 T27	1	CL
95	4820-32120	BOLT TORX	4		189	848JL053D1	• ABSORBER	1	CL
					190	848JL053H0	• ABSORBER	1	CL
					191	04065-04518	• RING	1	CL
					192	848JL053B1	• CLAMP	1	CL
					193	848JL053Y0	• SPACER	1	CL

BCZ4500DL/BCZ4500DW/BCZ4500CL

Fig.5 CARBURETOR



Key#	PART NUMBER	DESCRIPTION	Q'TY /UNIT	NOTE
1	848GD08101	CARBURETOR ASSY	1	C10-Z5
2	848H7080Y0	• BALL	1	
3	848H7081S0	• COLLAR	1	
4	848C5081G0	• COVER, METERING	1	
5	848C5081H0	• COVER, PUMP	1	
6	848H7081M0	• DIAPHRAGM, PUMP	1	
7	848C5081K0	• DIAPHRAGM ASSY, METERING	1	
8	848H7089A0	• E-RING	1	
9	848C5081L0	• GASKET, METERING CHAMBER	1	
10	848C5081N0	• GASKET, PUMP	1	
11	848H7081Z0	• LEVER, THROTTLE	1	
12	848C5081F0	• LEVER, METERING	1	
13	848C5080P0	• O-RING	1	
14	848C5081Y0	• PIECE, FRICTION	1	
15	848C5081E0	• PIN	1	
16	848C5081J0	• PLUG, WELCH	1	
17	848C5080N0	• PLUNGER	1	
18	848H7089B0	• POST	1	
19	848C5081D0	• SCREW	1	
20	848C5081P0	• SCREW	1	
21	848C5080R0	• SCREW	1	
22	848H7081W0	• SCREW	1	
23	848C5081W0	• SCREW	1	
24	848C5080B0	• SCREW (WITH SEPRATION)	2	
25	848H7081X0	• SCREW, THROTTLE ADJUST	1	
26	848H7080E0	• SHAFT ASSY, CHOKE	1	
27	848H7081T0	• SHAFT ASSY, THROTTLE	1	
28	848C5080M0	• SPRING	1	
29	848H7080D0	• SPRING, CHOKE RETURN	1	
30	848H7081R0	• SPRING, THROTTLE RETURN	1	
31	848H7080Z0	• SPRING, FRICTION	1	
32	848H7081C0	• SPRING, METERING LEVER	1	
33	848C5081A0	• STRAINER	1	
34	848H7080C0	• VALVE, CHOKE	1	
35	848H7081U0	• VALVE, THROTTLE	1	
36	848C5081B0	• VALVE, INLET NEEDLE	1	
37	848H700630	REBUILD KIT	1	
38	848H700620	• GASKET & DIAPHRAGM KIT	1	



Fig.6 CUTTER GROUP

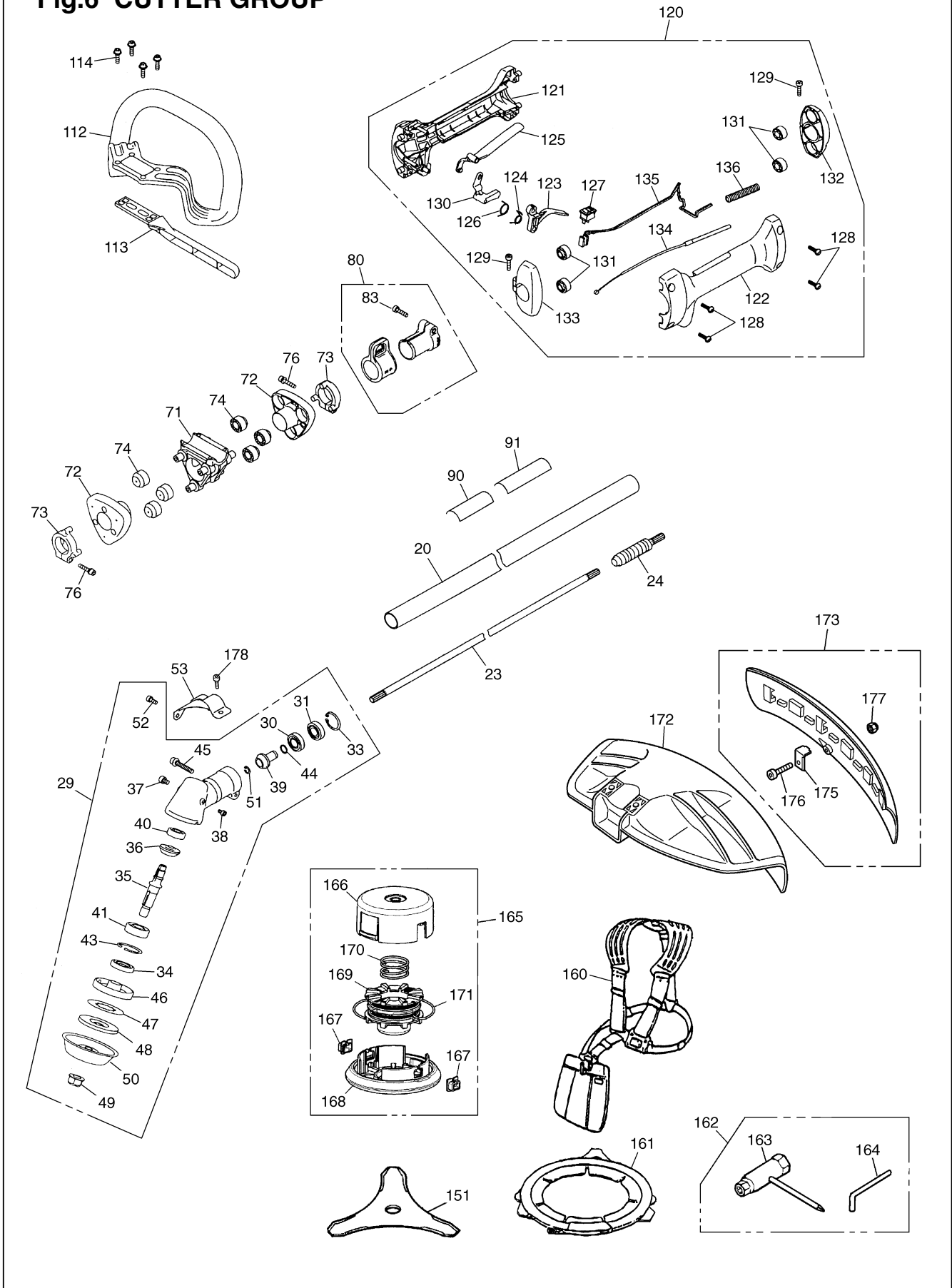


Fig.6 CUTTER GROUP

Key#	PART NUMBER	DESCRIPTION	Q'TY /UNIT	NOTE	Key#	PART NUMBER	DESCRIPTION	Q'TY /UNIT	NOTE
20	848JL05823	PIPE COMP. 1500x28xT2	1		126	848JL233F2	• SPRING	1	
23	848JL058E1	SHAFT 1470x10, Spline ø10x11 tooth	1		127	T4506-52110	• SWITCH	1	
24	848JL05832	JOINT COMP.	1		128	8488251601	• SCREW TP5(P-tight)xL16 T27	4	
29	848JL06100	GEARCASE ASSY	1		129	4820-13180	• BOLT TORX M5xL20 T27	2	
30	06000-06001	• BEARING	1		130	848JL233G2	• LEVER	1	
31	06001-06001	• BEARING	1		131	848JL233H3	• ABSORBER	4	
33	04065-02812	• RING	1		132	848JL233K2	• HOLDER REAR		
34	8488AL3500	• SEAL	1		133	848JL233J2	• HOLDER FRONT	1	
35	848JL061B4	• SHAFT	1		134	8488P40081	• CABLE COMP.	1	
36	848JL061C2	• GEAR	1		135	8488M10070	• CORD COMP.	2	
37	T4950-60800	• BOLT TORX M6xL8 T27	1		136	8488H20701	• TUBE	1	
38	T4950-40800	• BOLT TORX M4xL8 T27	1		151	848JL092A2	BLADE	1	
39	848JL061D3	• PINION	1		160	6220-17202	HARNES ASSY	1	
40	06000-06000	• BEARING	1		161	848JL092B1	COVER BLADE	1	
41	06004-06202	• BEARING	1		162	8488U00001	TOOL SET	1	
43	04065-03515	• RING, SNAP	1		163	T4017-91130	• SOCKET	1	
44	3130-13270	• RING	1		164	3540-91110	• BAR	1	
45	T4950-63540	• BOLT TORX	1		165	848JL06912	TAPHEAD ASSY	1	
46	848JL061F3	• HOLDER (A)	1		166	-	• CASE	1	
47	848JL061L2	• PLATE	1		167	T3189-15191	• EYELET	2	
48	848JL061G2	• HOLDER (B)	1		168	848JL069N0	• COVER	1	
49	848JL061K1	• NUT M12xP1.25	1		169	T3189-15142	• CORD HOLDER	1	
50	848JL061J3	• COVER	1		170	T3189-15160	• SPRING	1	
51	04065-01110	• SNAP RING	1		171	T3189-15180	• CORD	1	
52	T1501-32120	• BOLT TORX M5xL12 T27	1		172	848JL066A4	GUARD	1	
53	848JL066C2	PLATE	1		173	848JL06634	GURD ASSY	1	
71	848JL132B2	BRACKET	1		175	848JL066B2	• BLADE	1	
72	848JL132C2	HOLDER	2		176	4820-72150	• BOLT TORX M4xL16 T27	1	
73	848JL132D1	HOLDER	2		177	3238-13150	• NUT	1	
74	848JL132E2	CUSHION	6		178	T4950-63040	BOLT TORX M6xL30 T27	2	
76	T4950 52540	BOLT TORX M5xL25 T27	2						
80	848JL23812	HANGER ASSY							
		• HANGER	1						
		• CLAMP							
83	4820-13180	• BOLT TORX M5xL20 T27	1						
90	848JL190R1	PLATE NAME	1						
91	6425-12552	PLATE	1						
112	848JL232A2	HANDLE	1						
113	848JL232F3	BARRIER	1						
114	T4950-52030	BOLT TORX TORX 5xL20 T27	4						
120	848JL23313	GRIP ASSY	1						
121	848JL233A4	• BODY-R	1						
122	848JL233B3	• BODY-L	1						
123	848JL233C3	• LEVER	1						
124	848JL233D2	• SPRING	1						
125	848JL233E2	• LEVER-S	1						

\* No.45 (1252-30635) might be changed to T4950-63540 in the future.

Fig.7 CUTTER GROUP

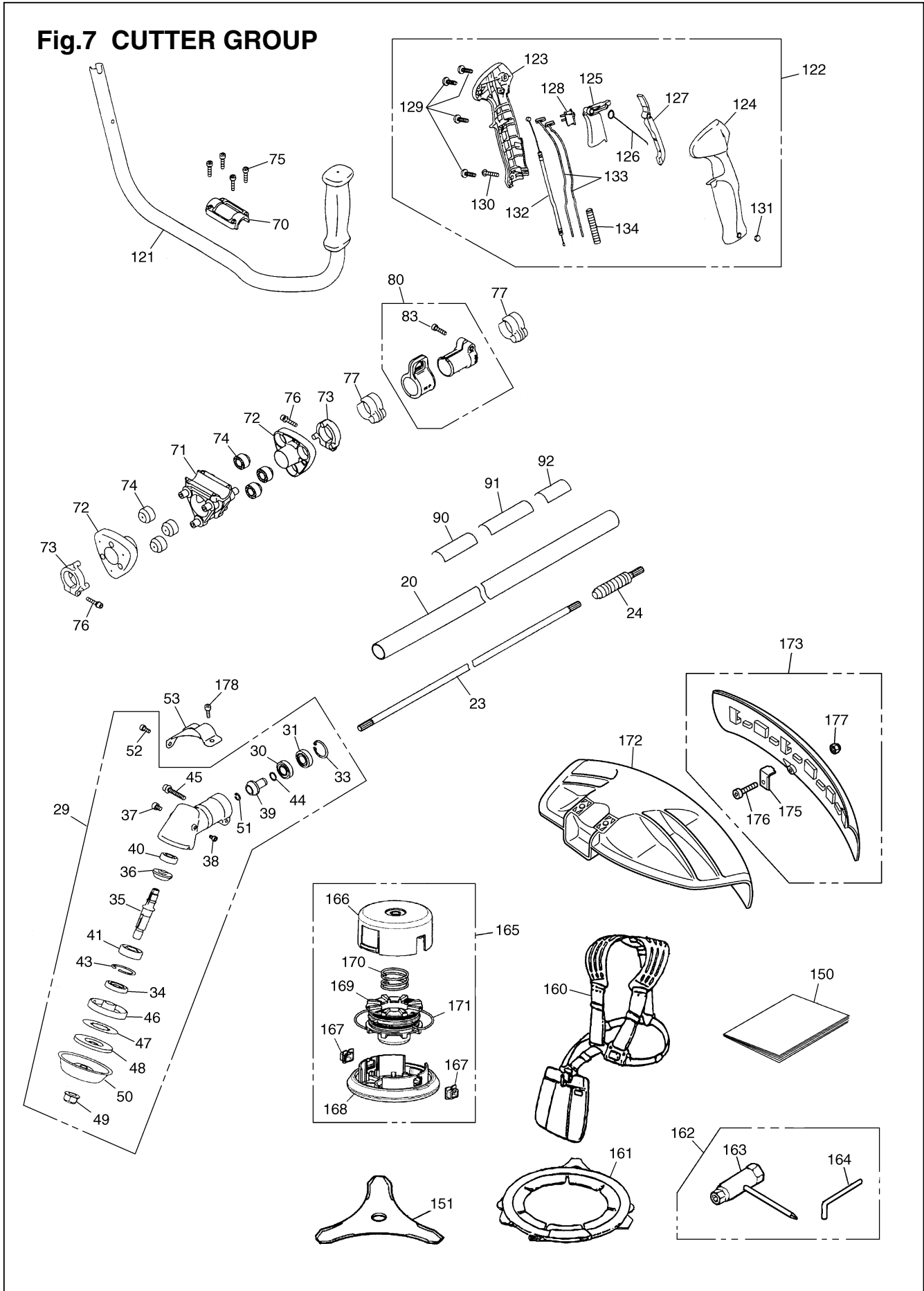


Fig.7 CUTTER GROUP

Key#	PART NUMBER	DESCRIPTION	Q'TY /UNIT	NOTE	Key#	PART NUMBER	DESCRIPTION	Q'TY /UNIT	NOTE
20	848JL05823	PIPE COMP.	1		129	8488241600	• SCREW	4	
23	848JL058E1	SHAFT	1		130	T4960-53010	• SCREW TORX	1	
24	848JL05832	JOINT COMP.	1		131	3320-15310	• NUT	1	
29	848JL06100	GEARCASE ASSY	1		132	8488P00111	• CABLE COMP.	1	
30	06000-06001	• BEARING	1		133	8488M10060	• CORD COMP.	2	
31	06001-06001	• BEARING	1		134	8488H27501	• TUBE	1	
33	04065-02812	• RING	1		151	848JL092A2	BLADE	1	
34	8488AL3500	• SEAL	1		160	6220-17202	HARNES ASSY	1	
35	848JL061B4	• SHAFT	1		161	848JL092B1	COVER BLADE	1	
36	848JL061C2	• GEAR	1		162	8488U00001	TOOL SET	1	
37	T4950-60800	• BOLT TORX	1		163	T4017-91130	• SOCKET	1	
38	T4950-40800	• BOLT TORX	1		164	3540-91110	• BAR	1	
39	848JL061D3	• PINION	1		165	848JL06912	TAPHEAD ASSY	1	
40	06000-06000	• BEARING	1		166	-	• CASE	1	
41	06004-06202	• BEARING	1		167	T3189-15191	• EYELET	2	
43	04065-03515	• RING, SNAP	1		168	848JL069N0	• COVER	1	
44	3130-13270	• RING	1		169	T3189-15142	• CORD HOLDER	1	
45	T4950-63540	• BOLT TORX	1		170	T3189-15160	• SPRING	1	
46	848JL061F3	• HOLDER (A)	1		171	T3189-15180	• CORD	1	
47	848JL061L2	• PLATE	1		172	848JL066A4	GUARD	1	
48	848JL061G2	• HOLDER (B)	1		173	848JL06634	GURD ASSY	1	
49	848JL061K1	• NUT M12xP1.25	1		175	848JL066B2	• BLADE	1	
50	848JL061J3	• COVER	1		176	4820-72150	• BOLT TORX M4xL16 T27	1	
51	04065-01110	• SNAP RING	1		177	3238-13150	• NUT	1	
52	T1501-32120	• BOLT TORX M5xL12 T27	1		178	T4950-63040	BOLT TORX	2	
53	848JL066C2	PLATE	1						
70	848JL132K1	BRACKET-UP	1						
71	848JL132B2	BRACKET	1						
72	848JL132C2	HOLDER	2						
73	848JL132D1	HOLDER	2						
74	848JL132E2	CUSHION	6						
75	4820-13180	BOLT TORX M5xL20 T27	4						
76	T4950-52540	BOLT TORX	2						
77	848JL132L2	CLAMP	2						
80	848JL23812	HANGER ASSY	1						
		• HANGER	1						
		• CLAMP	1						
83	4820-13180	• BOLT TORX M5xL20 T27	1						
90	848JL190R1	PLATE NAME	1						
91	6425-12552	PLATE	1						
121	848JL03212	HANDLE COMP.	1						
122	848JL03313	GRIP ASSY	1						
123	848JL033A3	• BODY-R	1						
124	848JL033B4	• BODY-L	1						
125	848JL033C3	• LEVER	1						
126	848JL033D2	• SPRING	1						
127	848JL033E3	• LEVER-S	1						
128	T4506-52110	• SWITCH	1						

\* No.45 (1252-30635) might be changed to T4950-63540 in the future.

Fig.8 CUTTER GROUP

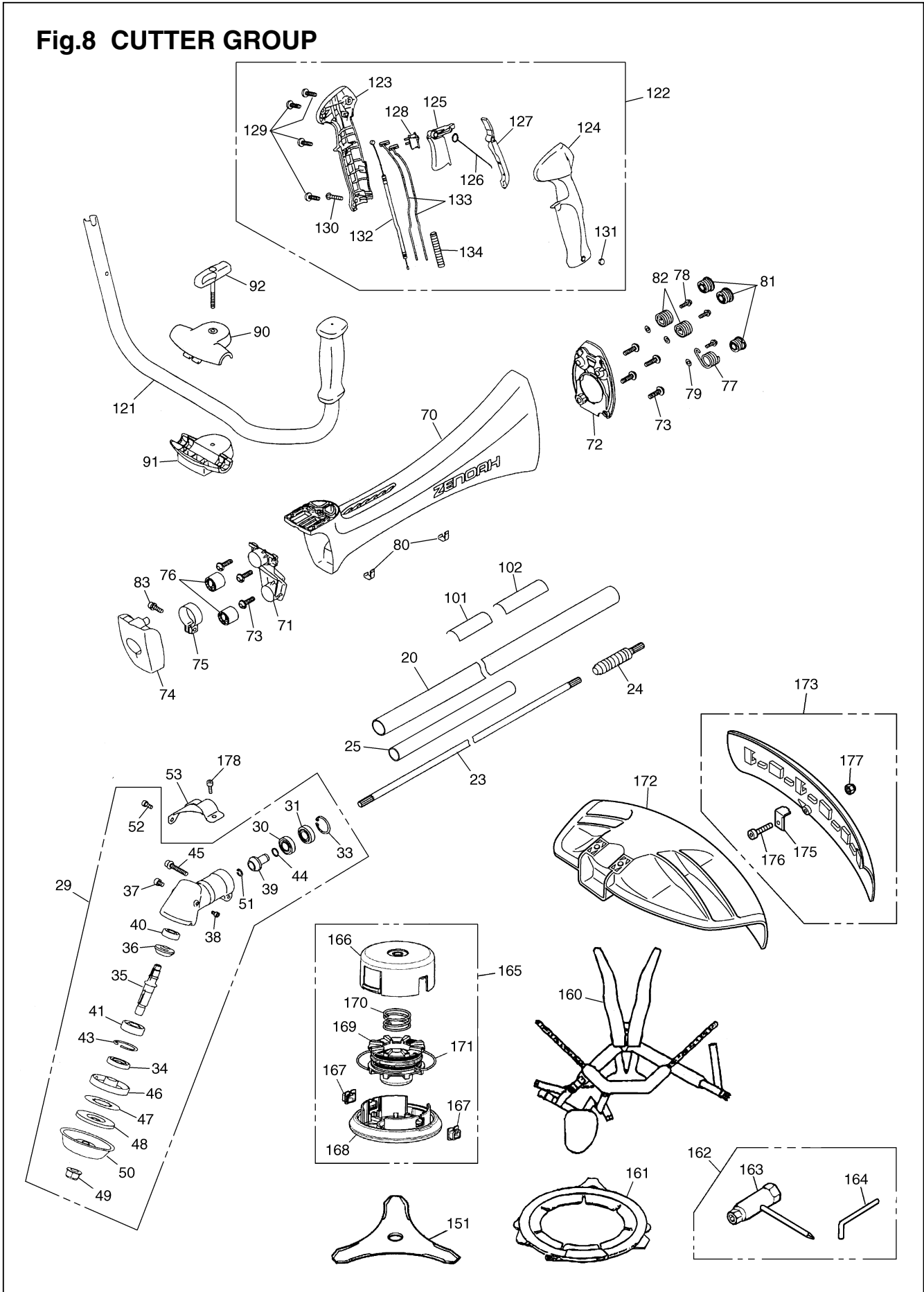




Fig.8 CUTTER GROUP

Key#	PART NUMBER	DESCRIPTION	Q'TY /UNIT	NOTE	Key#	PART NUMBER	DESCRIPTION	Q'TY /UNIT	NOTE
20	848JL05823	PIPE COMP.	1		124	848JL033B4	• BODY-L	1	
					125	848JL033C3	• LEVER	1	
					126	848JL033D2	• SPRING	1	
23	848JL058E1	SHAFT	1		127	848JL033E3	• LEVER-S	1	
24	848JL05832	JOINT COMP.	1		128	T4506-52110	• SWITCH	1	
25	848JL058F0	SLEEVE	1		129	8488241600	• SCREW	4	
29	848JL06100	GEARCASE ASSY	1		130	T4960-53010	• SCREW TORX	1	
30	06000-06001	• BEARING	1		131	3320-15310	• NUT	1	
31	06001-06001	• BEARING	1		132	8488P00111	• CABLE COMP.	1	
					133	8488M10060	• CORD COMP.	2	
33	04065-02812	• RING	1		134	8488H27501	• TUBE	1	
34	8488AL3500	• SEAL	1						
35	848JL061B4	• SHAFT	1		151	848JL092A2	BLADE	1	
36	848JL061C2	• GEAR	1						
37	T4950-60800	• BOLT TORX	1		160	848JL03611	HARNESS ASSY	1	
38	T4950-40800	• BOLT TORX	1		161	848JL092B1	COVER BLADE	1	
39	848JL061D3	• PINION	1		162	8488U00001	TOOL SET	1	
40	06000-06000	• BEARING	1		163	T4017-91130	• SOCKET	1	
41	06004-06202	• BEARING	1		164	3540-91110	• BAR	1	
					165	848JL06912	TAPHEAD ASSY	1	
43	04065-03515	• RING, SNAP	1		166	-	• CASE	1	
44	3130-13270	• RING	1		167	T3189-15191	• EYELET	2	
45	T4950-63540	• BOLT TORX	1		168	848JL069N0	• COVER	1	
46	848JL061F3	• HOLDER (A)	1		169	T3189-15142	• CORD HOLDER	1	
47	848JL061L2	• PLATE	1		170	T3189-15160	• SPRING	1	
48	848JL061G2	• HOLDER (B)	1		171	T3189-15180	• CORD	1	
49	848JL061K1	• NUT M12xP1.25	1		172	848JL066A4	GUARD	1	
50	848JL061J3	• COVER	1		173	848JL06634	GURD ASSY	1	
51	04065-01110	• SNAP RING	1						
52	T1501-32120	• BOLT TORX M5xL12 T27	1		175	848JL066B2	• BLADE	1	
53	848JL066C2	PLATE	1		176	4820-72150	• BOLT TORX M4xL16 T27	1	
					177	3238-13150	• NUT	1	
70	848JL031A3	FRAME	1		178	T4950-63040	BOLT TORX	2	
71	848JL031E2	BRACKET-F	1						
72	848JL031F3	BRACKET-L	1						
73	8488251601	SCREW TP5(P-tight)xL16 T27	7						
74	848JL031B3	HOLDER	1						
75	848JL031C2	BAND	1						
76	848JL031J3	ABSORBER	2						
77	848JL031N3	SPRING	1						
78	4820-85510	BOLT TORX M5xL16 T27	3						
79	01642-20508	WASHER	3						
80	848JL032L2	CLAMP	2						
81	848JL031K3	ABSORBER	3						
82	848JL031P3	SPRING	2						
83	T4950-62040	BOLT TORX	1						
90	848JL032C2	BRACKET-UP	1						
91	848JL032D2	BRACKET-LO	1						
92	848JL032G2	KNOB	1						
101	848JL090R1	PLATE NAME	1						
102	6425-12552	PLATE	1						
121	848JL03212	HANDLE COMP.	1						
122	848JL03313	GRIP ASSY	1						
123	848JL033A3	• BODY-R	1						

\* No.45 (1252-30635) might be changed to T4950-63540 in the future.

Fig.9 ENGINE GROUP

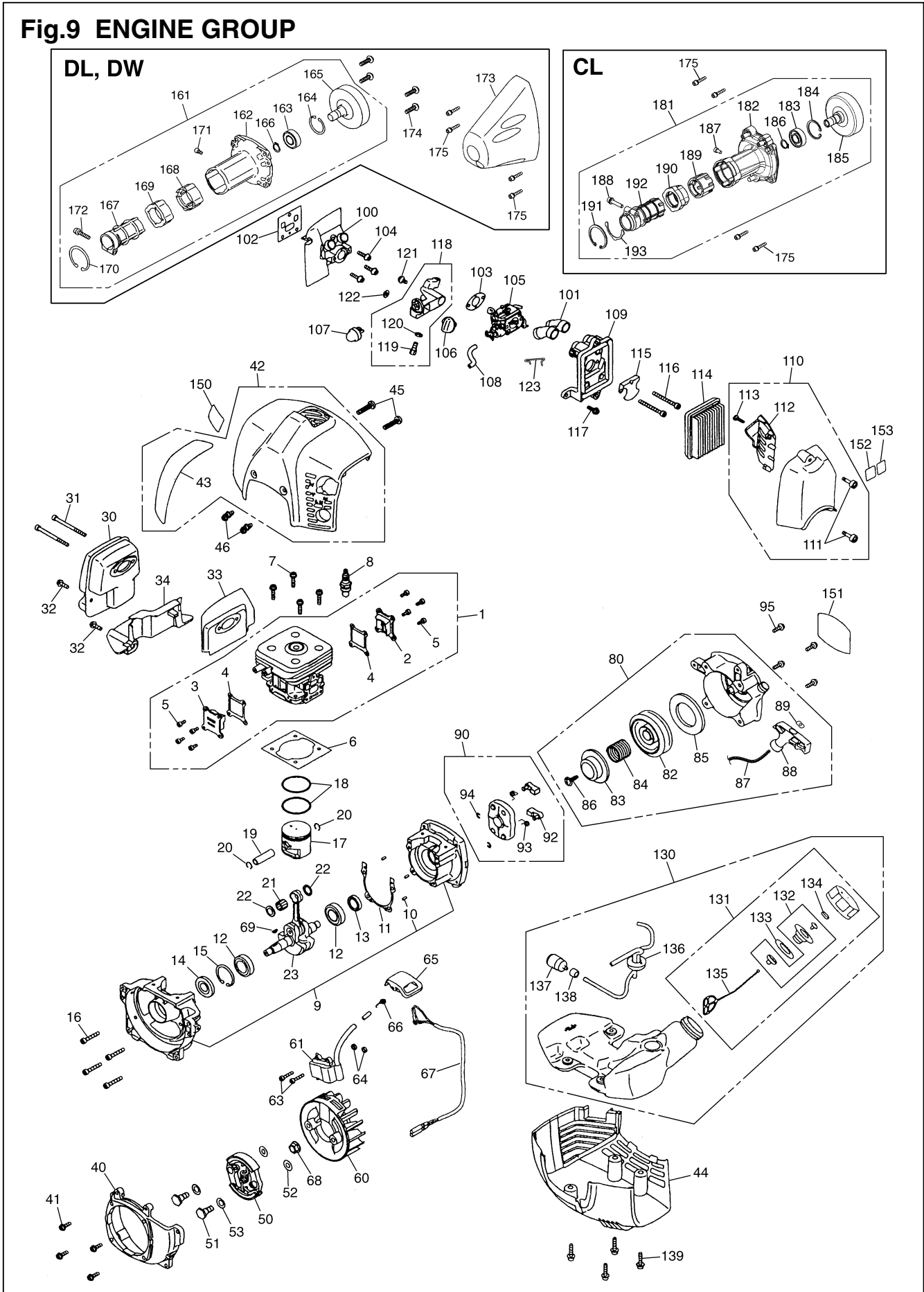
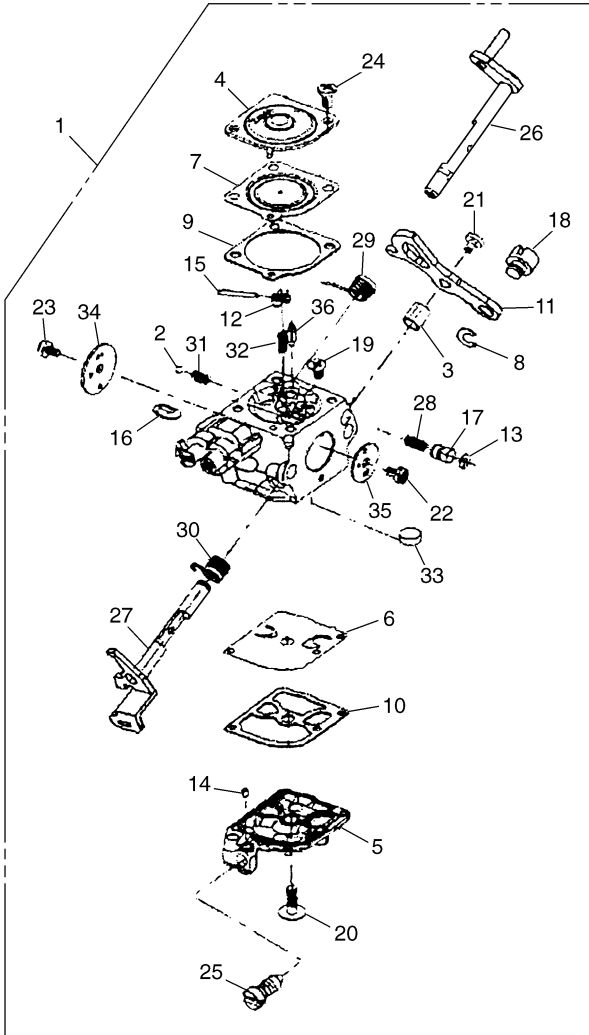


Fig.9 ENGINE GROUP

Key#	PART NUMBER	DESCRIPTION	Q'TY /UNIT	NOTE	Key#	PART NUMBER	DESCRIPTION	Q'TY /UNIT	NOTE
1	848H701211	CYLINDER COMP.	1		100	848H7014A2	INSULATOR	1	
2	848H7012C1	• COVER, TR, S	1		101	848H7082A1	PIPE	1	
3	848H7012D1	• COVER, TR, F	1		102	848H7014B1	GASKET	1	
4	848H7012E1	• GASKET, TR	2		103	848H7014C0	GASKET, CARB	1	
5	4820-16310	• BOLT TORX M4xL10 T27	8		104	T4950-52021	BOLT TORX M5xL20 T27	3	
6	848H7012B1	GASKET	1		105	848H708101	CARBURETOR ASSY	1	
7	4820-12130	BOLT TORX M5xL22 T27	4		106	848H7082F0	KNOB	1	
8	3699-91867	SPARK PLUG	1	CMR7H	107	2850-81900	PUMP	1	
9	848H702111	CRANKCASE COMP.	1		108	8488F40450	TUBE	1	
10	2629-21130	• PIN	3		109	848H708311	BODY ASSY	1	
11	T1400-21140	GASKET, CASE	1		110	848H708321	COVER ASSY	1	
12	84889F3511	BEARING	2		111	8488052011	• SCREW	2	
13	T4019-21210	SEAL	1		112	848H7083Y0	• GUARD	1	
14	1400-21220	SEAL	1		113	8488241600	• SCREW	1	
15	04065-03515	RING, SNAP	1		114	848H7083F1	ELEMENT	1	
16	4820-21310	BOLT TORX M5xL30 T27	4		115	T4012-82510	PLATE	1	
17	848H7041A2	PISTON	1		116	4820-15310	BOLT TORX M5xL50 T27	2	
18	T1400-41210	RING	2		117	4820-85510	BOLT TORX M5xL16 T27	1	
19	2880-41310	PIN	1		118	848H708220	BRACKET ASSY	1	
20	3350-41320	SNAP RING	2		119	T1600-13170	• SCREW	1	
21	1400-41410	BEARING	1		120	0282-10604	• NUT	1	
22	2670-41510	WASHER	2		121	T4950-51011	BOLT TORX M5xL10 T27	1	
23	848H704201	CRANKSHAFT COMP.	1		122	848H7083Z0	WASHER	1	
					123	848H7089C0	ROD	1	
30	848H7015A1	MUFFLER	1						
31	01252-30565	BOLT M5xL65	2		130	848H708502	TANK ASSY	1	
32	4820-85510	BOLT TORX M5xL16 T27	2		131	T1015-85202	• CAP ASSY	1	
33	848H7015C1	GASKET	1		132	4500-85300	•• HOLDER ASSY	1	
34	T1400-15220	PLATE	1		133	4500-85220	•• PACKING	1	
					134	5601-85260	•• FILTER	1	
40	848H7053A2	COVER	1		135	4820-85260	•• STOPPER	1	
41	4820-85510	BOLT TORX M5xL16 T27	4		136	848H708531	• PIPE COMP.	1	
42	848H703110	COVER-TOP ASSY	1		137	3302-85400	• FILTER	1	
43	848H7031E0	• TAPE	1		138	2841-31280	• COLLER	1	
44	848H7031N1	COVER-BOTTOM	1		139	8488153000	BOLT	4	
45	T4970-52000	SCREW TORX 5xL20	2		150	848H7090B1	LABEL, COVER	1	
46	T4950-51011	BOLT TORX M5xL10 T27	2		151	848H7090C1	LABEL, RECOIL	1	
					152	2634-31420	LABEL (CE)	1	
50	848H705110	SHOE COMP.	1		153	8488X01180	LABEL	1	
51	1200-51211	SCREW	2						
52	1200-51230	WASHER	2						
53	1200-51241	WASHER	2						
					161	848JL15302	HOUSING ASSY	1	DL, DW
60	848H707111	ROTOR	1		162	848JL153A2	• HOUSING	1	DL, DW
61	848H707121	COIL ASSY	1		163	06004-06202	• BEARING	1	DL, DW
					164	04065-03515	• RING, snap	1	DL, DW
63	T4950-42200	BOLT TORX M4xL22 T27	2		165	848JL051A1	• DRUM	1	DL, DW
64	1260-71261	SPACER	2		166	04064-01510	• SNAP RING	1	DL, DW
65	T1400-72110	CAP	1		167	848JL153B2	• CLAMP	1	DL, DW
66	1900-72120	SPRING	1		168	848JL153D2	• ABSORBER	1	DL, DW
67	T1400-73200	CORD COMP.	1		169	848JL153H2	• ABSORBER	1	DL, DW
68	1400-43230	NUT	1		170	04065-04718	• RING	1	DL, DW
69	1000-43240	KEY	1		171	4820-12350	• BOLT TORX M5xL10 T27	1	DL, DW
					172	T4950-63040	• BOLT TORX M6xL30 T27	1	DL, DW
80	848H707511	RECOIL ASSY	1		173	848JL153J2	COVER	1	DL, DW
					174	8488251601	SCREW TP5(P-tight)xL16 T27	4	DL, DW
82	848H7075C1	• REEL	1		175	T4950-62040	BOLT TORX M6xL20 T27	4	
83	848H7075L1	• PLATE, CAM	1						
84	848H7075K1	• SPRING, DAMPER	1		181	848JL05303	HOUSING ASSY	1	CL
85	848H7075B1	• SPRING, SPIRAL	1		182	848JL053A5	• HOUSING	1	CL
86	848H7075E1	• SCREW	1		183	06004-06202	• BEARING	1	CL
87	848H7075F1	• ROPE	1		184	04065-03515	• RING, SNAP	1	CL
88	848H7075J1	• KNOB	1		185	848JL051A1	• DRUM	1	CL
89	848H7075G1	• STOPPER	1		186	04064-01510	• SNAP RING	1	CL
90	848H707521	PULLEY ASSY	1		187	4820-12350	• BOLT TORX M5xL10 T27	1	CL
					188	T4950-53040	• BOLT TORX M5xL30 T27	1	CL
92	848H7075R1	• RATCHET	2		189	848JL053D1	• ABSORBER	1	CL
93	848H7075S0	• SPRING	2		190	848JL053H0	• ABSORBER	1	CL
94	1034-72180	• E RING	2		191	04065-04518	• RING	1	CL
95	4820-32120	BOLT TORX	4		192	848JL053B1	• CLAMP	1	CL
					193	848JL053Y0	• SPACER	1	CL

BCZ5000DL/BCZ5000DW/BCZ5000CL

Fig.10 CARBURETOR



Key#	PART NUMBER	DESCRIPTION	Q'TY /UNIT	NOTE
1	848H708101	CARBURETOR ASSY	1	C10-Z4
2	848H7080Y0	• BALL	1	
3	848H7081S0	• COLLAR	1	
4	848C5081G0	• COVER, METERING	1	
5	848C5081H0	• COVER, PUMP	1	
6	848H7081M0	• DIAPHRAGM, PUMP	1	
7	848C5081K0	• DIAPHRAGM ASSY, METERING	1	
8	848H7089A0	• E-RING	1	
9	848C5081L0	• GASKET, METERING CHAMBER	1	
10	848C5081N0	• GASKET, PUMP	1	
11	848H7081Z0	• LEVER, THROTTLE	1	
12	848C5081F0	• LEVER, METERING	1	
13	848C5080P0	• O-RING	1	
14	848C5081Y0	• PIECE, FRICTION	1	
15	848C5081E0	• PIN	1	
16	848C5081J0	• PLUG, WELCH	1	
17	848C5080N0	• PLUNGER	1	
18	848H7089B0	• POST	1	
19	848C5081D0	• SCREW	1	
20	848C5081P0	• SCREW	1	
21	848C5080R0	• SCREW	1	
22	848H7081W0	• SCREW	1	
23	848C5081W0	• SCREW	1	
24	848C5080B0	• SCREW (WITH SEPRATION)	2	
25	848H7081X0	• SCREW, THROTTLE ADJUST	1	
26	848H7080E0	• SHAFT ASSY, CHOKE	1	
27	848H7081T0	• SHAFT ASSY, THROTTLE	1	
28	848C5080M0	• SPRING	1	
29	848H7080D0	• SPRING, CHOKE RETURN	1	
30	848H7081R0	• SPRING, THROTTLE RETURN	1	
31	848H7080Z0	• SPRING, FRICTION	1	
32	848H7081C0	• SPRING, METERING LEVER	1	
33	848C5081A0	• STRAINER	1	
34	848H7080C0	• VALVE, CHOKE	1	
35	848H7081U0	• VALVE, THROTTLE	1	
36	848C5081B0	• VALVE, INLET NEEDLE	1	
37	848H700630	REBUILD KIT	1	
38	848H700620	• GASKET & DIAPHRAGM KIT	1	





# **KOMATSU ZENOAHI CO.**

1-9 Minamidai, Kawagoe, Saitama, 350-1192 Japan

---

PRINTED IN JAPAN

PRINTED ON RECYCLED PAPER  
IMPRIMÉ SUR PAPIER RECYCLÉ  
GEDRUCKT AUF RECYCLING PAPIER  
STAMPATO SU CARTA RICICLATA  
IMPRESO EN PAPEL RECICLADO