

# PARTS LIST

## BRUSHCUTTERS

**BCZ3205DL**  
**BCZ3205DW**

**NOTE :**

1. Use ZENOAH genuine parts as specified in the parts list for repair and/or replacement.
2. ZENOAH does not warrant the machines, which have been damaged by the use of any parts other than those specified by the company.
3. When placing parts orders for repair and/or replacement, check if the model name and the serial number are applicable to those specified in the parts list, then use parts number described in the parts list.
4. The contents described in the parts list are accurate as of the date and may change due to improvement.
5. The parts for the machine shall be supplied ten (10) years after the machine is discontinued. [It is possible that some specific parts may be subject to change of their delivery term and list price within the limit of ten (10) years after the machine is discontinued. It is also possible that some parts may be available even after the limit of ten (10) years.]

APPLICABLE SERIAL NUMBERS:

90100001 and up

January 2009

Fig.1 CUTTER GROUP

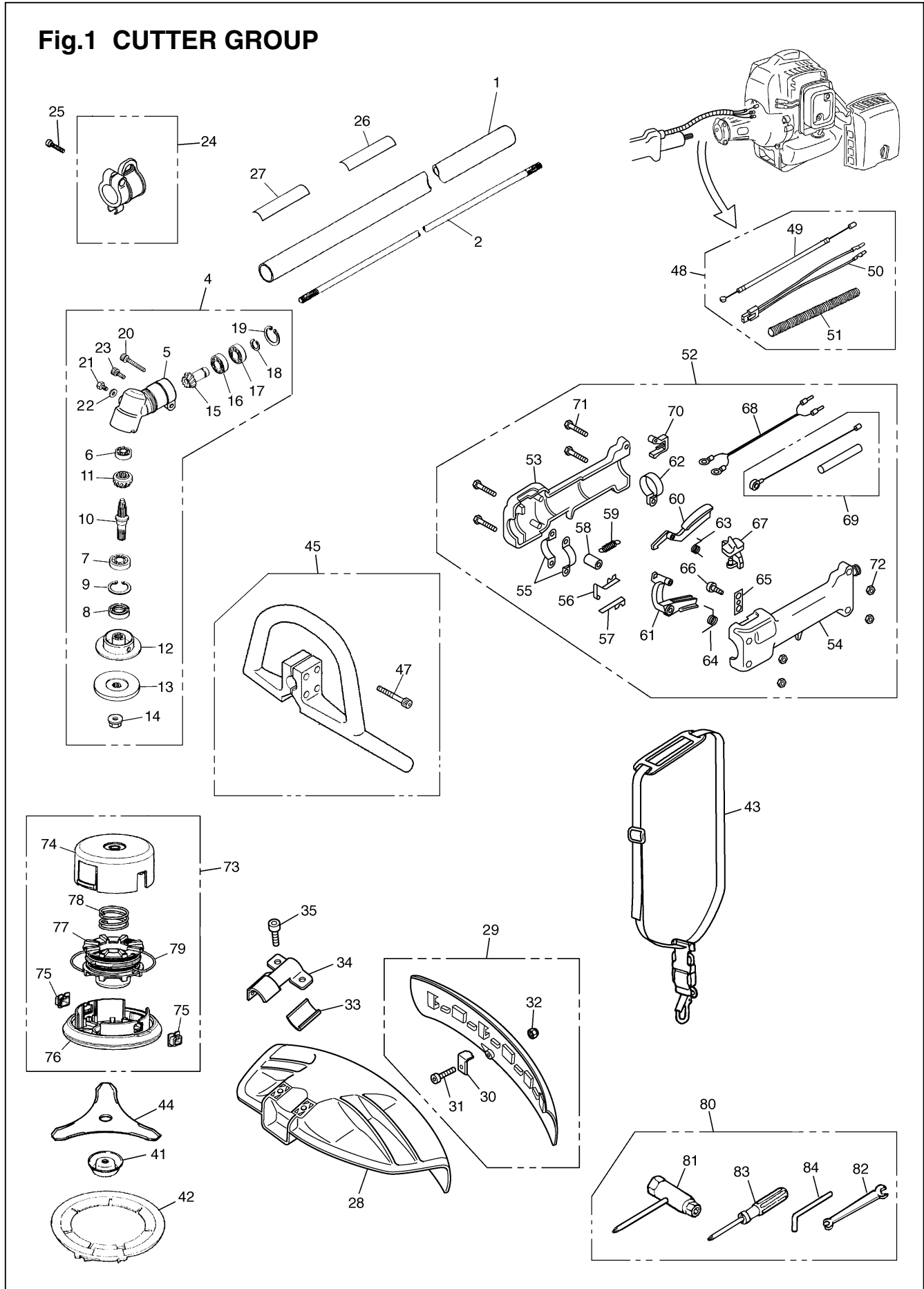


Fig.1 CUTTER GROUP

| Key# | PART NUMBER  | DESCRIPTION                   | Q'TY /UNIT | NOTE   | Key# | PART NUMBER    | DESCRIPTION       | Q'TY /UNIT | NOTE |
|------|--------------|-------------------------------|------------|--------|------|----------------|-------------------|------------|------|
| 1    | 848B5F5821   | PIPE COMP. 1500x24xT1.5       | 1          |        | 57   | K3300-000020   | • PLATE (B)       | 1          |      |
| 2    | 3520-12213   | SHAFT, spline $\phi$ 7x7teeth | 1          | 1470x7 | 58   | K5100-000240   | • COLLAR          | 1          |      |
| 4    | 848JCW6100   | GEARCASE ASSY                 | 1          |        | 59   | K5100-000220   | • SPRING          | 1          |      |
| 5    | 6440-13123   | • GEARCASE                    | 1          |        | 60   | K2300-000260   | • SAFETY LEVER    | 1          |      |
| 6    | 06000-00626  | • BEARING                     | 1          |        | 61   | K2300-000250   | • THROTTLE LEVER  | 1          |      |
| 7    | 06000-06000  | • BEARING                     | 1          |        | 62   | K3200-000380   | • CLAMP (B)       | 1          |      |
| 8    | 3565-13130   | • SEAL                        | 1          |        | 63   | K5100-000230   | • SPRING          | 1          |      |
| 9    | 04065-02612  | • SNAPRING                    | 1          |        | 64   | K5100-000210   | • SPRING          | 1          |      |
| 10   | T3002-13210  | • SHAFT                       | 1          |        | 65   | K2300-000270   | • PLATE           | 1          |      |
| 11   | T3317-13220  | • GEAR                        | 1          |        | 66   | B1122-C2910H   | • SCREW           | 1          |      |
| 12   | 6440-13242   | • HOLDER (A)                  | 1          |        | 67   | K2300-000280   | • SWITCH          | 1          |      |
| 13   | 6423-13250   | • HOLDER (B)                  | 1          |        | 68   | K5200-000090   | • CORD            | 1          |      |
| 14   | T3002-13260  | • NUT                         | 1          |        | 69   | K5100-000270   | • CABLE COMP.     | 1          |      |
| 15   | 848JC061D0   | • PINION                      | 1          |        |      | _____          | •• THROTTLE CABLE | 1          |      |
| 16   | 06000-00609  | • BEARING                     | 1          |        |      | _____          | •• SLEEVE         | 1          |      |
| 17   | 06001-00609  | • BEARING                     | 1          |        | 70   | K2300-000390   | • LID             | 1          |      |
| 18   | T3300-13330  | • SNAPRING                    | 1          |        | 71   | B1176-090530   | • SCREW           | 4          |      |
| 19   | 04065-02412  | • RING                        | 1          |        | 72   | B1181-04054506 | • NUT             | 4          |      |
| 20   | T4950-53040  | • BOLT TORX                   | 1          | M5x30  | 73   | T3189-15102    | TAP HEAD COMP.    | 1          |      |
| 21   | T4950-60800  | • BOLT TORX                   | 1          | M6x8   | 74   | T3189-15112    | • CASE            | 1          |      |
| 22   | 01641-20608  | • WASHER                      | 1          |        | 75   | T3189-15191    | • EYELET          | 2          |      |
| 23   | T4950-51200  | • BOLT TORX                   | 1          | M5x12  | 76   | T3189-15132    | • COVER           | 1          |      |
| 24   | T3300-17202  | HANGER COMP.                  | 1          |        | 77   | T3189-15142    | • CORD HOLDER     | 1          |      |
| 25   | 0263-90520   | SCREW                         | 1          |        | 78   | T3189-15160    | • SPRING          | 1          |      |
| 26   | 848JCW90R1   | PLATE NAME                    | 1          |        | 79   | T3189-15180    | • CORD            | 1          |      |
| 27   | 8488X10020   | PLATE CAUTION                 | 1          |        | 80   | 8488U00070     | TOOL SET          | 1          |      |
| 28   | 848JL066A5   | GUARD                         | 1          |        | 81   | 8488U10040     | • SOCKET          | 1          |      |
| 29   | 848JL06635   | GUARD ASSY                    | 1          |        | 82   | 3540-91120     | • SPANNER         | 1          |      |
| 30   | 848JL066B2   | • BLADE                       | 1          |        | 83   | 1030-91340     | • DRIVER          | 1          |      |
| 31   | 4820-72150   | • BOLT TORX                   | 1          | M4x16  | 84   | 3540-91110     | • BAR             | 1          |      |
| 32   | 3238-13150   | • NUT                         | 1          | M4     |      |                |                   |            |      |
| 33   | 3550-14170   | SPACER                        | 1          |        |      |                |                   |            |      |
| 34   | 848JC266C0   | BRACKET                       | 1          |        |      |                |                   |            |      |
| 35   | T4950-63040  | BOLT TORX                     | 2          | M6x30  |      |                |                   |            |      |
| 41   | 3540-13283   | COVER (NUT)                   | 1          |        |      |                |                   |            |      |
| 42   | 6251-15910   | COVER (BLADE)                 | 1          |        |      |                |                   |            |      |
| 43   | 848J823610   | STRAP ASSY                    | 1          |        |      |                |                   |            |      |
| 44   | 6298-E3390   | BLADE                         | 1          |        |      |                |                   |            |      |
| 45   | T3110-14000  | HANDLE ASSY                   | 1          |        |      |                |                   |            |      |
| 47   | 0263-90530   | • SCREW                       | 4          |        |      |                |                   |            |      |
| 48   | T1504-83000  | CABLE ASSY                    | 1          |        |      |                |                   |            |      |
| 49   | T1504-83100  | • CABLE COMP.                 | 1          |        |      |                |                   |            |      |
| 50   | T3037-14520  | • CORD COMP.                  | 1          |        |      |                |                   |            |      |
| 51   | 6420-14511   | • TUBE                        | 1          |        |      |                |                   |            |      |
| 52   | T3110-18000  | GRIP ASSY                     | 1          |        |      |                |                   |            |      |
| 53   | K2300-000240 | • GRIP (R)                    | 1          |        |      |                |                   |            |      |
| 54   | K2300-000230 | • GRIP (L)                    | 1          |        |      |                |                   |            |      |
| 55   | K3200-000370 | • CLAMP (A)                   | 2          |        |      |                |                   |            |      |
| 56   | K3300-000010 | • PLATE (A)                   | 1          |        |      |                |                   |            |      |

Fig.2 CUTTER GROUP

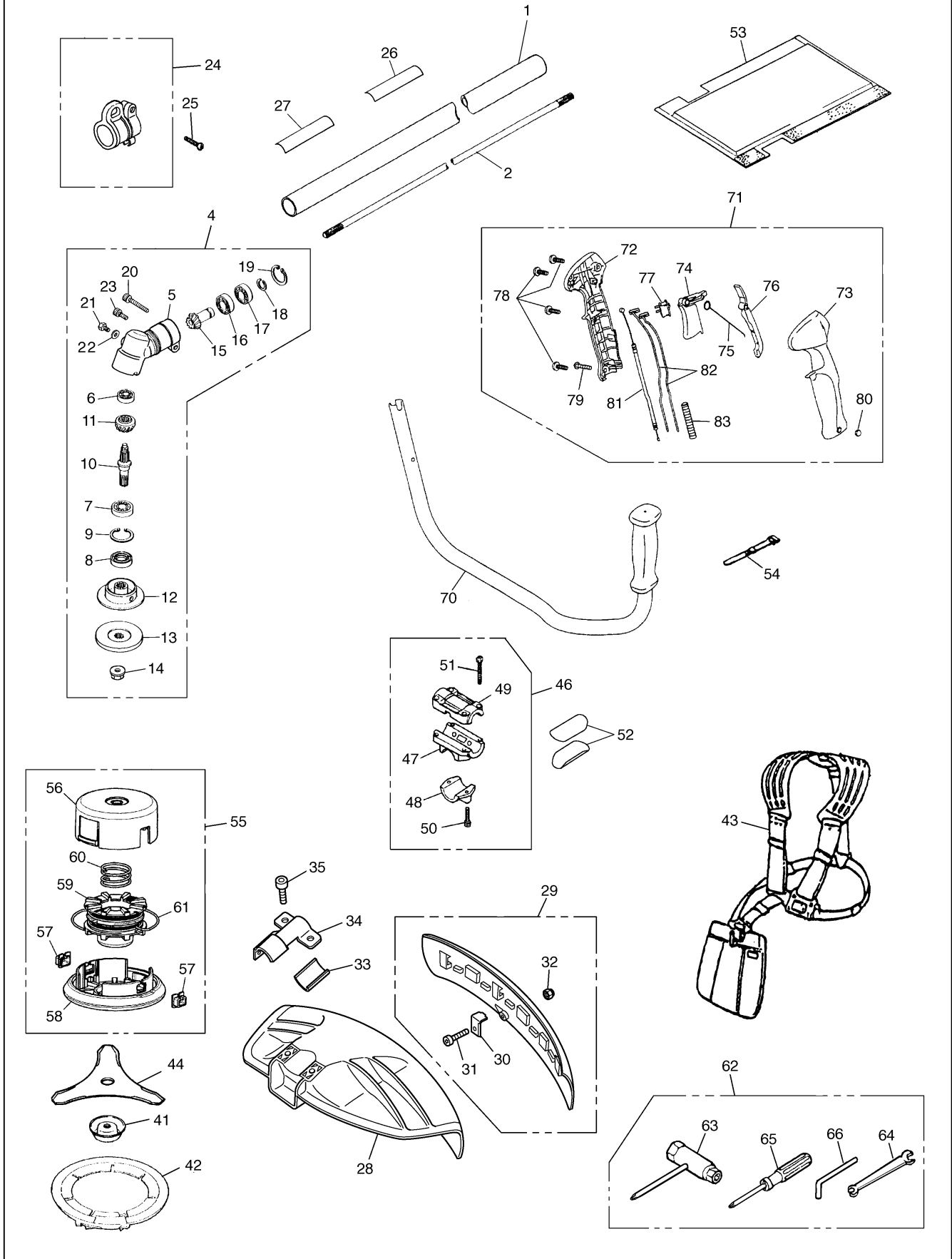


Fig.2 CUTTER GROUP

| Key# | PART NUMBER | DESCRIPTION                   | Q'TY /UNIT | NOTE   | Key# | PART NUMBER | DESCRIPTION   | Q'TY /UNIT | NOTE |
|------|-------------|-------------------------------|------------|--------|------|-------------|---------------|------------|------|
| 1    | 848B5F5821  | PIPE COMP. 1500x24xT1.5       | 1          |        | 57   | T3189-15191 | • EYELET      | 2          |      |
| 2    | 3520-12213  | SHAFT, spline $\phi$ 7x7teeth | 1          | 1470x7 | 58   | T3189-15132 | • COVER       | 1          |      |
| 4    | 848JCW6100  | GEARCASE ASSY                 | 1          |        | 59   | T3189-15142 | • CORD HOLDER | 1          |      |
| 5    | 6440-13123  | • GEARCASE                    | 1          |        | 60   | T3189-15160 | • SPRING      | 1          |      |
| 6    | 06000-00626 | • BEARING                     | 1          |        | 61   | T3189-15180 | • CORD        | 1          |      |
| 7    | 06000-06000 | • BEARING                     | 1          |        | 62   | 8488U00070  | TOOL-SET      | 1          |      |
| 8    | 3565-13130  | • SEAL                        | 1          |        | 63   | 8488U10040  | • SOCKET      | 1          |      |
| 9    | 04065-02612 | • SNAPRING                    | 1          |        | 64   | 3540-91120  | • SPANNER     | 1          |      |
| 10   | T3002-13210 | • SHAFT                       | 1          |        | 65   | 1030-91340  | • DRIVER      | 1          |      |
| 11   | T3317-13220 | • GEAR                        | 1          |        | 66   | 3540-91110  | • BAR         | 1          |      |
| 12   | 6440-13242  | • HOLDER (A)                  | 1          |        | 70   | 848JL03212  | HANDLE COMP.  | 1          |      |
| 13   | 6019-13250  | • HOLDER (B)                  | 1          |        | 71   | 848JCH3320  | GRIP ASSY     | 1          |      |
| 14   | T3002-13260 | • NUT                         | 1          |        | 72   | 848JL033A3  | • BODY-R      | 1          |      |
| 15   | 848JC061D0  | • PINION                      | 1          |        | 73   | 848JL033B4  | • BODY-L      | 1          |      |
| 16   | 06000-00609 | • BEARING                     | 1          |        | 74   | 848JL033C3  | • LEVER       | 1          |      |
| 17   | 06001-00609 | • BEARING                     | 1          |        | 75   | 848JL033D2  | • SPRING      | 1          |      |
| 18   | T3300-13330 | • SNAPRING                    | 1          |        | 76   | 848JL033E3  | • LEVER-S     | 1          |      |
| 19   | 04065-02412 | • RING                        | 1          |        | 77   | T4506-52110 | • SWITCH      | 1          |      |
| 20   | T4950-53040 | • BOLT TORX                   | 1          | M5x30  | 78   | 8488241600  | • SCREW       | 4          |      |
| 21   | T4950-60800 | • BOLT TORX                   | 1          | M6x8   | 79   | T4960-53010 | • SCREW TORX  | 1          |      |
| 22   | 01641-20608 | • WASHER                      | 1          |        | 80   | 3320-15310  | • NUT         | 1          |      |
| 23   | T4950-51200 | • BOLT TORX                   | 1          | M5x12  | 81   | 8488P00320  | • CABLE COMP. | 1          |      |
| 24   | T3300-17202 | HANGER COMP.                  | 1          |        | 82   | 8488M10450  | • CORD COMP.  | 2          |      |
| 25   | 0263-90520  | SCREW                         | 1          |        | 83   | T3004-14810 | • TUBE        | 1          |      |
| 26   | 848JCW90R1  | PLATE NAME                    | 1          |        |      |             |               |            |      |
| 27   | 6425-12552  | PLATE CAUTION                 | 1          |        |      |             |               |            |      |
| 28   | 848JL066A5  | GUARD                         | 1          |        |      |             |               |            |      |
| 29   | 848JL06635  | GUARD ASSY                    | 1          |        |      |             |               |            |      |
| 30   | 848JL066B2  | • BLADE                       | 1          |        |      |             |               |            |      |
| 31   | 4820-72150  | • BOLT TORX                   | 1          | M4x16  |      |             |               |            |      |
| 32   | 3238-13150  | • NUT                         | 1          | M4     |      |             |               |            |      |
| 33   | 3550-14170  | SPACER                        | 1          |        |      |             |               |            |      |
| 34   | 848JC266C0  | BRACKET                       | 1          |        |      |             |               |            |      |
| 35   | T4950-63040 | BOLT TORX                     | 2          | M6x30  |      |             |               |            |      |
| 41   | 3540-13283  | COVER (NUT)                   | 1          |        |      |             |               |            |      |
| 42   | 6251-15910  | COVER (BLADE)                 | 1          |        |      |             |               |            |      |
| 43   | 6220-17202  | STRAP ASSY                    | 1          |        |      |             |               |            |      |
| 44   | 6298-E3390  | BLADE                         | 1          |        |      |             |               |            |      |
| 46   | 848JG03230  | BRACKET ASSY                  | 1          |        |      |             |               |            |      |
| 47   | 848JG032B1  | • BRACKET                     | 1          |        |      |             |               |            |      |
| 48   | 3541-14182  | • CAP-L                       | 1          |        |      |             |               |            |      |
| 49   | 848JL132K1  | • BRACKET-UP                  | 1          |        |      |             |               |            |      |
| 50   | 4820-13180  | • BOLT                        | 2          |        |      |             |               |            |      |
| 51   | T4950-52540 | • BOLT                        | 4          |        |      |             |               |            |      |
| 52   | T3300-14191 | PLATE                         | 2          |        |      |             |               |            |      |
| 53   | 4050-17110  | PROTECTOR                     | 1          |        |      |             |               |            |      |
| 54   | 3540-93120  | BAND                          | 1          |        |      |             |               |            |      |
| 55   | T3189-15102 | TAP HEAD COMP.                | 1          |        |      |             |               |            |      |
| 56   | T3189-15112 | • CASE                        | 1          |        |      |             |               |            |      |

Fig.3 ENGINE GROUP

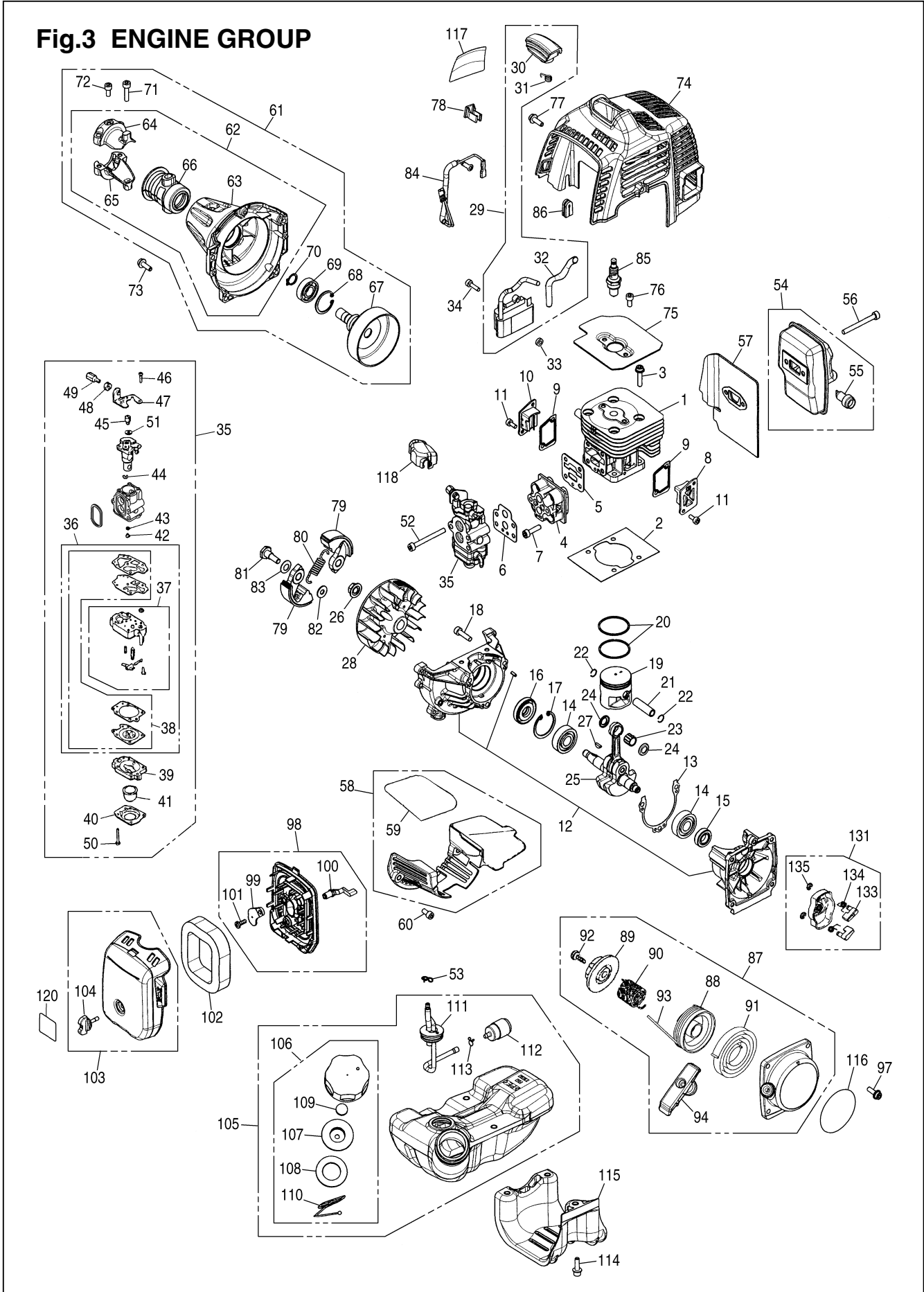


Fig.3 ENGINE GROUP

| Key# | PART NUMBER | DESCRIPTION       | Q'TY /UNIT | NOTE  | Key# | PART NUMBER | DESCRIPTION             | Q'TY /UNIT | NOTE  |
|------|-------------|-------------------|------------|-------|------|-------------|-------------------------|------------|-------|
| 1    | 848F7012A0  | CYLINDER          | 1          |       | 64   | T1700-31212 | •• BRACKET (A)          | 1          |       |
| 2    | T1590-12210 | GASKET, base      | 1          |       | 65   | T1700-31221 | •• BRACKET (B)          | 1          |       |
| 3    | 4820-12130  | BOLT TORX         | 4          | M5x22 | 66   | T1700-31232 | •• CUSHION              | 1          |       |
| 4    | 848F7014A0  | INSULATOR         | 1          |       | 67   | 848F3051A1  | • DRUM                  | 1          |       |
| 5    | 848F6014B2  | GASKET, insu      | 1          |       | 68   | 04065-02812 | • SNAP RING             | 1          |       |
| 6    | T1590-13130 | GASKET, carb      | 1          |       | 69   | T1701-31150 | • BEARING               | 1          |       |
| 7    | T4950-52021 | BOLT TORX         | 4          | M5x20 | 70   | 04064-01210 | • SNAP RING             | 1          |       |
| 8    | 848F6012C1  | COVER, trs        | 1          |       | 71   | 4820-13180  | • BOLT TORX             | 2          | M5x20 |
| 9    | 848F6012E1  | GASKET, tr        | 2          |       | 72   | 4820-12350  | • BOLT TORX             | 1          | M5x10 |
| 10   | 848F6012D2  | COVER, trf        | 1          |       | 73   | 4820-85510  | BOLT TORX               | 4          | M5x16 |
| 11   | 4820-16310  | BOLT TORX         | 4          | M4x10 | 74   | 848F6031A1  | COVER, engine           | 1          |       |
| 12   | 848F602111  | CRANKCASE COMP.   | 1          |       | 75   | 848F6012G2  | PLATE, cyl              | 1          |       |
| 13   | 848F6021D1  | GASKET, case      | 1          |       | 76   | 4820-12350  | BOLT TORX               | 2          | M5x10 |
| 14   | 84889C3200  | BEARING           | 2          |       | 77   | 4820-32120  | BOLT TORX               | 2          | M5x16 |
| 15   | 4810-21210  | SEAL              | 1          |       | 78   | T1600-72210 | CLAMP                   | 1          |       |
| 16   | 1650-21220  | SEAL              | 1          |       | 79   | 4820-51110  | SHOE                    | 2          |       |
| 17   | 04065-03212 | SNAP RING         | 2          |       | 80   | 4820-51220  | SPRING                  | 1          |       |
| 18   | 4820-13180  | BOLT TORX         | 3          | M5x20 | 81   | 1140-51250  | SCREW                   | 2          |       |
| 19   | 848F7041A0  | PISTON            | 1          |       | 82   | 1140-51230  | WASHER                  | 2          |       |
| 20   | T1590-41210 | RING              | 2          |       | 83   | 1140-51242  | WASHER, wave            | 2          |       |
| 21   | T2200-41310 | PIN               | 1          |       | 84   | T1551-73200 | CORD COMP.              | 1          |       |
| 22   | 3310-41320  | SNAP RING         | 2          |       | 85   | 848F7071T0  | SPARK PLUG NGK CMR7H-10 | 1          |       |
| 23   | 3310-41410  | BEARING           | 1          |       | 86   | 4810-72120  | GROMMET                 | 1          |       |
| 24   | 1650-41510  | WASHER            | 2          |       | 87   | 848F687510  | RECOIL ASSY             | 1          |       |
| 25   | 848F604201  | CRANKSHAFT COMP.  | 1          |       | 88   | 848F6875C0  | • REEL                  | 1          |       |
| 26   | 1650-43230  | NUT               | 1          |       | 89   | 848F6875L0  | • PLATE, cam            | 1          |       |
| 27   | 1000-43240  | KEY               | 1          |       | 90   | 848F6875K0  | • SPRING, damper        | 1          |       |
| 28   | T1700-71110 | ROTOR             | 1          |       | 91   | 848F6875B0  | • SPRING, spiral        | 1          |       |
| 29   | T1590-71200 | COIL ASSY         | 1          |       | 92   | 4500-75150  | • SCREW                 | 1          |       |
| 30   | 848P3071C2  | • CAP             | 1          |       | 93   | 848F6875F0  | • ROPE                  | 1          |       |
| 31   | T1108-72120 | • SPRING          | 1          |       | 94   | 3330-75421  | • KNOB                  | 1          |       |
| 32   | 2850-71320  | • TUBE            | 1          |       |      |             |                         |            |       |
| 33   | 1260-71261  | SPACER            | 2          |       | 97   | 4820-32120  | BOLT TORX               | 4          | M5x16 |
| 34   | 4820-72150  | BOLT TORX         | 2          | M4x16 | 98   | 848F008310  | BODY ASSY               | 1          |       |
| 35   | 848F728100  | CARBURETOR ASSY   | 1          |       | 99   | T1512-82130 | • PLATE, choke          | 1          |       |
| 36   | 848F600630  | • REBUILD KIT     | 1          |       | 100  | T1600-82140 | • LEVER                 | 1          |       |
| 37   | 1850-81450  | •• BODY ASSY      | 1          |       | 101  | T1108-82190 | • SCREW                 | 1          |       |
| 38   | 4810-06021  | •• GASKET KIT     | 1          |       | 102  | T1551-82170 | ELEMENT                 | 1          |       |
| 39   | 1850-81490  | • BODY, purge     | 1          |       | 103  | 848F628320  | COVER ASSY              | 1          |       |
| 40   | 1850-81520  | • COVER, pump     | 1          |       | 104  | T1108-82220 | • KNOB                  | 1          |       |
| 41   | 1751-81510  | • PUMP, priming   | 1          |       | 105  | 848F608502  | TANK ASSY               | 1          |       |
| 42   | 8488J14150  | • JET             | 1          |       | 106  | T1015-85202 | • CAP ASSY              | 1          |       |
| 43   | 1751-81240  | • O-RING          | 1          |       | 107  | 4500-85300  | •• HOLDER ASSY          | 1          |       |
| 44   | 1751-81130  | • RING            | 1          |       | 108  | 4500-85220  | •• PACKING              | 1          |       |
| 45   | 1881-81140  | • SWIVEL          | 1          |       | 109  | 5601-85260  | •• FILTER               | 1          |       |
| 46   | 1752-81110  | • SCREW           | 2          |       | 110  | 4820-85260  | •• STOPPER              | 1          |       |
| 47   | 5500-81120  | • BRACKET         | 1          |       | 111  | 848F608530  | • PIPE COMP.            | 1          |       |
| 48   | 1751-81180  | • NUT, adjuster   | 1          |       | 112  | 3302-85400  | • FILTER ASSY           | 1          |       |
| 49   | 8488361200  | • SCREW, adjuster | 1          |       | 113  | 1260-85460  | • CLIP                  | 1          |       |
| 50   | 1850-81530  | • SCREW           | 4          |       | 114  | T4950-52030 | BOLT TORX               | 3          | M5x20 |
| 51   | 5500-81160  | • WASHER          | 1          |       | 115  | 848F6085Z0  | GUARD, tank             | 1          |       |
| 52   | 4820-15310  | BOLT TORX         | 2          | M5x50 | 116  | 848F6190C0  | LABEL, recoil           | 1          |       |
| 53   | 1950-86120  | CLIP              | 1          |       | 117  | 848F6190B0  | LABEL                   | 1          |       |
| 54   | 848F671511  | MUFFLER ASSY      | 1          |       | 118  | 4500-81910  | COVER                   | 1          |       |
| 55   | 4810-15140  | • ARRESTER        | 1          |       |      |             |                         |            |       |
| 56   | 4820-15310  | BOLT TORX         | 2          | M5x50 | 120  | 8488X01160  | LABEL (116dB)           | 1          |       |
| 57   | 848F6015C1  | GASKET, muff      | 1          |       |      |             |                         |            |       |
| 58   | 848F601530  | PLATE ASSY        | 1          |       | 131  | 848F687520  | PULLEY ASSY             | 1          |       |
| 59   | 848F6015F0  | • SHEET           | 1          |       |      |             |                         |            |       |
| 60   | 4820-12350  | BOLT TORX         | 2          | M5x10 | 133  | 848F6875R0  | • RATCHET               | 2          |       |
| 61   | 848F606302  | HOUSING ASSY      | 1          |       | 134  | 848F6875S0  | • SPRING                | 2          |       |
| 62   | T1590-31100 | • HOUSING COMP.   | 1          |       | 135  | 1034-72180  | • E-RING                | 2          |       |
| 63   | T1590-31110 | •• HOUSING        | 1          |       |      |             |                         |            |       |