



PARTS LIST

BRUSHCUTTERS

BCZ2610DL

NOTE :

1. Use ZENOAH genuine parts as specified in the parts list for repair and/or replacement.
2. ZENOAH does not warrant the machines, which have been damaged by the use of any parts other than those specified by the company.
3. When placing parts orders for repair and/or replacement, check if the model name and the serial number are applicable to those specified in the parts list, then use parts number described in the parts list.
4. The contents described in the parts list are accurate as of the date and may change due to improvement.
5. The parts for the machine shall be supplied ten (10) years after the machine is discontinued. [It is possible that some specific parts may be subject to change of their delivery term and list price within the limit of ten (10) years after the machine is discontinued. It is also possible that some parts may be available even after the limit of ten (10) years.]

APPLICABLE SERIAL NUMBERS:

80200001 and up

May 2008

Fig.1 CUTTER GROUP

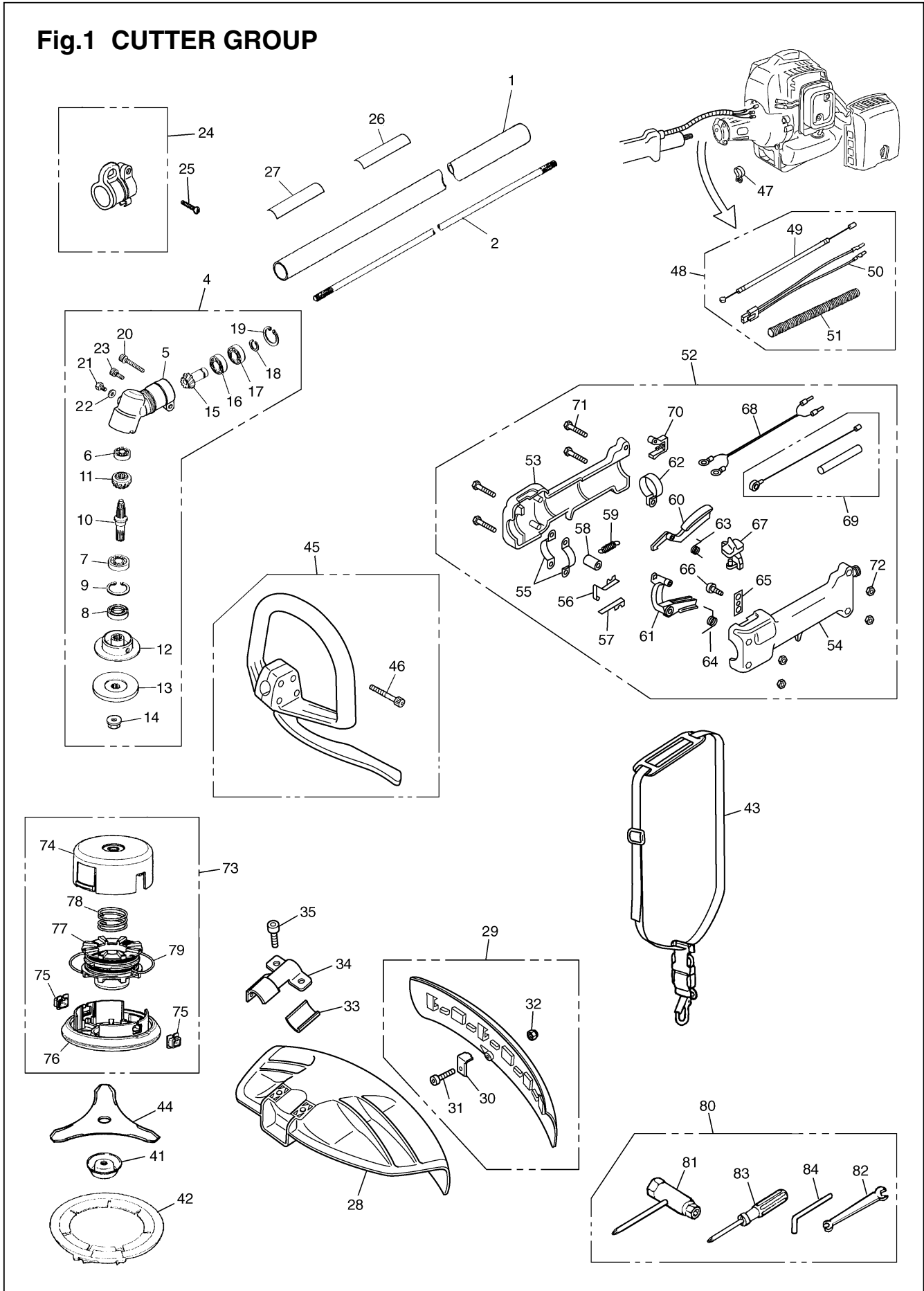


Fig.1 CUTTER GROUP

Key#	PART NUMBER	DESCRIPTION	Q'TY /UNIT	NOTE	Key#	PART NUMBER	DESCRIPTION	QTY /UNIT	NOTE
1	848B5F5821	PIPE COMP. 1500x24xT1.5	1		57	K3300-000020	• PLATE (B)	1	
2	3520-12213	SHAFT, spline ø7x7teeth	1	1470x7	58	K5100-000240	• COLLAR	1	
4	848JC86100	GEARCASE ASSY	1		59	K5100-000220	• SPRING	1	
5	6440-13122	• GEARCASE	1		60	K2300-000260	• SAFETY LEVER	1	
6	06000-00626	• BEARING	1		61	K2300-000250	• THROTTLE LEVER	1	
7	06000-06000	• BEARING	1		62	K3200-000380	• CLAMP (B)	1	
8	3565-13130	• SEAL	1		63	K5100-000230	• SPRING	1	
9	04065-02612	• SNAPRING	1		64	K5100-000210	• SPRING	1	
10	T3002-13210	• SHAFT	1		65	K2300-000270	• PLATE	1	
11	T3317-13220	• GEAR	1		66	B1122-C2910H	• SCREW	1	
12	6440-13242	• HOLDER (A)	1		67	K2300-000280	• SWITCH	1	
13	6019-13250	• HOLDER (B)	1		68	K5200-000090	• CORD	1	
14	T3002-13260	• NUT	1		69	K5100-000270	• CABLE COMP.	1	
15	848JC061D0	• PINION	1			_____	•• THROTTLE CABLE	1	
16	06000-00609	• BEARING	1			_____	•• SLEEVE	1	
17	06001-00609	• BEARING	1		70	K2300-000390	• LID	1	
18	T3300-13330	• SNAPRING	1		71	B1176-090530	• SCREW	4	
19	04065-02412	• RING	1		72	B1181-04054506	• NUT	4	
20	T4950-53040	• BOLT TORX	1	M5x30	73	848BU36914	TAP HEAD COMP.	1	
21	T4950-60800	• BOLT TORX	1	M6x8	74	848BU369M4	• CASE	1	
22	01641-20608	• WASHER	1		75	T3189-15191	• EYELET	2	
23	T4950-51200	• BOLT TORX	1	M5x12	76	T3189-15132	• COVER	1	
24	T3300-17202	HANGER COMP.	1		77	T3189-15142	• CORD HOLDER	1	
25	8488052000	SCREW	1		78	T3189-15160	• SPRING	1	
26	848JPX90R0	PLATE NAME	1		79	848BU369S0	• CORD	1	
27	8488X10020	PLATE CAUTION	1		80	8488U00070	TOOL SET	1	
28	848JL066A4	GUARD	1		81	8488U10040	• SOCKET	1	
29	848JL06634	GUARD ASSY	1		82	3540-91120	• SPANNER	1	
30	848JL066B2	• BLADE	1		83	1030-91340	• DRIVER	1	
31	4820-72150	• BOLT TORX	1	M4x16	84	3540-91110	• BAR	1	
32	3238-13150	• NUT	1	M4					
33	3550-14170	SPACER	1						
34	848JC266C0	BRACKET	1						
35	T4950-63040	BOLT TORX	2	M6x30					
41	3540-13283	COVER (NUT)	1						
42	848JL092B1	COVER (BLADE)	1						
43	848J823610	STRAP ASSY	1						
44	8488Z23011	BLADE	1						
45	T3110-14000	HANDLE ASSY	1						
46	0263-90530	• SCREW	4						
47	8488K40070	CLAMP	1						
48	T1504-83000	CABLE ASSY	1						
49	T1504-83100	• CABLE COMP.	1						
50	T3037-14520	• CORD COMP.	1						
51	6420-14511	• TUBE	1						
52	T3110-18000	GRIP ASSY	1						
53	K2300-000240	• GRIP (R)	1						
54	K2300-000230	• GRIP (L)	1						
55	K3200-000370	• CLAMP (A)	2						
56	K3300-000010	• PLATE (A)	1						

Fig.2 ENGINE GROUP

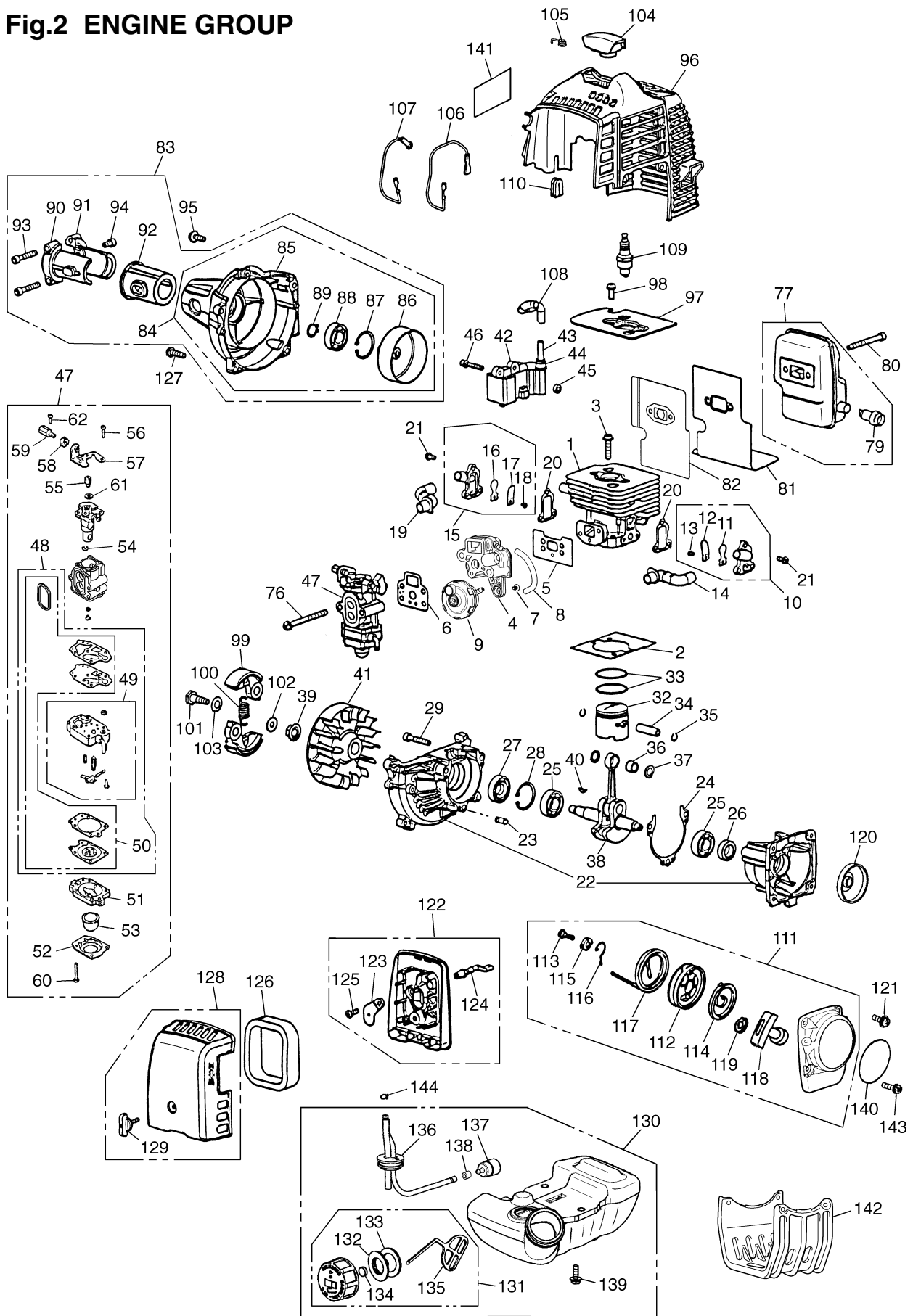
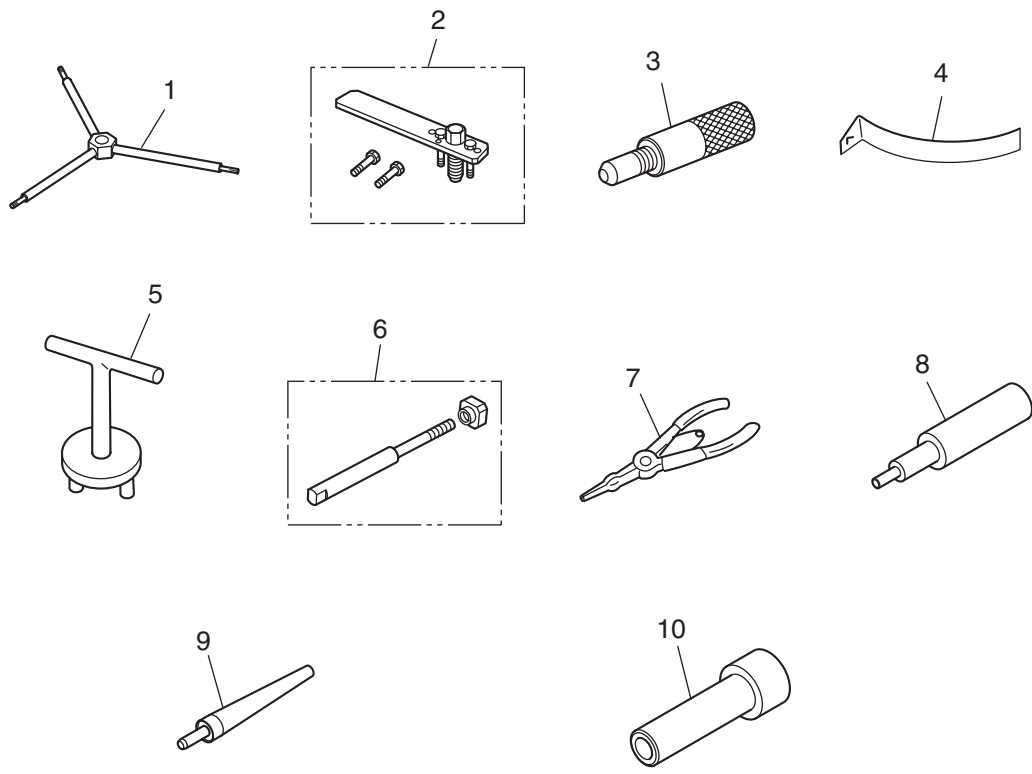


Fig.2 ENGINE GROUP

Key#	PART NUMBER	DESCRIPTION	Q'TY /UNIT	NOTE	Key#	PART NUMBER	DESCRIPTION	Q'TY /UNIT	NOTE
1	848F3R12A2	CYLINDER	1		80	4820-15310	BOLT, M5x50	2	
2	848F3R12B0	GASKET, base	1		81	848F3R15C0	GASKET	1	
3	4820-12130	BOLT, M5x22	2		82	848F3R15D0	PLATE, muffler	1	
4	848F4014A0	INSULATOR	1		83	848F305304	HOUSING ASSY	1	
5	848F4014B0	GASKET, insulator	1		84	4810-31102	• COVER COMP.	1	
6	T1590-13130	GASKET, carburetor	1		85	4810-31111	•• COVER, fan	1	
7	8488530600	SCREW, M3x6	1		86	848F3051A1	•• DRUM	1	
8	8488F40550	TUBE	1		87	04065-02812	•• SNAPRING	1	
9	848F408801	PUMP ASSY	1		88	T1701-31150	•• BEARING	1	
10	848F3R1601	REEDVALVE (S) ASSY	1		89	04064-01210	•• SNAP RING	1	
11	848F3R16C0	• REEDVALVE	1		90	6470-31211	• BRACKET (A)	1	
12	4810-16130	• STOPPER	1		91	6470-31221	• BRACKET (B)	1	
13	4810-16170	• SCREW, M3x8	1		92	6470-31230	• CUSHION	1	
14	848F3R16E0	PIRE AIR (S)	1		93	4820-21310	• BOLT, M5x30	2	
15	848F3R1611	REEDVALVE (F) ASSY	1		94	8488151210	• BOLT, M5x14	1	
16	848F3R16C0	• REEDVALVE	1		95	4820-32120	SCREW, M5x16	3	
17	4810-16130	• STOPPER	1		96	848F3R31A0	COVER, engine	1	
18	4810-16170	• SCREW, M3x8	1		97	848F3R12G0	PLATE	1	
19	848F3R16F0	PIPE AIR (F)	1		98	4820-12350	SCREW, M5x10	2	
20	848F3R16H0	GASKET, valve	2		99	4820-51110	SHOE	2	
21	8488141000	SCREW	6		100	4820-51220	SPRING	1	
22	4810-21101	CRANKCASE COMP.	1		101	1140-51250	SCREW	2	
23	2629-21130	• PIN	3		102	1140-51230	WASHER	2	
24	4810-21140	GASKET	1		103	1140-51242	WASHER	2	
25	06030-06001	BEARING	2		104	848F3071C2	CAP	1	
26	4810-21210	SEAL	1		105	1900-72120	SPRING	1	
27	1850-21220	SEAL	1		106	4810-71240	CORD	1	
28	04065-02812	SNAP RING	1		107	4810-71250	CORD, earth	1	
29	4820-21310	BOLT, M5x30	3		108	T1512-71320	TUBE	1	
30					109	3699-91867	PLUG, NGK CMR7H	1	
31					110	4810-72120	GROMMET	1	
32	848F4041A0	PISTON	1		111	4810-75100	RECOIL ASSY	1	
33	8488C34101	RING	2		112	4500-75120	• REEL	1	
34	8488B82800	PIN	1		113	4500-75150	• SCREW	1	
35	1260-41320	RING	2		114	1850-75130	• SPRING, spiral	1	
36	T1551-41410	BEARING	1		115	4500-75180	• COLLAR	1	
37	8488738002	WASHER	2		116	4500-75190	• ARM	1	
38	848F3R4200	CRANKSHAFT COMP.	1		117	4810-75160	• ROPE	1	
39	1650-43230	NUT	1		118	3330-75421	• KNOB	1	
40	1000-43240	KEY	1		119	4810-75170	• PLATE, stopper	1	
41	4810-71110	ROTOR	1		120	4500-75210	PULLEY	1	
42	T1512-71200	COIL ASSY	1		121	T1501-32120	SCREW, M5x16	2	
43	T1512-71220	• CORD	1		122	4810-82100	BODY ASSY	1	
44	2616-71320	• CAP	1		123	4810-82130	• PLATE, choke	1	
45	1260-71261	SPACER	2		124	5500-82140	• LEVER, choke	1	
46	4820-72150	BOLT, M4x22	2		125	2630-33610	• SCREW	1	
47	848F4C8100	CARBURETOR ASSY	1		126	4810-82170	ELEMENT	1	
48	848F600630	• REBUILD KIT	1		127	4820-12310	BOLT, M5x22	2	
49	1850-81450	•• BODY ASSY	1		128	848F408321	COVER ASSY	1	
50	4810-06021	•• GASKET KIT	1		129	5500-82221	• KNOB	1	
51	848F4081G0	• BODY	1		130	848F348501	TANK ASSY	1	
52	1850-81520	• COVER	1		131	T1015-85202	• CAP ASSY	1	
53	1751-81510	• PUMP	1		132	4500-85300	•• HOLDER ASSY	1	
54	1751-81130	• RING	1		133	4500-85220	•• PACKING	1	
55	1881-81140	• SWIVEL	1		134	5601-85260	•• FILTER	1	
56	1752-81110	• SCREW	2		135	4820-85260	•• STOPPER	1	
57	5500-81120	• BRACKET	1		136	4810-85300	• PIPE COMP.	1	
58	1751-81180	• NUT	1		137	3302-85400	• FLTER ASSY	1	
59	8488361200	• SCREW	1		138	1260-85460	• CLIP	1	
60	1850-81530	• SCREW	4		139	4820-85510	SCREW, M5x16	3	
61	5500-81160	• WASHER	1		140	T1504-75411	LABEL, recoil	1	
62	8488330400	• SCREW	1		141	848F6190B1	LABEL, cover	1	
63					142	848F4085Z0	GUARD	1	
76	4820-82310	SCREW, M5x60	2		143	4820-12130	BOLT, M5x22	2	
77	848F401510	MUFFLER ASSY	1		144	1950-86120	CLIP	1	
78									
79	4810-15140	• ARRESTER	1						

Fig.3 SPECIAL TOOLS



Key#	PART NUMBER	DESCRIPTION	Q'TY /UNIT	NOTE
1	3304-97611	HEXAGON WRENCH	1	suitable for M4, M5, M6 BOLT
2	2890-96100	PULLER ASS'Y	1	for remove ROTOR
3	4810-96220	STOPPER	1	for lock the moving of PISTON
4	3350-96240	GAUGE	1	for adjust AIR-GAP
5	4500-96100	PULLER	1	for attach and remove RECOIL PULLEY
6	1101-96220	ROD ASS'Y	1	for attach and remove PISTON PIN
7	5500-96110	PLIERS	1	long-nose plier ; use for SNAP RING
8	5500-96120	ROD	1	for push out CLUTCH DRUM
9	5500-96130	GUIDE, ring	1	for fit SNAP RING on CLUTCH DRUM
10	5500-96140	GUIDE, push	1	for fit SNAP RING on CLUTCH DRUM