

# PARTS LIST

## BRUSHCUTTERS

# BCZ2602DL

**NOTE :**

1. Use KOMATSU ZENOAH genuine parts as specified in the parts list for repair and/or replacement.
2. KOMATSU ZENOAH does not warrant the machines, which have been damaged by the use of any parts other than those specified by the company.
3. When placing parts orders for repair and/or replacement, check if the model name and the serial number are applicable to those specified in the parts list, then use parts number described in the parts list.
4. The contents described in the parts list are accurate as of the date and may change due to improvement.
5. The parts for the machine shall be supplied ten (10) years after the machine is discontinued. [It is possible that some specific parts may be subject to change of their delivery term and list price within the limit of ten (10) years after the machine is discontinued. It is also possible that some parts may be available even after the limit of ten (10) years.]

APPLICABLE SERIAL NUMBERS:

200101 and up

November 2003

Fig.1 CUTTER GROUP

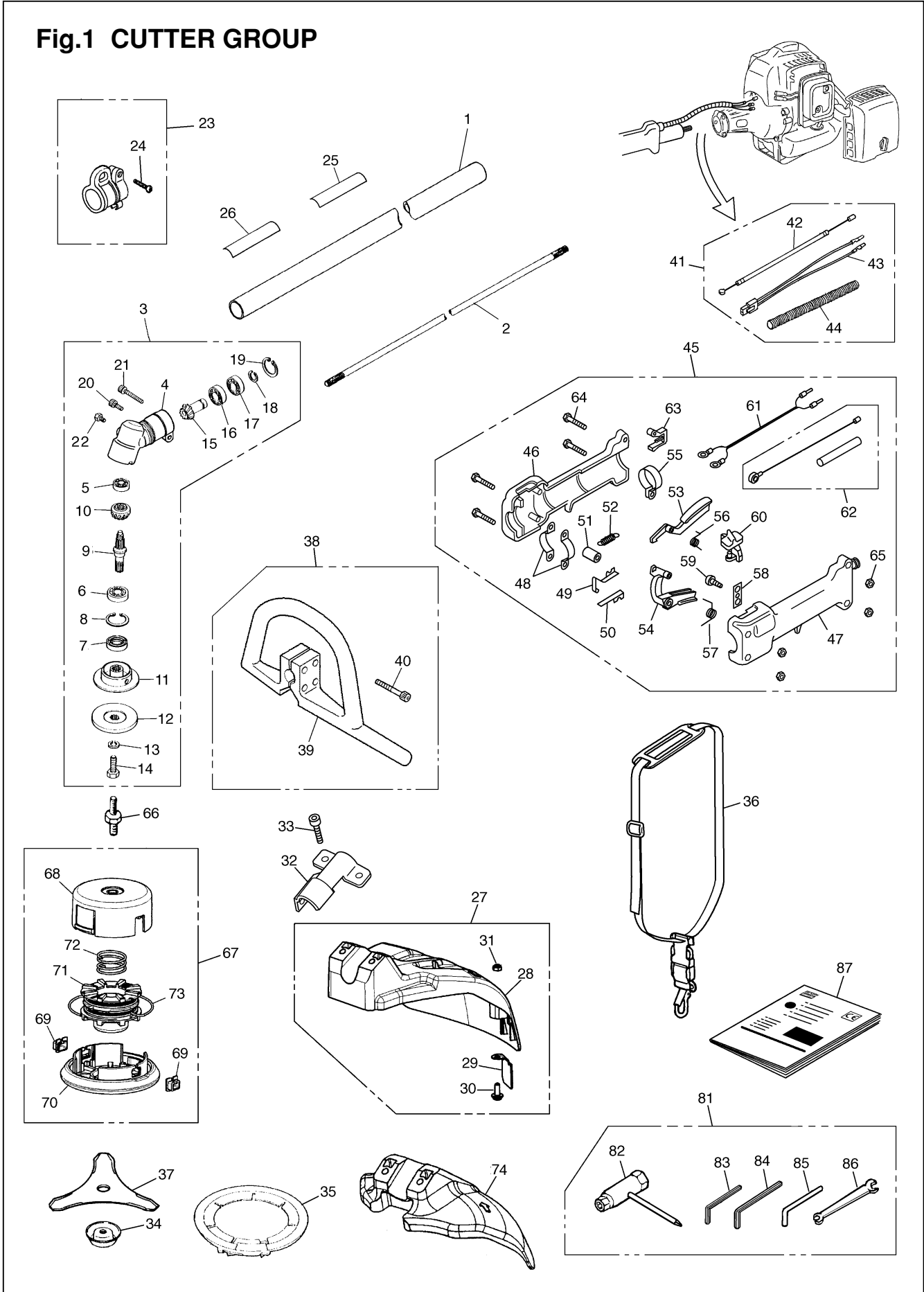


Fig.1 CUTTER GROUP

Key#	PART NUMBER	DESCRIPTION	Q'TY /UNIT	NOTE	Key#	PART NUMBER	DESCRIPTION	Q'TY /UNIT	NOTE
1	T3147-11300	PIPE COMP, 1500x24xT1.5	1		53	K2300-000260	• SAFETY LEVER	1	
2	3520-12213	SHAFT, spline $\phi$ 7x7teeth	1	1536x7	54	K2300-000250	• THROTTLE LEVER	1	
3	848JA06100	GEARCASE ASSY	1		55	K3200-000380	• CLAMP (B)	1	
4	6440-13122	• GEARCASE	1		56	K5100-000230	• SPRING	1	
5	06000-00626	• BEARING	1		57	K5100-000210	• SPRING	1	
6	06000-06000	• BEARING	1		58	K2300-000270	• PLATE	1	
7	3565-13130	• SEAL	1		59	B1122-C2910H	• SCREW	1	
8	04065-02612	• RING	1		60	K2300-000280	• SWITCH	1	
9	6440-13211	• SHAFT	1		61	K5200-000090	• CORD	1	
10	6440-13220	• GEAR	1		62	K5100-000270	• CABLE COMP	1	
11	6440-13242	• HOLDER(A)	1			—————	•• THROTTLE CABLE	1	
12	6019-13250	• HOLDER(B)	1			—————	•• SLEEVE	1	
13	3560-13290	• WASHER	1		63	K2300-000390	• LID	1	
14	3560-13261	• BOLT	1	M7x25(L)	64	B1176-090530	• SCREW	4	
15	T3002-13310	• PINION	1		65	B1181-04054506	• NUT	4	
16	06000-00609	• BEARING	1		66	6041-99240	SHAFT	1	
17	06001-00609	• BEARING	1		67	T3189-15102	TAP HEAD COMP.	1	
18	T3300-13330	• RING	1		68	T3189-15112	• CASE	1	
19	04065-02412	• RING	1		69	T3189-15191	• EYELET	2	
20	01252-30512	• BOLT	1		70	T3189-15132	• COVER	1	
21	3350-21320	• BOLT	1	M5x30	71	T3189-15142	• CORD HOLDER	1	
22	0224-40610	• BOLT	1		72	T3189-15160	• SPRING	1	
23	T3300-17202	HANGER COMP	1		73	T3189-15180	• CORD	1	
24	0263-90520	• SCREW	1		74	T3246-24110	GUARD	1	
25	848JA190R0	PLATE NAME	1						
26	6425-12552	PLATE CAUTION	1		81	T3087-91000	TOOL-SET	1	
27	T3245-24100	GUARD COMP	1		82	T3039-91310	• SOCKET	1	
28	T3245-24110	• GUARD	1		83	09007-00425	• WRENCH	1	
29	T3002-24121	• BLADE	1		84	09007-00528	• WRENCH	1	
30	T4960-51431	• SCREW TORX	2		85	3540-91110	• BAR	1	
31	3320-15310	• NUT	2		86	3540-91120	• SPANNER	1	
32	848JC066C1	BRACKET	1		87	848JA193A0	MANUAL	1	
33	01252-30630	BOLT	2						
34	3560-13284	COVER(BOLT)	1						
35	6251-15910	COVER(BLADE)	1						
36	T3300-17100	STRAP ASSY	1						
37	6298-E3390	BLADE	1						
38	T3110-14000	HANDLE ASSY	1						
39	T3110-14110	• HANDLE	1						
40	0263-90530	• SCREW	4						
41	T1504-83000	CABLE ASSY							
42	T1504-83100	• CABLE COMP	1						
43	T3037-14520	• CORD COMP	1						
44	6420-14511	• TUBE	1						
45	T3110-18000	GRIP ASSY	1						
46	K2300-000240	• GRIP (R)	1						
47	K2300-000230	• GRIP (L)	1						
48	K3200-000370	• CLAMP (A)	1						
49	K3300-000010	• PLATE (A)	1						
50	K3300-000020	• PLATE (B)	1						
51	K5100-000240	• COLLAR	1						
52	K5100-000220	• SPRING	1						

Fig.2 ENGINE GROUP

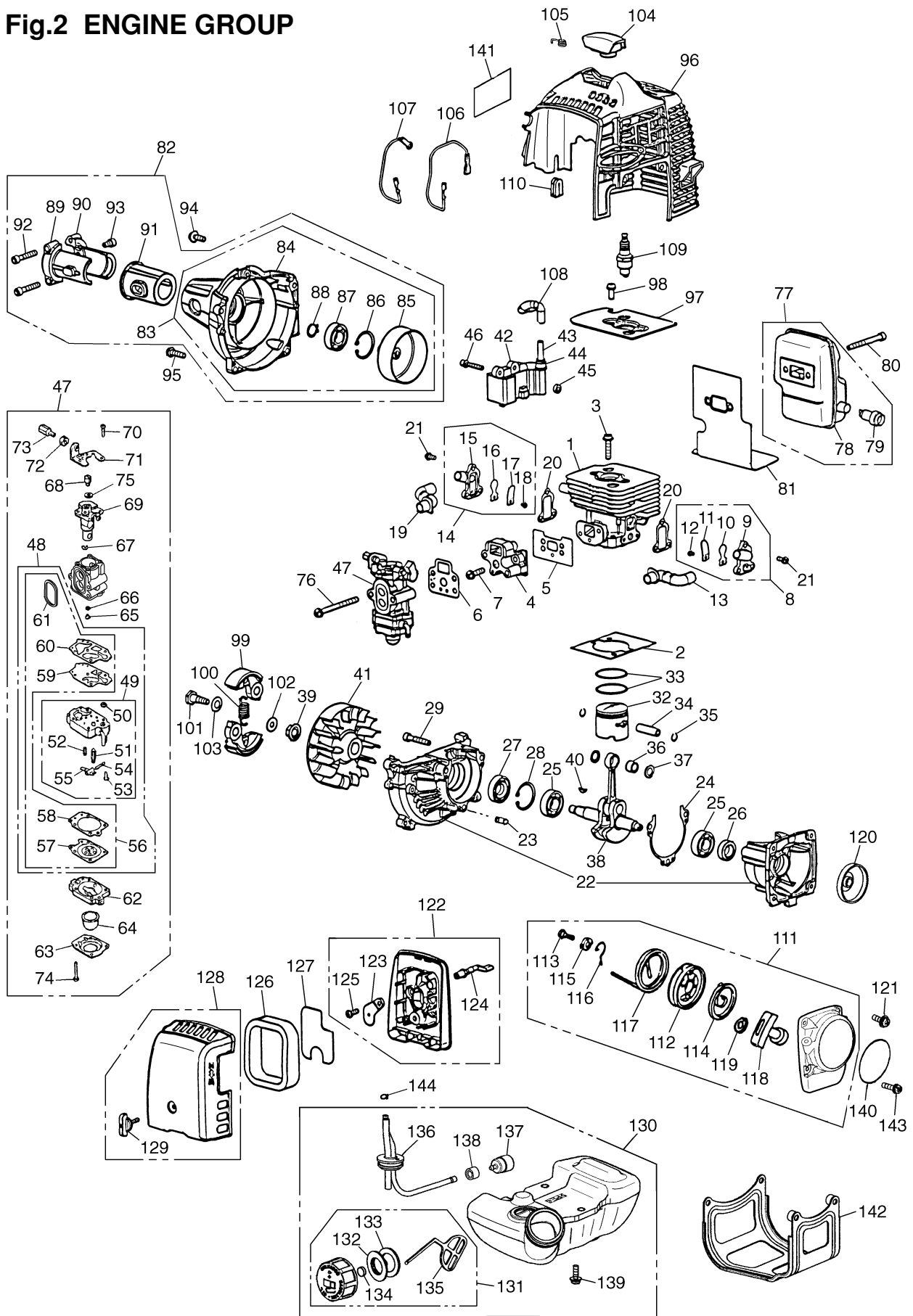


Fig.2 ENGINE GROUP

Key#	PART NUMBER	DESCRIPTION	Q'TY /UNIT	NOTE	Key#	PART NUMBER	DESCRIPTION	Q'TY /UNIT	NOTE
1	4810-12111	CYLINDER	1		73	1918-81170	• SCREW, adjuster	1	
2	4810-12210	GASKET, base	1		74	1850-81530	• SCREW	4	
3	1850-12130	BOLT	2	M5x22	75	5500-81160	• WASHER	1	
4	4810-13162	INSULATOR	1		76	0263-90560	SCREW	2	M5x60
5	4810-13120	GASKET, insulator	1		77	4810-15100	MUFFLER ASS'Y	1	
6	4810-13130	GASKET, carburetor	1		78	4810-15111	• MUFFLER	1	
7	0263-90520	SCREW	2	M5x20	79	4810-15140	• ARRESTER	1	
8	848F301601	REEDVALVE (S)-A	1		80	01252-30550	BOLT	2	M5x50
9	848F3016A1	• VALVECASE (S)	1		81	T1501-15211	GASKET	1	
10	4810-16120	• REEDVALVE	1		82	4810-31002	COVER-A	1	
11	4810-16130	• STOPPER	1		83	4810-31102	• COVER-C	1	
12	4810-16170	• SCREW	1	M3x8	84	4810-31111	•• COVER, fan	1	
13	4810-16150	PIRE AIR (S)	1		85	848F3051A1	•• DRUM	1	
14	848F301611	REEDVALVE (F)-A	1		86	04065-02812	•• SNAPRING	1	
15	848F3016B1	• VALVECASE (F)	1		87	T1701-31150	•• BEARING	1	
16	4810-16120	• REEDVALVE	1		88	04064-01210	•• SNAP RING	1	
17	4810-16130	• STOPPER	1		89	6470-31211	• BRACKET (A)	1	
18	4810-16170	• SCREW	1	M3x8	90	6470-31221	• BRACKET (B)	1	
19	4810-16160	PIPE AIR (F)	1		91	6470-31230	• CUSHION	1	
20	4810-16140	GASKET, valve	2		92	01252-30530	• BOLT	2	M5x30
21	4810-16180	SCREW	6		93	01252-30514	• BOLT	1	M5x14
22	4810-21101	CRANKCASE-C	1		94	5500-85510	SCREW	1	M5x16
23	2629-21130	• PIN	3		95	0263-90520	SCREW	4	M5x20
24	4810-21140	GASKET	1		96	4810-32111	COVER, engine	1	
25	06030-06001	BEARING	2		97	T1501-12310	PLATE	1	
26	4810-21210	SEAL	1		98	0263-90510	SCREW	2	M5x10
27	1850-21220	SEAL	1		99	4820-51110	SHOE	2	
28	04065-02812	SNAP RING	1		100	4820-51220	SPRING	1	
29	01252-30530	BOLT	3	M5x30	101	1140-51250	SCREW	2	
					102	1140-51230	WASHER	2	
					103	1140-51242	WASHER	2	
32	4810-41110	PISTON	1		104	4810-72111	CAP	1	
33	5910-41210	RING	2		105	1900-72120	SPRING	1	
34	T1513-41310	PIN	1		106	4810-71240	CORD	1	
35	1260-41320	RING	2		107	4810-71250	CORD, earth	1	
36	5500-41410	BEARING	1		108	T1512-71320	TUBE	1	
37	1101-41340	WASHER	2		109	4810-73110	PLUG, NGK CMR7A	1	
38	4810-42000	CRANKSHAFT-C	1		110	4810-72120	GROMMET	1	
39	1650-43230	NUT	1		111	4810-75100	RECOIL ASS'Y	1	
40	1000-43240	KEY	1		112	4500-75120	• REEL	1	
41	4810-71110	ROTOR	1		113	4500-75150	• SCREW	1	
42	T1512-71200	COIL-A	1		114	1850-75130	• SPRING, spiral	1	
43	T1512-71220	• CORD	1		115	4500-75180	• COLLAR	1	
44	2616-71320	• CAP	1		116	4500-75190	• ARM	1	
45	1260-71261	SPACER	2		117	4810-75160	• ROPE	1	
46	4500-72150	BOLT	2	M4x22	118	3330-75421	• KNOB	1	
47	4810-81002	CARBURETOR ASS'Y, WYA-1B	1		119	4810-75170	• PLATE, stopper	1	
48	T1551-06030	• REBUILD KIT	1		120	4500-75210	PULLEY	1	
49	T1551-81450	•• BODY ASS'Y	1		121	5500-85510	SCREW	2	M5x16
50	—————	••• SCREEN	—		122	4810-82100	BODY ASS'Y	1	
51	—————	••• VALVE	—		123	4810-82130	• PLATE, choke	1	
52	—————	••• SPRING	—		124	5500-82140	• LEVER, choke	1	
53	—————	••• SCREW	—		125	2630-33610	• SCREW	1	
54	—————	••• PIN	—		126	4810-82170	ELEMENT	1	
55	—————	••• LEVER	—		127	4810-82180	SCREEN	1	
56	4810-06021	•• GASKET KIT	1		128	4810-82200	COVER ASS'Y	1	
57	—————	••• DIAPHRAGM	—		129	5500-82221	• KNOB	1	
58	—————	••• GASKET, diaphragm	—		130	T1504-85002	TANK ASS'Y	1	
59	—————	••• DIAPHRAGM, pump	—		131	T1015-85202	• CAP ASS'Y	1	
60	—————	••• GASKET, pump	—		132	4500-85300	•• HOLDER-A	1	
61	4810-81130	••• RING	1		133	4500-85220	•• PACKING	1	
62	1850-81490	• BODY, purge	1		134	5601-85260	•• FILTER	1	
63	1850-81520	• COVER, pump	1		135	4820-85260	•• STOPPER	1	
64	1751-81510	• PUMP, priming	1		136	4810-85300	• PIPE COMP.	1	
65	4810-81250	• JET #38.5	1		137	3302-85400	• FLTR ASS'Y	1	
66	1751-81240	• O-RING	1		138	2841-31280	• COLLAR	1	
67	1751-81130	• RING	1		139	5500-85510	SCREW	3	M5x16
68	1881-81140	• SWIVEL	1		140	T1504-75410	LABEL, recoil	—	
69	—————	• VALVE ASS'Y	—		141	T1504-31130	LABEL, cover	1	
70	1752-81110	• SCREW	2		142	T1506-31910	GUARD	1	
71	5500-81120	• BRACKET	1		143	0263-90525	SCREW	2	
72	1751-81180	• NUT, adjuster	1		144	1950-86120	CLIP	1	





# **KOMATSU ZENOAH CO.**

1-9 Minamidai, Kawagoe, Saitama, 350-1192 Japan

---