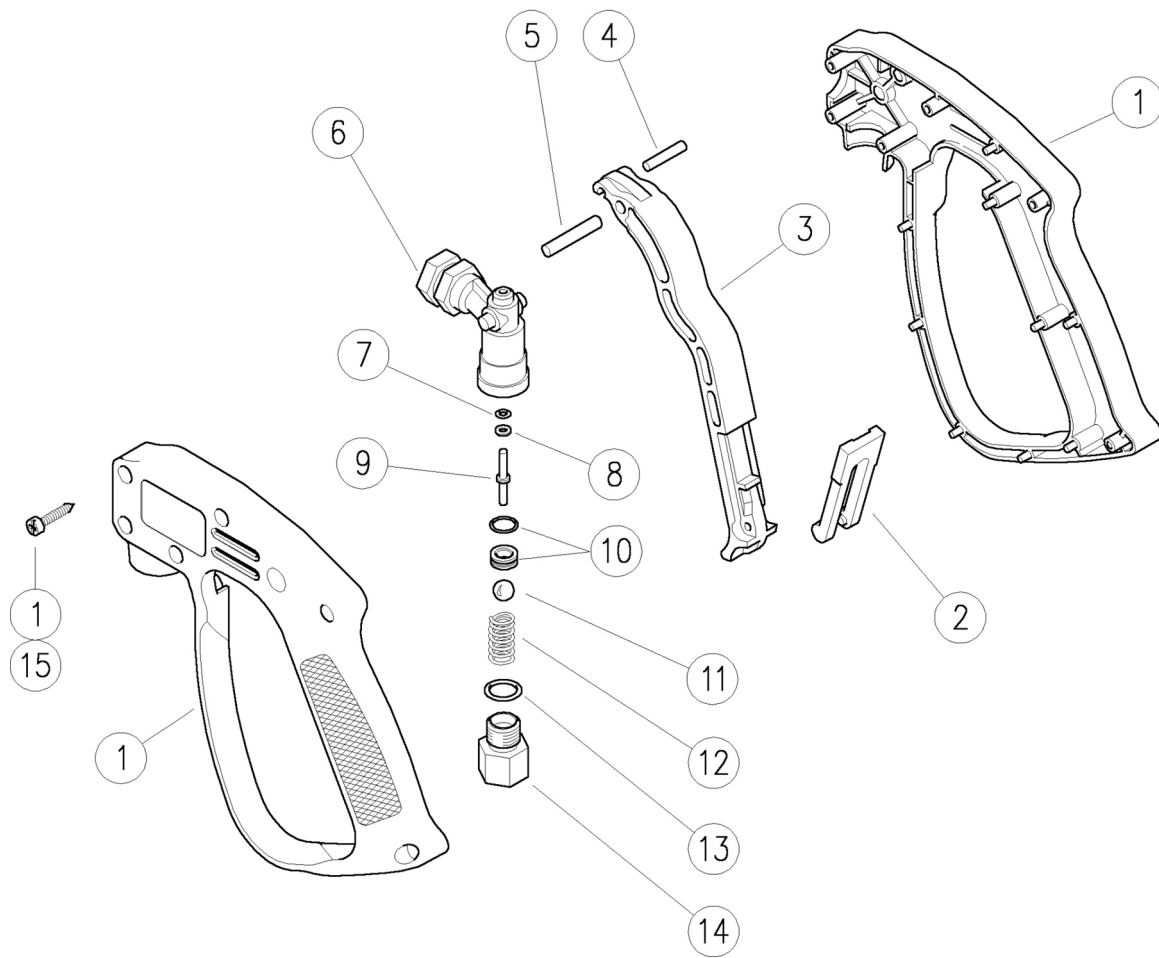


30.0100.00 RL20 Pistole G3/8IG-G1/4IG
 30.0100.20 RL20 Pistole G1/4 IG/IG
 30.0100.40 RL20 Pistole A M22-G1/4IG

30.0100.50 RL20 Pistole 3/8IG-1/4IG Npt
 30.0100.60 RL20 Pistole G3/8AG-G1/4IG



Pos.	Bestell-Nr.	Beschreibung	Meng	K1	K2	K3	K4	
1	30.0108.24	Kasten-Kit -RL20 +Schrauben	1					1
2	30.1510.84	Sicherung, PA rot	1					10
3	30.0018.84	Hebel -RL16-20, PA schwarz	1					10
4	30.0020.51	Zylinderstift, 4x16 mm Ed/st.	1					10
5	30.0509.31	Zylinderstift, 5x24,5 mm Mess.	1					10
6	30.0017.35	Gehäuse -RL16-20, G1/4IG Mess.	1					3
6	30.0012.35	Gehäuse -RL16-20, 1/4IG Npt Mess. (1)	1					5
7	10.4035.00	Stützring, 3,1x6x1 mm	1	•				10
8	10.3036.10	O-Ring, 1,78x2,9 mm Vi 70	1	•				10
9	30.0019.51	Kolben, 3 mm Ed/st.	1	•				10
Kit	Bestell-Nr.	Beschreibung						
K1	30.0109.24	Ersatz-Kit -RL20, 7x1Stk.						1

Pos.	Bestell-Nr.	Beschreibung	Meng	K1	K2	K3	K4	
10	30.0106.20	Sitz, 6 mm+O-Ring 1mm NBR85	1	•				10
11	14.7448.00	Kugel, 5/16" Ed/st.	1	•				10
12	30.0001.51	Feder, 1,4x7,8x13,5 mm Ed/st.	1					10
13	10.3058.02	O-Ring, 1,78x10,82 mm Ni 85	1	•				10
14	30.0103.31	Nippel, G1/4AG-G3/8IG Mess. (2)	1					5
14	30.0023.31	Nippel, G1/4 AG/IG Mess. (3)	1					3
14	30.0105.31	Nippel, G1/4AG-M22x1,5 AG Mess. (4)	1					5
14	30.0104.31	Nippel, G1/4AG-G3/8AG keg/gsnkt Mess. (5)	1					5
14	30.0012.35	Gehäuse -RL16-20, 1/4IG Npt Mess. (1)	1					5
15	16.3077.00	S/schneid.Schraube, DIN7981 3,5x18 mm	6					10

(1) 30.0100.50 (2) 30.0100.00 (3) 30.0100.20 (4) 30.0100.40 (5) 30.0100.60