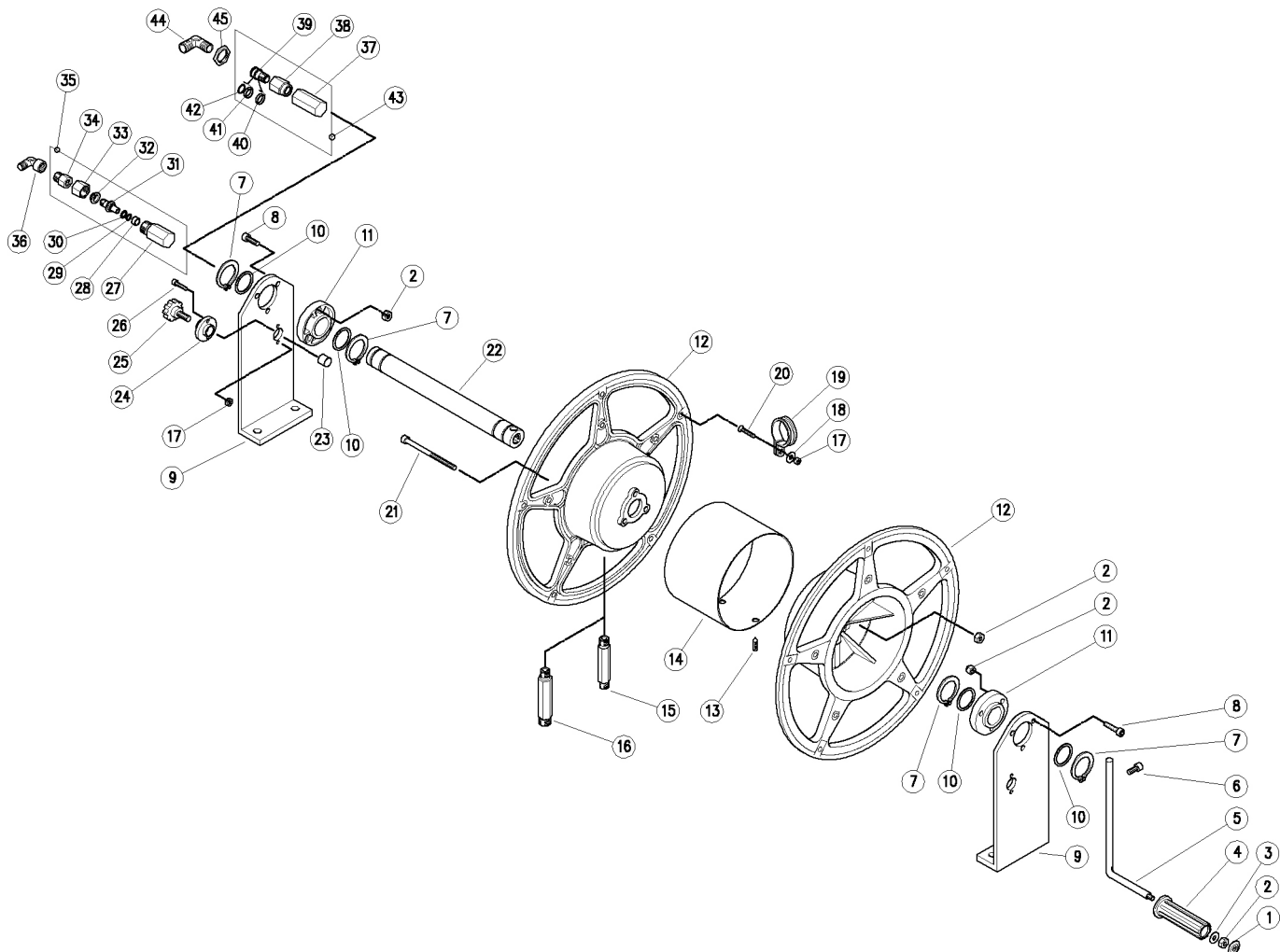


29.0360.00 T52 Schlauchtrommel, Alum.G3/8 AG/AG

29.0375.00 T53 Schlauchtrommel, Alum.G1/2 AG/AG



Pos.	Bestell-Nr.	Beschreibung	Meng	K1	K2	K3	K4
1	41.0411.84	Stöpsel, Knopf PP schwarz	1				5
2	11.4589.10	6-kantmutter, M8 selbstsichernd	10				10
3	14.3572.00	Dichtscheibe, 8,4x21x1,5 mm	1				10
4	29.0370.84	Drehgriff	1				2
5	29.0363.61	Kurbel -T52 M8x250 mm	1				1
6	16.1958.16	Schraube, DIN912 M8x16 mm vnzkt.	1				4
7	10.1035.00	Sprengring, E 35	4				5
8	16.1958.26	Schraube, DIN912 M8x25 mm vnzkt.	6				4
9	29.0364.63	Obere Stütze -T52, schwarz	2				2
10	14.4076.00	Dichtung, 35x43x2 mm	4				10
11	29.0368.84	Flansch, 80x28 mm schwarz	2				2
12	29.0361.44	Seitlich.Scheibe -T52, Al schwarz	2				1
13	16.2241.20	Gewindestift, DIN914 M10x20 mm	2				10
14	29.0369.66	Kasten -T52, schwarz	1				1
15	29.0377.51	Zylinder, 115 mm G1/2 AG	1				1
16	29.0362.51	Zylinder, 113 mm 2xG3/8 AG (1)	1				1
17	11.4541.00	6-kantmutter, M6	4				10
18	14.3570.18	Dichtscheibe, 6,6x18x2 mm	2				10
19	11.7524.30	Schelle, D.22 mm	2				5
20	16.1898.25	Schraube, DIN7991 M6x30mm	2				10
21	16.1961.20	Schraube, DIN912 M8x120 mm vnzkt.	3				4
22	29.0367.66	Rohr, 35x360 mm	1				1
23	29.0366.81	Bremse T52	1				3

Pos.	Bestell-Nr.	Beschreibung	Meng	K1	K2	K3	K4
24	29.0365.61	Flansch, 45x21mm	1				2
25	16.4540.35	Drehkreuz, M10x30 mm AG	1				3
26	16.1895.18	Schraube, DIN912 M6x18 mm vnzkt.	2				4
27	26.1131.51	Anschl., 90° G3/8 IG-M22x1AG Ed/st. (1)	1				5
28	26.1046.84	Büchse, 10x14x7 mm K/stoff. (1)	1				5
29	10.3109.95	O-Ring, 2,4x9,3 mm Vi 70 (1)	1				25
30	10.4010.01	Stützring, offn. 10,2x13,9x1,2 mm (1)	1				50
31	26.1041.51	Zapfen, M12x1,25 Ed/st. (1)	1				5
32	26.1045.84	Büchse, 12x20x6 mm K/stoff. (1)	1				5
33	26.1042.51	Ringmutter, M22x1 Ed/st. (1)	1				5
34	26.1101.51	Hint.Kpl., M12x1,25IG-G3/8AG k/snkt Ed/st (1)	1				5
35	26.1130.00	MR-l, G3/8 IG/AG Ed/st. (1)	1				3
36	12.2010.00	Winkel ,Mess. G3/8 AG/IG (1)	1				25
37	29.0376.51	Muffe, 3/8FIG Ed/st. (2)	1				5
38	26.1073.51	Muffe, G1/2IG Ed/st. (2)	1				5
39	26.1072.51	Zapfen, M15x1-19 mm Ed/st. (2)	1				5
40	26.1074.85	Büchse, 15,5x19x4 mm PTFE (2)	1				5
41	26.1075.85	Büchse, offen 15,5x19x4 mm PTFE (2)	1				5
42	10.3092.10	O-Ring, 2x15 mm Vi 70 (2)	1				10
43	26.1078.00	SW5 Drehgel,Ed/st. G1/2-3/8 IG (2)	1				5
44	12.2020.00	Winkel ,Mess. G1/2 AG/AG (2)	1				25
45	29.0175.31	Schraubmutter, G1/2 IG Mess. (2)	1				10

(1) 29.0360.00 (2) 29.0375.00