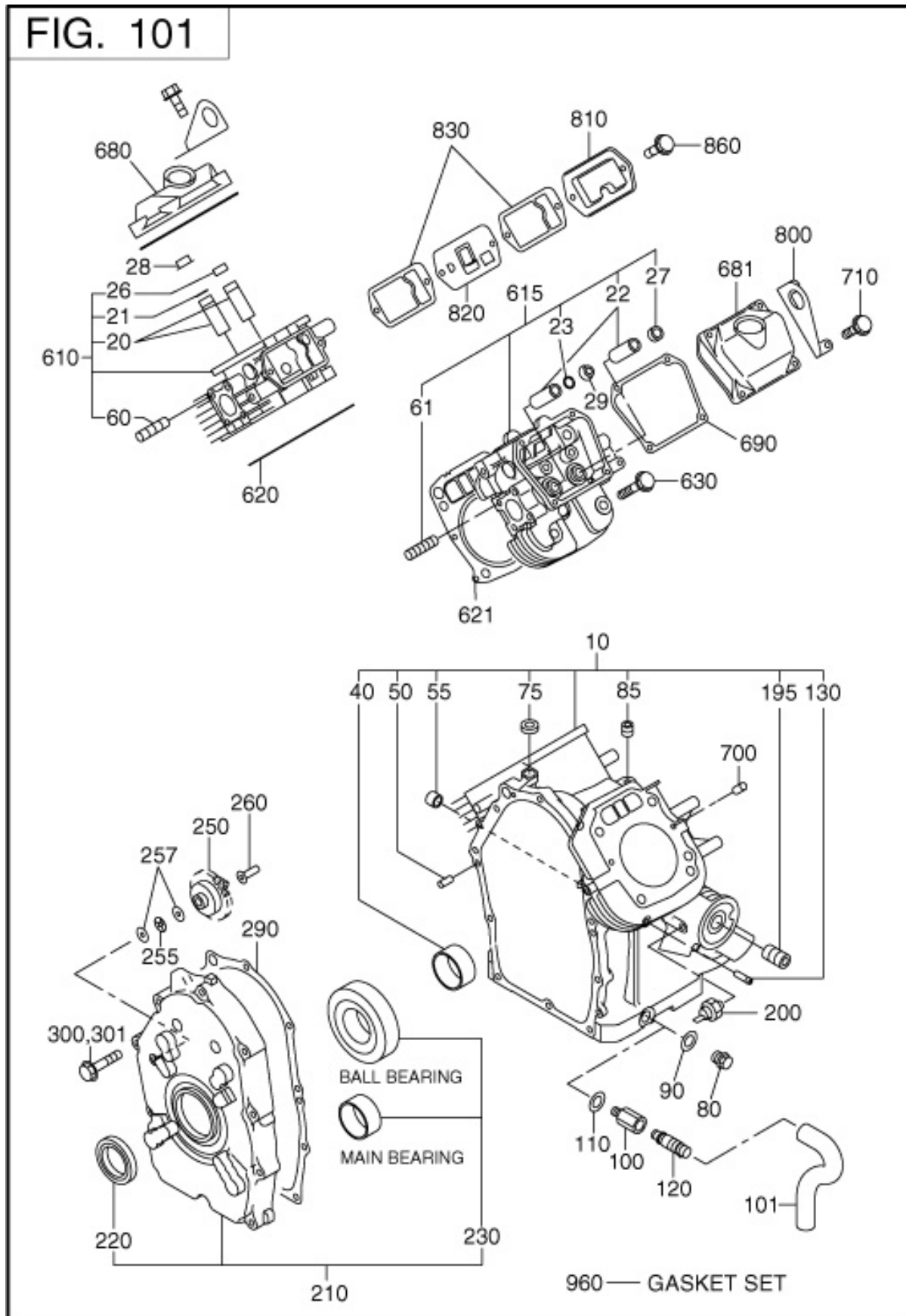


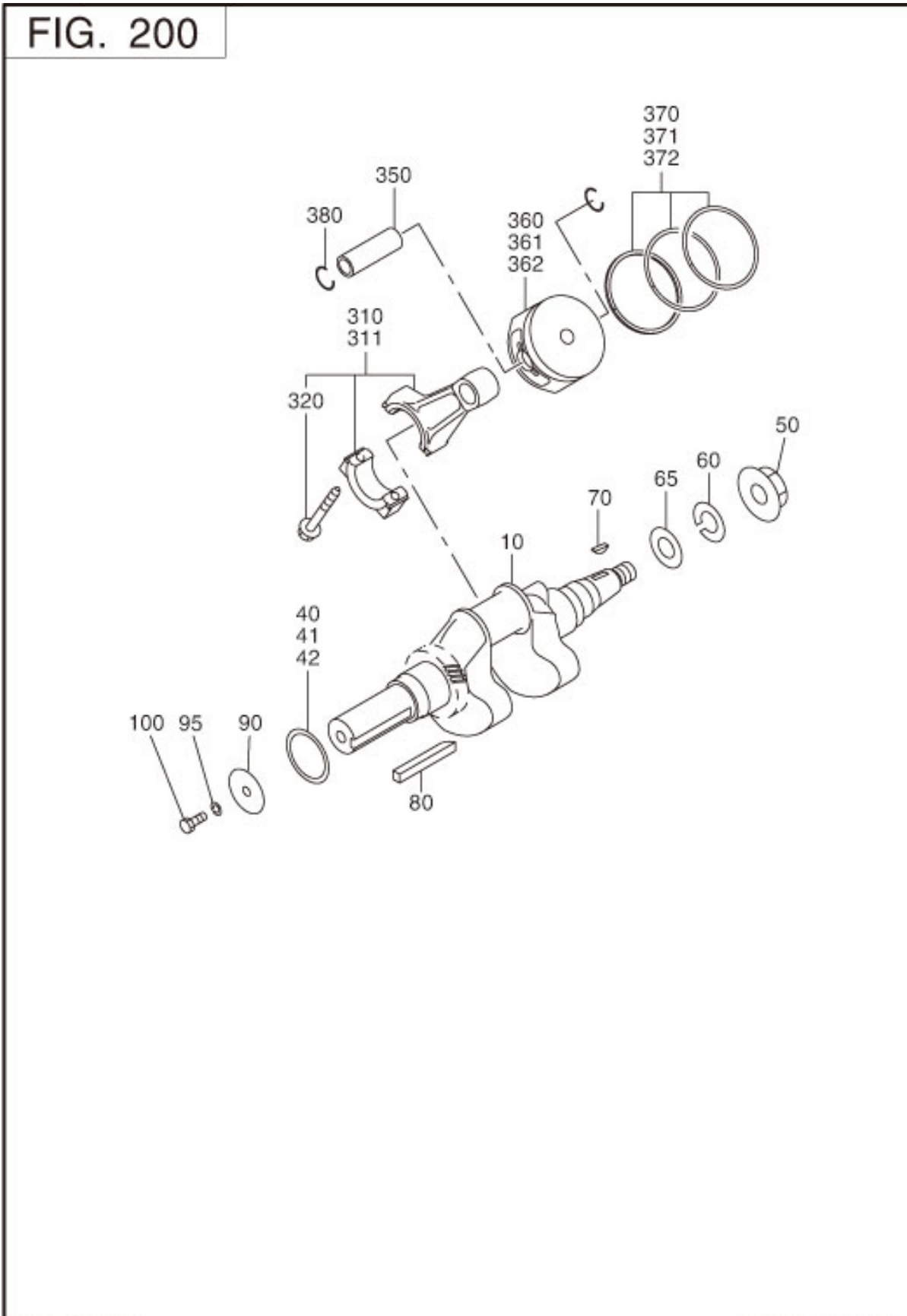
1 CRANK CASE



REF.	PART NUMBER	PART NAME	CODE NO.	QTY	REMARKS	INTERCHANGE
10	263-10111-01	CRANK CASE CP	-	1		263-10111-11
20	263-14211-03	VALVE GUIDE	-	2	6DX11DX32.5L	
21	056-51000-50	CLIP	-	1	10.7DX0.9D	
22	263-14211-03	VALVE GUIDE	-	2	6DX11DX32.5L	
23	056-51000-50	CLIP	-	1	10.7DX0.9D	
26	132-07AA0-50	SEAL-INT VALVE	-	1		
27	132-07AA0-50	SEAL-INT VALVE	-	1		
28	263-35341-03	RETAINER PLATE	-	1	11DX17.3DX27DX4.7H	
29	263-35341-03	RETAINER PLATE	-	1	11DX17.3DX27DX4.7H	
40	263-15802-03	MAIN BEARING	-	1	45DX50DX23B W/STOPER	
50	031-00801-00	DOWEL PIN	7122-	2	8DX20L	
	005-26081-80	DOWEL PIN	-7121	2	8DX18L	031-00801-00
55	263-55601-03	PIPE	6910-	2	11DX8.8DX8L	
	142-55601-03	PIPE	-6909	2	11DX8.8DX8L	263-55601-03
60	010-50802-90	STUD	-	4	M8X1.25X30L	
61	010-50802-90	STUD	-	4	M8X1.25X30L	
75	044-00800-10	OIL SEAL	-	1	8DX14DX4B	
80	040-11400-30	PLUG	-	2	M14X1.5X20DX12L	
85	235-15421-03	BLIND PLUG	-	1	PT1/8X8L	
90	021-11400-20	GASKET	-	2	14.1DX19DX2.3T	
130	159-65401-03	PIPE(PULSE)	-	1	4DX6DX25L	
195	263-15901-03	UNION	-	1	3/4X16UNFX30L	
200	248-76301-01	SWITCH OIL PRESSURE	-	1		263-76102-H1
210	263-11002-31	MAINBEARING COVER CP	6727-	1		
	263-11002-11	MAINBEARING COVER CP	-6726	1		
220	044-04200-30	OIL SEAL	-	1	42DX60DX9B	
230	060-04500-10	BALL BEARING	-	1	45DX100DX25B	
250	263-45003-01	GOVERNOR GEAR CP	-	1	52DX26T N=25	
255	263-46215-A3	THRUST BEARING	-	1	6.4DX17.5DX2T	
257	263-46214-A3	WASHER	-	2	6DX19DX1T	

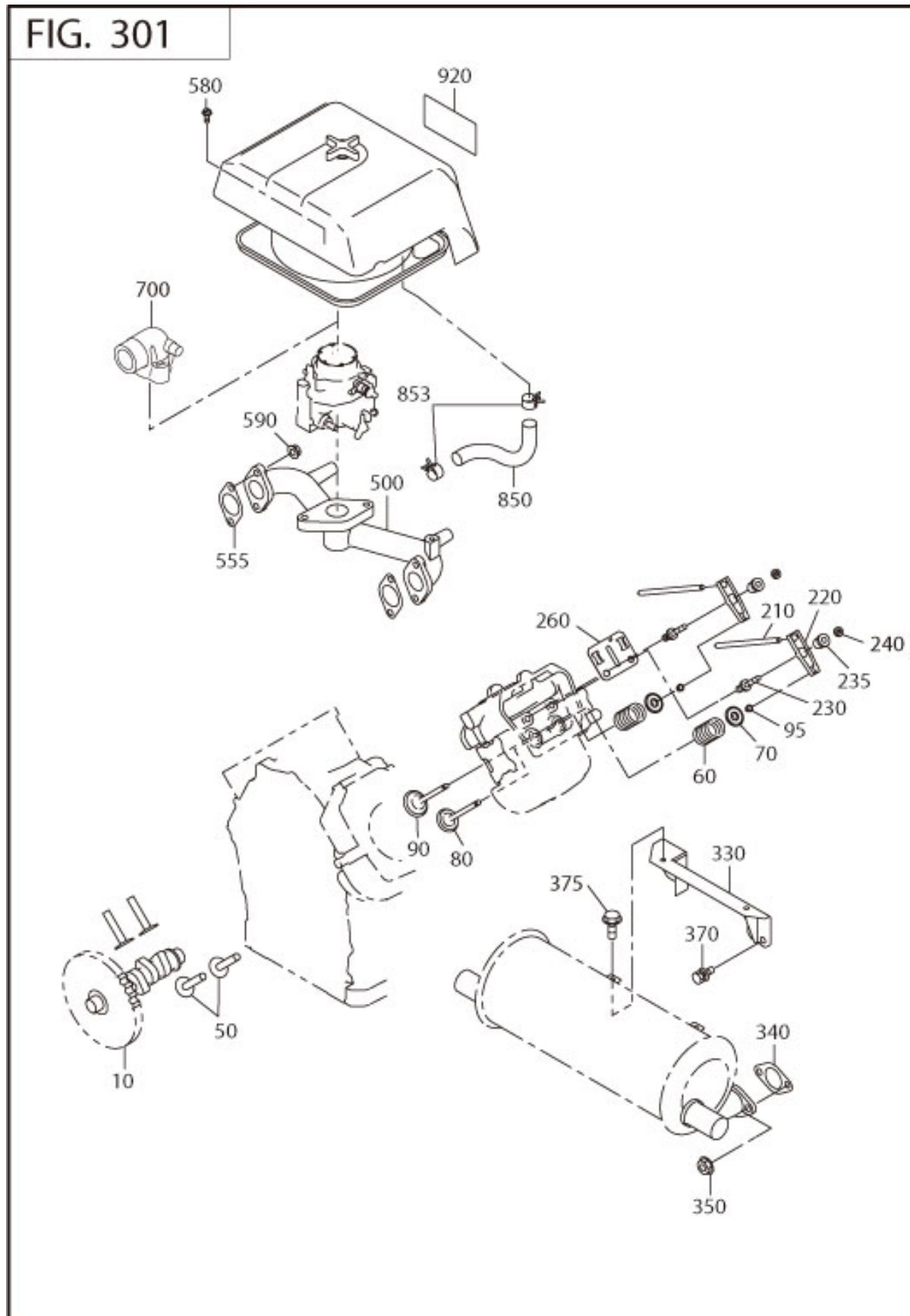
REF.	PART NUMBER	PART NAME	CODE NO.	QTY	REMARKS	INTERCHANGE
260	277-41901-03	GOVERNOR SLEEVE	-	1	6DX7.6DX16DX26L	
290	263-16002-A3	GASKET (M.B COVER)	-	1	T=0.5	
300	011-00802-20	FLANGE BOLT	-	8	M8X1.25X17DX45L	
301	011-00801-60	FLANGE BOLT	-	2	M8X55L	
610	263-13211-01	CYLINDER HEAD 1 CP	-	1		
615	263-13311-01	CYLINDER HEAD 2 CP	-	1		
620	263-15021-21	GASKET 1 (CYL HEAD)	7047-	1	T=0.4	
	263-15021-11	GASKET 1 (CYL HEAD)	-7046	1	T=0.4	263-15021-21
621	263-15121-11	GASKET 2 (CYL HEAD)	7047-	1	T=0.4	
	263-15121-01	GASKET 2 (CYL HEAD)	-7046	1	T=0.4	263-15121-11
630	011-01000-70	FLANGE BOLT	-	8	M10X1.25X19DX65L	
680	280-15501-A3	ROCKER COVER	-	1		
681	263-15501-A3	ROCKER COVER	-	1		
690	263-16101-A3	GASKET(ROCKER COVER)	-	2	T=0.4	
700	031-00600-20	DOWEL PIN	-	4	6DX14.5L	
710	011-00601-01	FLANGE BOLT	-	8	M6X1.0X13DX28L	
800	280-19001-A3	HOOK	-	2		
810	263-14301-03	BREATHER COVER	-	1		
820	280-14401-A1	BREATHER PLATE CP	-	1		
830	263-16006-03	GASKET(BREATHERPLATE	-	2	T=1.5	
860	011-00600-30	FLANGE BOLT	-	2	M6X1.0X14DX14L	
960	263-99001-27	GASKET SET	-	1		

2 CRANK,PISTON GROUP



REF.	PART NUMBER	PART NAME	CODE NO.	QTY	REMARKS	INTERCHANGE
10	263-21301-21	CRANK SHAFT CP	-	1		
40	263-25012-A3	SPACER	-	1	45.3DX58DX0.8T	
41	263-25013-A3	SPACER	-	1	45.3DX58DX1.0T	
42	263-25014-A3	SPACER	-	1	45.3DX58DX1.2T	
50	018-01800-10	FLANGE NUT	-	1	M18X1.5X31DX14H	
65	003-10180-00	WASHER	6757-	1	19DX32DX2.6T	
70	005-32054-01	WOODRUFF KEY	-	1	5BX7.5HX19D	
310	263-22601-10	CONNECTING ROD AY	6727-	2	117CDX30B 39D-21D	
	263-22601-00	CONNECTING ROD AY	-6726	2	117CDX30B 39D-21D	
311	263-22602-00	CONNECTING ROD AY	-	2	0.25 U.S.	
320	001-05084-00	FLANGE BOLT	6727-	2	M8X1.25X16DX40L	
	001-05084-00	FLANGE BOLT	-6726	2	M8X1.25X16DX40L	
350	263-23301-23	PISTON PIN	6666-	2	21DX15DX64.2L	
	263-23301-03	PISTON PIN	-6665	2	21DX15DX64.2L	263-23301-23
360	263-23401-03	PISTON	-	2	STD (80DX55H)	
361	263-23402-03	PISTON	-	2	0.25 O.S.(80DX55H)	
362	263-23403-03	PISTON	-	2	0.50 O.S.(80DX55H)	
370	263-23501-17	PISTON RING SET	-	2	STD (80D)	
371	263-23502-17	PISTON RING SET	-	2	0.25 O.S.(80D)	
372	263-23503-17	PISTON RING SET	-	2	0.50 O.S.(80D)	
380	056-52100-20	CLIP	-	4	22.1DX1.4D	

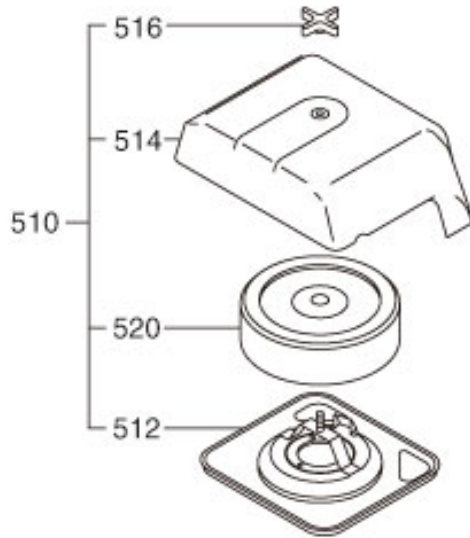
3 INTAKE EXHAUST



REF.	PART NUMBER	PART NAME	CODE NO.	QTY	REMARKS	INTERCHANGE
10	280-31701-13	CAM SHAFT	-	1	L=169 133DX12B N=66	
50	263-33301-A3	TAPPET	-	4	27DX9DX48L	
60	246-33611-03	VALVE SPRING	-	4	22.2DX2.9DX37L N=6.5	
70	246-33711-13	SPRING RETAINER	-	4	7.6DX26DX8T	
80	263-33401-03	INTAKE VALVE	-	2	35DX6DX79.8L	
90	263-33502-13	EXHAUST VALVE	-	2	31DX6DX80.3L	
95	246-35501-03	COLLET-VALVE	-	8		
210	263-35321-B1	PUSH ROD CP	-	4	8DX138.5L	
220	267-36102-03	ROCKER ARM	7153-	4		
	267-36101-13	ROCKER ARM	-7152	4		267-36102-03
230	261-35801-13	BOLT(PIVOT)	-	4		263-35801-03
235	267-35701-03	PIVOT	-	4		
240	017-00601-10	NUT	-	4	M6X0.75X3.6H	
260	263-37001-A3	GUIDE PLATE	-	2		
330	263-37012-A1	BRACKET CP(SEL SIDE)	-	1		
340	270-35201-01	GASKET CP (MUFFLER)	-	3	T=0.4 30D 8.5DX52P	
350	018-00800-10	FLANGE NUT	-	6	M8X1.25X17DX7.5H	
370	001-14081-60	BOLT AND WASHER AY	-	2	M8X1.25X16L W/W,SW	
500	280-33001-C3	INTAKE MANIFOLD	-	1		
555	263-35503-A3	GASKET(IN MANIFOLD)	-	2	T=0.4 31D 8.5DX52P	
580	011-00600-20	FLANGE BOLT	-	3	M6X1.0X14DX12L	
590	002-38080-00	FLANGE NUT	-	4	M8X1.25X17DX7.5H	
850	263-18003-03	RUBBER PIPE	-	1	14.5DX20.5D FORMED	
853	056-12000-20	HOSE CLAMP	-	2	20DX10BX1T	
920	263-91723-03	LABEL(TRADE MARK)	6880-	1		
	263-91709-03	LABEL(TRADE MARK)	-6879	1	50X95 ENGLISH	

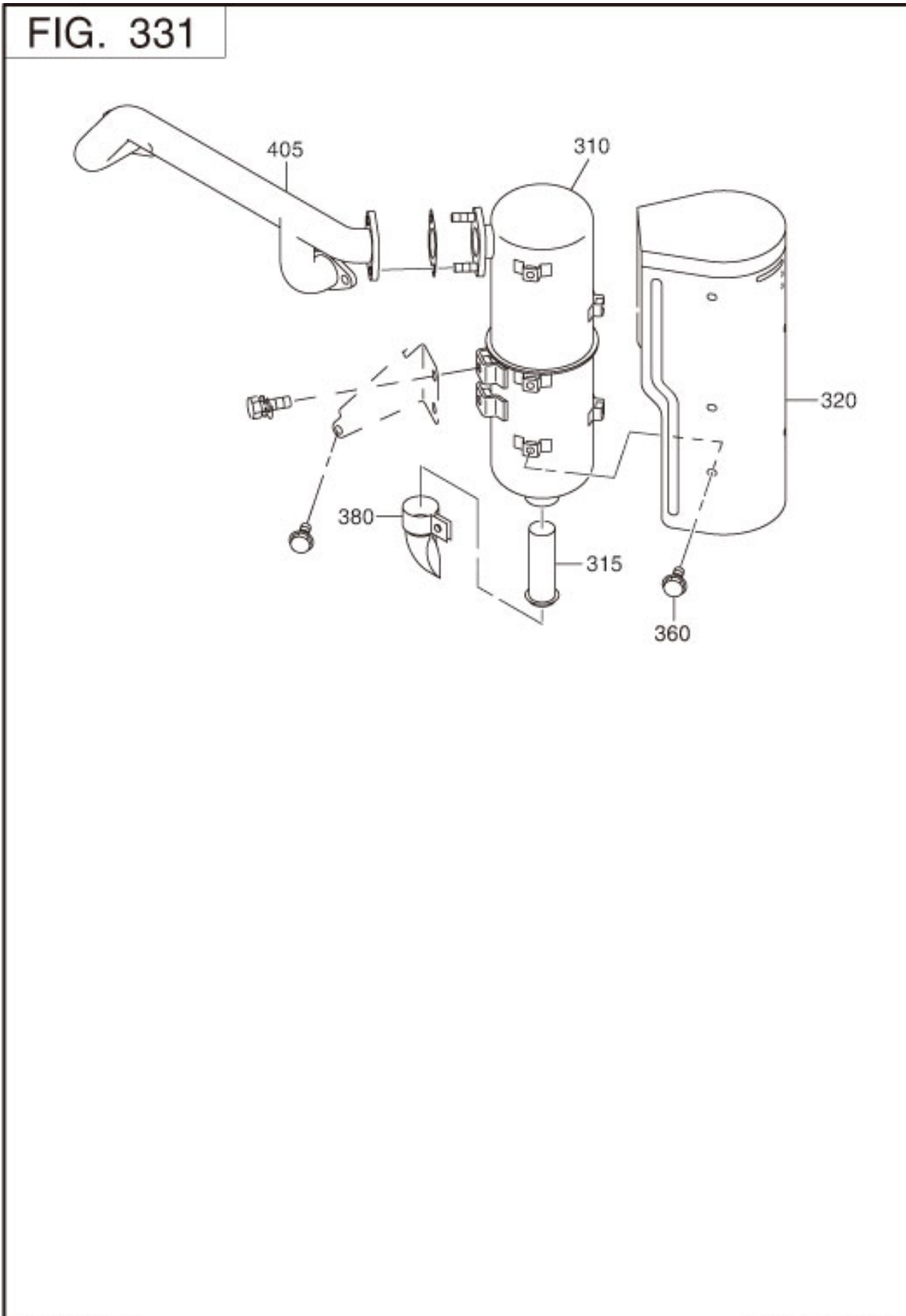
3 INTAKE,EXHAUST GROUP

FIG. 315



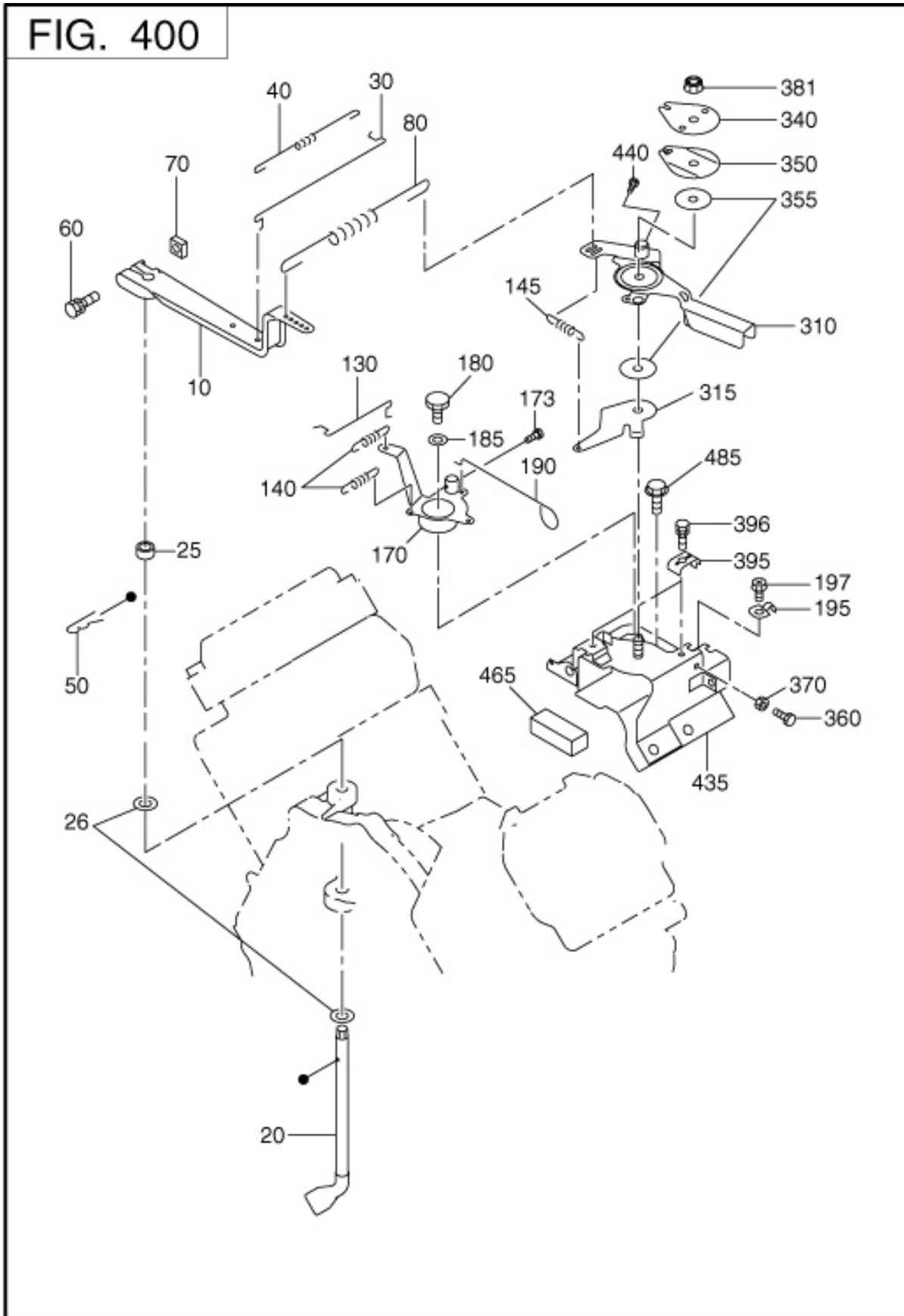
REF.	PART NUMBER	PART NAME	CODE NO.	QTY	REMARKS	INTERCHANGE
510	280-32601-A0	AIR CLEANER AY	-	1		
512	280-32620-A1	CLEANER BASE CP	-	1		
514	263-32630-03	CLEANER COVER	-	1		
516	263-32640-01	WING NUT	-	1		
520	263-32610-A1	CLEANER ELEMENT CP	-	1		

3 INTAKE EXHAUST



REF.	PART NUMBER	PART NAME	CODE NO.	QTY	REMARKS	INTERCHANGE
310	263-30202-01	MUFFLER CP	-	1		
320	263-34211-01	MUFFLER COVER CP	-	1		
360	011-00600-10	FLANGE BOLT	-	8	M6X1.0X14DX8L	
380	263-37301-H1	DEFLECTER AY	6705-	1		
	263-37301-B1	DEFLECTER AY	-6704	1		
405	263-34102-01	EXHAUST PIPE	-	1		

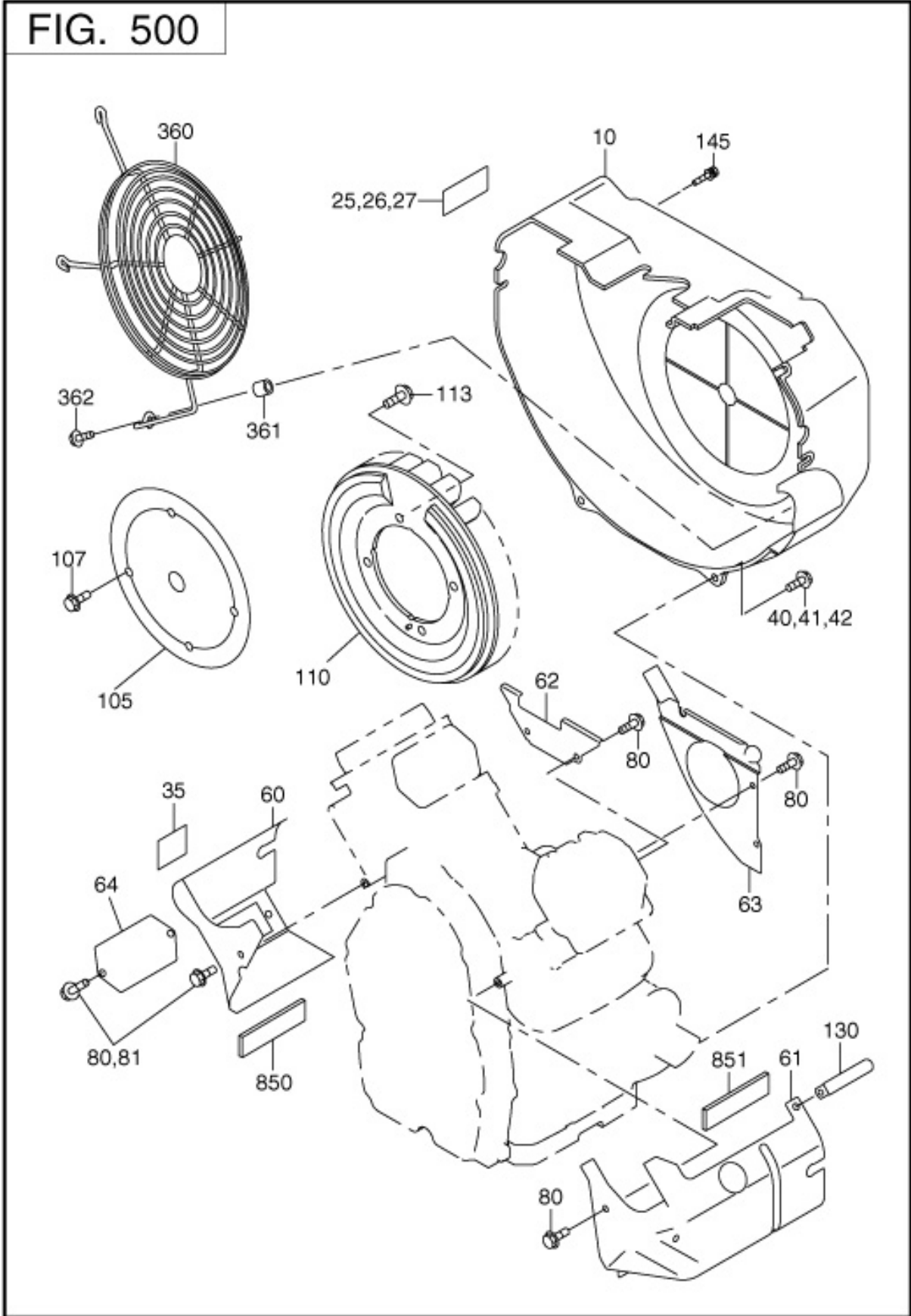
4 GOVERNOR GROUP



REF.	PART NUMBER	PART NAME	CODE NO.	QTY	REMARKS	INTERCHANGE
10	263-42301-B3	GOVERNOR LEVER	-	1		
20	263-42201-A3	GOVERNOR SHAFT	-	1		
25	X23-00801-50	SPACER	-	1	8.3DX11.9DX6.4T	
26	003-10080-00	WASHER	-	2	8.5DX16DX1.2T	
30	263-42701-A3	GOVERNOR ROD	-	1		
40	263-42801-03	ROD SPRING	-	1	6DX0.5DX102L N=29	
50	005-11060-01	SNAP PIN	-	1		
60	001-14063-00	BOLT AND WASHER AY	-	1	M6X1.0X30L W/W,SW	
70	018-60600-20	NUT	-	1	M6X1.0X4.9H SQUARE	
80	263-42503-A3	GOVERNOR SPRING	-	1	10.5DX1.2DX144L N=36	
130	263-46011-A3	CHOKE CONTROL ROD	-	1		
140	261-45201-03	RETURN SPRING	-	2	6.8DX0.7DX35L N=15	
170	263-46001-01	CHOKE CONTROL LINKCP	-	1	W/SWIVEL	
173	004-31040-80	SCREW	-	1	M4X0.7X8L	
180	226-43101-01	LINK PIVOT CP	-	1		
185	003-22100-00	WAVED WASHER	-	1		
190	263-43901-A3	CHOKE KNOB	-	1		
195	263-46010-03	CLAMP(CHOKE KNOB)	-	1		
197	015-20500-10	TAPPING SCREW	-	1	M5X10DX10L	
310	263-43301-01	SPEED CONTROL LEV CP	-	1	W/SWIVEL	
340	227-43501-13	STOP PLATE	-	1		
350	263-45002-03	SPRING WASHER	-	1		
355	021-70600-30	FRICTION WASHER	-	2	6.5DX33DX0.6T FIBER	
360	011-50500-20	BOLT	-	1	M5X0.8X35L	
370	002-27050-00	NUT	-	1		
381	017-60600-20	SELF LOCK NUT	-	1	M6X1.0X13DX6.9H	
395	261-43901-03	CLAMP	-	2		
396	001-17052-00	BOLT & WASHER AY	-	2		
435	263-45011-A2	BRACKET UN(SPD CTL)	6849-	1		
	263-45011-02	BRACKET UN(SPD CTL)	-6848	1		263-45011-A2

REF.	PART NUMBER	PART NAME	CODE NO.	QTY	REMARKS	INTERCHANGE
440	004-31040-80	SCREW	-	1	M4X0.7X8L	
485	011-00600-20	FLANGE BOLT	-	2	M6X1.0X14DX12L	

5 COOLING,STARTING GR

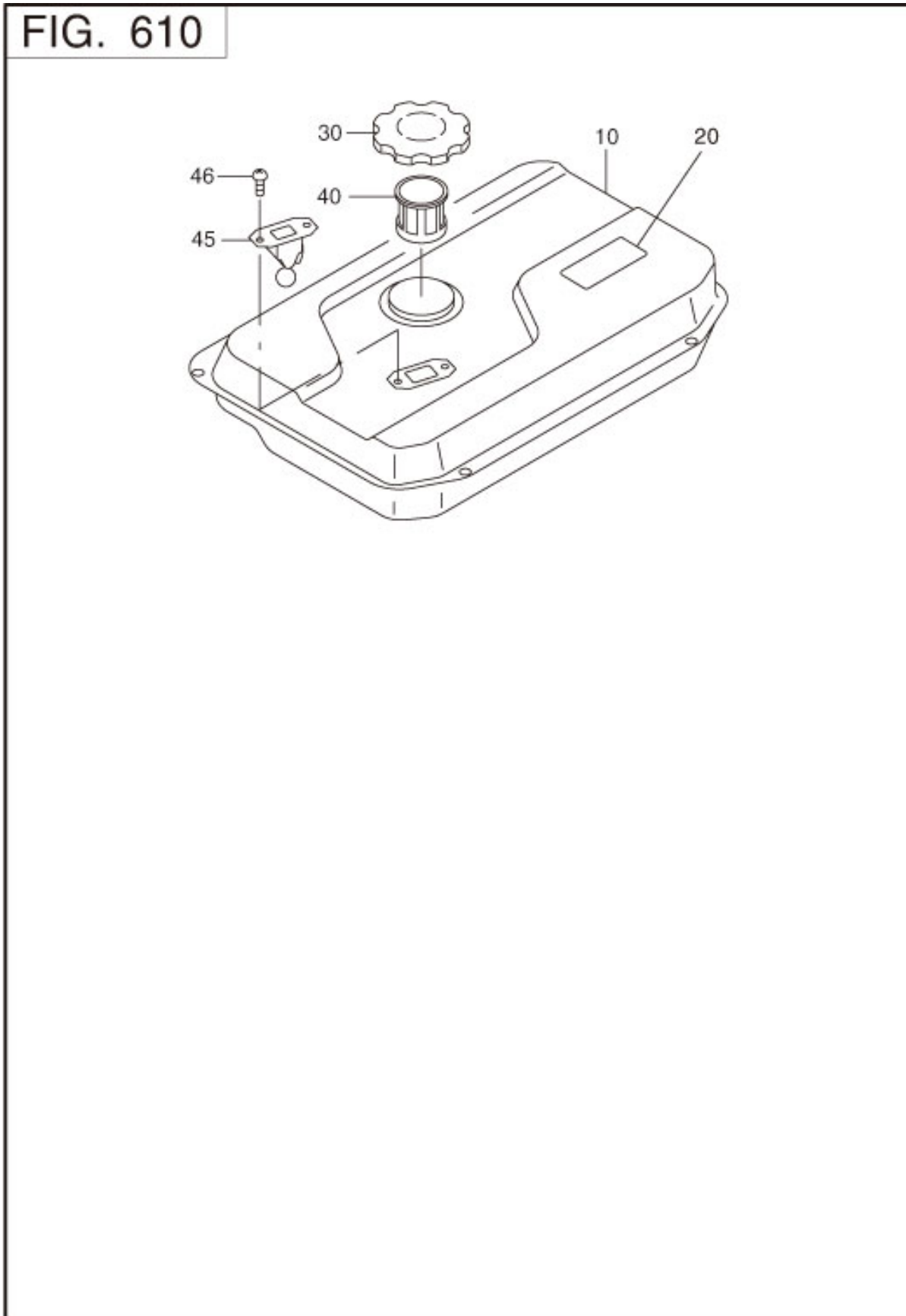


REF.	PART NUMBER	PART NAME	CODE NO.	QTY	REMARKS	INTERCHANGE
10	263-51121-B2	BLOWER HOUSING UN	-	1		
25	073-20049-80	LABEL(CAUTION)	-	1	38X80 JAPAN	
35	263-91803-03	LABEL(ENGINE NAME)	-	1	38X38 JAPAN	
40	011-00600-30	FLANGE BOLT	-	6	M6X1.0X14DX14L	
41	011-00601-40	FLANGE BOLT	-	2	M6X1.0X14DX18L	
60	263-52612-A1	CYLINDER BAFFLE 1 CP	-	1		
61	263-52704-A1	CYLINDER BAFFLE 2 CP	-	1		
62	263-52801-03	CYLINDER BAFFLE 3	-	1		
63	263-52912-A2	CYLINDER BAFFLE 4 UN	-	1		
80	011-00600-20	FLANGE BOLT	-	8	M6X1.0X14DX12L	
110	263-54101-A2	COOLING BLOWER UN	6727-	1		
	263-54101-02	COOLING BLOWER UN	-6726	1		
113	001-14061-60	BOLT AND WASHER AY	-	4	M6X1.0X16L W/W,SW	

REF.	PART NUMBER	PART NAME	CODE NO.	QTY	REMARKS	INTERCHANGE
55	263-65012-A3	FILTER,FUEL	-	1		
80	263-68006-B3	RUBBER PIPE	-	1	6.4DX12.7DX430L	
81	263-68007-B3	RUBBER PIPE	-	1	6.4DX12.7DX80L	
90	263-68501-03	HOSE CLAMP	-	2	11.4DX7.9BX0.7T	
91	263-68501-03	HOSE CLAMP	-	2	11.4DX7.9BX0.7T	
183	056-61000-21	CLAMP	-	1	10DXM6X15LX0.6T	
230	085-10301-10	RUBBER PIPE	-	1	3DX6DX350L	085-10300-00
235	206-75501-01	CLAMP CP	-	2	10DXM6X12BX0.6T	
270	263-63603-01	OIL GAUGE CP	-	1		
290	263-66201-A3	GASKET(CARBURETOR)	-	1	T=0.4 34D 8.5DX84.5P	
510	267-62201-10	FUEL PUMP AY	-	1		
515	263-65002-A3	BRACKET(FUEL PUMP)	-	1		
520	263-62653-B1	PULSE PIPE CP	-	1		
522	263-68008-B3	RUBBER PIPE	-	1	6.4DX12.7DX160L	
523	263-68501-03	HOSE CLAMP	-	2	11.4DX7.9BX0.7T	
540	011-00600-20	FLANGE BOLT	-	5	M6X1.0X14DX12L	
573	011-00801-10	FLANGE BOLT	-	2	M8X1.25X14DX80L	
610	263-63901-03	INNER ROTOR	-	1		
615	263-63902-03	OUTER ROTOR	-	1		
620	263-64001-11	OIL PUMP COVER CP	-	1		
623	044-03501-70	OIL SEAL	-	1	35DX48DX8B	
625	X24-08900-30	O RING	-	1	88.2DX94.4D	
640	011-00600-30	FLANGE BOLT	-	4	M6X1.0X14DX14L	
650	263-64302-02	OIL PUMP FILTER UN	-	1		
653	263-65011-A3	FLANGE BOLT	-	1		
660	248-65801-00	OIL FILTER AY	-	1		
670	263-65001-13	PLUG(OIL RELIEF)	-	1	M14X1.5X20DX12L	
673	003-70140-00	GASKET,ALUMINUM	-	1		
677	263-66001-03	SPRING(RELIEF VALVE)	6515-	1	7.8DX1DX25L N=8.5	
	248-65601-03	SPRING(RELIEF.VALVE)	-6514	1	7DX1DX23.5L N=7	

REF.	PART NUMBER	PART NAME	CODE NO.	QTY	REMARKS	INTERCHANGE
680	006-90308-00	STEEL BALL	-	1		
715	280-63602-A1	OIL FILLER CAP CP	-	1		
718	263-64414-A3	O RING	-	1	26.6DX31.9D	

6 FUEL LUBRICANT

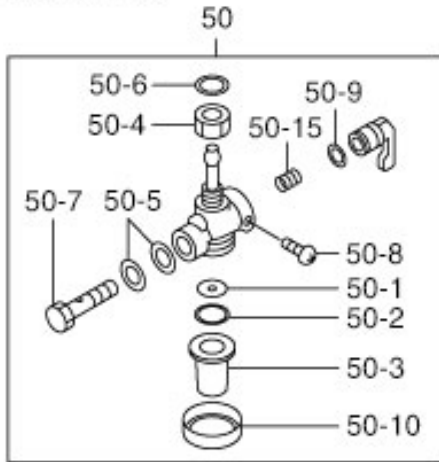


REF.	PART NUMBER	PART NAME	CODE NO.	QTY	REMARKS	INTERCHANGE
10	270-61711-01	FUEL TANK CP	-	1		
20	073-20046-90	LABEL (CAUTION)	-	1	60X140 JAPAN	
30	043-05900-11	FUEL TANK CAP AY	-	1	59DX102DX15H	
40	064-15400-11	FUEL FILTER	-	1	54DX58DX48H	
45	064-80018-00	FUEL GAUGE CP	-	1		
46	014-50500-40	SCREW(COUNTER HEAD)	-	2	M5X0.8X10L	

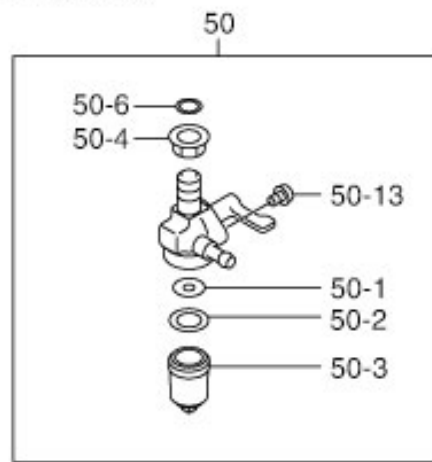
6 FUEL LUBRICANT

FIG. 630

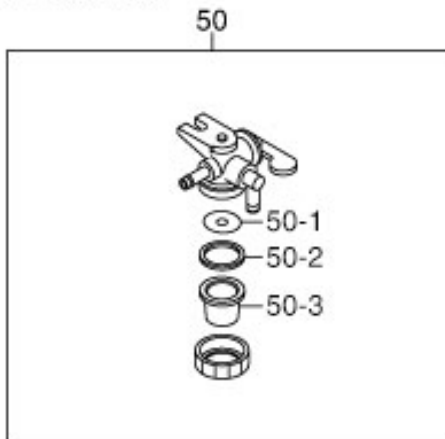
064-20021-01



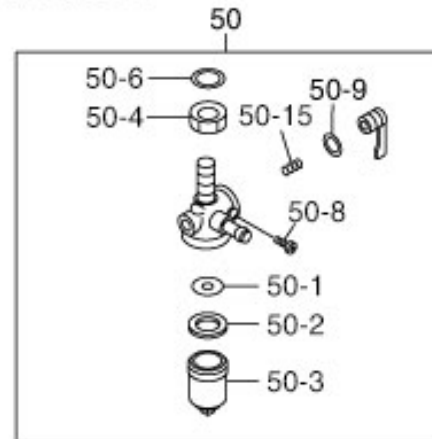
064-20084-00



064-20036-01
064-20095-00
064-20107-00

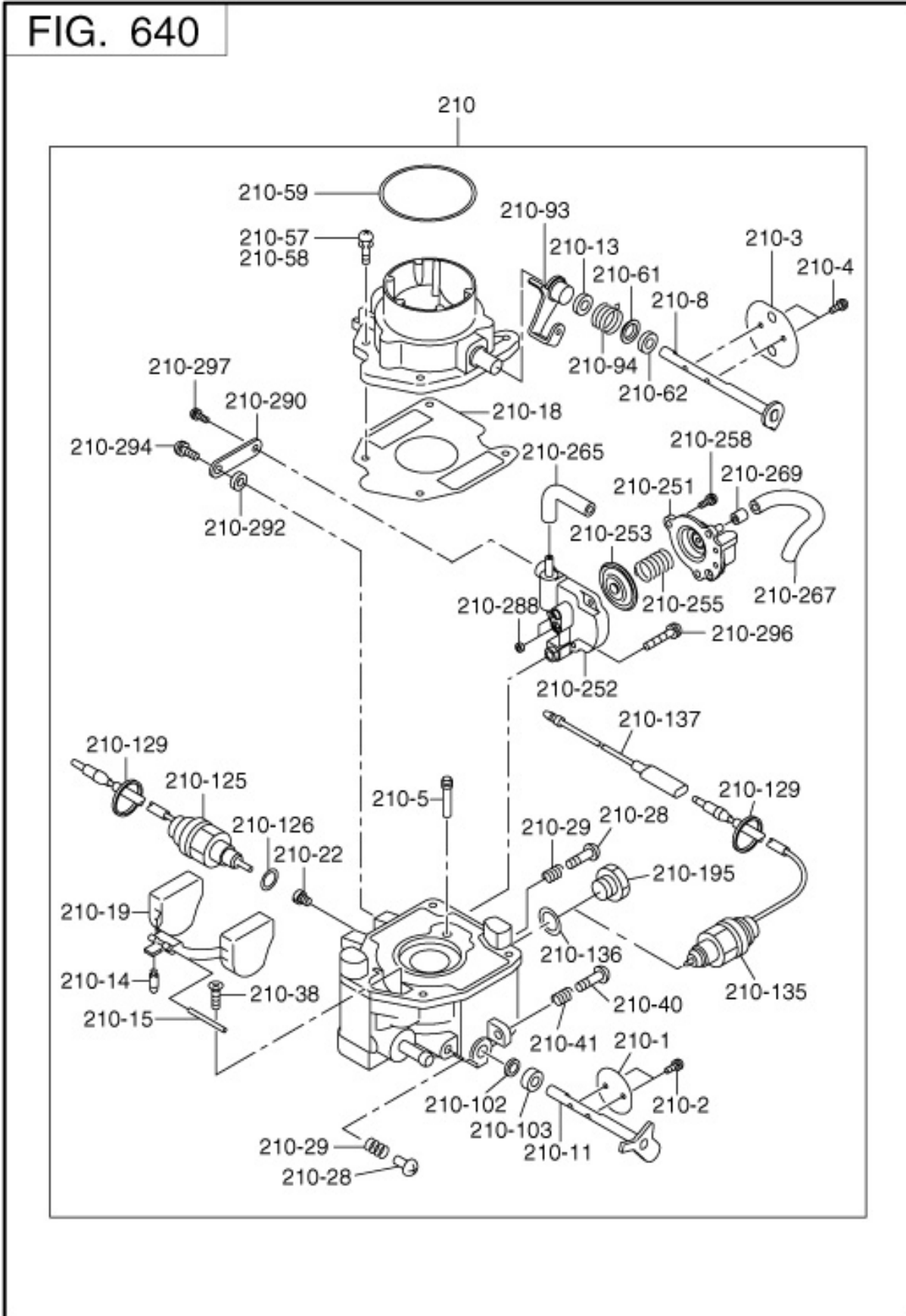


064-20100-01



REF.	PART NUMBER	PART NAME	CODE NO.	QTY	REMARKS	INTERCHANGE
50	064-20100-01	FUEL STRAINER AY	7153-	1		
	064-20084-00	FUEL STRAINER AY	-7152	1		064-20100-01
- 1	064-20041-10	FILTER	7153-	1		
- 2	064-20014-30	RUBBER PACKING	7153-	1		
	064-20064-10	PACKING	-7152	1		
- 3	064-20014-10	CUP	7153-	1		
	064-20078-10	CUP	-7152	1		
- 4	064-20100-30	LOCK NUT	7153-	1		
	064-20042-60	NUT	-7152	1		
- 6	064-20003-30	O-RING	7153-	2		
	243-66506-08	PACKING	-7152	1		
- 8	064-20027-90	BOLT	7153-	1		
- 13	064-20047-90	SCREW	-7152	2		
- 15	064-20032-30	SPRING	7153-	1		

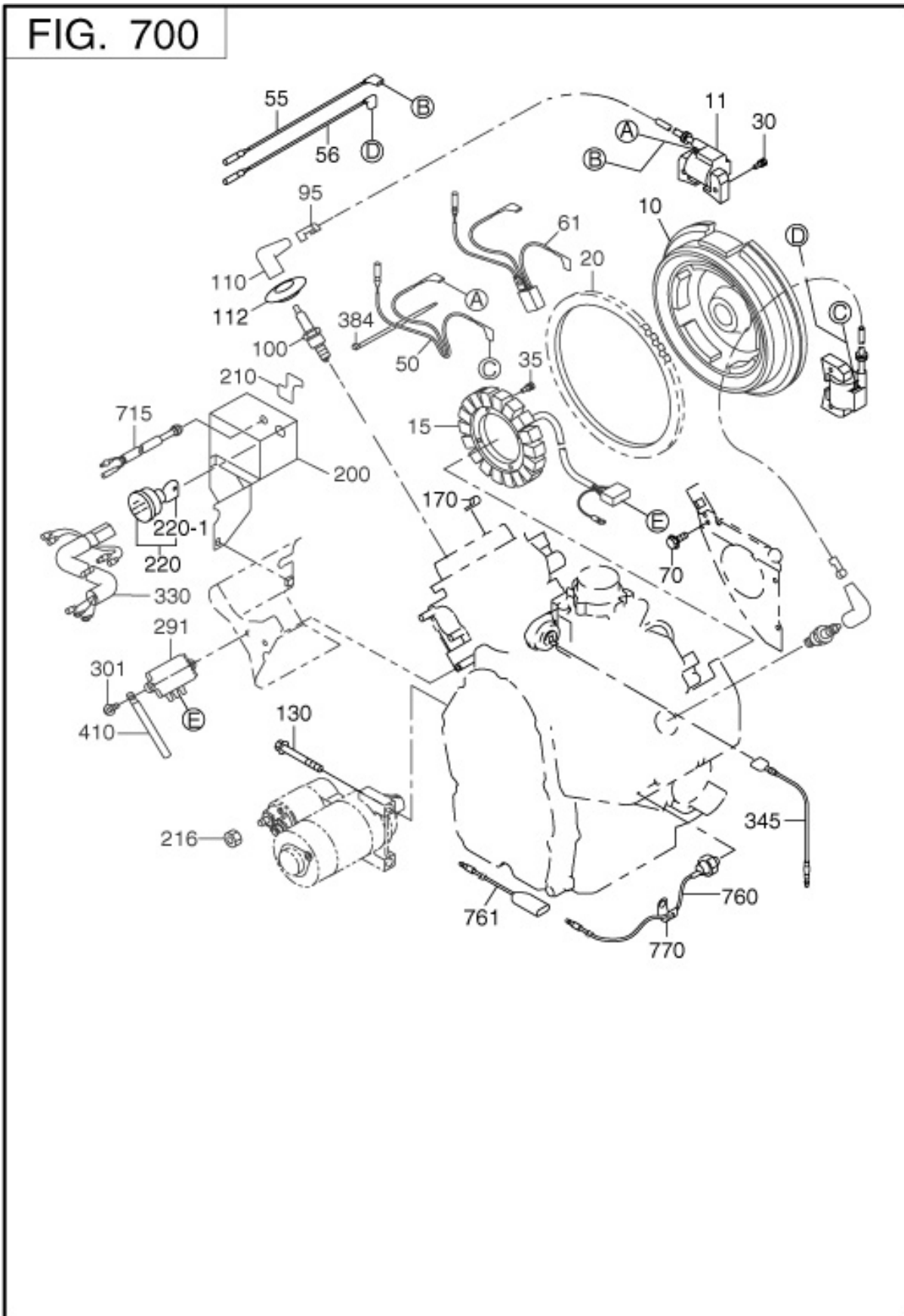
6 FUEL LUBRICANT GROUP



REF.	PART NUMBER	PART NAME	CODE NO.	QTY	REMARKS	INTERCHANGE
210	263-62581-10	CARBURETOR AY	-	1		
- 1	263-62535-08	VALVE,THROTTLE	-	1		
- 2	261-62352-08	SCREW,VALVE SET	-	2		
- 3	263-62528-08	VALVE,CHOKE	-	1		
- 4	258-62555-08	SCREW SET(VALVE)	-	2		
- 5	258-62420-08	JET(SLOW)	-	1		
- 8	263-62520-08	SHAFT ASSY,CHOKE	-	1		
- 11	263-62532-08	SHAFT ASSY,THROTTLE	-	1		
- 13	258-62551-08	RING(CHOKE LEVER)	-	1		
- 14	226-62501-08	VALVE,FLOAT	-	1		
- 15	258-62515-08	FLOAT PIN	-	1		
- 18	280-62545-08	GASKET,AIR HORN	-	1		
- 19	280-62505-08	FLOAT	-	1		
- 22	263-62400-08	JET,MAIN	-	1		
- 28	215-62353-08	SCREW,DRAIN	-	1		
- 29	215-62446-08	SPRING,DRAIN	-	1		
- 38	258-62556-08	SCREW SET(FLOAT PIN)	-	1		
- 40	263-62451-08	SCREW,THRO.ADJUST	-	1		
- 41	258-62445-08	SPRING(ADJUST SCREW)	-	1		
- 57	258-62450-08	SCREW SET(AIR HORN)	-	4		
- 59	263-62560-08	O-RING,AIR HORN	-	1		
- 61	280-62551-08	COLLAR,CHOKE	-	1		
- 62	258-62554-08	FILTER(CHOKE SHAFT)	-	1		
- 93	263-62524-08	LEVER ASSY,CHOKE	-	1		
- 94	263-62445-08	SPRING,CHOKE	-	1		
-102	226-62580-08	FILTER,AIR	-	1		
-103	258-62570-08	COLLAR(THRO.SHAFT)	-	1		
-125	263-62556-08	VALVE CP,(SOLENOID)	-	1		
-126	258-62546-08	GASKET,MAIN PASSAGE	-	1		
-129	258-62566-08	CLAMP(SOLENOID)WIRE	-	1		

REF.	PART NUMBER	PART NAME	CODE NO.	QTY	REMARKS	INTERCHANGE
-136	263-62555-08	GASKET	-	1		
-195	263-62552-08	PLUG	-	1		

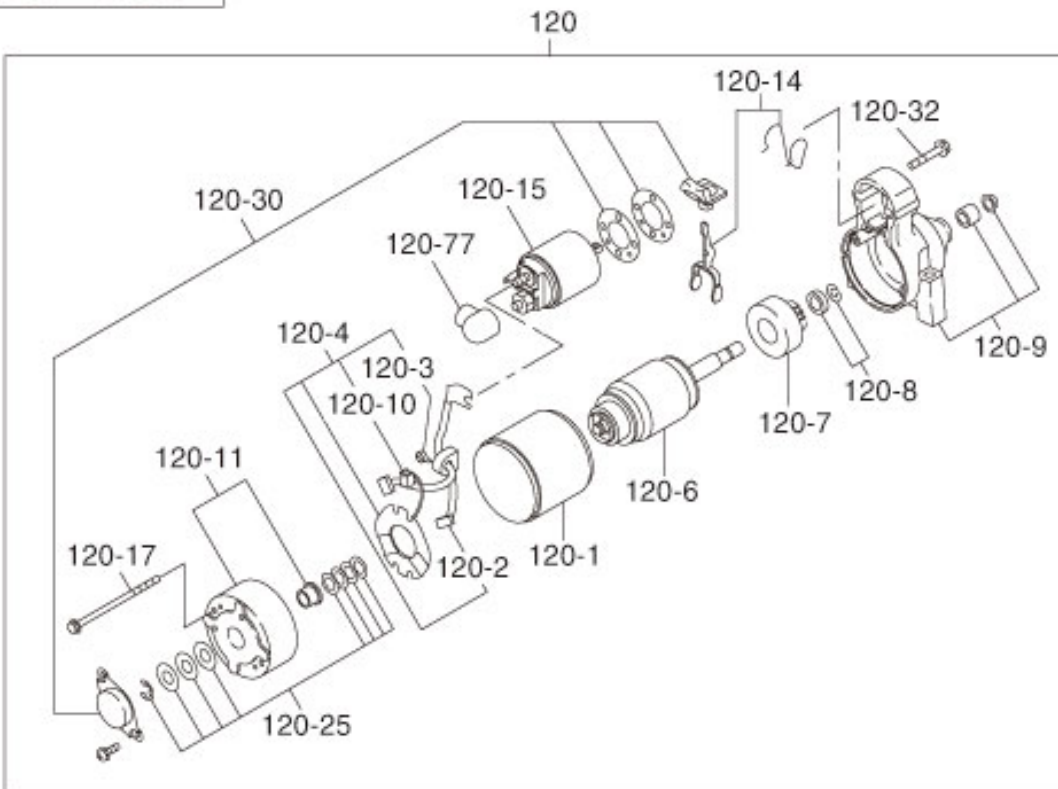
7 ELECTRIC DEVICE GR



REF.	PART NUMBER	PART NAME	CODE NO.	QTY	REMARKS	INTERCHANGE
10	263-77202-11	FLYWHEEL CP	-	1		
11	263-78203-01	IGNITION COIL CP	6757-	2	MARK AK	
	263-78202-11	IGNITION COIL CP	-6756	2	MARK AE	
15	263-79411-A1	CHARGE COIL CP	-	1		
20	263-71001-03	RING GEAR	-	1	202DX233DX8.7B N=90	
30	001-14062-50	BOLT AND WASHER AY	-	4	M6X1.0X25L W/W,SW	
35	001-16052-00	BOLT AND WASHER AY	6576-	4		
	001-17052-00	BOLT & WASHER AY	6515-6575	4		
	013-10500-40	SCREW AND WASHER AY	-6514	4	M5X0.8X20L W/SW	
50	263-73126-H1	WIRE CP(IG.COIL)	6757-	1	BLACK	
61	KU3-11052-21	STOP DIODE CP	-6756	1		
70	011-00600-10	FLANGE BOLT	-6756	1	M6X1.0X14DX8L	
95	065-90000-10	PLUG TERMINAL	-	2		
100	065-01402-80	SPARK PLUG	-	2	NGK BPR5ES	
110	X65-51000-10	SPARK PLUG CAP	-	2		
130	011-00801-00	FLANGE BOLT	-	2	M8X1.25X17DX65L	
200	263-75121-01	CONTROL BOX CP	-	1		
210	263-95001-A3	LABEL,CONTROL BOX	-	1		
216	002-38080-00	FLANGE NUT	-	1	M8X1.25X17DX7.5H	
220	X66-00004-40	KEY SWITCH	-	1		
291	263-71901-01	REGULATOR CP	-	1		
301	011-00601-40	FLANGE BOLT	-	2	M6X1.0X14DX18L	
330	280-73101-A1	WIRING HARNESS	-	1		
384	056-30000-10	WIRE BAND	-	3	4.5BX1.2TX200L	
410	056-60002-50	CLAMP	-	1	6.5DX10BX95LX0.6T	
715	263-77301-10	LED LAMP AY	-	1		
760	263-73102-11	WIRE AY(OIL PRE.SW.)	-	1	L=900 GRAY	
770	206-75501-01	CLAMP CP	-	2	10DXM6X12BX0.6T	

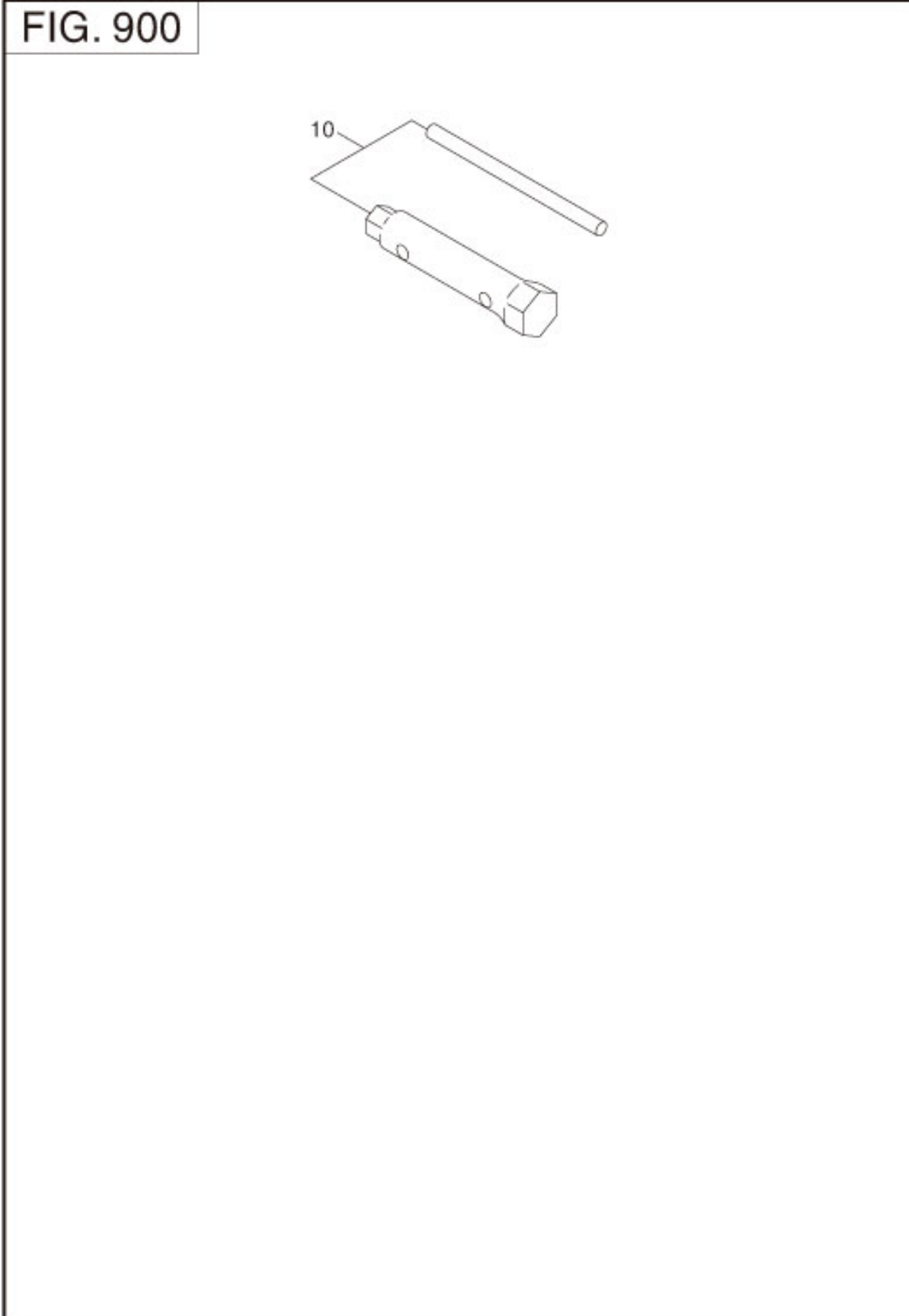
7 ELECTRIC DEVICE GR

FIG. 730



REF.	PART NUMBER	PART NAME	CODE NO.	QTY	REMARKS	INTERCHANGE
120	263-70502-A0	STARTING MOTOR AY	-	1		
- 1	255-70580-08	YOKE AY	-	1		
- 2	255-70551-08	BRUSH SET	-	1		
- 3	228-70516-08	BRUSH SPRING	-	4		
- 4	255-70531-08	BRUSH HOLDER AY	-	1		
- 6	263-70510-08	ARMATURE ASS'Y	-	1		
- 7	255-70521-08	PINION AY	-	1		
- 8	210-70534-08	PINION STOPPER SET	-	1		
- 9	263-70500-08	GEAR CASE ASS'Y	-	1		
- 10	228-70514-08	BRUSH (-)	-	2		
- 11	263-70505-08	REAR COVER ASS'Y	-	1		
- 14	243-70525-08	SHIFT LEVER KIT	-	1		
- 15	263-70515-08	MAGNETIC SWITCH AY	-	1		
- 17	207-70524-08	THROUGH BOLT	-	2		
- 25	263-70550-08	THRUST WASHER KIT	-	1		
- 30	255-70570-08	DUST COVER KIT	-	1		
- 32	263-70551-08	06 BOLT(M6X37)	-	2		
- 77	207-70526-08	RUBBER CAP BS	-	1		

9 ACCESSORIES LABEL GR



REF.	PART NUMBER	PART NAME	CODE NO.	QTY	REMARKS	INTERCHANGE
10	227-90301-10	ACCESSORY TOOL KIT	-	1		