

# REPAIR GUIDELINE

## BACKPACK HARNESS\_BH1000



*Version: 1*

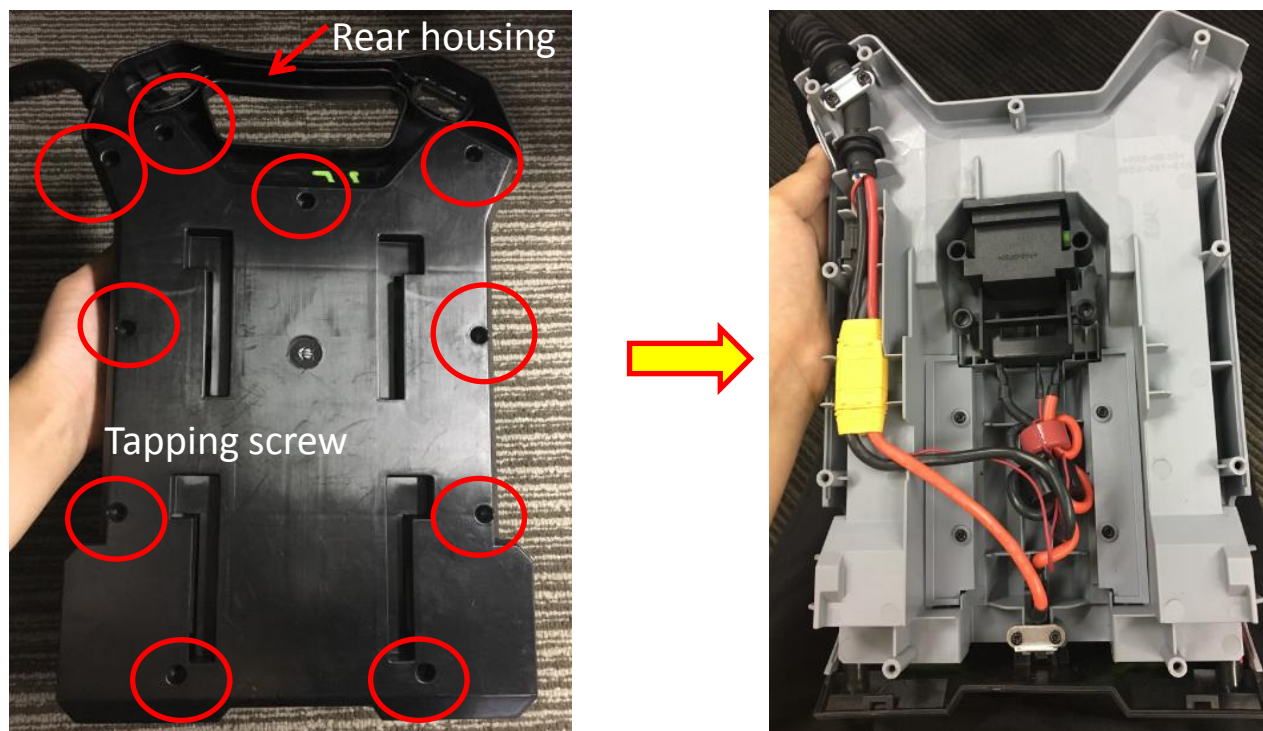
*Issue Date: 2017/09/11*

1. Remove the battery from the backpack harness.
2. Remove the strap and hook from harness (refer to the operator's manual).



Description	Part Number	QTY.
Backpack subassembly	2825497001	1
Hook	3129102001	1

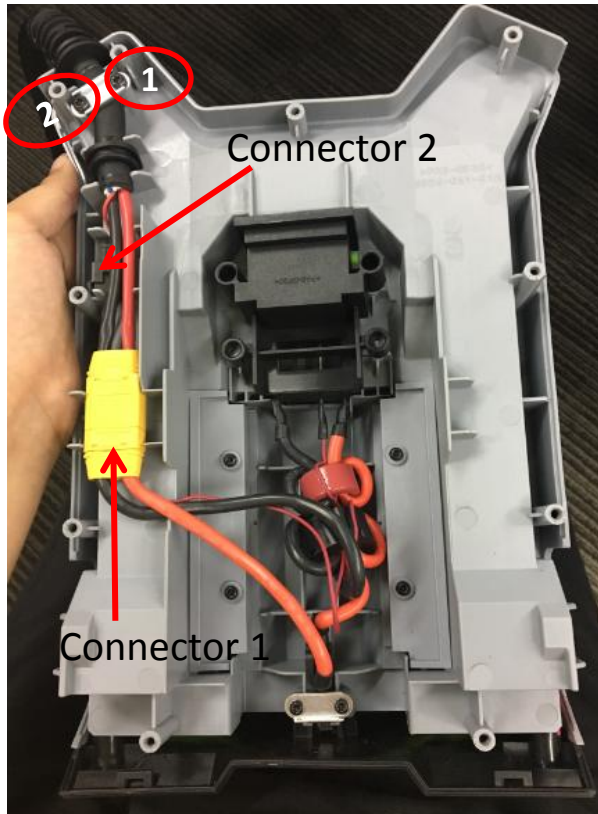
- Loosen and remove the 10 screws to disassemble the rear housing.



Description	Part Number	QTY.
Rear housing	3322283001	1
Tapping screw	5610294001	10



4. Loosen screw 1&2 to remove cord anchor, disconnect connectors 1&2 and remove the power cord ASSY. If power cord ASSY is broken, replace it with a new one.

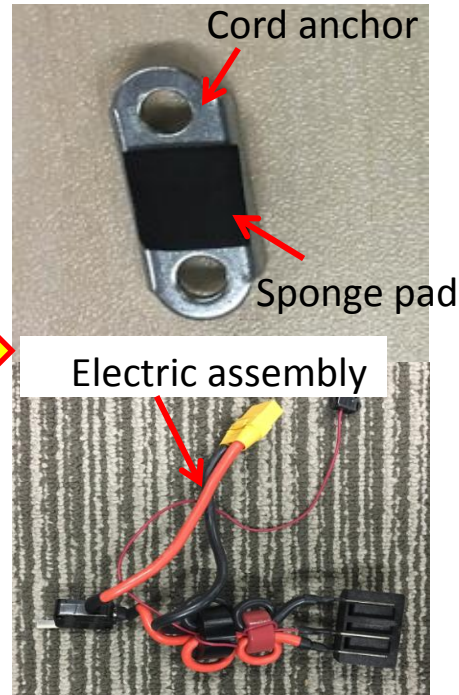
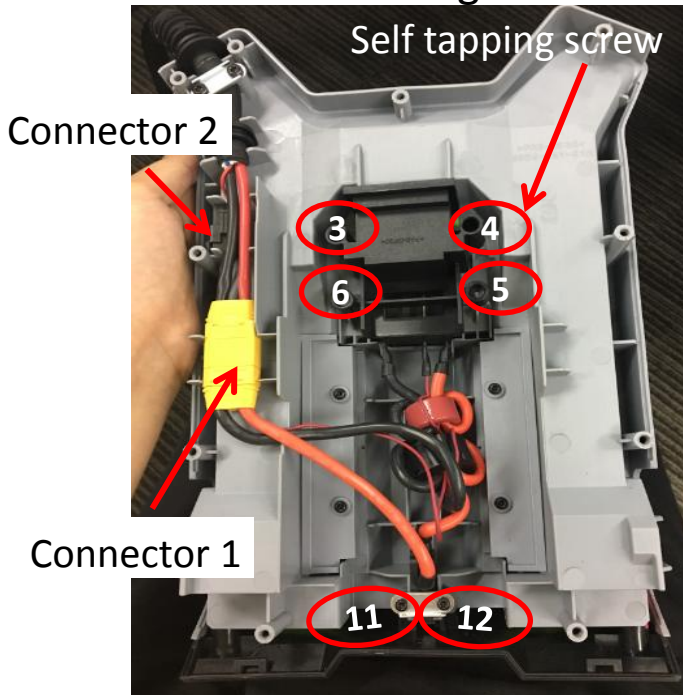


Note : Align the wires in the groove after replacing as shown in the picture below.



Description	Part Number	QTY.
Power cord ASSY	4810227001	1
Cord anchor	3700285001	1
Tapping screw	5610294001	2

- Loosen screws 3,4,5,6,11&12 then remove the cord anchor, which is attached with a sponge pad. Disconnect connectors 1&2 to totally separate the electric assembly from the front housing.

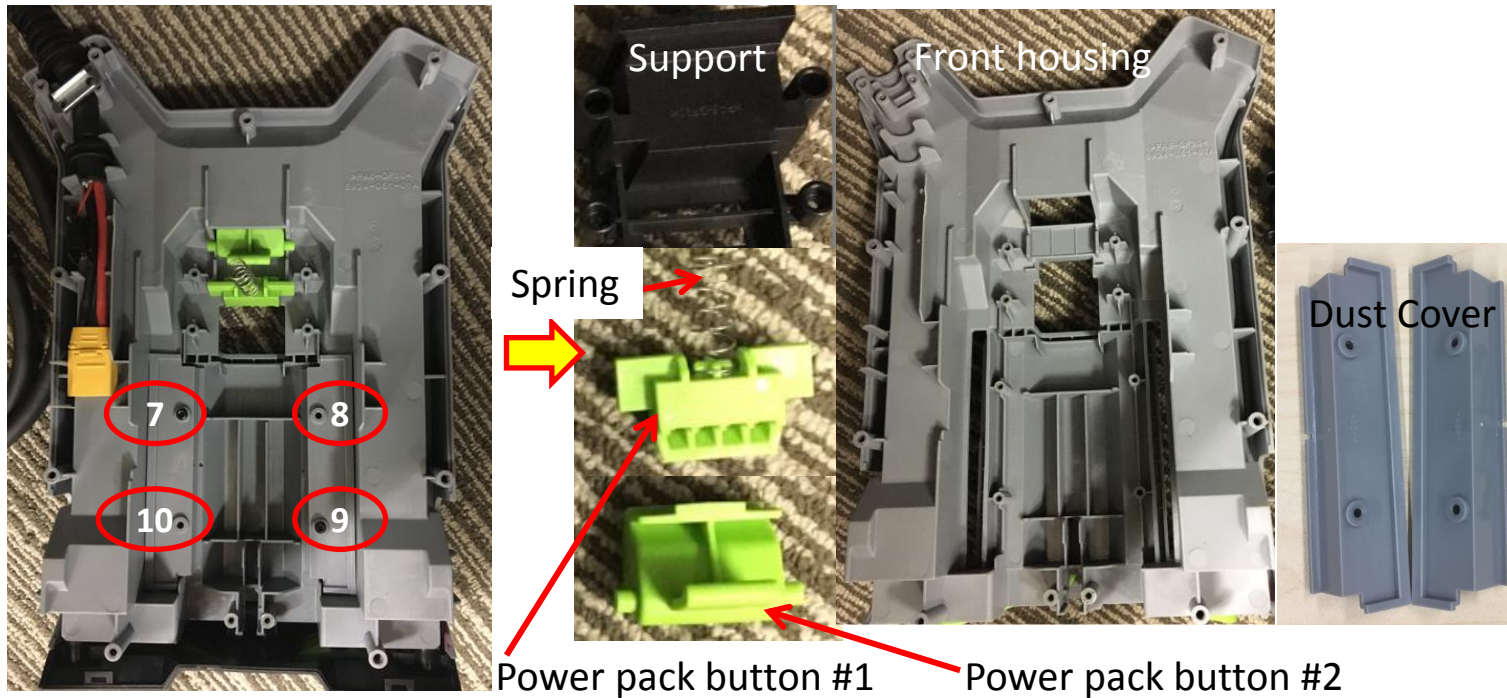


Note: Align the wires in the groove after replacing as show below.



Description	Part Number	QTY.
Self tapping screw	5610274001	10
Sponge pad	3706436001	1
Cord anchor	3700285001	1
Electric assembly	2830264001	1

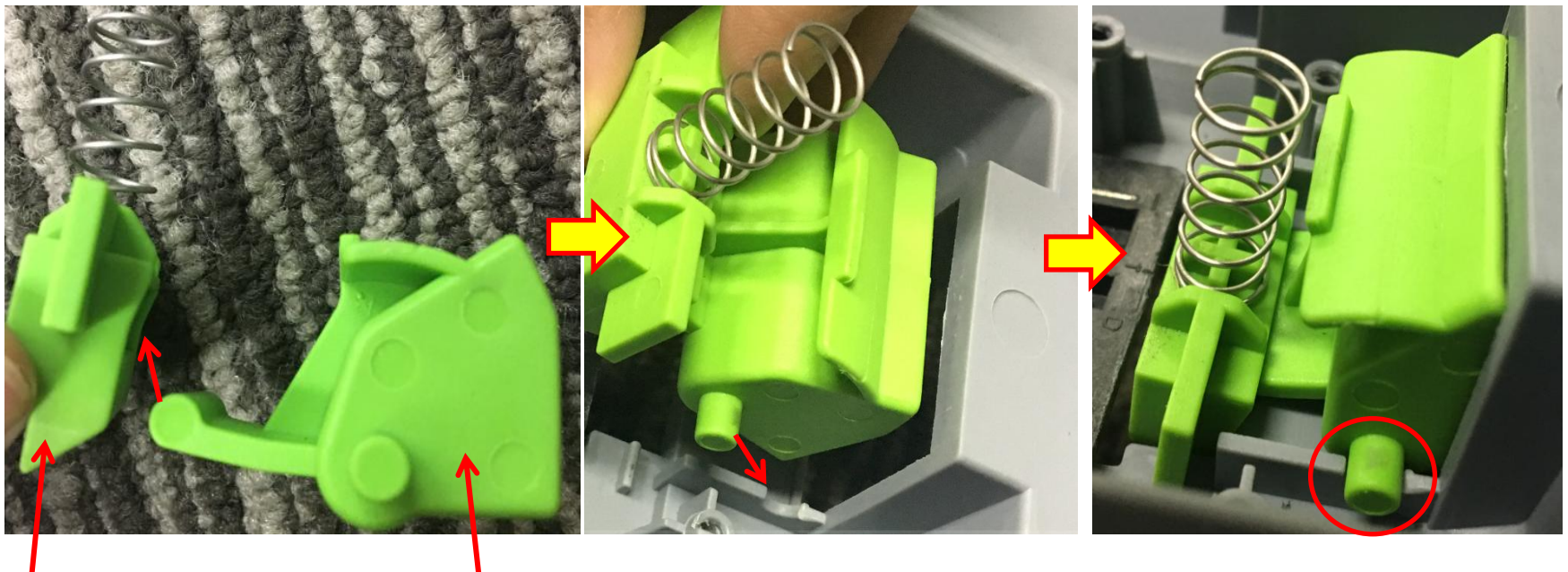
6. Loosen 7,8,9&10 to remove the dust cover. Replace the broken one in the below table.



Description	Part Number	QTY.	Description	Part Number	QTY.
Support	3128359001	1	Power pack button #2	3127498001	1
Spring	3660013003	1	Front housing	3129073001	1
Power pack button #1	3127497001	1	Dust cover	3128361001	2



**NOTICE:** When assembling the power pack button #1 and power pack button #2 into the front housing, pre-assemble the spring onto the power pack button #1 and then follow the steps below to locate the buttons into the groove of the housing.



Power pack button #1    Power pack button #2

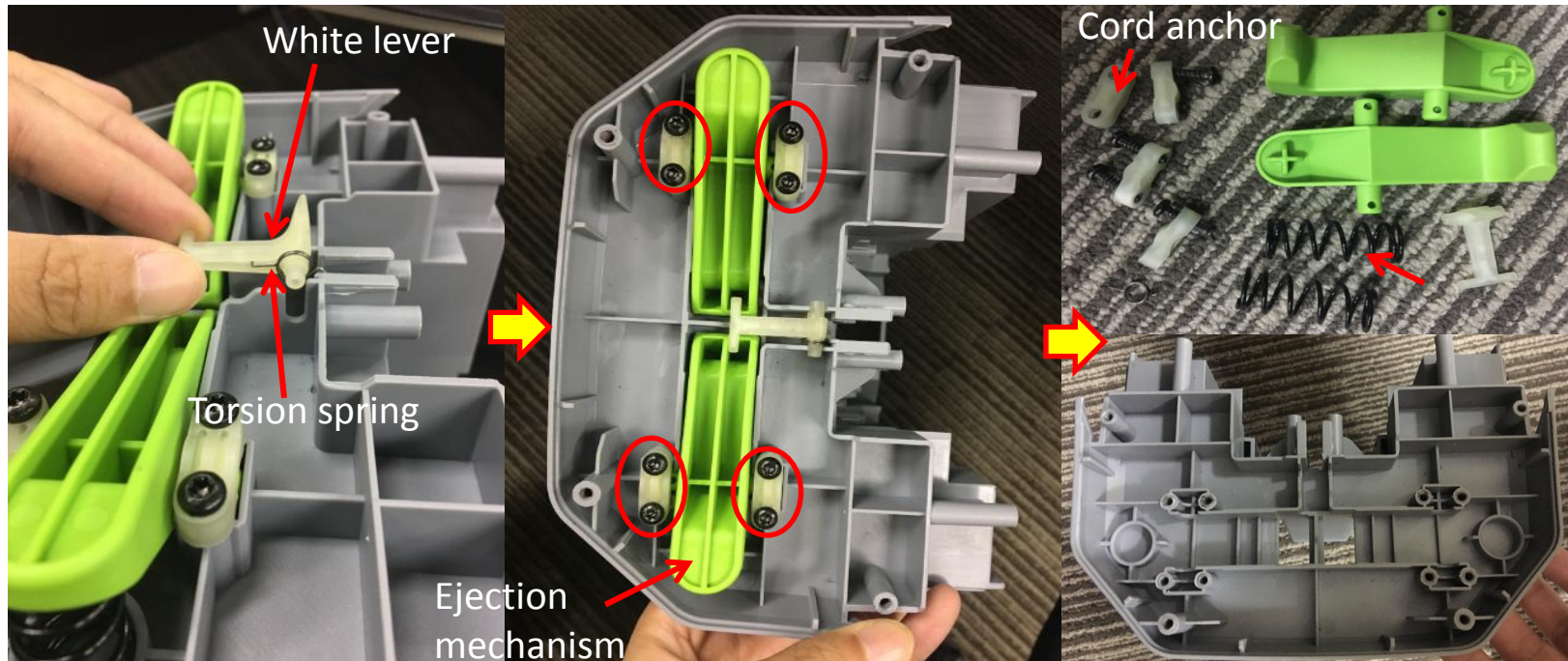
7. Loosen the 4 screws to remove the bottom support.



Description	Part Number	QTY.
Bottom support	3129071001	1
Tapping screw	5610294001	4



8. Remove the white lever and torsion spring. Remove 8 screws and cord anchor to disassemble the ejection mechanism. If any part is broken, replace it accordingly.



Description	Part Number	QTY.	Description	Part Number	QTY.
Ejection mechanism	3126773001	2	White lever	3126773001	1
Tapping screw	5610294001	8	Torsion spring	3660682001	1
Cord anchor	3122798001	4	Spring	3660306002	2

## 9. Assemble all parts in reverse order.



Note: There is no specific order for assembling the bottom support and the rear housing. Finally, assemble back the strap and the hook(refer to the operator's manual).

THE END