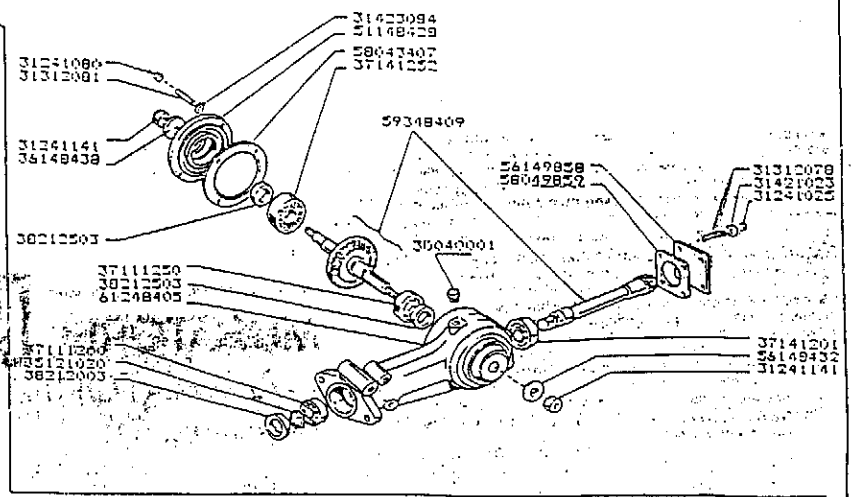
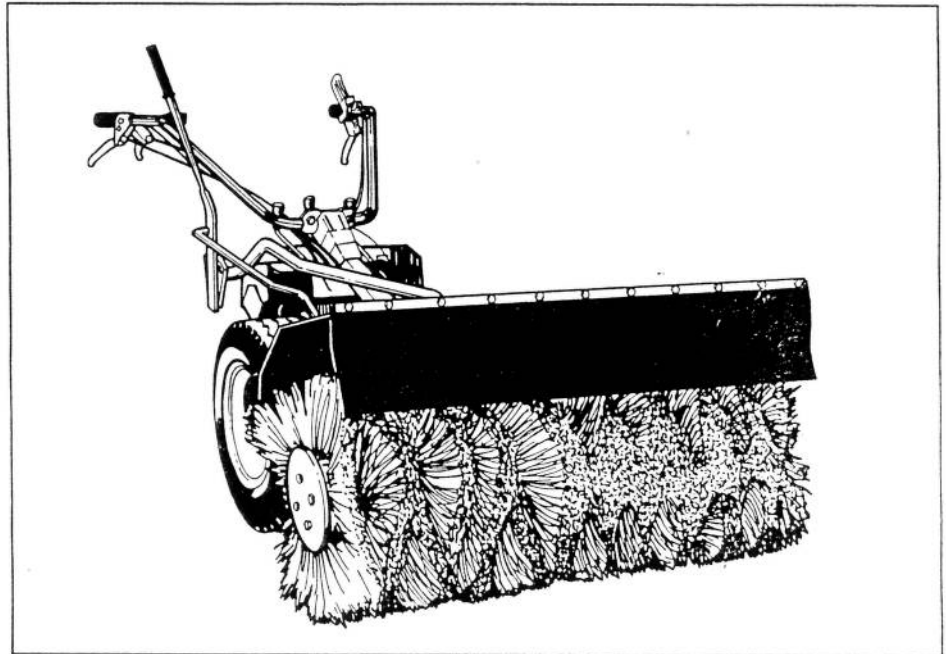


POS.	DENOMINAZIONE	Q.TA	CODICE
1	VITE TENDOXIO	1	500010010
2	RONDELLA PIANA Ø 11	1	510010008
3	DISCO FERMA SPAZZOLA	2	020300000
4	SPAZZOLA SAGOMATA - R 150.4061	4	020300000
5	SPAZZOLA A C - R 150.4062	4	020300000
6	SPINA R 25	2	500010000
7	CUSCINETTO 4205 2RS - N. 1274000	1	500020000
8	TAMBURO PORTASPAZZOLA	2	020300000
9	GRUPPO DI RINVIO	1	020101000
10	RIVOTE GIREVOLI - R 150.4060	2	012600000
11	ESAMBO VITE PASSAGGIO	2	011000008
12	TELAINO	1	020100000
13	DADO ESAG. M6 AUTOBLOC.	6	520002000
14	VITE TCMH 2X35	2	500015012
15	ROSETTA ELASTICA	2	510010012
16	DADO ESAG. M12 AUTOBLOC.	2	520003012
17	ADESIVO MATRICOLA	1	011500000
18	COFANO SUPERIORE	1	020300000
19	ADESIVO	1	010500000
20	ROSETTA PIANA Ø 6,5	3	510010006
21	VITE TCMH 35	3	500010008
22	GIUNTO CARDANICO - R 150.4063	1	020300000
23	DADO ESAG. M16 AUTOBLOC.	2	520001016
24	VITE SPECIALE - R 150.4064	2	021500000
25	TUBO CON FORCELLA - R 150.4064	1	020300000
26	ALBERO TRASMISSIONE 15x18	1	010203000
27	ADESIVO ROTAZIONE - R 150.4065	1	010203000
28	SUPPORTO AR	1	010203000
29	PERNO	1	510009000
30	ANELLO SEEGER	1	510009000
31	CUSCINETTO Ø 20 - N. 1263200	1	500001000
32	COPIGLIA AR 4	1	510010010
33	VITE TCMH 40	1	510010010
34	MOZZA	1	020901000
35	TRANTE INCLINAZIONE	1	020902000
36	STEGOLA	1	020902000
37	MANOPOLA Ø 22	1	020903000
38	CHIAVETTA 8x6x25 - N. 6522.00	1	500004000
39	GRANØ M10x20	1	510010010
40	RIVETTO Ø 4,5x16	5	500002000
41	GOMMA DI PROTEZIONE - R 150.4066	1	021000000
42	ANELLO SEEGER Ø 25	1	510011000
43	RONDELLA PIANA Ø 5	5	510003005
44	DADO NORMALE M10	2	500001100
45	CARTER PROTEZIONE GIUNTO	1	021100000
46	COPPIA RIPARIGIUNTO SX + DX	1	021200000



L 470.00

Width 40"
Diameter 20"
Weight 130 lb.
Height 23"
Power 6hp or more req'd
Hood steel
Shield flexible flap
Bristles polypropylene



All parts replaceable.
See illustrated parts list
on page 6.

OWNER'S MANUAL

Supplement to 600-700 Series Owner's Manual No. 901.00005.2



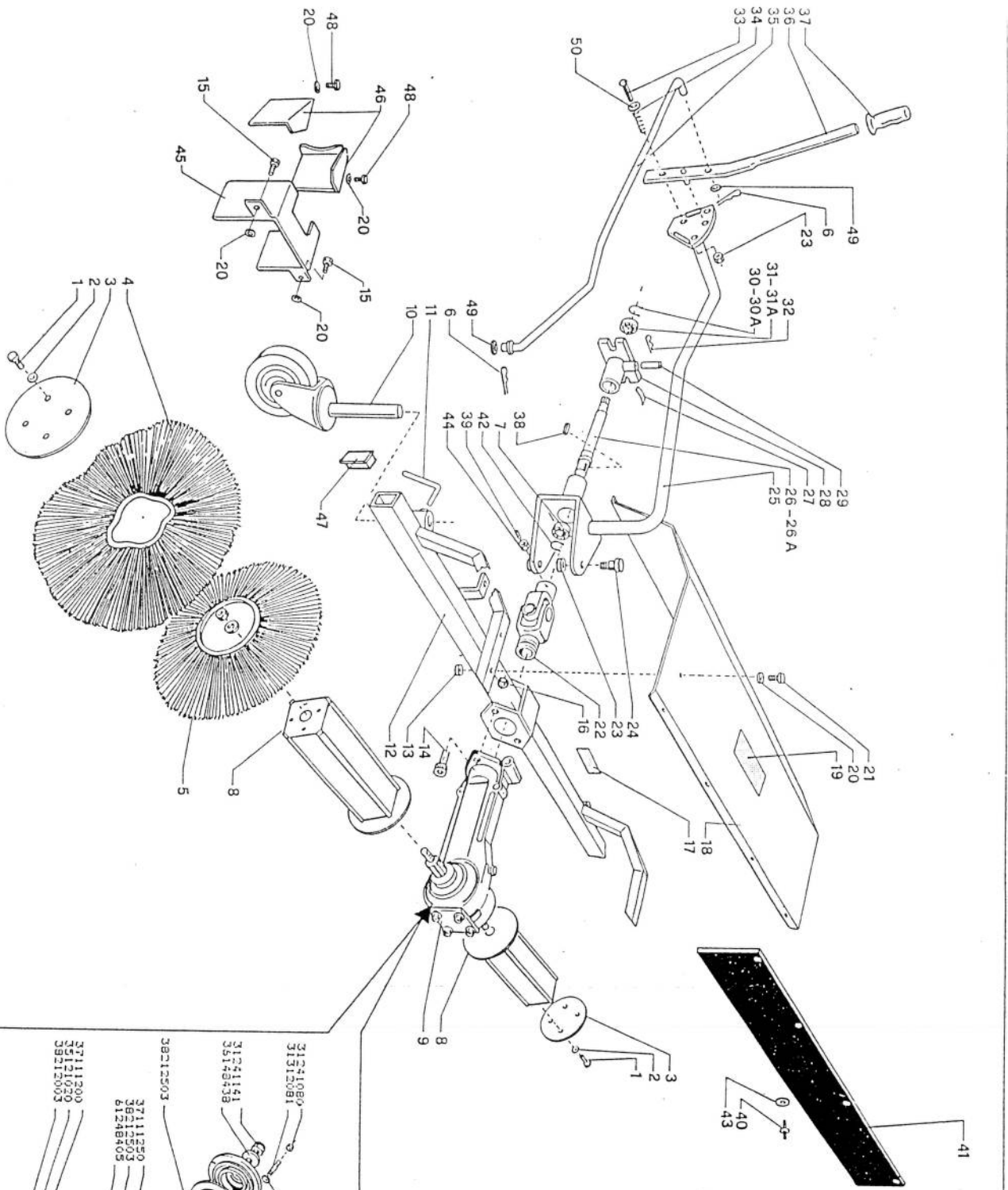
This symbol calls your attention to danger warnings printed in this manual or on the unit or attachment.



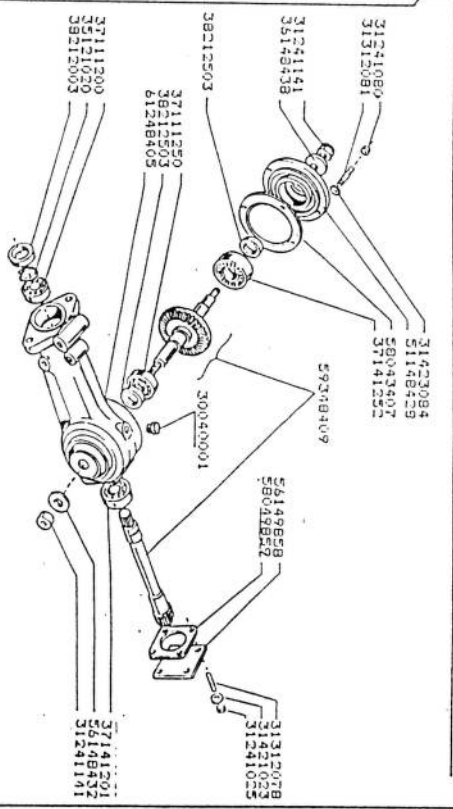
This symbol, placed over a picture or an object in it, says "NO!" Do not do, use or permit whatever is shown under the symbol.



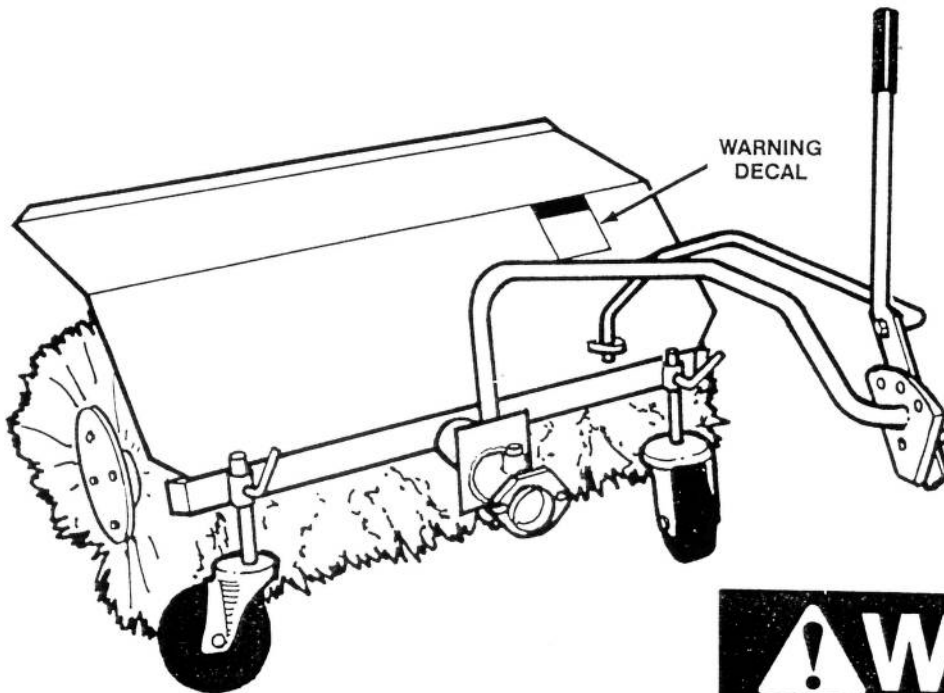
READ BOTH THE UNIT AND THE POWER SWEEPER OWNER'S
MANUALS BEFORE ATTEMPTING TO OPERATE THE SWEEPER.



POS.	DENOMINAZIONE	Q.TA'	CODICE
1	VITE M10 X 32	8	500031010
2	RODOLFO	8	510011000
3	DISCO FERRO SPAZZA	8	020400000
4	SPAZZOLA SAGONATA	16	035040000
5	SPAZZOLA A C	4	036000000
6	SRNA R 25	2	530001000
7	ELASCINETTO 6305 205	2	540001200
8	TAMBURO PORTA SPAZZOLA	2	020300000
9	GRUPPO DI RINVIO	2	030101000
10	RUOTE GHEVOLA	2	012800000
11	CAMMO VITE P15 X G 10	2	010000000
12	TRONCO ENG. M6 AUTORI. OC	10	530002000
13	VITE TEMA 6 X 45	2	500032012
14	VITE TEMA 6 X 45	2	510000413
15	DADO ENG. M12 MEDIO	2	011500000
16	ADERIVO METRICO	1	020300000
17	COPRANO SIFERMOIE	1	010400000
18	ADERIVO	1	500000440
19	ROSETTA P15 X 6 X 18	8	020700000
20	VITE M6 X 40	24	020000000
21	GIUNTO CANGIANTICO	1	500002010
22	DADO ENG. M10	2	020000000
23	VITE SPECIFICHELLA	1	030800000
24	ALBERO DI TRASMISSIONE 15 X 18	1	010200000
25	ALBERO DI TRASMISSIONE A 3 DENTI	1	010200000
26 A	ADERIVO ROT ZONE	1	010200000
27	SUPPORTO "I"	1	010200000
28	FERNO	1	510000000
29	ANELLO SELETOR E 20	1	510011000
30	ANELLO SELETOR E 25	1	540001035
30 A	CUSCINETTO 6204 2RS	1	530001000
31	CUSCINETTO 6205 2RS	1	530004010
31 A	VITE M10 X 60	1	020001500
32	MOLLA	1	020002000
33	TRAVANTE INCLINAZIONE	1	020002000
34	STECCOLA	1	510002000
35	M. ANOPOLA 9 22	1	510002000
36	CHAVETTA 8 X 25	1	510002000
37	GRANNO M10 X 12	1	510002000
38	BRETTI 6 X 8 X 16	1	510011000
39	COGNIA DI PROTEZIONE	1	510011000
40	NONDELLA P15 X 20	1	500001100
41	DADO BASSO 310	1	500001100
42	COPRITA PROTEZIONE GIUNTO	1	021200000
43	TAMPO 50 X 30	1	020110000
44	VITE M6 X 10	2	510004010
45	NONDELLA 9 12	1	511110010
46			
47			
48			
49			
50			



PRECAUTIONS AND INSTRUCTIONS FOR USE OF THE POWER SWEEPER



THIS WARNING DECAL REPRODUCED BELOW IS SHOWN IN POSITION ON THE SWEEPER COVER

TRAINING

This Power Sweeper owner's manual is a supplement to your 600-700 Series unit owner's manual. READ BOTH MANUALS before attaching and operating the Power Sweeper. power units and attachments are designed for operation by properly instructed adults only. Make sure any person operating this equipment has read these manuals.

DO NOT LET CHILDREN OPERATE THE UNIT.

KEEP THE OPERATING AREA CLEAR OF PEOPLE AND ANIMALS. BE CAREFUL THAT CHILDREN DO NOT COME NEAR.

Do not put hands, feet or any other part of your body near any rotating part.

During storage, or whenever unit is unattended, make the unit unstartable by disconnecting the spark plug wire from the spark plug.

! WARNING



Read the Operator's Manual & Safety Guide. Obtain replacement manual from your dealer or contact P.O. Box 1739, Matthews, N.C. 28105

- Know location and functions of all controls.
- Keep all safety devices and shields in place & operating.
- Never allow children or uninstructed adults to operate.
- Stop engine before unclogging or making repairs.
- Keep bystanders and pets away from machine.
- Keep away from rotating parts.
- Removal of one attachment may create a hazard associated with another, if directions are not followed.
- Deactivate PTO lockout for front operating attachments. See illustration.



PREPARATION

Wear safety protection articles and clothing suitable for the climate and the work:

1. Wear eye protection goggles stamped "Z87" (for ANSI Standard Z87). In bright sunlight, wear sunglasses under the goggles.
2. Wear hearing protection.
3. Wear a dust mask.
4. Protect sensitive skin areas from the sun with clothing or a sun block.

Obey all instructions for the safe handling and storage of gasoline fuel. (See your unit owner's manual.)

Before and during transport of the unit, the casters of the Sweeper should be adjusted so the bristles do not touch the ground.

If you have a 700 series unit, deactivate the PTO

reverse lockout for operation with this front drive Sweeper. A drawing of the lockout is on the Sweeper decal. See your unit owner's manual for instructions.

Before starting the engine, put all control levers in the neutral "N" position. All "N" positions are neutral. Always be sure the PTO (power take-off) to the Power Sweeper is disengaged.

OPERATION

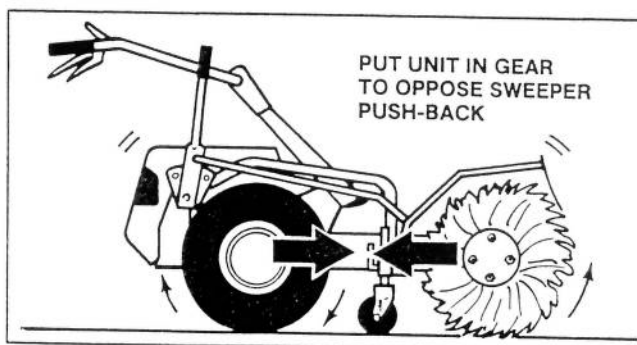
Carefully inspect the area to be power-brushed for objects which could be thrown by the Sweeper or cause it to run off course. Remove wires, glass objects, doormats, boards, toys and other obstructions.

Move the unit to the work area and shut off the engine. Adjust casters for proper brush height: brush should touch flat, paved surfaces; should barely clear the turf when removing lawn thatch. If brush is adjusted too low, or the Sweeper is driven into sudden ground rises, the brush will drive the unit back towards the operator.

Always put the unit in gear before engaging the PTO. If the unit is in neutral and the Sweeper is engaged and in ground contact, it will drive back the unit.

When the surface is irregular or contains hillocks, prepare to let go of the controls to stop all motion if the unit is driven backwards.

Use extreme caution when operating the Sweeper on paved or gravelly areas. Be careful that the discharge is not directed at people or passing vehicles.



Do not use the Sweeper on any terrain where you cannot keep your footing, or the unit could overturn or slide into you. Walk behind the unit on slopes. Disengage PTO when going up or down a slope. Work across the slope when sweeping.

If rooftops are to be swept, be sure the surface is dry and does not pitch more than 5 degrees (1/2" per foot). Set up barriers that will warn you when you come near the edges.

Select the slowest gear and throttle speeds when backing the unit.

MAINTENANCE AND STORAGE

DISCONNECT THE SPARK PLUG WIRE FROM THE SPARK PLUG TO ENSURE THAT ENGINE CANNOT BE STARTED DURING ANY OF THESE THINGS:

1. During repair or adjustment of the unit or Sweeper.
2. When unit is to be stored, transported, shipped, or left unattended.
3. If the machine suddenly starts to vibrate or run erratically. If unit and Sweeper are not running smoothly, they should be inspected by an authorized servicing dealer or distributor before further use.

All safety shields, plates, lockouts, deflectors must be in proper position. Safety warning decals on both Sweeper and unit should be replaced if worn out or

defaced. Do not operate if any safety devices or parts are missing or broken.

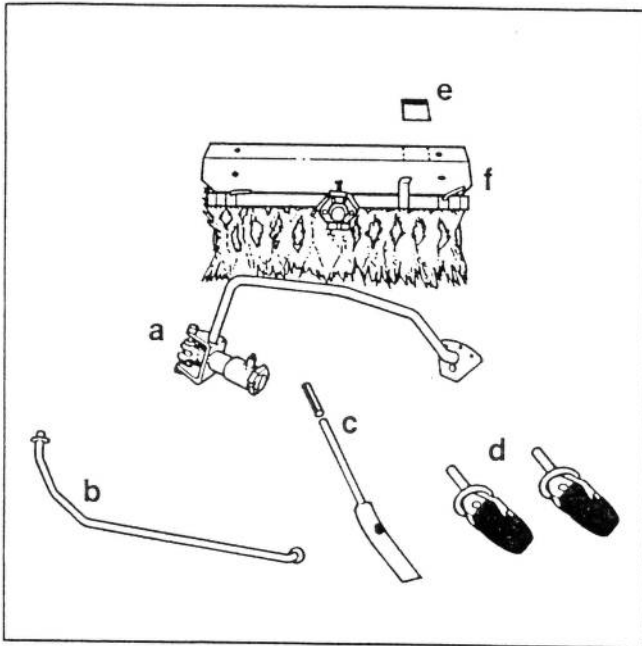
Keep engine, unit and Sweeper in good working condition. Clean the Sweeper at regular intervals, and check each time for missing parts. Tighten loose fasteners.

Clean the air filter often. Under very dusty conditions, install a commercial air filter, or a precleaner over a "dry" type filter, and clean several times daily.

Perform the maintenance given in the unit and Power Sweeper owner's manuals, but do not make repairs for which instructions are not given in the manuals. Certain engine adjustments and internal servicing of engine, unit transmission and Sweeper should be done only by trained servicemen at an authorized servicing dealer or distributor.

UNCRATING AND ASSEMBLING

1. Wear eye protection and gloves when breaking the steel bands and removing staples from the carton.



2. Open the carton, then slit the corners and lay down the sides. Remove these pieces (see drawing):
 - a) U-joint assembly (includes a "qwik hitch" to the unit PTO, and a Sweeper angle adjustment plate).
 - b) Long angle control bar with "qwik pins" and flat washers at the end holes.
 - c) Angle adjustment lever and rubber grip.
 - d) Two caster wheels (for brush height adjustment).
 - e) Power Sweeper instruction decal.
 - f) Sweeper (main assembly).

NOTE

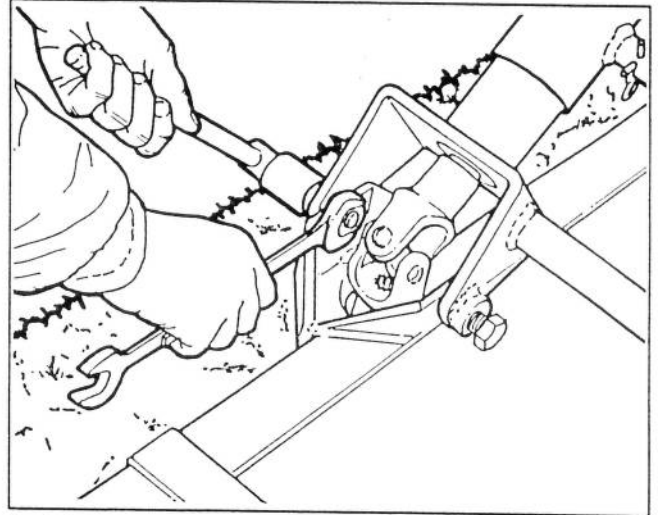
Some parts have the fasteners placed in them. These are to be removed and installed per instructions as you proceed with assembly.

3. Lay the Sweeper down with its PTO shaft connection pointing straight up. Remove the nuts and bolts from the bracket at the connector. Grease the PTO shaft and the inside of the connector freely with clean bearing grease.

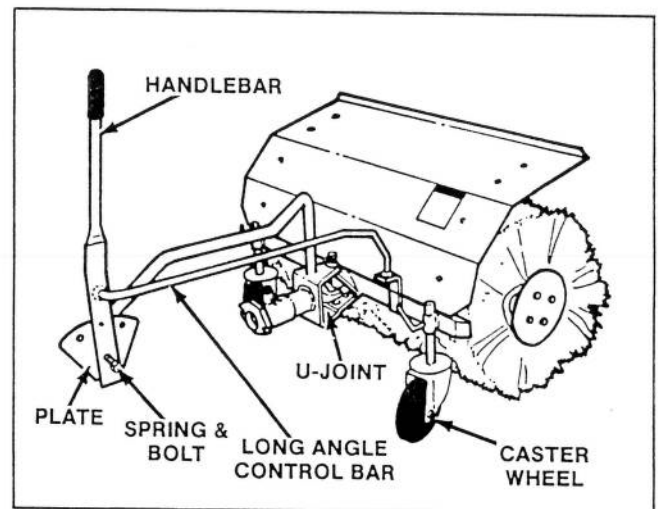
NOTE

Keep a rubber mallet on hand for use in step 4, because the fit may be very tight.

4. Fit the PTO connector in the U-joint to the Sweeper shaft connector. Tap the mounting brackets together to align the bolt holes. Install the two M16 x 40 bolts in the holes, and put a lock nut on each bolt. Make these fasteners snug but not tight, because the U-joint must be able to pivot (for Sweeper angle adjustment).

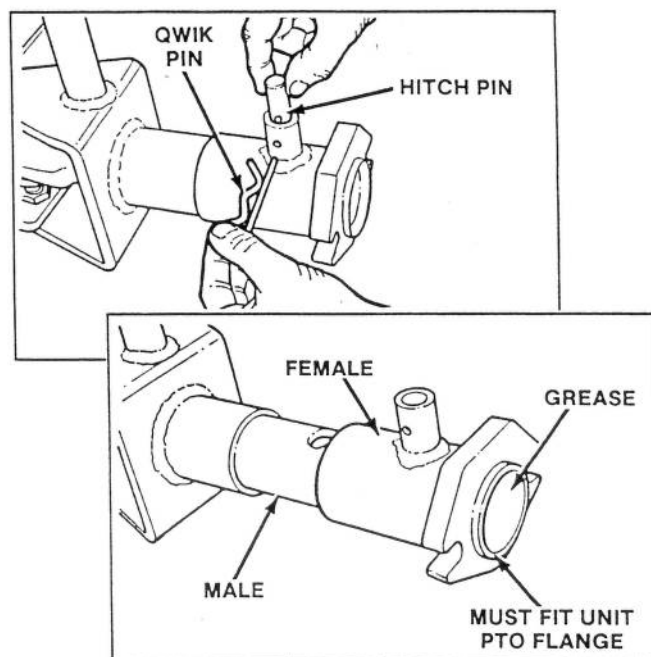


5. Fit the caster wheels into the mounting brackets on the Sweeper. Lock them in place by tightening the set screws. (Height adjustment will be made later.)



6. Remove the tension spring and bolt from the Sweeper angle adjusting plate (on U-joint assembly). Push the stud of the angle adjusting lever into the one of the three top holes in the plate. Put the spring onto the bolt, and install the bolt through the lever into the bottom hole of the plate. Put the rubber grip on the lever.

7. Remove the "qwik pins" and flat washers from both ends of the angle control rod. Mount one end to the Sweeper cover bracket, and the other end to the angle adjusting lever.
8. Pull the "qwik pin" and hitch pin from the "qwik hitch" on the U-joint shaft. Slide the hitch off the shaft. Grease the shaft and all inner surfaces of the hitch. Connect the female end of the hitch to the unit PTO flange (make sure of proper fit). Slide the hitch back onto the male U-joint shaft. Line up the holes in the hitch, and secure with the hitch pin and "qwik pin."
9. Tear the backing from the instruction decal and fix the decal to the brush cover as shown in the drawing on page 4.



POWER SWEEPING

The Sweeper can be used to sweep walks and drives of debris or newly fallen snow. It can also be used to pull thatch out of lawns. The working height (ground clearance) is dictated by the work application and the surface to be swept. The angle can be adjusted to sweep left, straight ahead, or to the right.

⚠ WARNING

The Sweeper will push the unit backward if set too low (less than zero clearance) especially when operating while the unit drive is in neutral gear. Striking an obstruction or running into a sudden incline can also cause the Sweeper to back up the unit. This can result in loss of operator control. Inspect the area for obstructions before sweeping. Do not use the Sweeper on extremely uneven surfaces.

1. SETTING BRUSH HEIGHT: Loosen the caster wheel set screws. Set required height and tighten the screws. The bristles should be allowed to contact smoothly paved surfaces, but should be raised for clearance of bumpy or irregular terrain.
2. SETTING THE ANGLE: Use whatever angle gives the best results. Set the angle adjusting handle in the forward hole to sweep left, the rear hole to sweep right, and the one between to sweep straight ahead.

⚠ WARNING

Do not sweep on steep grades or slippery slopes or wherever else you may not be able to keep control.

3. SELECTING GEAR AND SWEEPER SPEEDS: The throttle speed through the PTO determines the Sweeper rpm. How fast the unit moves is according to both the throttle setting and chosen gear. Try these settings:
 - a) Medium throttle and gear for sweeping walks and driveways.
 - b) Lowest possible forward speed and Sweeper rpm for removing thatch without tearing up the lawn.
 - c) High gear and lots of throttle for pushing snow, especially wet snow.
4. SEQUENCE FOR START-UP: Always be sure the unit is out of gear (in "N" neutral position) and the PTO is disengaged before you crank the engine. After the engine starts, put the unit into gear before engaging the PTO. This sequence is necessary because the forward thrust of the unit will help counteract any backward force exerted by the Sweeper.

⚠ DANGER

The weight of the unit plus the Sweeper is 275 lbs. Do not drive the unit onto skating ponds or lakes unless the ice is thick and strong enough to amply support the equipment and the operator.